



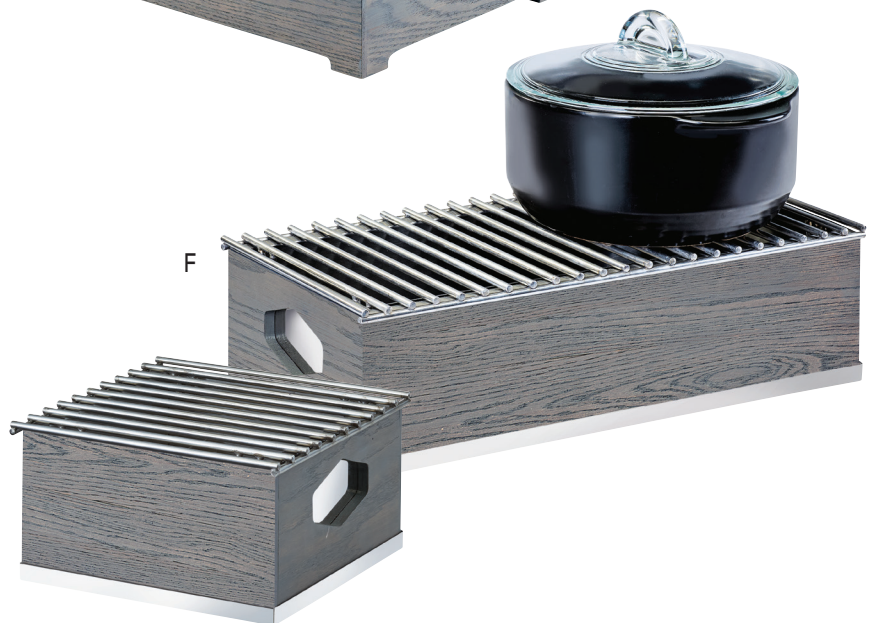
**C. ASHWOOD ICE HOUSINGS**  
Includes Clear Polycarbonate Pan.  
ITEM 3800-6-83 | 7½Wx7½Dx7H  
ITEM 3800-10-83 | 13¼Wx11Dx7¼H  
ITEM 3800-12-83 | 21¼Wx13¼Dx7H



**D. ASHWOOD BUTANE STOVE FRAME**  
Optional Butane Stove Sold Separately.  
ITEM 3816-83 | 12Wx14Dx7½H  
ITEM 4010-I | Optional Butane Stove



**E. ASHWOOD INDUCTION UNIT**  
Includes Induction Burner.  
ITEM 3633-83 | 12¾Wx16Dx7¼H



**F. ASHWOOD CHAFER ALTERNATIVES**  
ITEM 3814-83 | 10¼Wx10Dx5½H  
ITEM 3813-83 | 19¾Wx10Dx5½H

Please visit [www.calmil.com/legal](http://www.calmil.com/legal) for a complete list of California Proposition 65 related items.