



# HYPERSTEAM PRESSURELESS STEAMER

## MODEL HY-5G

Steamer shall be a Groen Model HY-5G stainless steel pressureless steamer with a self-contained atmospheric 62,000 BTU/hr gas steam generator.

PROJECT NAME:

LOCATION:

ITEM NO:

QTY:

MODEL NO:

AIA NO:

SIS NO:

**CONSTRUCTION:** Steamer cavity and cabinet shall be all stainless steel construction with removable right and left-side panels, providing access to internal components. Steamer door is all stainless steel, with strong continuous hinge and is field-reversible for left or right-swing. Door shall be insulated and provided with a one-piece, replaceable seal. Easy-open handle and latch shall provide positive lock and seal when door is pushed or slammed shut. Hidden magnetic door switch cuts power to blower and cuts power to generator when the door is opened. Pan support racks shall be polished stainless steel and removable for easy cleaning. A stainless steel condensate collection tray is positioned under cavity door.

**FINISH:** Cabinet exterior, including door, shall be finished to a #3 uniform finish. Cavity interiors are polished stainless steel. Control panel face plates shall be smudge-resistant polyester film, ensuring maximum ease in cleaning and maintaining an attractive appearance.

**CSA DESIGN CERTIFICATION:** Steamer shall be CSA (formerly AGA) design-certified to ANSI Z83.11.

**SANITATION:** Unit shall be designed and manufactured to meet NSF codes and be NSF-listed. Unit shall allow operator to delime steam generator through control panel mounted delimiting port, without tools or service call. Push-button auto-clean feature is standard.

**CONTROLS:** Steamer controls shall include an ON-OFF power button; 60 minute electro-mechanical timer, with continuous steam setting; and READY light which indicates when cavity is warm and ready for steaming. Auto-clean button initiates delimiting cycle.

**PERFORMANCE FEATURES:** Steamer cavity shall have a powerful side-mounted blower, which increases steam velocity and provides efficient steam distribution throughout cavity and between loaded pans. Steam generator delivers 12,400 BTU/hr power input per 2 1/2" deep steam pan. Heat-up time to READY shall be 8-10 minutes or less, under normal conditions. Cavity

is kept warm and ready for instant steam between loads. No cavity warm up required, after READY light comes on. DELIME indicator light warns operator of need to delime steam generator. Unit will shut off if water level is low. When power is turned "off," unit automatically blows down the steam generator, to reduce sediment build-up.

### ATMOSPHERIC STEAM GENERATOR:

Unit shall have a gas-heated, rear-mounted steam generator to provide atmospheric steam to the chamber at a temperature of approximately 212° F. The high-efficiency steam generator has an electric water sensor and a 62,000 BTU/hr firing rate. Standing pilot with easy light electronic ignition standard.

### PAN CAPACITY:

Pan Size/Type	Number
12 x 20 x 1"	10
12 x 20 x 2 1/2"	5
12 x 20 x 4"	3

**INSTALLATION:** Unit requires gas service (specify natural or propane) via 1/2" NPT gas supply line or approved equivalent. Unit requires two 3/4" NH cold water supply lines: one for treated water and one for untreated water. A single 3/4" NH cold water supply line may be used, but requires the optional adapter listed below. Unit requires a 2" O.D. free venting drain and 115 Volt single-phase electric service.

### WATER SUPPLY REQUIREMENTS:

All steam systems are subject to contamination and failure due to mineral content found in all water supplies. To minimize service problems, a Groen PureSteam™ Water Treatment System is recommended.

**ORIGIN OF MANUFACTURE:** Designed and manufactured in the United States.

5-Pan capacity stainless steel pressureless steamer, table top, self-contained, gas-heated. (model HY-5G shown)



### OPTIONS/ACCESSORIES:

- Groen PureSteam™ Water Treatment System
- Factory stacking kit
- Stainless steel support stand
- Pan racks for support stand
- 4" adjustable legs
- Single water connection (cold water)

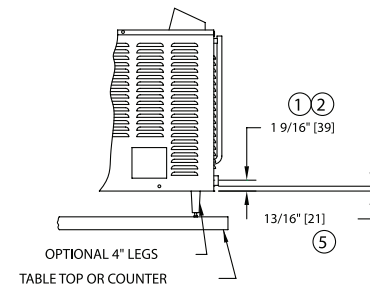
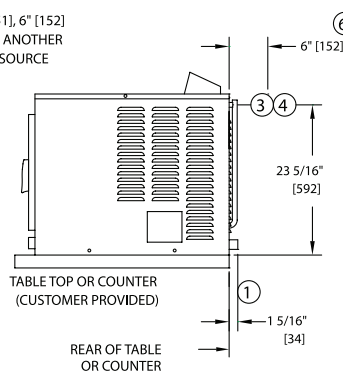
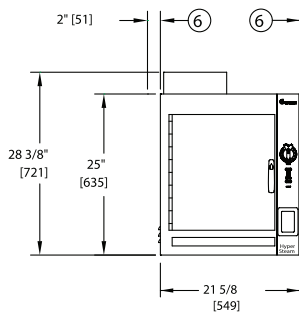
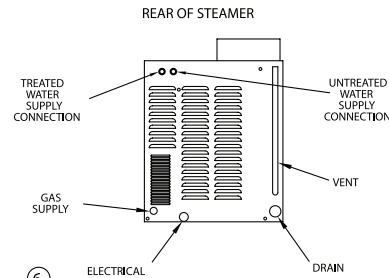
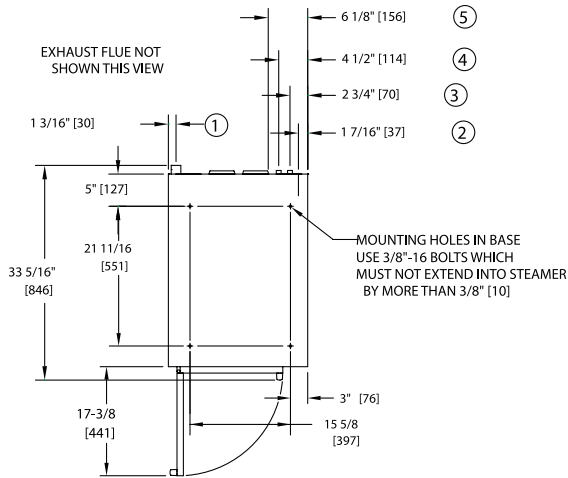


**SERVICE CONNECTIONS & NOTES:**

1. DRAIN CONNECTION: 2" [51] TUBE (DRAIN FREE VENTING).
2. GAS CONNECTION: 1/2" NPT MINIMUM
3. TREATED WATER SUPPLY AT 30 TO 60 PSIG WITH A FLOW RATE OF 0.75-1.50 GPM AND WITH A 3/4" NH CONNECTION.
4. UNTREATED WATER SUPPLY AT 30 TO 60 PSIG WITH A FLOW RATE OF 0.75-1.50 GPM AND WITH A 3/4" NH CONNECTION.

- P/N 138478 REV C
5. ELECTRICAL CONNECTION 7/8" DIA. HOLE (REF. 1/2 CONDUIT KNOCKOUT) 120V 2.5 AMPS, OR 230V @ 2 AMPS, 50/60 HZ
  6. MINIMUM REAR AND SIDE CLEARANCES:  
 RIGHT SIDE = 2" [51] OR 6" FROM HEAT SOURCE, LEFT SIDE = 2" [51]  
 REAR = 6" [152]
- DIMENSIONS IN BRACKETS [ ] ARE MM.

	NATURAL GAS	PROPANE GAS
GAS OPERATING PRESSURE	3.2" W.C.	10.5" W.C.
MAX. INPUT-BTU/HR	62,000	62,000
RECOMMENDED INCOMING GAS FEED RATE	5" W.C. MIN	12" W.C. MIN
	14" W.C. MAX	14" W.C. MAX



**OPTIONAL SUPPORT STAND**

