

# WARM BEVERAGE

## COBALT



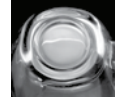
**Mug No. 5201**  
10 oz./29.6 cl./296 ml.  
H3½ T3½ B2¾ D4½  
1 doz./10# • .44 cu. ft.  
SCC 708673



**Mug No. 5213**  
13 oz./38.5 cl./385 ml.  
H3¾ T3¾ B3¾ D4¾  
1 doz./13# • .52 cu. ft.  
SCC 886531



**Mug No. 5213B**  
13 oz./38.5 cl./385 ml.  
H3¾ T3¾ B3¾ D4¾  
1 doz./13# • .52 cu. ft.  
SCC 310869



GLASS BASE



**All Purpose Mug No. 5724**  
10 oz./29.6 cl./296 ml.  
H4½ T2½ B2¾ D4½  
3 doz./30# • 1.37 cu. ft.  
SCC 373540



**All Purpose Optic Mug No. 5725**  
10 oz./29.6 cl./296 ml.  
H4½ T2½ B2¾ D4¾  
3 doz./30# • 1.37 cu. ft.  
SCC 373557



**All Purpose Mug No. 5544**  
13½ oz./39.9 cl./399 ml.  
H4½ T3½ B2¾ D5  
1 doz./11# • .64 cu. ft.  
SCC 269673



**Square Mug No. 5352**  
14 oz./41.4 cl./414 ml.  
H4 T3½ B2½ D4¾  
1 doz./10# • .68 cu. ft.  
SCC 394583



**Irish Coffee No. 5295**  
8½ oz./25.1 cl./251 ml.  
H5½ T3½ B2¾ D4½  
2 doz./21# • 1.13 cu. ft.  
SCC 030101



**Irish Coffee with optic No. 5294**  
8¼ oz./24.4 cl./244 ml.  
H5½ T3½ B2¾ D4½  
2 doz./22# • 1.13 cu. ft.  
SCC 057986



**Irish Coffee No. 5304**  
10½ oz./31.1 cl./311 ml.  
H5 T3½ B2¾ D4¼  
1 doz./12# • .49 cu. ft.  
SCC 840298



**Georgian Irish Coffee No. 8054**  
6 oz./17.7 cl./177 ml.  
H5¼ T2½ B2¾ D2½  
3 doz./15# • 1.25 cu. ft.  
SCC 435095



**All Purpose Mug No. 5589**  
9 oz./26.6 cl./266 ml.  
H4½ T3½ B2½ D4¼  
2 doz./21# • 1.01 cu. ft.  
SCC 308160



**Irish Coffee No. 5293**  
8½ oz./25.1 cl./251 ml.  
H5½ T3 B2½ D3¾  
2 doz./21# • 1.04 cu. ft.  
SCC 878154



**Irish Coffee No. 5292**  
8 oz./23.7 cl./237 ml.  
H6½ T2½ B2¾ D3¾  
2 doz./25# • 1.06 cu. ft.  
SCC 878161



**Cafe Mug No. 5286**  
14 oz./41.4 cl./414 ml.  
H6¾ T3½ B2½ D5  
1 doz./17# • .86 cu. ft.  
SCC 592061

## tabletop TIP

Thermal shock, taking a cold glass and pouring a hot beverage into it, can damage glassware. It is recommended to pre-heat the glassware before adding a steaming hot beverage.