

# WARM BEVERAGE



**Mug  
No. 5201**  
10 oz./29.6 cl./296 ml.  
H3½ T3½ B2¼ D4½  
1 doz./10# = .44 cu.ft.  
SCC 708673



**Mug  
No. 5213**  
13 oz./38.5 cl./385 ml.  
H3¼ T3¾ B3¾ D4¾  
1 doz./13# = .52 cu.ft.  
SCC 886531



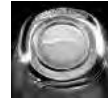
**Mug  
No. 5213B**  
13 oz./38.5 cl./385 ml.  
H3¾ T3¾ B3¾ D4¾  
1 doz./13# = .52 cu.ft.  
SCC 310869



**All Purpose Mug  
No. 5724**  
10 oz./29.6 cl./296 ml.  
H4½ T2½ B2¾ D4¾  
3 doz./30# = 1.37 cu.ft.  
SCC 373540



**All Purpose Optic Mug  
No. 5725**  
10 oz./29.6 cl./296 ml.  
H4½ T2½ B2¾ D4¾  
3 doz./30# = 1.37 cu.ft.  
SCC 373557



GLASS BASE



GLASS RIM



**All Purpose Mug  
No. 5544**  
13½ oz./39.9 cl./399 ml.  
H4½ T3¾ B2¾ D5  
1 doz./11# = .64 cu.ft.  
SCC 269673



**Square Mug  
No. 5352**  
14 oz./41.4 cl./414 ml.  
H4 T3¾ B2½ D4¾  
1 doz./10# = .68 cu.ft.  
SCC 394583



**Tall Square Mug  
No. 5380**  
16 oz./47.3 cl./473 ml.  
H5 T3½ B2¾ D4¾  
1 doz./14# = .75 cu.ft.  
SCC 423518



**Georgian Irish Coffee  
No. 8054** ●  
6 oz./17.7 cl./177 ml.  
H5¾ T2¾ B2¾ D2¾  
3 doz./15# = 1.25 cu.ft.  
SCC 435095



**Irish Coffee  
No. 5295**  
8½ oz./25.1 cl./251 ml.  
H5½ T3½ B2¾ D4½  
2 doz./21# = 1.13 cu.ft.  
SCC 030101



**Irish Coffee with optic  
No. 5294**  
8¼ oz./24.4 cl./244 ml.  
H5½ T3½ B2¾ D4½  
2 doz./22# = 1.13 cu.ft.  
SCC 057986



**Irish Coffee  
No. 5304**  
10½ oz./31.1 cl./311 ml.  
H5 T3¼ B2¾ D4¼  
1 doz./12# = .49 cu.ft.  
SCC 840298