

"JDTS" PRO-BOWL DISHTABLES

Soiled, Straight Dishtable w/Stainless Steel Top & Stainless Steel Base

FEATURES:

- Standard 16GA Type 300 Stainless Steel With #4 Polish, Satin Finish
- Full Length 10" High Boxed Backsplash, With 2" Return To Wall At 45 Degree And 1/2" Turned Down Rear Lip
- 1" Faucet Holes In Backsplash
- All Outside Corners Of Assembly Are Bull-Nosed To Provide Safe, Clean, And Polished Edge
- Standard 1-5/8" Diameter Stainless Steel Legs

SPECIFICATIONS:

- Top: Stainless Steel Tops Are TIG Welded, Exposed Welds Are Polished To Match Adjacent Surface.
- Top & Bowls: 16GA Stainless Steel Type 300 Stainless Steel With #4 Polish, Satin Finish
- Legs: 1-5/8" Round O.D. 16GA Stainless Steel
- Bracing: 1-1/4" Round O.D. 16GA Stainless Steel
- Type 300 Stainless Steel With #4 Polish, Satin Finish
- Gussets: Stainless Steel
- Feet: 1" Adjustable Stainless Steel Bullet Feet

CERTIFICATIONS:



ACCESSORIES

DESCRIPTION

- Add-A-Faucet
- Pre-Rinse Units
- Level Waste
- Over-Shelf
- Under Shelf
- Pot Rack

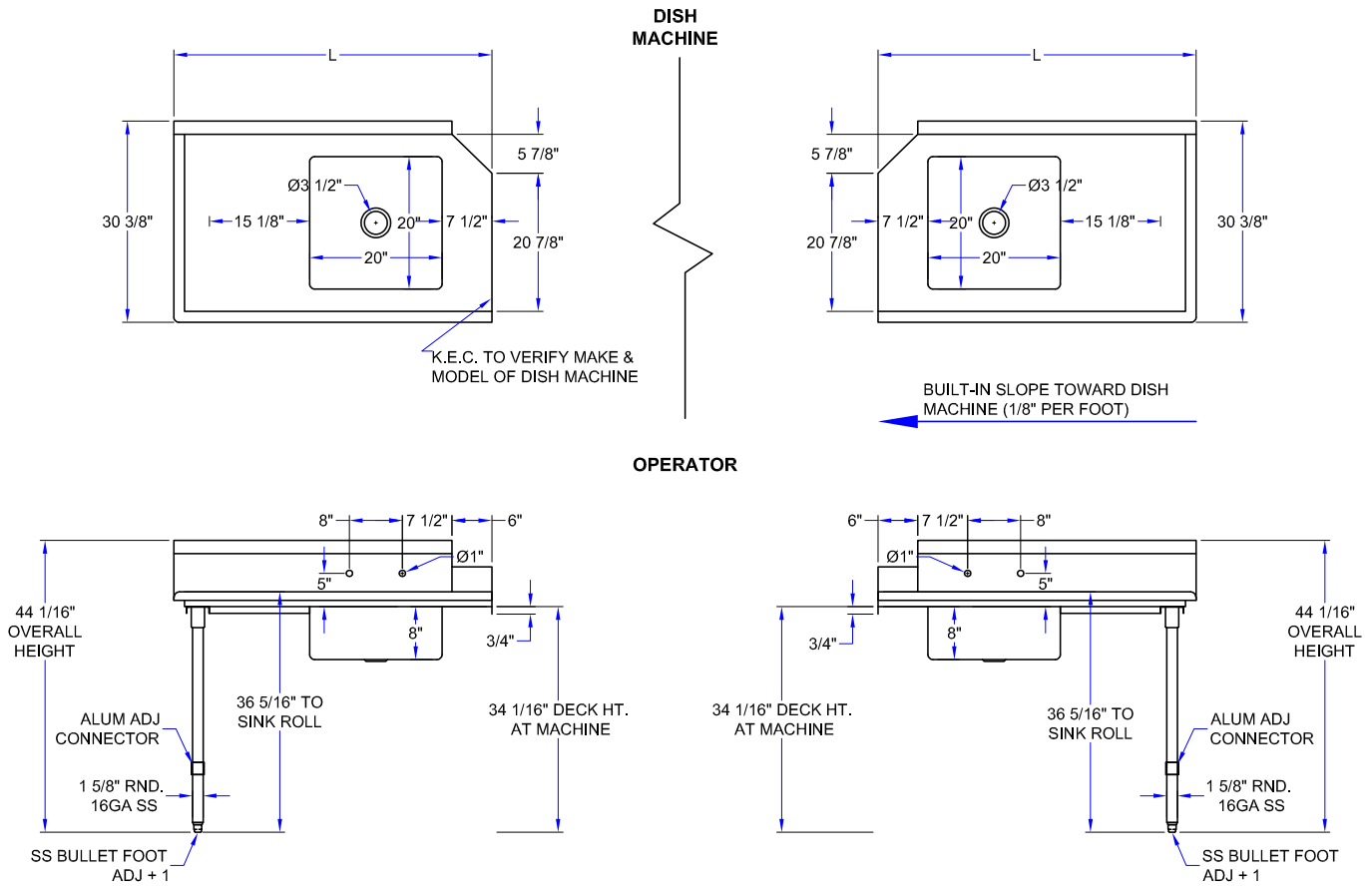
"JDTS" PRO-BOWL DISHTABLES

MODEL	SIZE (LXWXH)	LENGTH (L)	WEIGHT (LBS)
JDTS-20-36L	36"x30-3/8"x44-1/16"	36"	45
JDTS-20-48L	48"x30-3/8"x44-1/16"	48"	60
JDTS-20-60L	60"x30-3/8"x44-1/16"	60"	70
JDTS-20-72L	72"x30-3/8"x44-1/16"	72"	85

MUST SPECIFY LEFT (L) OR RIGHT (R) SUFFIX FOR LOCATION OF DISH MACHINE OPENING
*** UNITS 7 FT. OR LARGER ARE FURNISHED WITH 6 LEGS**

ALL DIMENSIONS ARE TYPICAL. TOLERANCE +/- .500". JOHN BOOS & CO. RESERVES THE RIGHT TO CHANGE SPECIFICATIONS WITHOUT NOTICE.

DETAILED SPECIFICATIONS



"JDTS" PRO-BOWL DISHTABLES

MODEL	SIZE (LXWXH)	LENGTH (L)	WEIGHT (LBS)
JDTS-20-36L/R	36"x30-3/8"x44-1/16"	36"	45
JDTS-20-48L/R	48"x30-3/8"x44-1/16"	48"	60
JDTS-20-60L/R	60"x30-3/8"x44-1/16"	60"	70
JDTS-20-72L/R	72"x30-3/8"x44-1/16"	72"	85

MUST SPECIFY LEFT (L) OR RIGHT (R) SUFFIX FOR LOCATION OF DISH MACHINE OPENING
*** UNITS 7 FT. OR LARGER ARE FURNISHED WITH 6 LEGS**

ALL DIMENSIONS ARE TYPICAL. TOLERANCE +/- .500". JOHN BOOS & CO. RESERVES THE RIGHT TO CHANGE SPECIFICATIONS WITHOUT NOTICE.