



# "JNS" Maple Top Work Tables

w/ 1 1/2" thick Hard Rock Maple Top  
w/ Galvanized Base and Undershef



**AUTOQUOTES**



1-1/2" MAPLE TOP w/ UNDERSHELF					
24"WIDE	Qty	30"WIDE	Qty	36"WIDE	Qty
JNS01		JNS08		JNS15	
JNS02		JNS09		JNS16	
JNS03		JNS10		JNS17	
JNS04		JNS11		JNS18	
JNS05		JNS12		JNS19	
JNS06		JNS13		JNS20	
JNSA		JNS13A		JNS20A	
JNS07		JNS14		JNS21	

**FEATURES:**

- \* 1 1/2" Thick Hard Rock Maple Top  
top style "SCT" flat top
- \* Maple top is finished with penetrating oil  
with optional natural clear Varnique Finish
- \* Galvanized base and undershef,
- \* Undershef is secured in a fixed position, 12" above floor
- \* Adjustable bullet feet
- \* Shipped knocked-down, easy - to - assemble
- \* Optional drawers, casters, pot racks, etc. available
- \* All models are approved by the National Sanitation Foundation

**OPTIONAL ACCESSORIES**

**MATERIAL:**

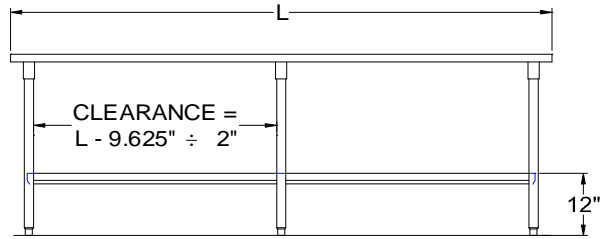
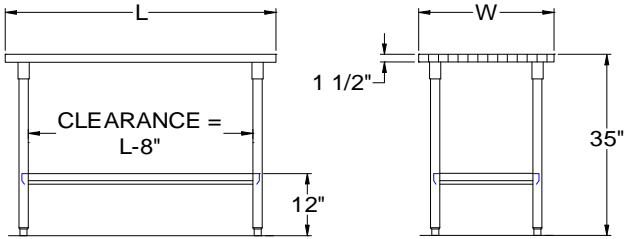
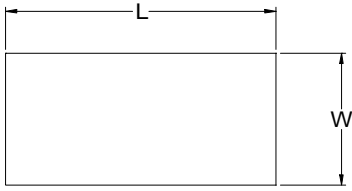
- Top: Laminated Hard Rock Maple
- Shelf: 18 gauge Galvanized Steel
- \*\* 6 ft. table only, 16 gauge galvanized steel
- Legs: 16 gauge Galvanized Steel
- Gussets: Galvanized Steel
- Feet: 1" adjustable galvanized bullet feet

	MODEL #	Qty
DRAWER		
DRAWER LOCK		
ADJUSTABLE SHELF		
CASTERS		
OVERSHELVES		
POT RACK		

**John Boos & Co**

3601 S. Banker Street - Effingham, IL 62401  
Phone: 217-347-7701 - Fax: 217-347-7705  
Email: sales@johnboos.com - Web-site: www. johnboos.com

# DETAILED SPECIFICATIONS



All units ship unassembled for reduced shipping cost.  
 Units 7 ft. and larger are furnished with six legs.  
 All dimensions are typical.  
 Tolerance +/- .500".

Finished size of undershelf.  
 Shelf length = length minus 4.875"  
 Shelf width = width minus 4.25"

## 1-1/2" MAPLE TOP & UNDERSHELF

L	24" WIDE	WT.	30" WIDE	WT.	36" WIDE	WT.
36	JNS01	72	JNS08	86	JNS15	100
48	JNS02	90	JNS09	109	JNS16	127
60	JNS03	109	JNS10	132	JNS17	155
72	JNS04	133	JNS11	161	JNS18	190
84	JNS05	146	JNS12	178	JNS19	214
96	JNS06	164	JNS13	201	JNS20	239
108	JNS06A	187	JNS13A	229	JNS20A	271
120	JNS07	209	JNS14	256	JNS21	303

### John Boos & Co

3601 S. Banker Str - Effingham, IL 62401 Phone: 217-347-7701 - Fax: 217-347-7705  
 Email: sales@johnboos.com - Web-site: www.johnboos.com



July 2013

John Boos is constantly engaged in a program of improving products and therefore reserves the right to change specification without prior notice