

Shelving Unit Accessories [For Posts or Shelves]

S Hooks



93333 93333GN 93333BK

Use to eliminate 2 posts per adjacent unit. Two hooks required per shelf. Chromate, green, or black epoxy coated. Packed 2 per package.

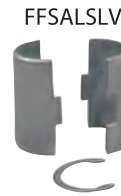
U Clamps



FPSSH

Use to eliminate 2 posts per adjacent unit. Two hooks required pershelf. Heavy guage stainless steel to connect 2 FPS-Plus polymer shelf panels and truss side-by-side. Packed 2 per package.

Split Sleeves



FFSALS LV

Black plastic, one bag required per shelf. Packed 4 sets per package. 30058

Aluminum split sleeves for high temperature, demanding, or conductive applications. Zinc retainer rings. 4 sets per bag. 1 set required per shelf. *Requires 2" retaining [snap] pliers to install (not included).*

Triangular Feet



FTSFZ

When additional stability is needed or to bolt units to the floor. Zinc plated. Packed 4 per package.

Leveling Assembly



FLEVASM

Zinc die-cast post insert and zinc plated threaded bolt with gray polymer cover to protect floors. Packed 4 assemblies per package.

Gray plastic replacement covers [FPFC] are packed 4 per package.

Caps for shelves or posts



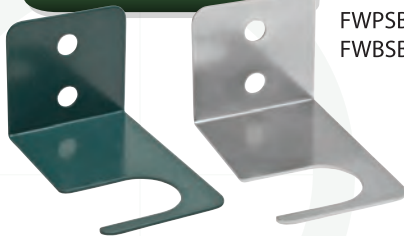
FCSC

Chromate caps to fill shelf corner openings. Packed 4 per package.

Plastic post caps to fill top of 1" (2.5 cm) posts. Packed 4 per package.

FPLASCAP

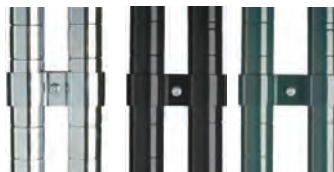
Universal Brackets



FWPSBGN
FWBSBCH

Brackets provide the opportunity to secure a unit to the wall for greater safety and security. Spacing is 2" (5.1 cm) off wall. Chromate or green epoxy finish.

Post Clamps



Secure shelving units together for maximum strength. It is recommended to use clamps at the front and back of the unit. Chromate, black or green epoxy coated.

FPOCL
FPOCLBK
FPSPC

Extended Handles



FXHAND18C
FXHAND24C

Chromate Finish For use with 18" (45.7 cm) or 24" 61.0 cm wide shelves, Adds more maneuverability and control to mobile units. Includes 2 sets of plastic sleeves.

| Item # | Description | Case |
|-----------|---|------|
| 93333 | S-Hook/shelf connectors - chromate finish, 2 per pkg | 50 |
| 93333BK | S-Hook/shelf connectors - black epoxy coated, 2 per pkg | 50 |
| 93333GN | S-Hook/shelf connectors - green epoxy coated, 2 per pkg | 50 |
| FPSSH | U-Hook/shelf connectors - green epoxy coated, 2 per pkg | 96 |
| 30058 | Replacement sleeves, 4 sets per pkg | 12 |
| FFSALS LV | Tapered aluminum split sleeves, 4 pair per pkg | 150 |
| FPFC | Plastic caps for post leveling feet, 4 per pkg | 50 |
| FLEVASM | Zinc plated leveling assemblies, 4 per pkg | 20 |
| FTSFZ | Triangular security feet, zinc, 4 per pkg | 25 |

| Item # | Description | Case |
|-----------|---|------|
| FCSC | Chromate shelf caps, 4 per pkg | 250 |
| FPLASCAP | Plastic post caps, 4 per pkg | 50 |
| FWPSBCH | Security bracket, chromate, 2 per pkg | 24 |
| FWPSBGN | Security bracket, green epoxy, 2 / pkg | 24 |
| FPOCL | Post clamps, chromate finish, 4 per pkg | 25 |
| FPOCLBK | Post clamps, black epoxy, 4 per pkg | 25 |
| FPSPC | Post clamps, green epoxy, 4 per pkg | 25 |
| FXHAND18C | 18" (45.7 cm) extended handle | 8 |
| FXHAND24C | 24" (61.0 cm) extended handle | 8 |