



"Your Solutions Partner"

Specifications

F.O.B Sedalia, Missouri 65301



TS530-xx



TS530-xx-1SN



TS540-xx



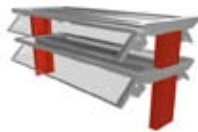
TS550-xx



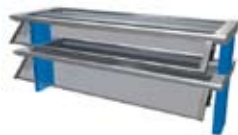
TS560-xx



TS570-xx



TS580-xx



TS530-xx-1SN

OPTIONS:

- Fluorescent light
- Radiant heat rod w/incandescent light - 120v (steel shelf only)
- Radiant heat rod w/switch (steel shelf only)
- Special lengths or heights
- Special finish colors
- Acrylic end enclosures

AGENCY LISTINGS:



DUKE MANUFACTURING CO.
2305 N. Broadway
St. Louis, MO 63102

800.735.3853 Toll Free
314.231-1130 In Missouri
314.231.5074 Fax
www.dukemfg.com

Approval Stamp(s):

PRODUCT INFORMATION:

PROJECT: _____

ITEM: _____

QUANTITY: _____

MODEL:

Thurmaduke Serving Systems - Designer Food Shields

- **TS530-xx** Buffet Style - 2-sided
- **TS530-xx-1SN** Buffet Style - 1-sided
- **TS540-xx** Self-Service Style, stainless steel top
- **TS550-xx** Self-Service Style, glass top
- **TS560-xx** Service Style, stainless steel top
- **TS570-xx** Service Style, glass top
- **TS580-xx** Self-Service Style - 2-sided
- **TS580-xx-1SN** Self-Service Style - 1-sided

TOPS:

- All edges flanged down
- 18 gauge stainless steel or paint grip steel
- Choice of (12) powder coat paint colors (must choose one):

<input type="checkbox"/> #217105 - Designer White	<input type="checkbox"/> #217103 - Natural Almond
<input type="checkbox"/> #217150 - Orange Red	<input type="checkbox"/> #217154 - Racing Red
<input type="checkbox"/> #217107 - Hollyberry Red	<input type="checkbox"/> #217120 - Sky Blue
<input type="checkbox"/> #217127 - Fence Green	<input type="checkbox"/> #217152 - Stone Gray
<input type="checkbox"/> #217102 - Duke Silver	<input type="checkbox"/> #217113 - Brown Kickplate
<input type="checkbox"/> #217101 - Semi-Gloss Black	<input type="checkbox"/> #217125 - Textured Black

FRAMES

- 18 gauge stainless steel or choice of 12 powder coat colors

GUARDS

- Adjustable 1/4" tempered glass food shield
- Flip-up 1/4" clear acrylic breath guard

SIZES

- All Units available in following lengths
 31-5/8", 45-5/8", 59-5/8", 73-5/8", 87-5/8"

SHORT FORM SPECIFICATIONS:

Thurmaduke Serving Systems - Designer Food Shields. **TS530-xx** Buffet Style - 2-sided, with flip-up acrylic guards, stainless steel or painted top and end panels. 13" wide shelf. **TS530-xx-1SN** - 1 sided, with flip-up acrylic, stainless steel or painted top and end panels. 13" wide shelf. **TS540-xx** - Self Service style with stainless steel or painted top and end panels. 12-1/4" glass front, positive stop guard. **TS550-xx** - Self-Service Style with glass top, painted frame and end panels. 12-1/4" glass front, positive stop guard. **TS560-xx** - Service Style with front glass, stainless steel or painted top and end panels. 13" wide shelf, swing front glass. **TS570-xx** - Service Style with glass top, front glass, painted end panels. **TS580-xx** - Self-Service Style, 2-sided, 2-tier with glass shelves, adjustable front glass, painted end panels. 16-1/2 shelf, positive stop guards. **TS580-xx-1SN** - Self Service Style, 1-sided, 2-tier with glass shelves, adjustable front glass, painted end panels. 16-1/2" shelf, positive stop guards. Choice of twelve (12) powder coat paint colors.



THURMADUKE SERVING SYSTEMS
Designer Food Shields

- TS530-xx** Buffet Style - 2-sided
- TS530-xx-1SN** Buffet Style - 1-sided
- TS540-xx** Self-Service Style, stainless steel top
- TS550-xx** Self-Service Style, glass top
- TS560-xx** Service Style, stainless steel top
- TS570-xx** Service Style, glass top
- TS580-xx** Self-Service Style -2-sided
- TS580-xx-1SN** Self-Service Style - 1-sided

DIMENSIONS: Lengths for all units 31-5/8", 45-5/8", 59-5/8", 87-5/8"

Buffet Style - 2-sided or Single (1SN), w/flip-up acrylic, stainless steel top, painted end panels 18"/45.7cm height.

Model	Weight		Width		Cube crated ft.	Model	Weight		Width		Cube crated ft.	Height for all	
	in.	cm	in.	cm			lbs.	kg	in.	cm		in.	cm
TS530-32	50	22.7	36	91.4	19.3	TS530-32-1SN	35	15.9	22-1/2	57.2	14.6	18	45.7
TS530-46	58	26.4	36	91.4	26.3	TS530-46-1SN	42	19.1	22-1/2	57.2	19.9	18	45.7
TS530-60	78	35.5	36	91.4	33.4	TS530-60-1SN	60	27.3	22-1/2	57.2	25.3	18	45.7
TS530-74	108	49.1	36	91.4	40.5	TS530-74-1SN	88	40.0	22-1/2	57.2	30.7	18	45.7
TS530-88	128	58.2	36	91.4	47.6	TS530-88-1SN	118	53.6	22-1/2	57.2	36.0	18	45.7

Self Service - w/stainless steel top, painted end panels.

Model	Weight		Height		Cube Crated ft.	Width	
	lbs	kg	in.	cm		in.	cm
TS540-32	25	11.4	18	45.7	8.3	13	33.0
TS540-46	31	14.1	18	45.7	11.4	13	33.0
TS540-60	36	16.4	18	45.7	14.5	13	33.0
TS540-74	40	18.2	18	45.7	17.5	13	33.0
TS540-88	44	20.0	18	45.7	20.6	13	33.0

Self Service - w/glass top, painted end panels

Model	Weight		Height		Cube Crated ft.	Width	
	lbs	kg	in.	cm		in.	cm
TS550-32	40	18.2	18	45.7	9.4	16.5	41.9
TS550-46	48	21.8	18	45.7	13.3	16.5	41.9
TS550-60	68	30.9	18	45.7	16.2	16.5	41.9
TS550-74	98	44.6	18	45.7	19.7	16.5	41.9
TS550-88	128	58.2	18	45.7	23.1	16.5	41.9

Self Service - w/adjustable front glass, stainless steel top, painted end panels.

Model	Weight		Height		Cube Crated ft.	Width	
	lbs	kg	in.	cm		in.	cm
TS560-32	54	24.6	18	45.7	8.3	13	33.0
TS560-46	62	28.2	18	45.7	11.4	13	33.0
TS560-60	82	37.3	18	45.7	14.5	13	33.0
TS560-74	112	50.9	18	45.7	17.5	13	33.0
TS560-88	137	62.3	18	45.7	20.6	13	33.0

Self Service - w/glass top, adjustable front glass, painted end panels

Model	Weight		Height		Cube Crated ft.	Width	
	lbs	kg	in.	cm		in.	cm
TS570-32	58	26.4	18	45.7	9.4	16.5	41.9
TS570-46	78	35.5	18	45.7	13.3	16.5	41.9
TS570-60	108	49.1	18	45.7	16.2	16.5	41.9
TS570-74	128	58.2	18	45.7	19.7	16.5	41.9
TS570-88	148	67.3	18	45.7	23.1	16.5	41.9

Self Service - 2-sided or Single (1SN), 2 tier, w/ glass shelves, adjustable front glass, painted end panels. 20"/50.8cm height

FREIGHT CLASS 150

Model	Weight		Width		Cube crated ft.	Model	Weight		Width		Cube crated ft.	Height for all	
	in.	cm	in.	cm			lbs.	kg	in.	cm		in.	cm
TS580-32	85	38.6	36	91.4	16.5	TS580-32-1SN	65	29.6	16-1/2	41.9	12.6	20	50.8
TS580-46	100	45.5	36	91.4	22.5	TS580-46-1SN	80	36.4	16-1/2	41.9	17.3	20	50.8
TS580-60	120	54.6	36	91.4	28.6	TS580-60-1SN	100	45.5	16-1/2	41.9	21.9	20	50.8
TS580-74	145	65.9	36	91.4	34.7	TS580-74-1SN	125	56.8	16-1/2	41.9	26.6	20	50.8
TS580-88	165	75.0	36	91.4	40.8	TS580-88-1SN	145	65.9	16-1/2	41.9	31.2	20	50.8



"Your Solutions Partner"

DUKE MANUFACTURING CO.
 2305 N. Broadway
 St. Louis, MO 63102

800.735.3853 Toll Free
 314.231.5074 Fax
 www.dukemfg.com

Specification subject to change

06/08
 Printed in U.S.A
 © 2008, Duke Manufacturing Co.