

Shelving Unit Accessories [For Posts or Shelves]

S Hooks



93333 93333GN 93333BK

Use to eliminate 2 posts per adjacent unit. Two hooks required per shelf. Chromate, green, or black epoxy coated. Packed 2 per package.

U Clamps



FPSSH

Use to eliminate 2 posts per adjacent unit. Two hooks required pershelf. Heavy gauge stainless steel to connect 2 FPS-Plus polymer shelf panels and truss side-by-side. Packed 2 per package.

Split Sleeves

FFSALSLV



Black plastic, one bag required per shelf. Packed 4 sets per package. 30058

Aluminum split sleeves for high temperature, demanding, or conductive applications. Zinc retainer rings. 4 sets per bag. 1 set required per shelf. *Requires 2" retaining [snap] pliers to install (not included).*

Triangular Feet

FTSFZ



When additional stability is needed or to bolt units to the floor. Zinc plated. Packed 4 per package.

Leveling Assembly

FLEVASM



Zinc die-cast post insert and zinc plated threaded bolt with gray polymer cover to protect floors. Packed 4 assemblies per package.

Gray plastic replacement covers [FPFC] are packed 4 per package.

Caps for shelves or posts

FCSC



Chromate caps to fill shelf corner openings. Packed 4 per package.

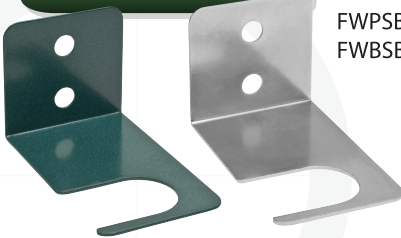
Plastic post caps to fill top of 1" (2.5 cm) posts. Packed 4 per package.



FPLASCAP

Universal Brackets

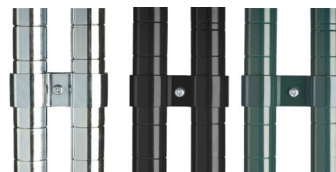
FWPSBGN
FWBSBCH



Brackets provide the opportunity to secure a unit to the wall for greater safety and security. Spacing is 2" (5.1 cm) off wall. Chromate or green epoxy finish.

Post Clamps

FXHAND18C
FXHAND24C



Secure shelving units together for maximum strength. It is recommended to use clamps at the front and back of the unit. Chromate, black or green epoxy coated.

FPOCL
FPOCLBK
FPSPC

Extended Handles



Chromate Finish For use with 18" (45.7 cm) or 24" (61.0 cm) wide shelves, Adds more maneuverability and control to mobile units. Includes 2 sets of plastic sleeves.

Item #	Description	Case
93333	S-Hook/shelf connectors - chromate finish, 2 per pkg	50
93333BK	S-Hook/shelf connectors - black epoxy coated, 2 per pkg	50
93333GN	S-Hook/shelf connectors - green epoxy coated, 2 per pkg	50
FPSSH	U-Hook/shelf connectors - green epoxy coated, 2 per pkg	96
30058	Replacement sleeves, 4 sets per pkg	12
FFSALSLV	Tapered aluminum split sleeves, 4 pair per pkg	150
FPFC	Plastic caps for post leveling feet, 4 per pkg	50
FLEVASM	Zinc plated leveling assemblies, 4 per pkg	20
FTSFZ	Triangular security feet, zinc, 4 per pkg	25

Item #	Description	Case
FCSC	Chromate shelf caps, 4 per pkg	250
FPLASCAP	Plastic post caps, 4 per pkg	50
FWPSBCH	Security bracket, chromate, 2 per pkg	24
FWPSBGN	Security bracket, green epoxy, 2 / pkg	24
FPOCL	Post clamps, chromate finish, 4 per pkg	25
FPOCLBK	Post clamps, black epoxy, 4 per pkg	25
FPSPC	Post clamps, green epoxy, 4 per pkg	25
FXHAND18C	18" (45.7 cm) extended handle	8
FXHAND24C	24" (61.0 cm) extended handle	8