



# Keg Capacity Guide

## for Draft Beer Coolers





# Draft Beer Cooler Keg Capacity Guide

Standard Keg Sizes & Single Door Units

**1 Typical Half Barrel**

16-1/8" 16-1/8"

**2 Typical Quarter Barrel**

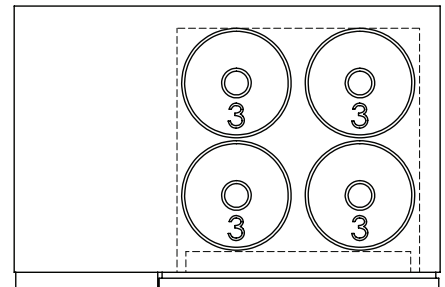
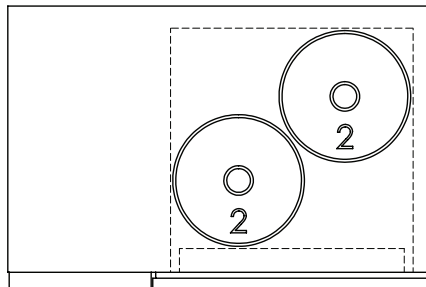
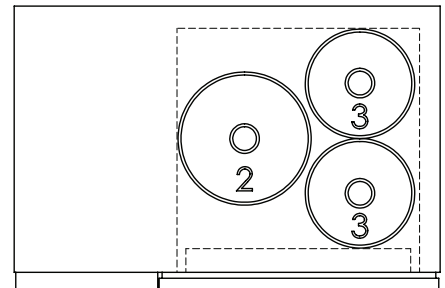
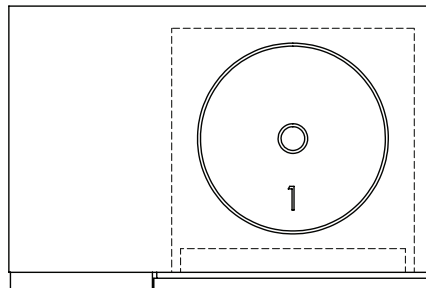
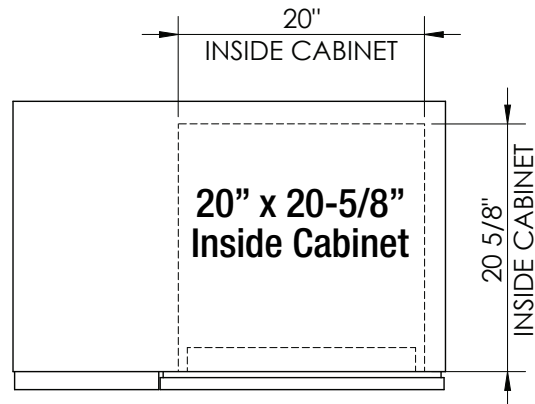
11-1/8" 11-1/8"

**3 Typical Sixth Barrel**

9-1/4" 9-1/4"

## Single Door Units

Models beginning with DB36



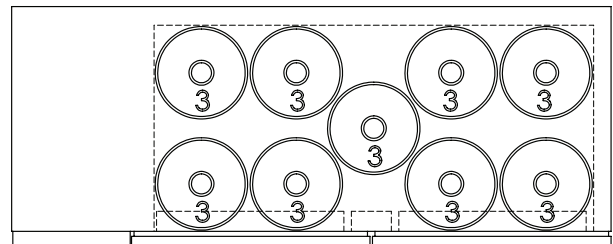
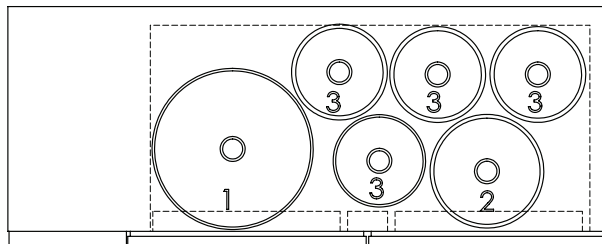
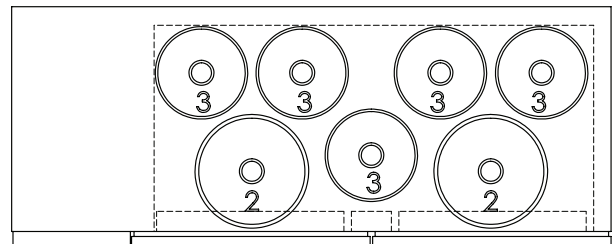
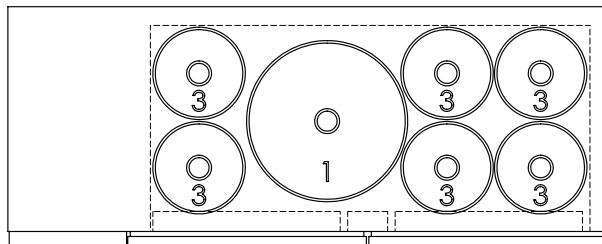
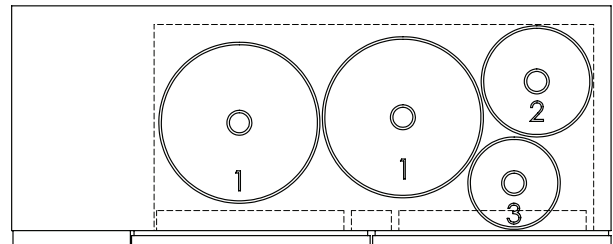
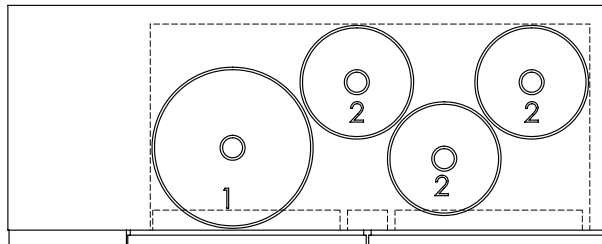
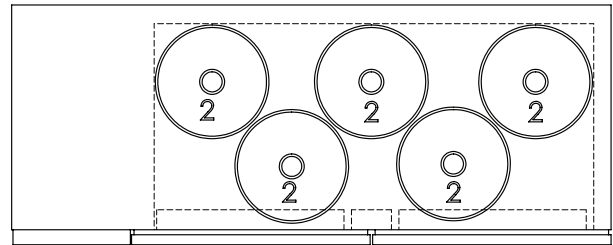
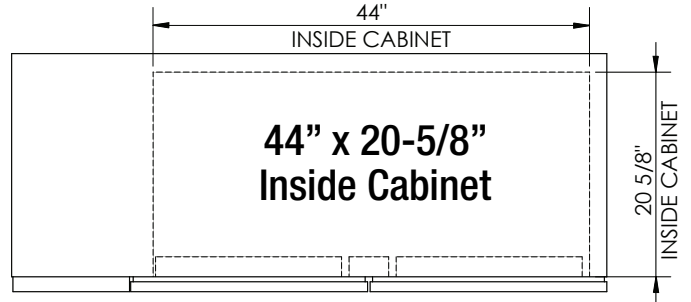


# Draft Beer Cooler Keg Capacity Guide

Two Door Units

## Two Door Units

Models beginning with DB60



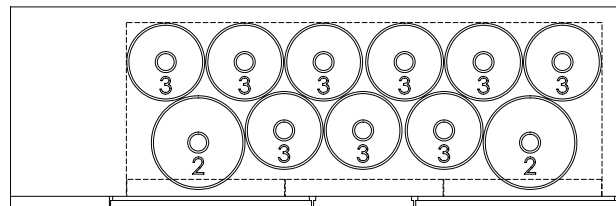
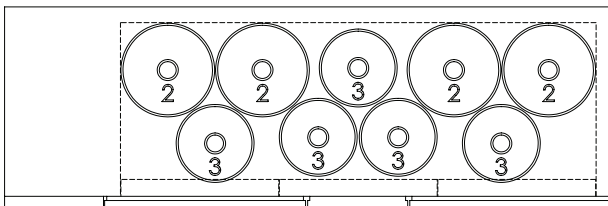
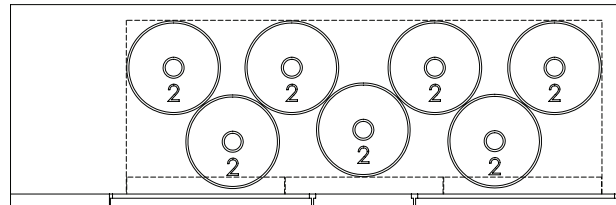
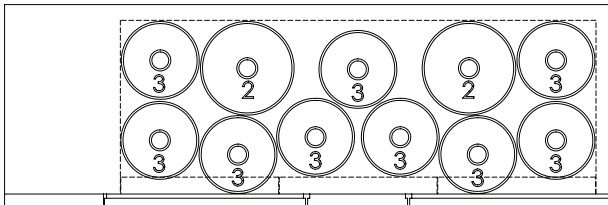
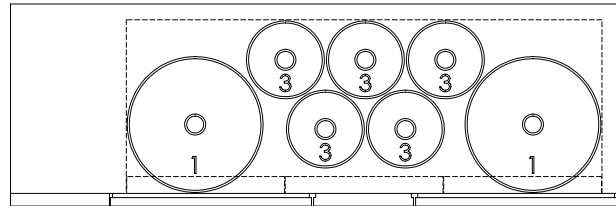
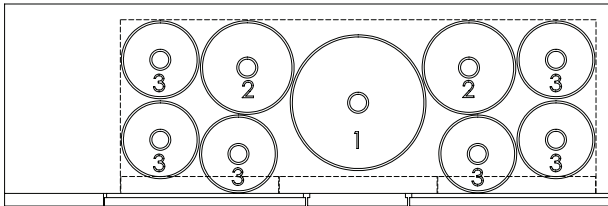
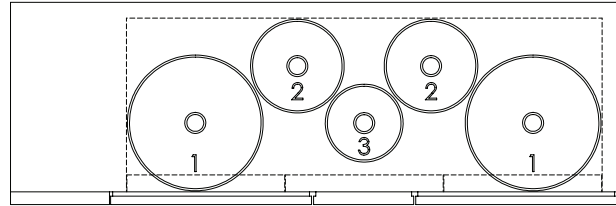
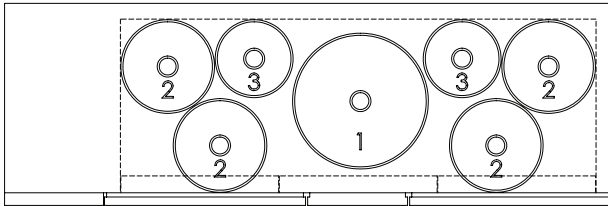
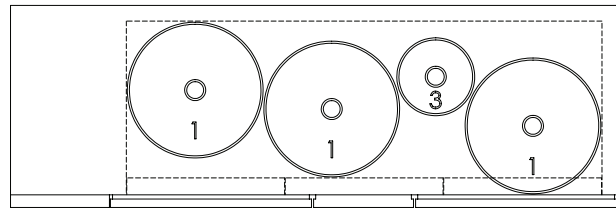
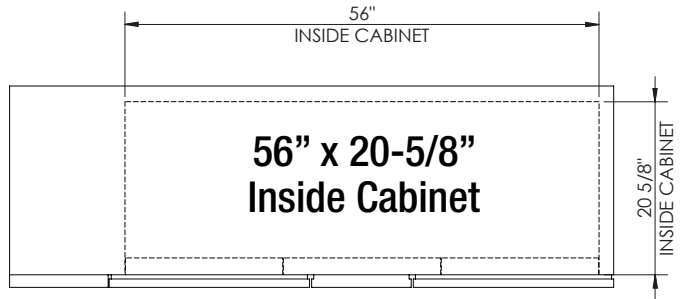


# Draft Beer Cooler Keg Capacity Guide

Two Door Units

## Two Door Units

Models beginning with DB72





# Draft Beer Cooler Keg Capacity Guide

## Three Door Units

### Three Door Units

Models beginning with DB84

