



**QUICK SHIP**  
Walk-In Coolers & Freezers  
With Matching Refrigeration Systems

# QS Series Models

## Walk-Ins With Matching Capsule Pak™ Systems

### Features

- Available from 4' x 6' to 10' x 14'
- Available in 3 heights: 6'7" & 7'7" with floor, 7'4" less floor
- Capsule Pak™ refrigeration system featuring a flush coil to allow 100% usable interior space
- Temperatures: +35°F and -10°F
- Cooler or freezer models
- Door closer - spring actuated
- Exterior finish is corrosion resistant stucco embossed coated steel
- Full 4" panel foamed-in-place with EPA-compliant polyurethane insulation
- Indoor models (outdoor available soon)
- Installation is fast and easy
- NL 9800 deadbolt locking handle for security
- NL 2400 adjustable spring loaded door hinge
- High output low profile LED light positioned above the door to prevent interference with shelving or product
- 15 year panel warranty
- Approvals:
  - NSF, UL flame spread 25 or less on foam cores
  - UL and CSA electrical listing on door sections
  - City of Houston listed
  - California State listed
  - CN UL flame spread listed
  - DOE compliant
  - Oregon State listed
  - USDA accepted

### Options

- Condensing unit air deflector kit on outdoor models
- Exterior ramp
- Floor tread plate kit
- Heater kit for cooler located outdoors in below +32°F ambient
- Heights: 6'7" & 7'7" with floor, 7'4" less floor
- 8'7" and 8'4" heights available in models up to 8' x 14' size (with restrictions)
- Leak detector/alarm (may be a requirement in some areas)
- Additional LED lighting
- 5 year compressor warranty
- Specially designed shelving kits
  - Flexible shelf adjustment in 1" increments
  - Shelving layouts utilize maximum space for storage leaving the door opening clear of end standards
  - Green Kote™ special epoxy-coated finish provides extra protection from acidic foods
  - Quick and easy assembly
  - Rigid construction
  - Stronger shelves
  - Optional U-shaped systems
- 5" thick panel models available to meet CEC (additional lead time required)



Shelving kits



Door & frame kickplates  
(shipped loose)

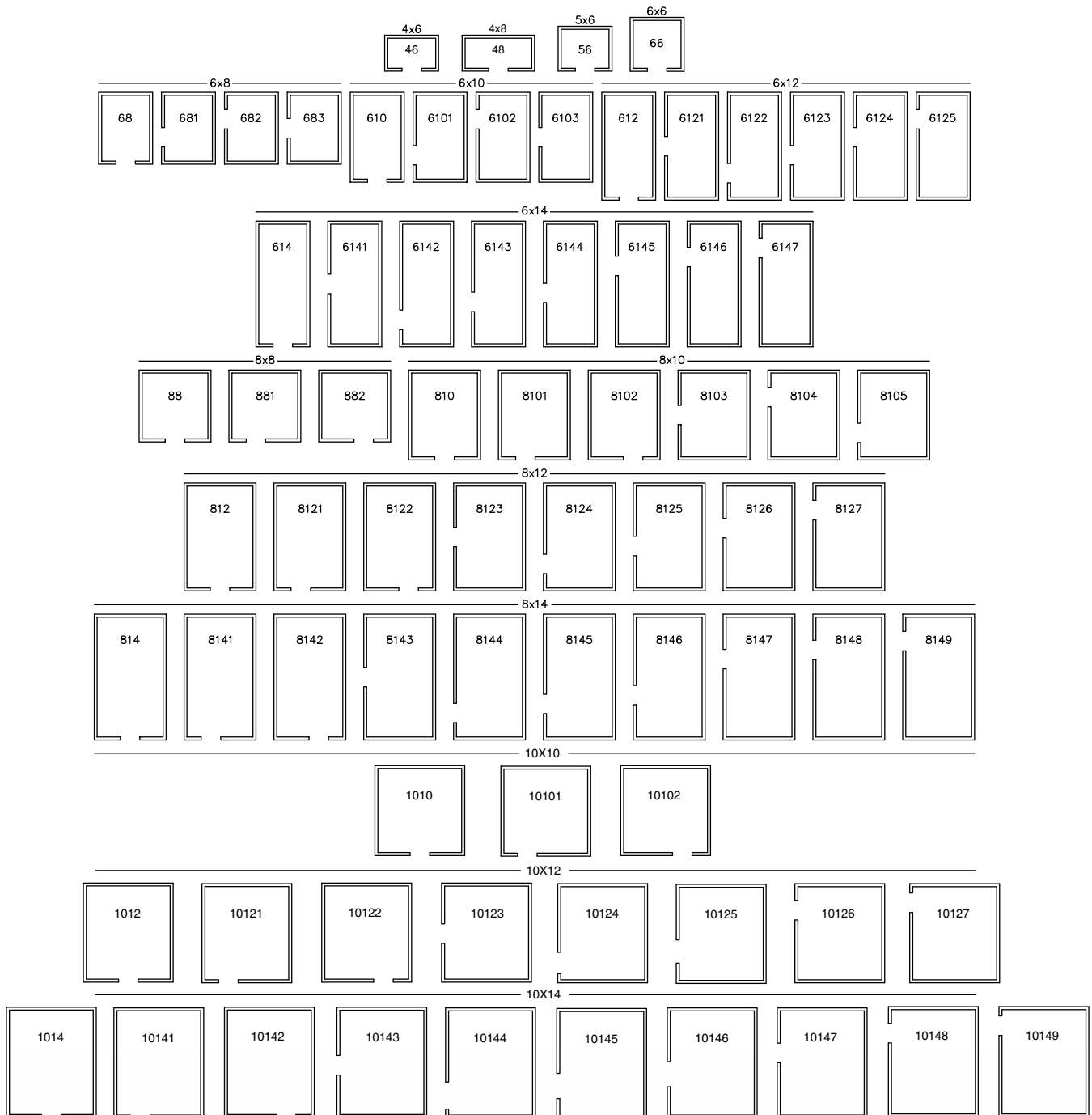


Exterior floor ramps

# QS Series Models

## Walk-Ins With Matching Capsule Pak™ Systems

### Floor Plan Layouts For Single Room Coolers & Freezers



# Quick Ship Models With Remote Refrigeration

## Features

- Available in widths of: 6', 7' & 8'
- Unlimited lengths in 1' increments
- Heights: 7'7" & 8'7" with floor, 7'4" & 8'4" floorless
- Coolers, freezers or combination cooler/freezers
- Exterior finish is corrosion resistant stucco embossed coated steel
- Full 4" panel foamed-in-place with HFC free HFO polyurethane insulation
- Indoor or outdoor models
- Fast and easy installation
- 30" or 36" self-closing door
- Digital thermometer and light switch
- NL2400 adjustable spring loaded hinge
- Spring actuated door closer
- Deadbolt locking handle for security
- Pre-assembled remote refrigeration systems in stock for 5 day shipment
- Temperatures: +38°F, +35°F, -10°F
- 15 year panel warranty - Industry leading
- Approvals:
  - NSF listed
  - UL flame spread of 25 or less
  - ULC listed flame spread
  - UL and CSA electrical listing on door sections
  - City of Houston listed
  - California State listed
  - Oregon State listed
  - USDA accepted

## Options

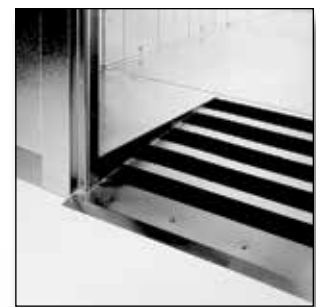
- 9', 10', 11' & 12' width\*
- Aluminum diamond tread or stainless steel interior and exterior kickplates
- With floor/less floor combination\*
- Exterior ramp (with floor models)
- Interior ramp\*
- Non-skid strips (shipped loose)
- Extra vapor-proof lights (shipped loose)
- LED Lighting
- Outdoor membrane roof systems
- Secure Guard™ locking system (factory installed)
- Viewports
- Strip curtains (shipped loose)
- Door rain hoods
- Indoor remote refrigeration system
- Specially designed shelving kits
  - Flexible shelf adjustment in 1" increments
  - Shelving layouts utilize maximum space for storage leaving the door opening clear of end standards
  - Green Kote™ special epoxy-coated finish provides extra protection from acidic foods
  - Quick and easy assembly
  - Rigid construction
  - Stronger shelves
  - Optional U-shaped systems



Viewports  
(freezer ports heated)



LED lighting

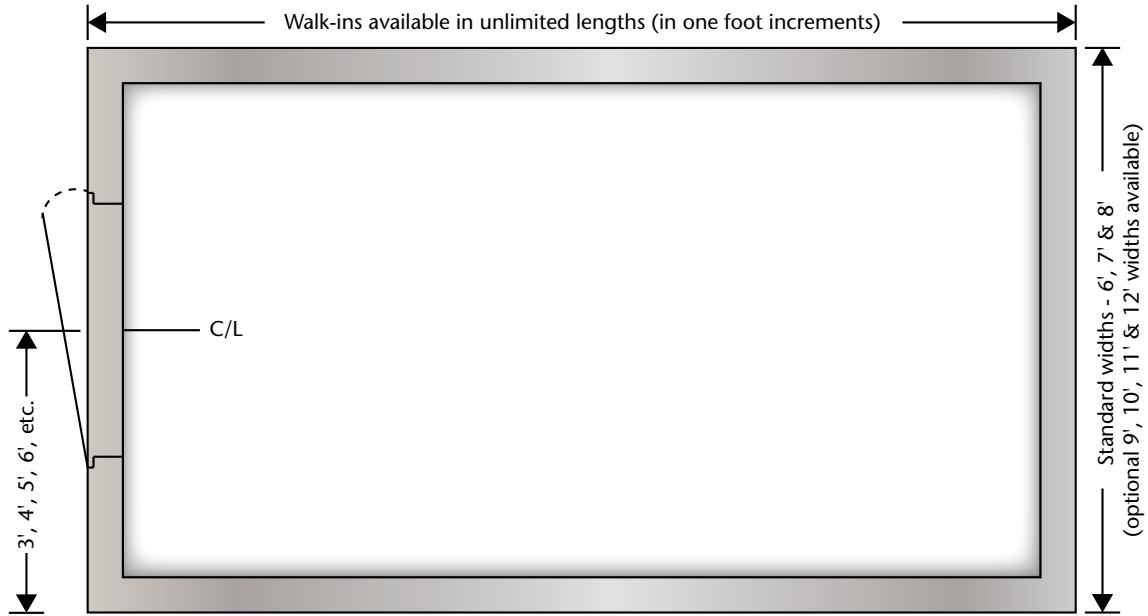


Interior floor ramps\*

\*Available with 10-day shipment

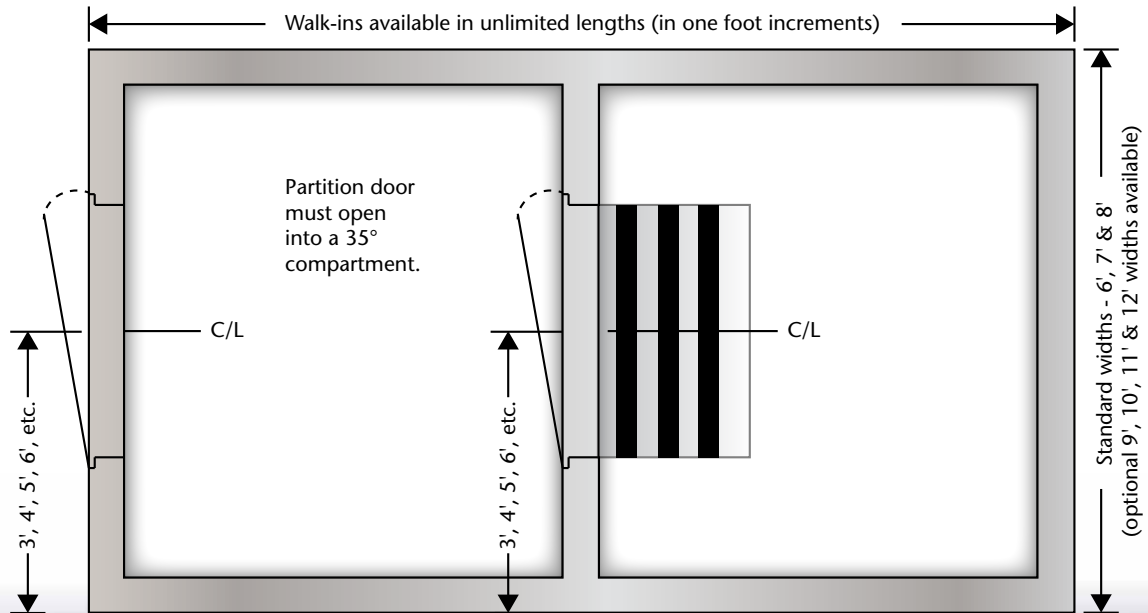
# Quick Ship Models With Remote Refrigeration

## Floor Plan Layout For Single Room Coolers & Freezers



Walk-in door may be located on any wall.

## Floor Plan Layout For Combination Coolers & Freezers



Walk-in door may be located on any wall.

# Capsule Pak™ Self-Contained Refrigeration Systems Specified for QS Series models 14' long and under.

Designed for quick and simple installation, Capsule Pak systems consist of a condensing unit and evaporator coil contained in a single housing ready to mount on top of your Master-Bilt walk-in.

- Easier servicing with many evaporator components accessible from inside/underneath vs. on top
- Standard Copeland Scroll™ compressors on most models for increased efficiency
- Electronic controller standard for increased reliability, connectivity and food safety
- Eco-friendly R449A refrigerant
- DOE, SNAP and CARB compliant
- Industry leading 18 month parts and labor and five year compressor warranty



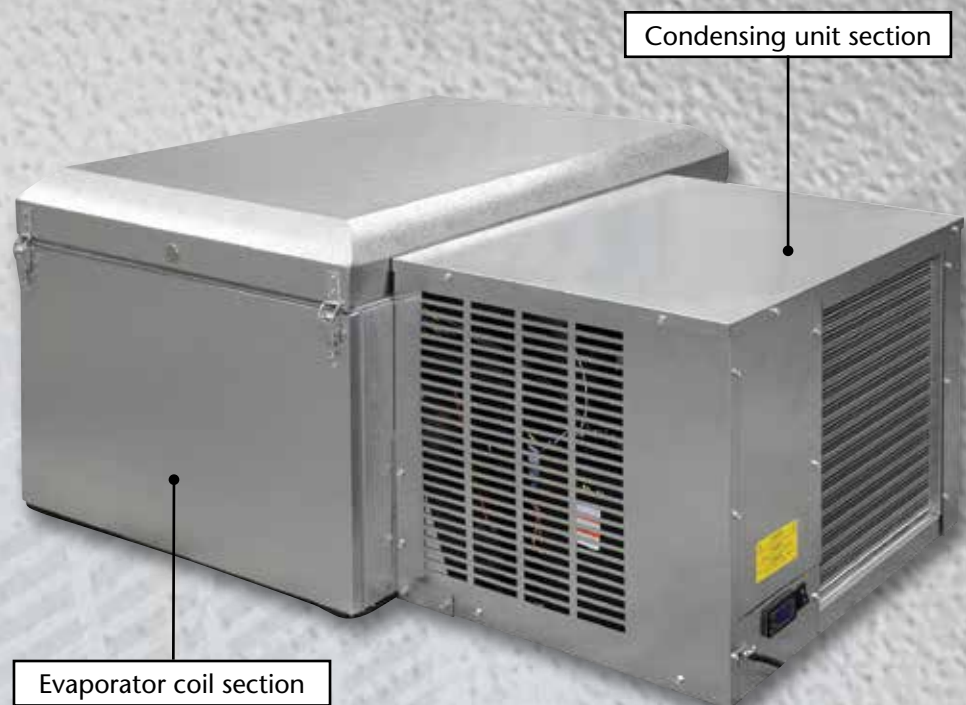
*The Capsule Pak evaporator grille mounts flush in a standard 4" thick ceiling panel allowing maximum storage space inside the walk-in.*



*Capsule Pak units are easily installed with no floor drain required on indoor models.*

## Capsule Pak Refrigeration System Design

All models consist of a condensing unit and evaporator coil contained in a single housing.



# Split-Pak™ Remote Refrigeration Systems

When the application calls for remote refrigeration, Master-Bilt provides a Split-Pak system consisting of a condensing unit and evaporator coil sized to fit requirements.

- Designed to withstand the harshest conditions, Split-Pak condensing units contain the most efficient combination of condenser coil, fan and fan motor available
- All components are pre-wired and factory assembled on a galvanized steel angle leg base
- Horsepower ranges from 1/2 to 15 H.P.
- Six H.P. and above units used in freezer applications are equipped with the Master Controller electronic controller system as standard
- Condensing units are provided with factory pre-mounted and wired time clocks in both medium and low temp versions

- Evaporator coils are ready to mount in position and are available in air (off cycle) defrost for coolers and electric defrost for freezers
- Each coil is also furnished with a properly-sized expansion valve and room thermostat
- Electric defrost coils feature defrost termination-fan delay controls and drain line heaters.
- Standard energy efficient EC motors on quick ship coils.
- One year limited parts and labor warranty and an extended four year warranty on the compressor
- Dedicated medium temp outdoor condensing units meet the DOE requirement of a minimum AWEF rating of 7.61 (Btu/W-h).

## Remote Refrigeration Systems

The most efficient condensing unit and evaporator coil combinations



*Energy efficient EC motors are standard on Split-Pak evaporator coils.*

*Options include:*

- *Pre-assembled kit (expansion valve and properly-sized orifice factory pre-mounted)*
- *Factory-installed liquid line solenoid/temp control kit (pre-assembled kit required)*

*Split-Pak condensing units are standard with generously-sized condensers for maximum performance in harsh environments. Each unit is pre-piped and pre-wired at the factory for convenient installation.*



For the latest product information and specifications go to [www.master-bilt.com/products/products.htm](http://www.master-bilt.com/products/products.htm).



727 Second Street • Hudson, WI 54016  
800-647-1284 • [master-bilt.com](http://master-bilt.com)



Due to continuous product enhancements, we reserve the right to change specifications without notice.

1451-10/20 ©2020 Master-Bilt Products, LLC. All rights reserved. Printed in U.S.A.