

Spatulas, Spreaders, Servers & Bakery Items (continued)

17403 S284-4¼ 4¼" cream cheese spreader (NSF)



17413 S284-6 6" baker's spatula



17433 S284-6½ 6½" frosting spatula (NSF)
19803 S284-6½PCP* 6½" frosting spatula



17443 S284-8 8" baker's spatula
19813 S284-8PCP 8" baker's spatula (NSF)
17453 S284-10 10" baker's spatula
19823 S284-10PCP 10" baker's spatula



17463 S284-12 12" baker's spatula
19983 S284-12PCP 12" baker's spatula (NSF)
17473 S284-14 14" baker's spatula
19993 S284-14PCP 14" baker's spatula



Sharpeners & Butcher Steels

07920 EDGE-1 EZ Edge hand-held knife sharpener



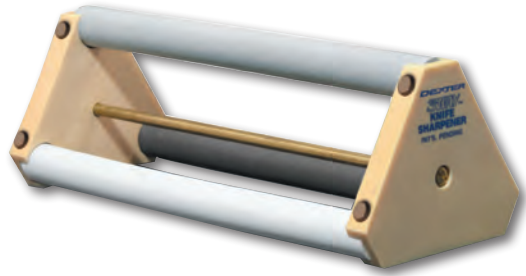
07921 EDGE-2 2-stage hand-held knife sharpener



*For colored handles, add color code suffix to item and/or product number

Sharpeners & Butcher Steels (continued)

07080 3-WAY 3-rod ceramic knife sharpener



07613 DDS-10PCP 10" diamond sharpener
07633 DDS-12PCP 12" diamond sharpener
07633B DDS-12B-PCP 12" diamond sharpener, black handle
28273 DDS-10C 10" diamond sharpener, carded



07603 DDS-10S-PCP 10" diamond sharpener w/swivel
07623 DDS-12S-PCP 12" diamond sharpener w/swivel



07333 10SXL-PCP ½" x 10" knife sharpener
07343 12SXL-PCP ½" x 12" knife sharpener
07363 14SXL-PCP ½" x 14" knife sharpener



07010 P8 ½" x 8" ceramic sharpener
07020 P10 ½" x 10" ceramic sharpener
07050 R12B ½" x 12" ceramic sharpener



07353 1012B ½" x 10" butcher steel
07373 1212B ½" x 12" butcher steel
07393 1412B ½" x 14" butcher steel



Turners - Heat Resistant

19673H S186½H-PCP 6½" x 3" slotted fish turner, High-Heat (NSF)



THE EDGE SINCE 1818