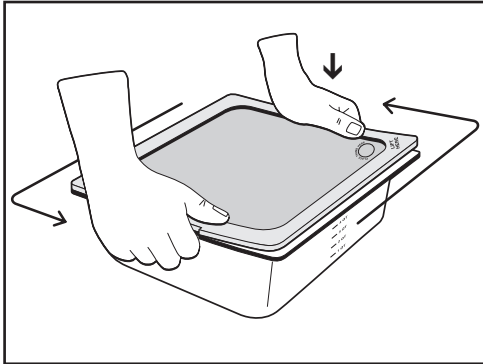


# SMART LID™ INSTRUCTIONS

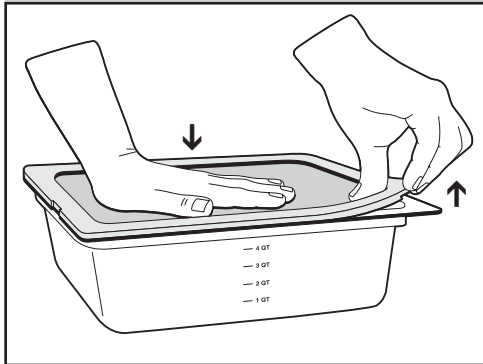
For use with Top Notch™ Food Pans



# 1

## Step 1. Attaching Lid

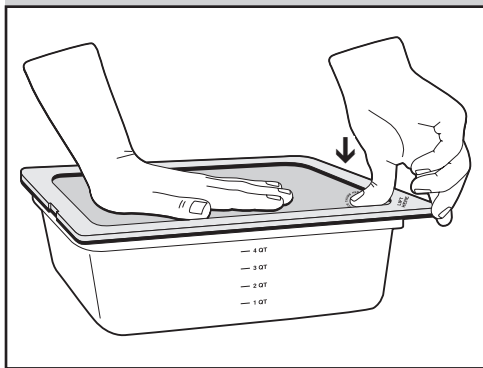
Press all edges of lid into pan; making sure both end tabs snap onto the pan.



# 2

## Step 2. Creating a Secure Seal

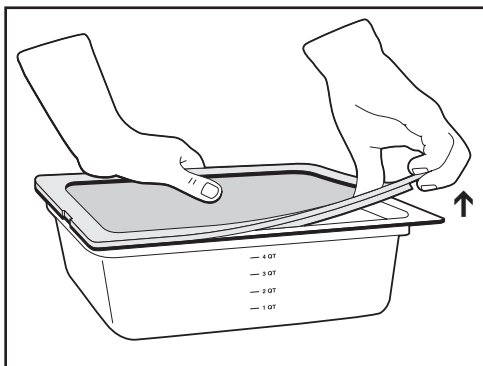
Press down on the center of the lid with one hand. With the other hand, pull up on the indicated corner of the lid, to release any trapped air.



# 3

## Step 3. Securing the Seal

**IMPORTANT:** Continue to press down on the center of the lid and snap the indicated corner down onto the pan. After you snap the corner down, make sure the end tabs are firmly snapped.



# 1

## Step 1. Opening Lid

At the indicated corner, place thumb in correct position and lift on the corner.

### Worldwide Headquarters:

P.O. Box 53006  
Oklahoma City, Oklahoma 73152-3006  
(405) 475-5600 • FAX (405) 475-5607  
1-800-654-8210  
www.carlislefsp.com

### European Distribution Center:

Edisonstraat 84, P.O. Box 110  
6900 AC Zevenaar, The Netherlands  
Tel +31/(0)316-596550 • Telex 45642  
FAX +31/(0)316-333867  
#104803841 2/02

**CARLISLE**  
FoodService Products