

MOTAK

Gas Charbroiler Countertop Model

Model #: **MBR24 & MBR36**

These gas charbroilers are available in 24-, 36-, and 48-inch widths, all with efficient 12-inch U-shaped burners with metal radiants that provide high broiler flames every 6 inches. It has highly responsive temperature controls every 12 inches that make it easy to achieve consistent heat distribution.

These units provide a wide range of cooking temperatures, so you can cook larger and leaner pieces of meat – such as brisket, pork shoulder, and ribs – at low heat or crank up the flames for Pittsburgh-style ribeye, sirloin, and prime rib.

These charbroilers have a 1-year parts and labor warranty. Units ship ready for use with natural gas, but can easily be converted to LP (propane) gas with the included conversion kit. All charbroilers carry ETL gas and sanitation approvals that meet US gas and sanitation requirements for use in restaurants.

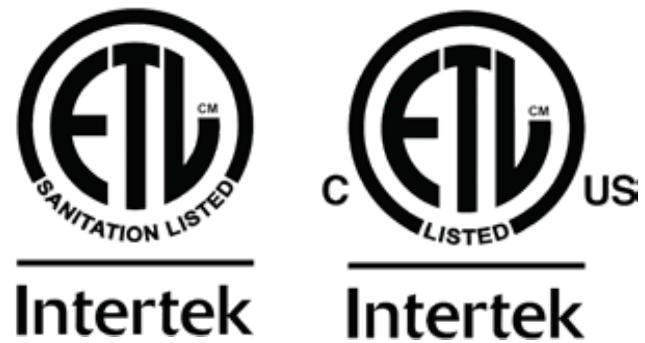
Not suitable for installation in non-commercial or residential applications.



Warranty

1 year parts & labor

Certifications



MBR-24



MBR-36

Product Details

- High-performance, efficient 35,000 BTU burners
- Stainless steel, U-style burners provide flame every 6" on the charbroiler's surface
- Heavy-duty, 10-gauge stainless steel radiants provide consistent heat distribution and protect burners from clogging
- 4" high backsplash and sidesplashes to prevent splatters
- Front-access pilot
- Extended cool-to-touch front edge
- Full-width stainless grease catch pan is removable and easy to clean
- All grates and radiants are removable for cleaning
- Large knobs with set screws
- Adjustable, non-skid stainless steel legs

MOTAK reserves the right to make changes to the design or specifications without prior notice.

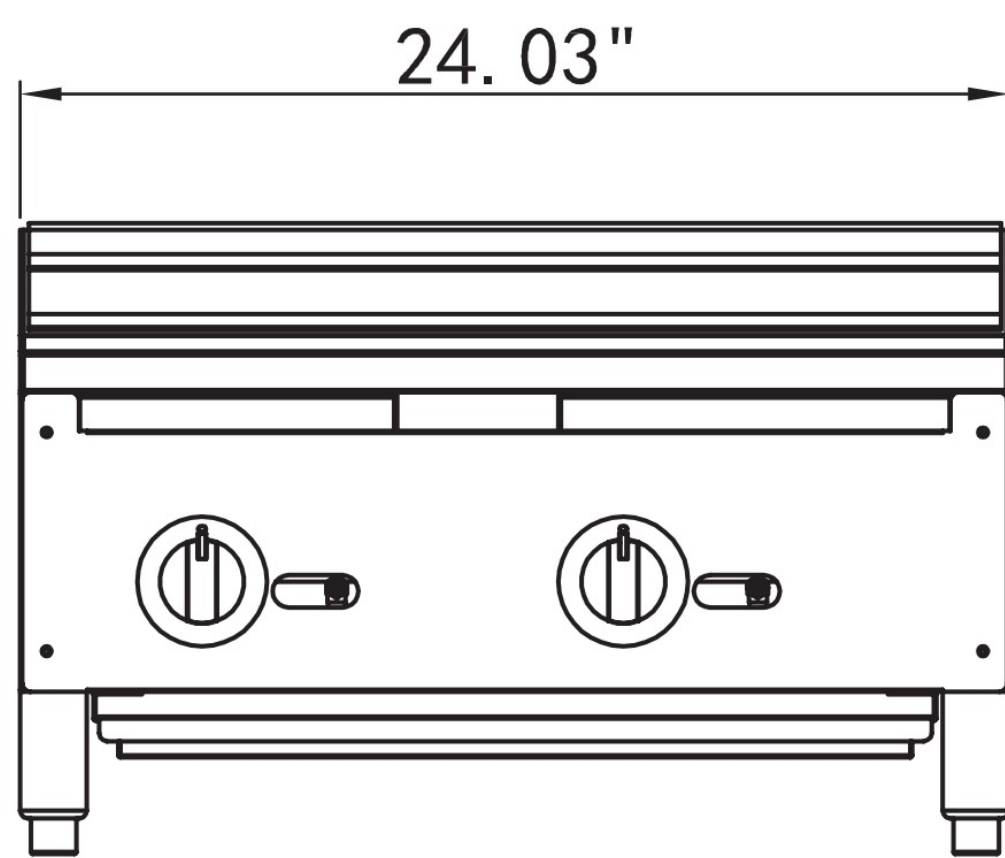
JAN0621

Gas Charbroiler - Countertop Model

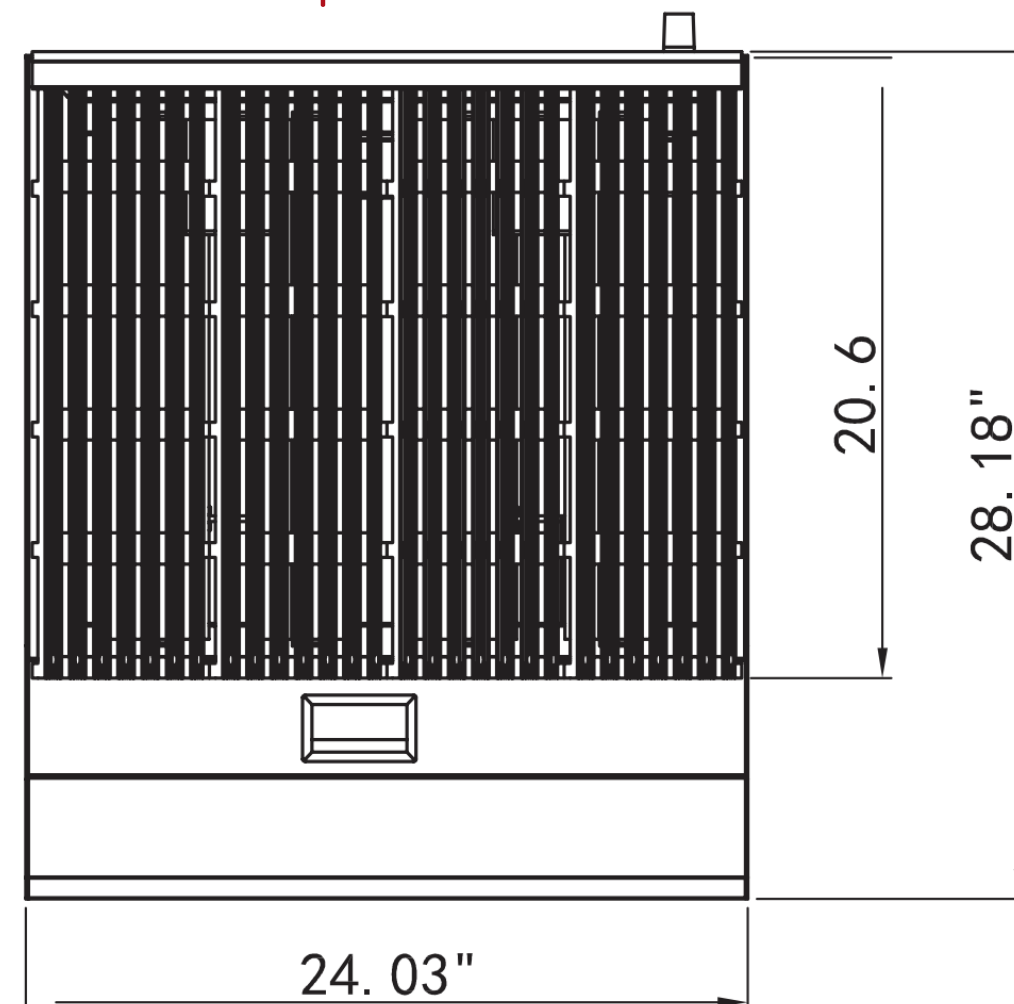
- A pressure regulator is provided with this unit
 - Natural Gas 4.0" W.C.
 - Propane Gas 10.0" W.C.
- Gas connection is 3/4" NPT (19mm) rear gas connection
- Supplied ready for use with natural gas with an LP conversion kit included

Plan View

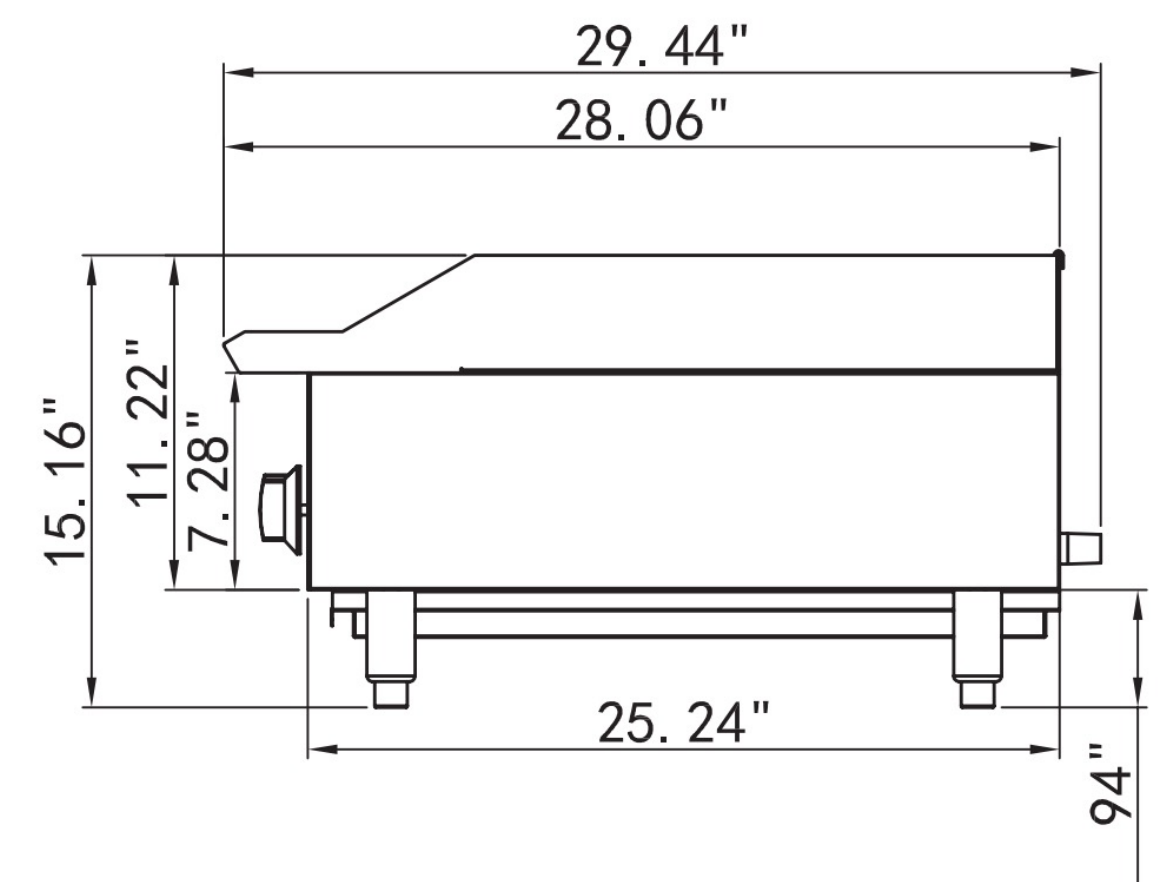
MBR24 - Front View



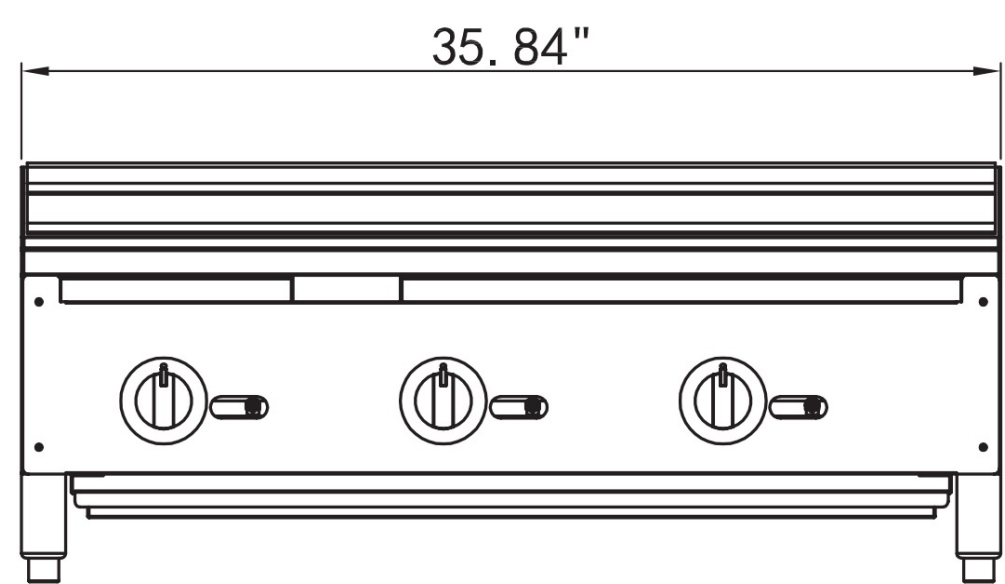
MBR24 - Top View



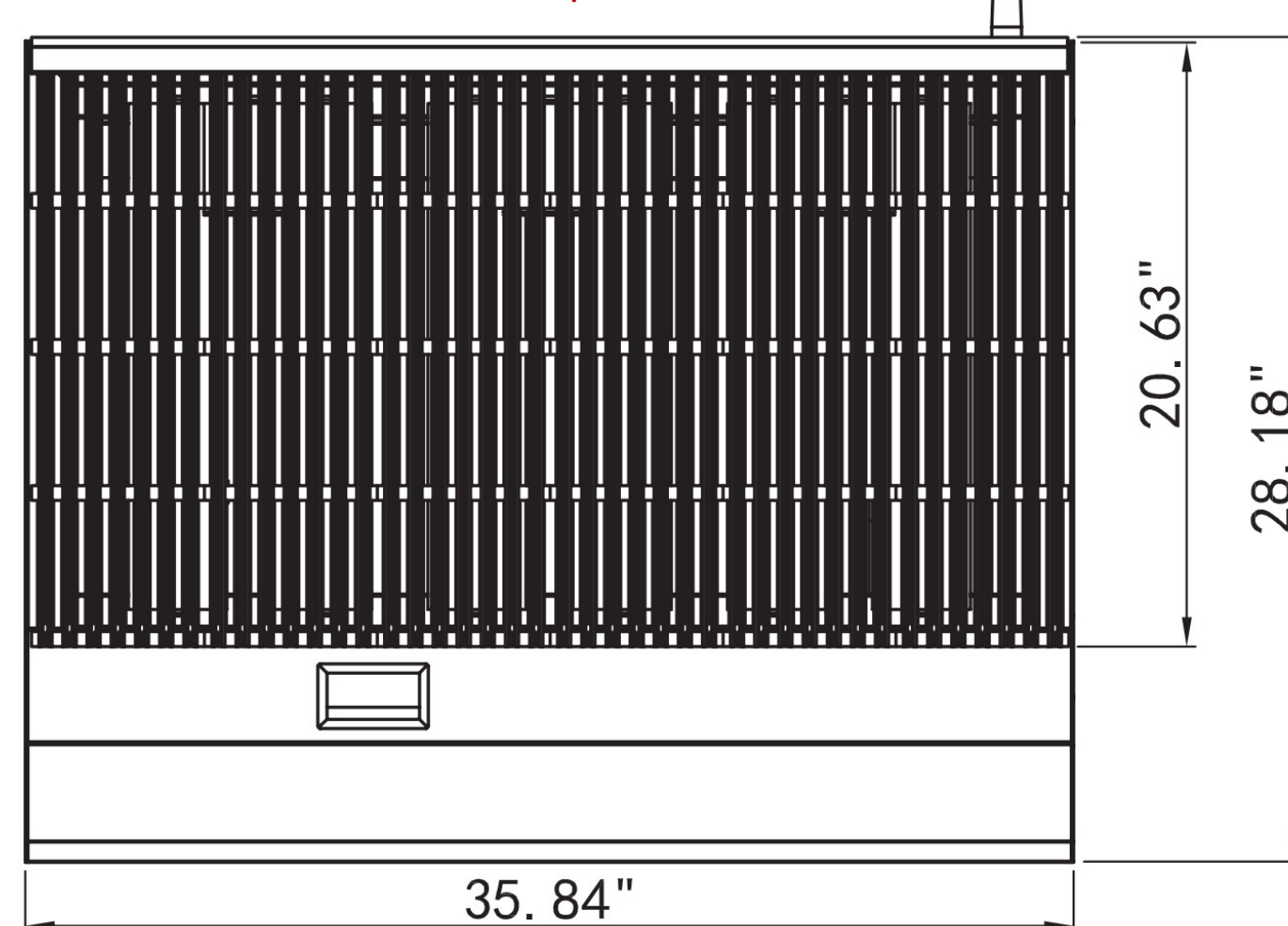
MBR24 & MBR36 Side Views



MBR36 - Front View



MBR36 - Top View



Specifications

Model	Burners	Cooking Area		Controls	Dimensions			BTUs Per Burner	Total BTUs	Crated Weight (lbs)
		Length	Width		Width	Depth	Height			
MBR24	2	20.25"	23.5"	Manual	24.03"	29.44"	15.16"	35,000	70,000	150 lbs.
MBR36	3	20.25"	35.5"	Manual	35.84"	29.44"	15.16"	35,000	105,000	218 lbs.

Not suitable for installation in non-commercial or residential applications.