

ONLY FROM

nemco[®] | FOOD
EQUIPMENT

Easy FryKutter™ & Monster FryKutter™

Choose Easy FryKutter for labor savings and improved productivity.
Or power through the biggest spuds at lightning speed with the one
and only Monster FryKutter.



Easy FryKutter
Vegetable Cutter



Monster FryKutter
Vegetable Cutter

Buy once. Buy the original.
Always look for this mark of quality



Get a Handle on a Real Hot Potato!

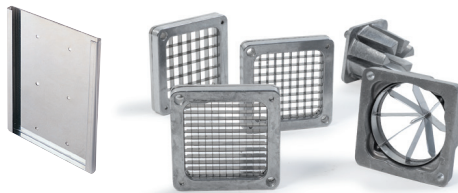
Easy FryKutter™

It really is as easy as it looks with the Easy FryKutter. Thanks to the exclusive short-throw handle and superior engineering, the Easy FryKutter provides the leverage needed for smooth, easy cutting or wedging in just one stroke.

Simply use your natural body motion to eliminate awkward stretching and reduce operator fatigue. These machines are built to last for years under the toughest conditions. And the standard slide-in, slide-out wall bracket fits the same mounting holes as most other machines.

Suggested Uses

Cut potatoes for French fries, and cut celery sticks. Chop onions, peppers and tomatoes. Wedge tomatoes for salads, potatoes for steak fries and even fruits!

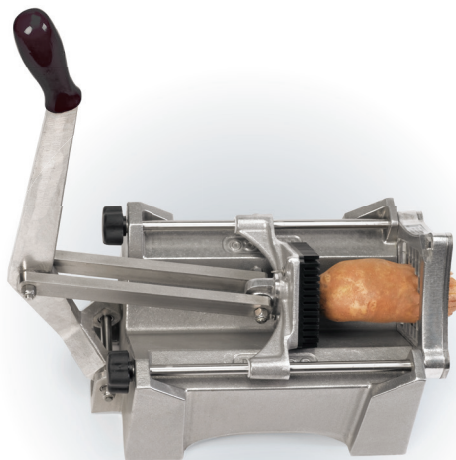


Monster FryKutter™

Even the biggest potatoes fear the Monster! The Monster FryKutter is the first potato-cutting tool capable of taking on the most massive potatoes and delivering a big 1/4", 3/8" or 1/2" square cut product. The special blade-assembly design minimizes operator fatigue and maximizes productivity.

Suggested Uses

Improve the yield from your vegetables and maximize profit potential on your orders for French fries or steak fries with this beast. It's also useful for cutting other large, firm vegetables, including colossal onions, celery, bell peppers and more.



Replacement parts are available through Nemco's 24-hour Zip Program.

Nemco reserves the right to make design, specification or model changes without notice.

General Specifications

Model	Description
55450-1	1/4" Cut
55450-2	3/8" Cut
55450-3	1/2" Cut
55450-4	4-Section Wedge
55450-6	6-Section Wedge
55450-8	8-Section Wedge

Optional Accessories

55641	Wall Bracket
55727-4	4-Section Wedger Kit
55727-6	6-Section Wedger Kit
55727-8	8-Section Wedger Kit
55424-1	1/4" Cut Blade Assembly
55424-2	3/8" Cut Blade Assembly
55424-3	1/2" Cut Blade Assembly
436-1 (set of 22)	1/4" Cut Replacement Blade
436-2 (set of 16)	3/8" Cut Replacement Blade
436-3 (set of 10)	1/2" Cut Replacement Blade
428-4	4-Section Wedge, Replacement Blade
428-6	6-Section Wedge, Replacement Blade
428-8	8-Section Wedge, Replacement Blade

Dimensions

Equipment (w x d x h)	8" x 12 1/2" x 15 1/2"
Shipping Carton (l x w x h)	17 1/2" x 10 1/2" x 4"
Equipment Weight	10.8 lbs
Shipping Weight	12 lbs

General Specifications

Model	Description
56450A-1	1/4" Sq. Cut, Stainless Blade Assembly
56450A-2	3/8" Sq. Cut, Stainless Blade Assembly
56450A-3	1/2" Sq. Cut, Stainless Blade Assembly

Optional Accessories

56424A-1MK	1/4" Sq. Cut Blade Assembly
56424A-2MK	3/8" Sq. Cut Blade Assembly
56424A-3MK	1/2" Sq. Cut Blade Assembly
536-1	1/4" Sq. Cut Replacement Blade
536-2	3/8" Sq. Cut Replacement Blade
536-3	1/2" Sq. Cut Replacement Blade

Dimensions

Equipment (w x d x h)	10 1/4" x 18 7/16" x 15 3/16"
Shipping Carton (l x w x h)	13" x 18" x 23"
Equipment Weight	24.5 lbs
Shipping Weight	34 lbs



nemco | FOOD EQUIPMENT

Physical Address: Corporate HQ
301 Meuse Argonne | Hicksville, OH 43526
800.782.6761 • 419.542.7751 • f: 419.542.6690

Mailing Address:

PO Box 305 | Hicksville, OH 43526

Nemco West Distribution Center/Test Kitchen
4300 E Magnolia Street | Phoenix, AZ 85034

NemcoFoodEquip.com



Printed 10/18. Printed in the U.S.A.