

## BETTER KETTLES BY DESIGN

### Offering Superior Engineering

“Advanced Control Design” offers unmatched performance and reliability (compared to competitors that offer outdated technology and less expensive components).



Easy to view “Color Coded Pressure Vacuum Gauge” with Green and Vent Air zones easily identifies optimum performance.



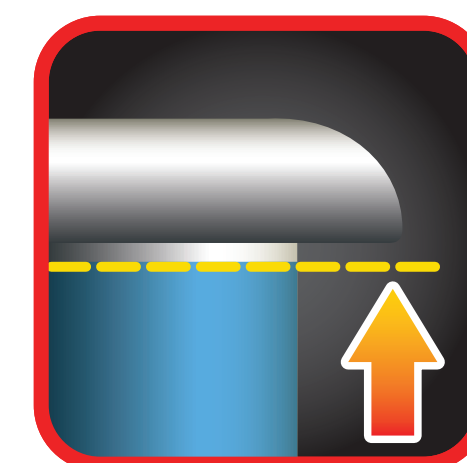
#### All Splash-Proof Hose Proof Controls

Offers greater resistant to damage caused by splashing water and cleaning.



#### Higher Pressure, Higher Performance

50 PSI steam jacket rating lets you cook faster at higher temperatures than most other kettles.

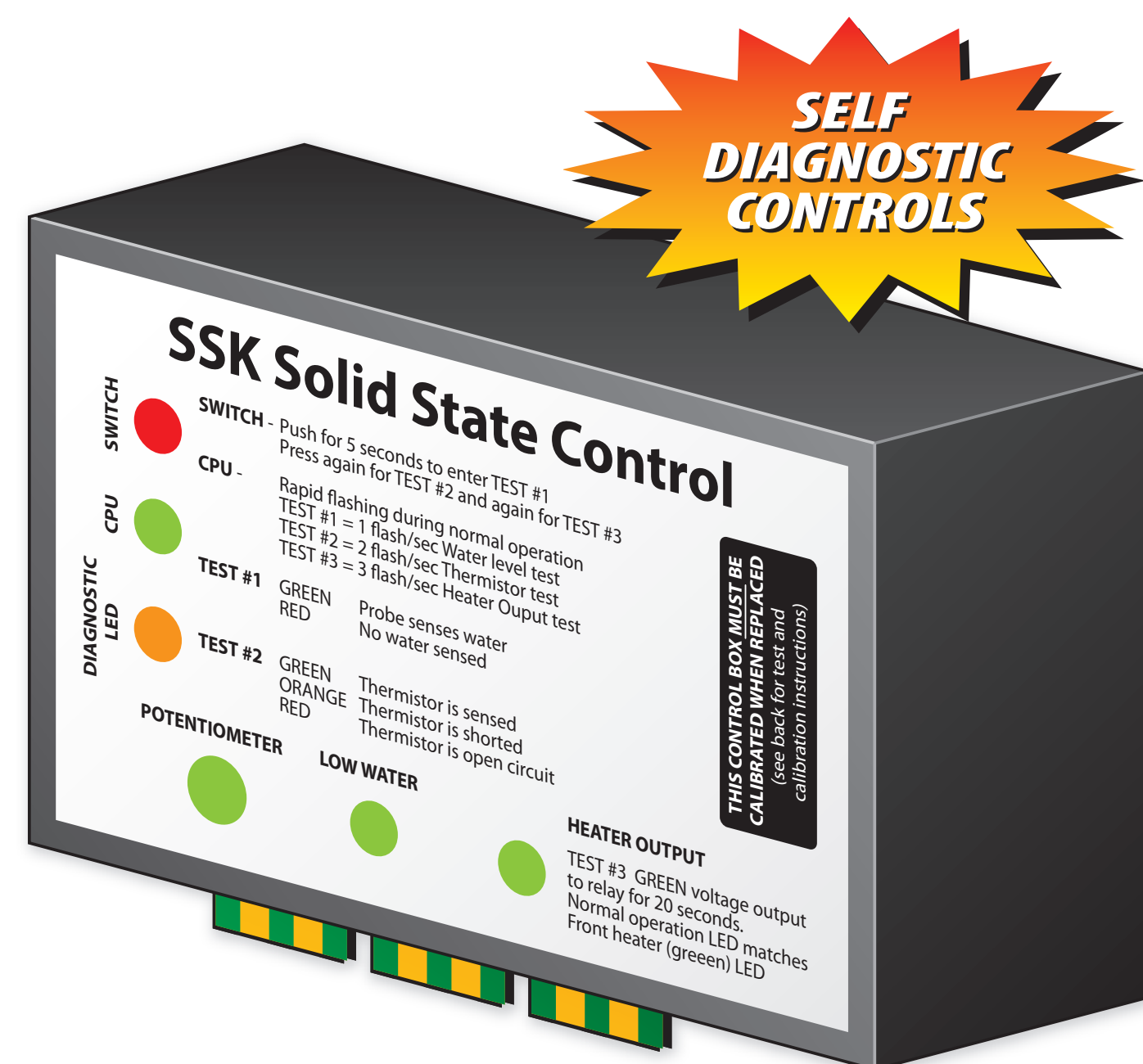


#### Actual Kettle Size Capacity

Unlike others who figure capacity to the rim, our kettles hold the capacity stated. This is true on all our models.

#### Exclusive Self Diagnostic Controls Standard:

- ✓ Continuously monitors international functions of the kettle.
- ✓ Prevents downtime due to component failures.
- ✓ Increases safety factor by continuously monitoring components.



#### Flush Mounted LED Control Lights

for Heat-On Indicator and Low Water Indicator.

- ✓ Resists damage from use and abuse.
- ✓ Easier to clean no switches and lights sticking out.
- ✓ Fewer components and switches to fail.
- ✓ Protective Control Brackets standard on table top models, eliminates damage to control panel due to use and abuse.



#### Reinforced Rolled Rim

Adds extra strength and makes each kettle dent and damage resistant. Eliminates the need for a separate reinforcing bar.



**Solid State Temperature Control** offers greater accuracy in maintaining delicate temperatures for simmering (+/- 5°F) compared to less expensive mechanical thermostats.



#### High Performance Gas-Fired Heating System

Exclusive design cooks 2 - 3 times faster than competitive models. (gas models only).

