



MenuConnect<sup>®</sup>

Merrychef eikon<sup>®</sup> range

# Introduction

MenuConnect® is an innovative system providing the eikon® oven range with remote control for oven setup, menu management and ethernet updates via a standard USB memory stick.

## Main features include:

- Familiar easy to use interface
- Multi-language display
- Preset oven temperatures
- Organise and manage cooking program and groups
- Program ovens uniformly or individually
- Oven software updates
- Upload oven recipes

## System requirements:

- Microsoft Windows XP, Vista
- Internet connection
- 8MB hard disc space.

NOTE: the words 'double click' and 'click' mentioned in this guide refers to using the left mouse button, unless stated otherwise.







The displays, layout and icons shown herein, are for guidance purposes only and are not intended to be an exact representation of those supplied with the software.

MenuConnect® is a registered trademark of Welbilt.

All other company names and product names mentioned herein are trademarks or registered trademarks of their respective owners.

No liability is accepted arising from the misuse of MenuConnect® software including the access, use and storage of any material or image which can be regarded as offensive or illegal.

# Contents

<b>INTRODUCTION</b> _____	2	 <b>MENU MANAGEMENT</b>	
System requirements _____	2	Recipe programs _____	11
 <b>INSTALLATION</b>		Add a program group _____	12
Installing MenuConnect® _____	4	Add recipe programs to a group _____	13
 <b>START MenuConnect</b>		PRESS & GO _____	13
Start MenuConnect® _____	5	Managing languages _____	14
 <b>OVEN SETTINGS</b>		Adding languages _____	14
Oven control settings _____	6	Removing languages _____	15
Oven mode/navigation settings _____	7	Managing icons _____	16
Language options _____	7	Using the icon camera tab _____	16
Oven temperature settings and labels _____	7	Using the icon library _____	17
Sound levels _____	8	 <b>USB</b>	
Oven timer _____	8	Using a USB memory stick _____	19
Temperature band _____	9	Formatting _____	19
Change password _____	9	Using MenuConnect® files _____	19
Screen saver _____	10	 <b>READY RECIPES</b>	
		Using MenuConnect® with Ready Recipes _____	20

# Installing MenuConnect®

1. Double click on the Windows\* Installer Package to launch the Setup Wizard. Click the **Next** button to start the Setup Wizard.
2. To change the default folder where the program is stored, click the **Browse** button and select or create a new folder. Click on a radio button (circled) to choose if access to the program is allowed for everyone using the computer or if it is restricted to one user. Click the **Next** button to continue.
3. Click the **Next** button to start installing the program.
4. The next screen shows the installation progress.
5. When the program has successfully installed, click the **Close** button to close the installer.

**i** Use the operating system 'add or remove programs' and remove the program before attempting to reinstall the software.



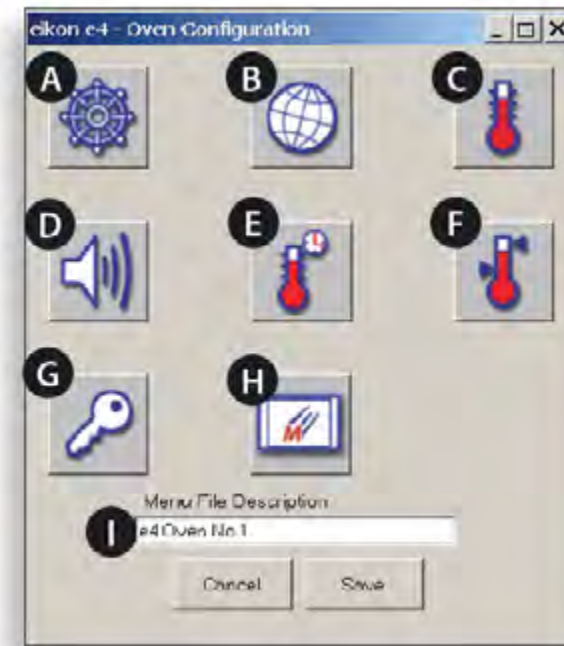
# START MenuConnect®

1. Double click the '**MenuConnect**' shortcut icon on the desktop to start the program.
2. Click '**Merrychef MenuConnect**'.
3. To change the display language, click '**Select Language**' from the '**View menu**', click the preferred language, then click '**Select**'.
4. Select '**File**' from the menu bar and click '**New**'.
5. Click on the required oven model, then click the '**Select**' button.



## Oven control settings

- A. Oven mode/navigation settings.
- B. Language options.
- C. Oven temperature settings & labels.
- D. Sound levels.
- E. Oven timer.
- F. Temperature band.
- G. Change password.
- H. Screen saver.
- I. Oven configuration Filename.



Click an oven control icon (A-H) to select and change the settings.  
Click on the back arrow to return to the main screen.

If required, change the Manager/Service passwords and click **'Save'**.

Once all the changes have been made enter a description (I) for the oven configuration, for example: 'e4 Oven No1'.

Click **'Save'** and the screen opposite displays.



**i** After the oven configuration has been saved the settings menu can be accessed from the 'Settings' button (circled) to modify individual settings.



## Oven mode/navigation settings

Select the oven mode/navigation symbol (A) from the 'Settings' menu.

Select '**Quick Serve Mode**' for cooking only, or '**Full Serve Mode**' for cooking & development programs.

Select '**Enable Settings**' to display an '**unlock**' symbol on the oven Quick Serve Cookbook screen to allow access to the '**Settings**' menu of the oven.

Click the return arrow to return to the settings menu.

## Language options

Select the language symbol (B).

Select the checkbox next to each language required up to a maximum of 4.

When more than one language is selected click a radio button next to the preferred language to set the '**Current Display Language**'.

## Oven temperature settings and labels

Select the temperature symbol (C) to set the oven preheat temperature. Deselect the '**disabled**' checkbox and enter the required preheat temperature.

Click in the box below to enter a descriptive label.

To display °F instead of °C select the '**Show Temperature in °F**' checkbox.





## Sound levels

Select symbol (D) to set the sound controls.

Repeatedly click the speaker symbol to adjust the speaker volume in 5% increments until suitable for the environment from none (0%) to the loudest (100%).

Click the musical note symbol for a low, medium or high pitched sound.

Click the hand/button symbol to switch the oven's touchscreen sound ON (checkbox ticked) or OFF.

## Oven Timer

Select symbol (E) to set the oven preheat timers.

Select the **'Timer Enabled'** checkbox to activate the oven timer.

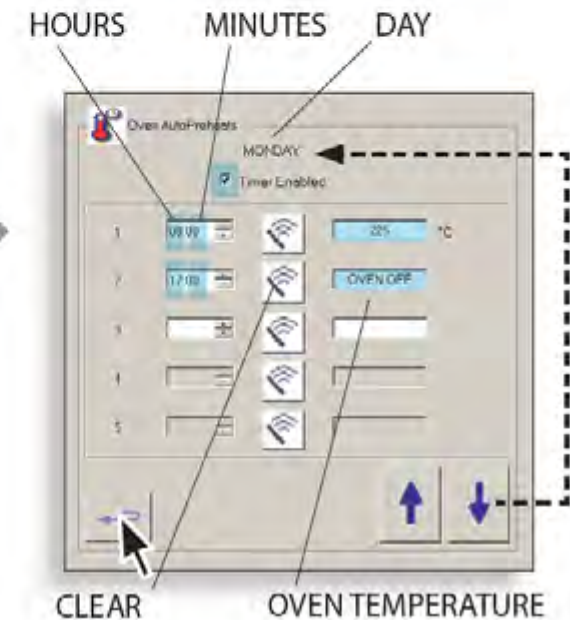
Select a weekday using the up/down arrows (bottom right).

Set the time to start the timer using the hours and minutes on the 24 hour timer.

Enter the oven temperature required to start at the set time or select **'OVEN OFF'**, click **'OK'**.

To clear a timer, click the button next to the timer required.

Cycle through the weekdays to set up to 5 timers for each day before selecting the return arrow.



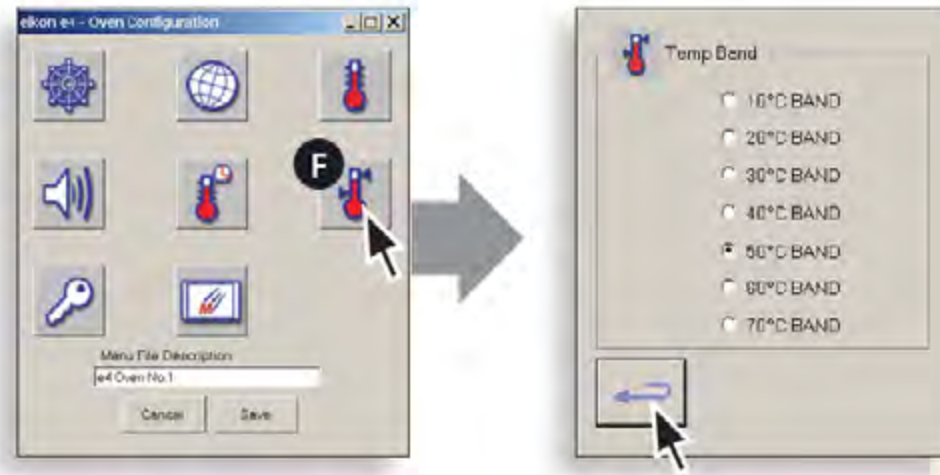




## Temperature Band

Select the **Temp Band** symbol (F) at which the oven controls i.e.  $\pm 10^{\circ}\text{C}$ .

Select the required temperature radio button.  
Note; although the lowest practical Temp Band should be used, if the set oven temperature falls by more than the selected Temp Band, the ready to cook mode and Temp Band are deactivated until the oven reaches the preheat temperature.



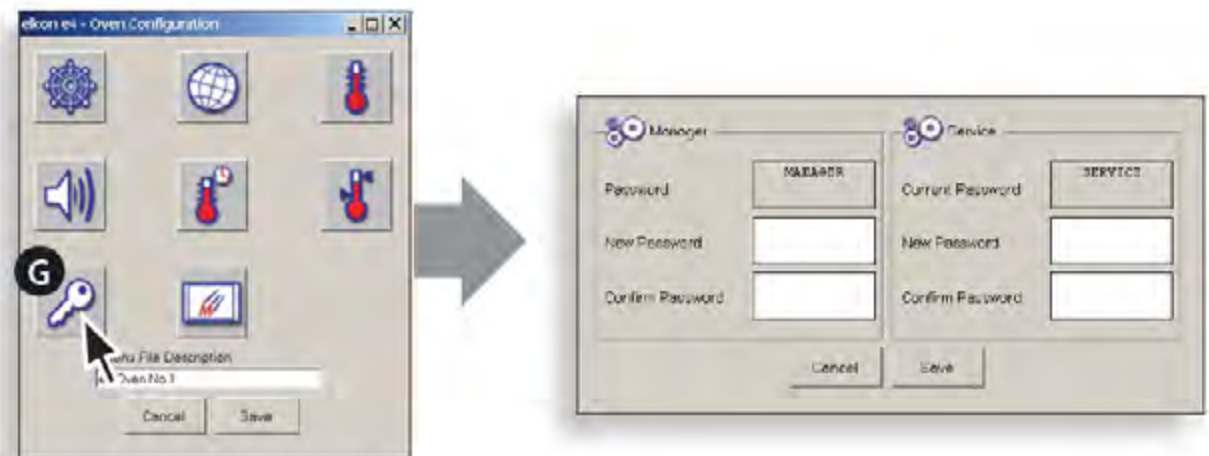
## Change Password

Select the key symbol (G) to change the oven passwords.

Select **'New Password'** under **'Manager'** to enter a new password to access the oven settings and select **'New Password'** under **'Service'** to enter a new password to access the oven service settings.

Select **'Confirm Password'** and re-enter the new password to confirm.

Click **'Save'** to keep the new password/s or **'Cancel'** to return to the original password/s.





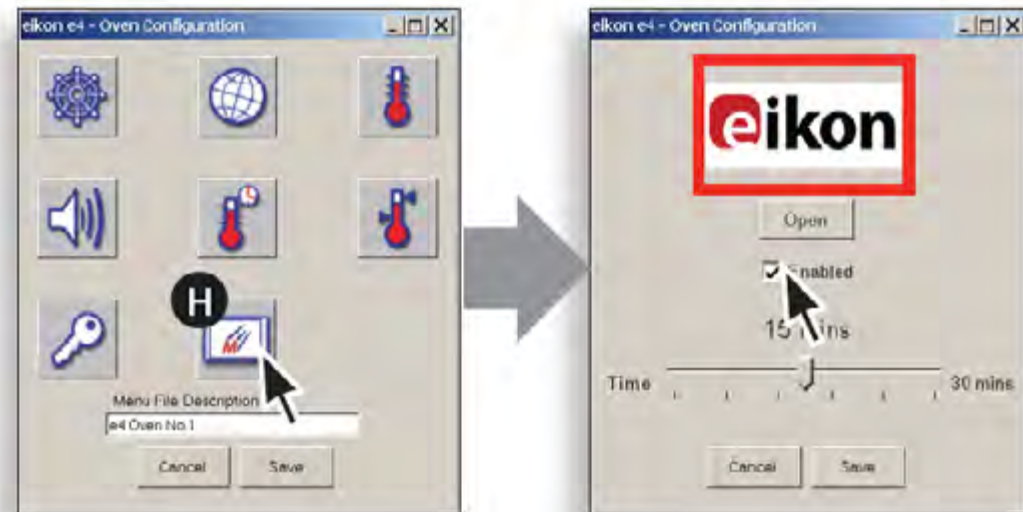
## Screen saver

Select the **'Screen saver'** symbol (H) and check the **'Enabled'** checkbox to activate.

Use the slider control to increase/decrease the delay time before the screen saver is displayed, maximum 30 minutes.

To change the screen saver image, click the **'Open'** button and select an image file to use.

Click the **'Save'** button to keep the changes or **'Cancel'** to discard.



*The image will be resized to fit the image area (outlined in red) and should be kept as small as possible to reduce unnecessary memory usage.*

*An active screen saver masks the oven touchscreen (opposite) with the selected image in motion.*

*The screen saver deactivates when the oven screen is touched and reactivates, if not touched, within the set delay time.*



Installation



START  
MenuConnect



Oven settings



Menu  
management



USB



Ready Recipes

# Recipe programs

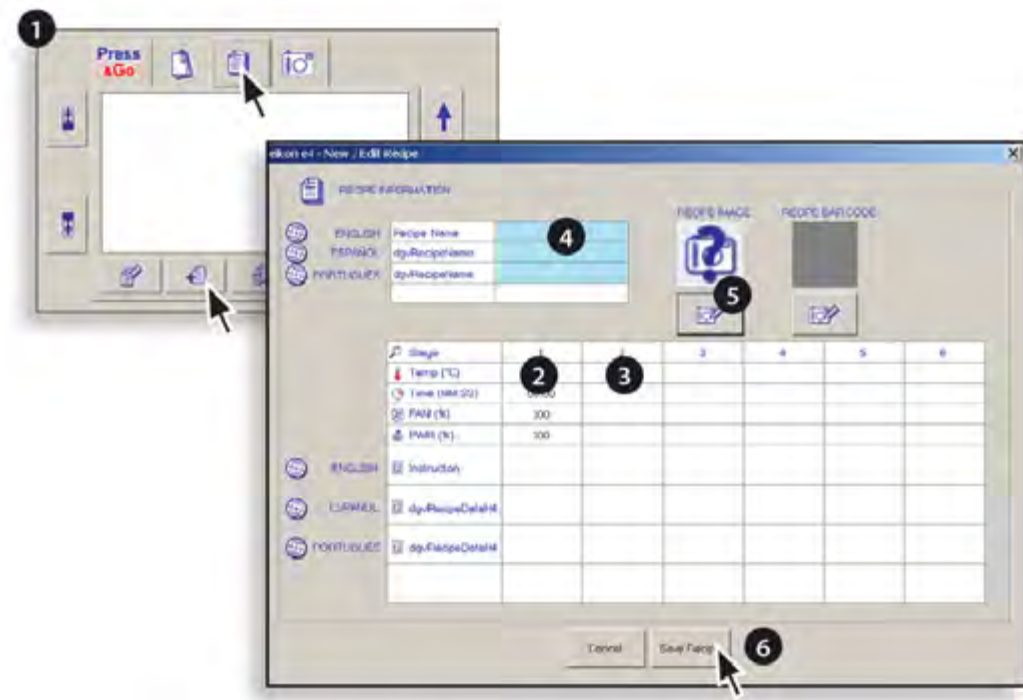
1. Click the all menus symbol (top of screen) to bring the tab to the front and make it active. Then click the add a new menu symbol (bottom left).
2. Click the default settings under the stage 1 to enter the recipe settings.
3. Click below the stage 2 to enter another stage, if required. Continue to add stages as required up to a maximum of 6 stages.
4. Click and enter a recipe name for the cooking program. Note, a name must be entered for each language before the recipe can be saved.
5. Click the camera symbol to add an icon to identify the recipe, if required.

*Note: There are limited icons available when the program runs for the first time, see 'Managing Icons'.*

6. When finished, click **Save recipe**.

**i** To edit or remove, select the Icon required, click the edit or remove button and click **'yes'** in the pop-up box to confirm removal or **'no'** to cancel removal.

Click the print button to print out a hardcopy.



## Add a program group

1. Click the program group symbol (top of screen) to bring the tab to the front and make it active. Then click the add a new program group symbol (circled).
2. Click and enter a category name for the group, click OK. Note, a name must be entered for each language before the program group can be saved.
3. Click the camera symbol, to add an icon to identify the recipe, if required.

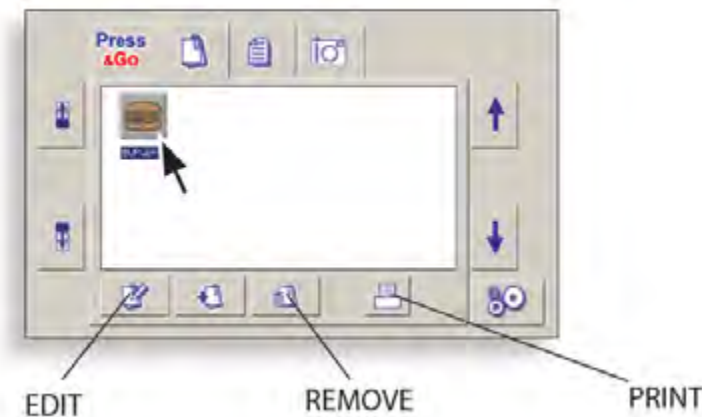
*Note: There are limited icons available when the program runs for the first time, see 'Managing Icons'.*

4. Click **'Save category'** to create a new group.



**i** To edit or remove, select the Icon required, click the edit or remove button and click 'yes' in the pop-up box to confirm removal or 'no' to cancel removal.

Click the print button to print out a hardcopy.



## Add recipe programs to a group

1. Click the program group symbol (top of screen) to bring the tab to the front and make it active.
2. Double click the required program group Icon.
3. Click the required recipe program to select, then click the green arrow (circled) to add the recipe program to the program group. Repeat the process to add the required programs to the group. (To remove a program from the group click the program to select and click the red arrow.)
4. When finished, click the return arrow.



## Press & Go

1. Click the Press & Go tab.
2. Double click the edit symbol.
3. Click the required recipe program to select, then click the green arrow (circled) to add the recipe program to the Press & Go menu. Repeat the process to add the required programs to Press & Go. (To remove a program from the Press & Go menu, click the program to select and click the red arrow.)
4. When finished, click the return arrow.



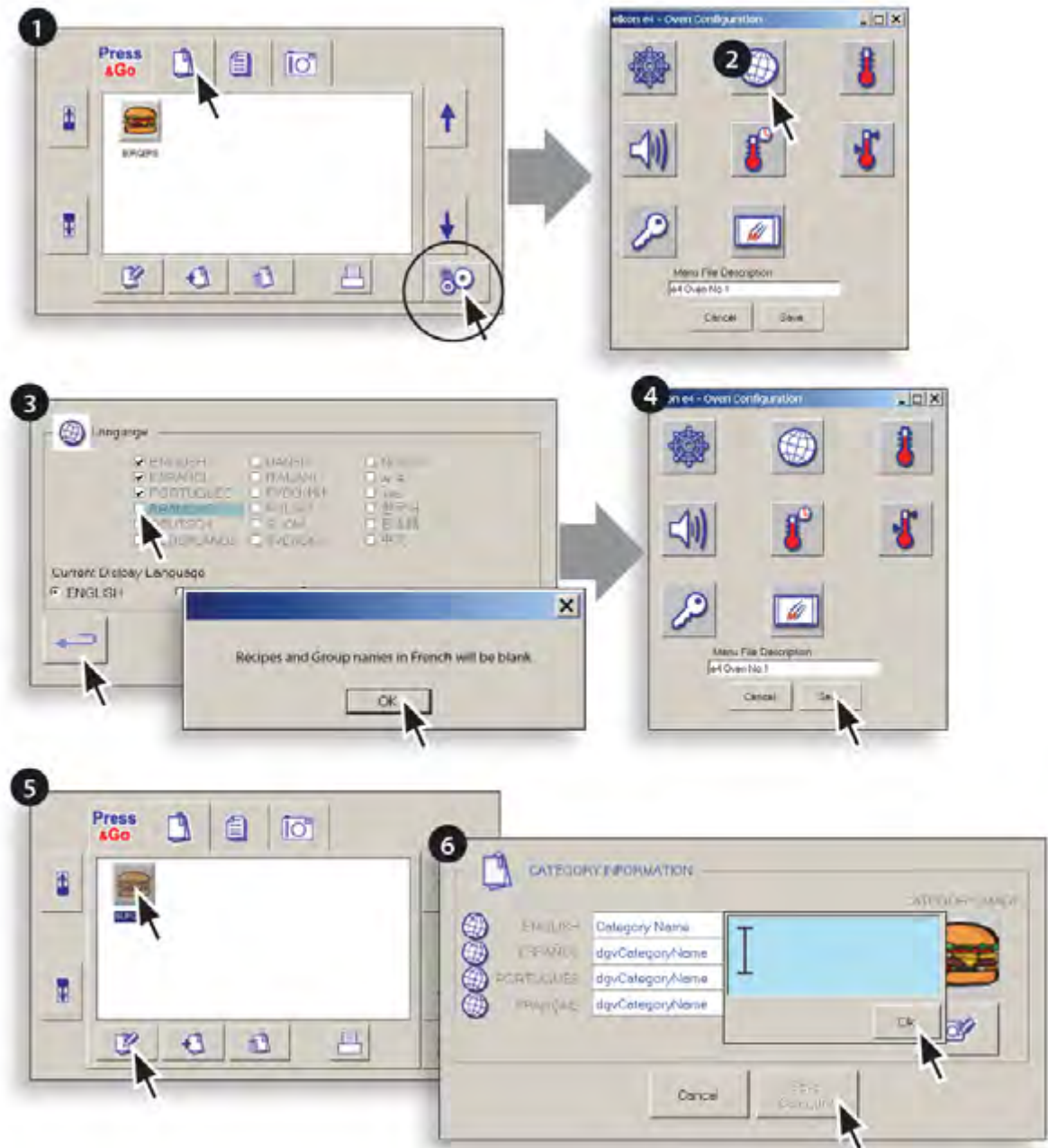
# Managing languages

For the oven to operate using different languages, follow the process for either adding or removing languages.

Note: if only one language is selected, the oven will only operate in the selected language.

## Adding languages

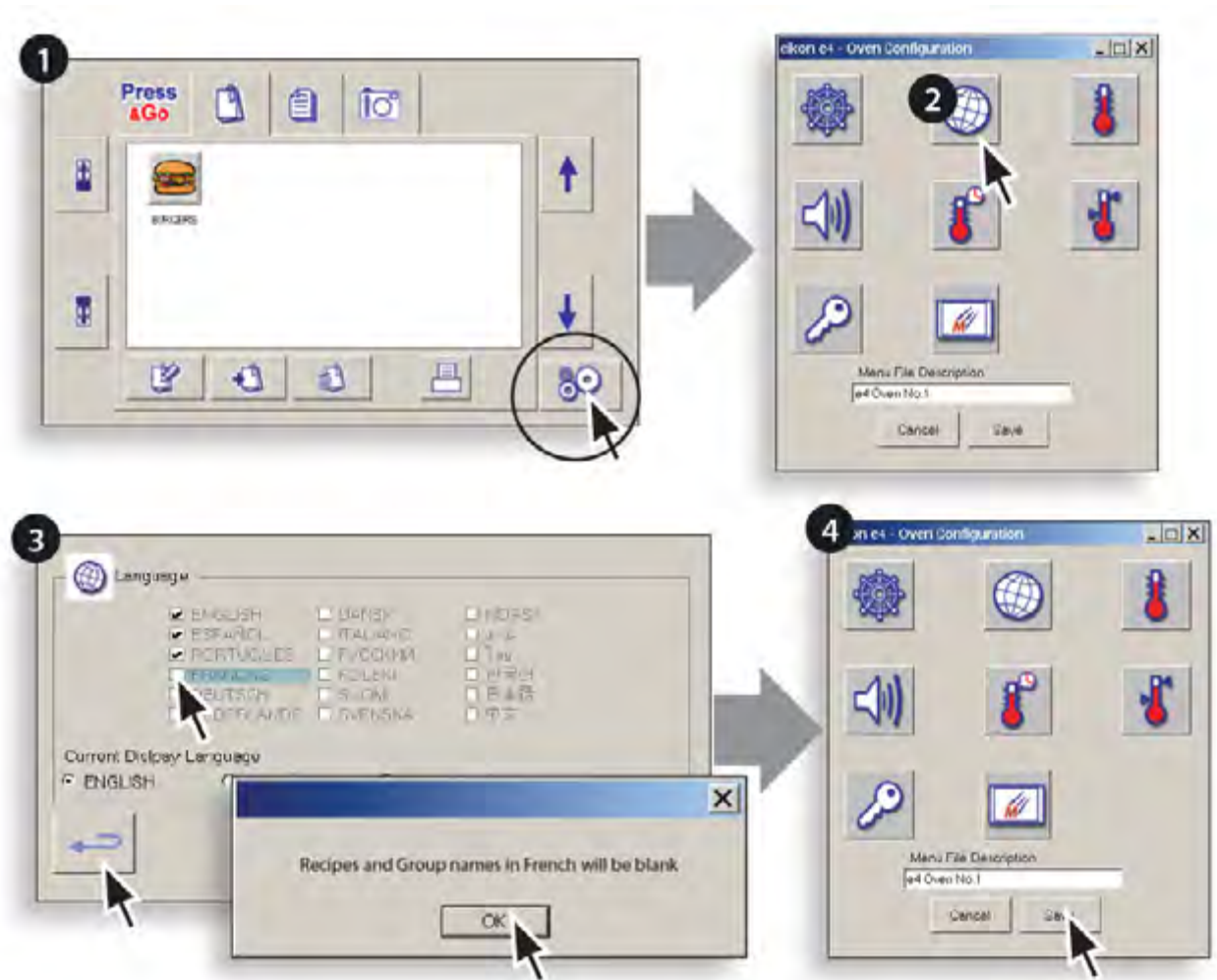
1. Click on the Program Group tab, then click the oven settings button.
2. Click the Languages icon.
3. Click a checkbox next to the language required (a popup box informs that the language name will be blank for the Recipes and Group names) click **OK**. Repeat this process for each language required, when finished click the return button to go back to the settings menu.
4. Click the **Save** button on the settings menu to update the oven configuration and return to the Program Group tab.
5. Select a category icon and click the edit button.
6. Click in the empty box next to each additional language to enter a category name and click OK. After all the names have been added, click the **Save category** button.





## Removing languages

1. Click the oven settings symbol.
2. Click the Languages icon.
3. Click a checkbox next to the language to be removed (a pop-up box informs that the language Recipes and Group names will not be retrievable) click **OK** to confirm removal. Repeat this process for each language to be removed, when finished click the return button to go back to the settings menu.
4. Click the **Save** button on the settings menu to update the oven configuration.



## Managing icons

Images for new icons can be imported from available computer image files.

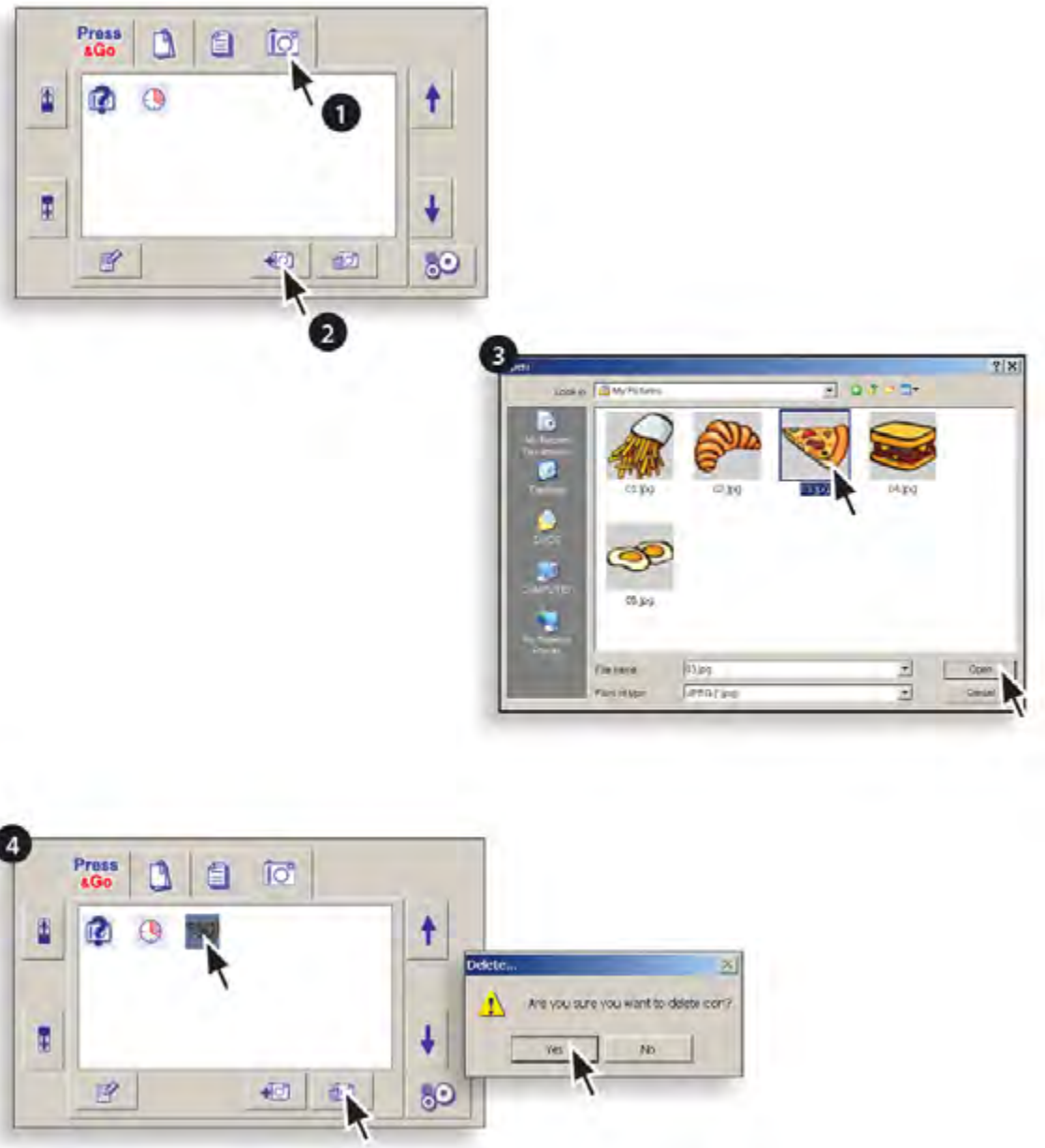
The images can either be imported every time an icon is required or stored and managed using the MenuConnect® icon library.

- i** *Oversized images will consume unnecessary memory and could result in an 'out of memory' error message.*
- The optimum size for an image is 64x64 pixels (approx. 20x20mm at 72 dpi).*

### Using the icon camera tab

1. Select the camera symbol tab.
2. Select the add image symbol to open the computer files.
3. Navigate to the folder where you images are stored, click on the required image and click **'Open'** to add the image.
4. To remove an icon, click the icon, click the image remove symbol and click **'yes'** to confirm removal.

*Note: if error message **'Icon is used'** is displayed, click **'OK'**. Locate and change the icon being used for another before removing.*

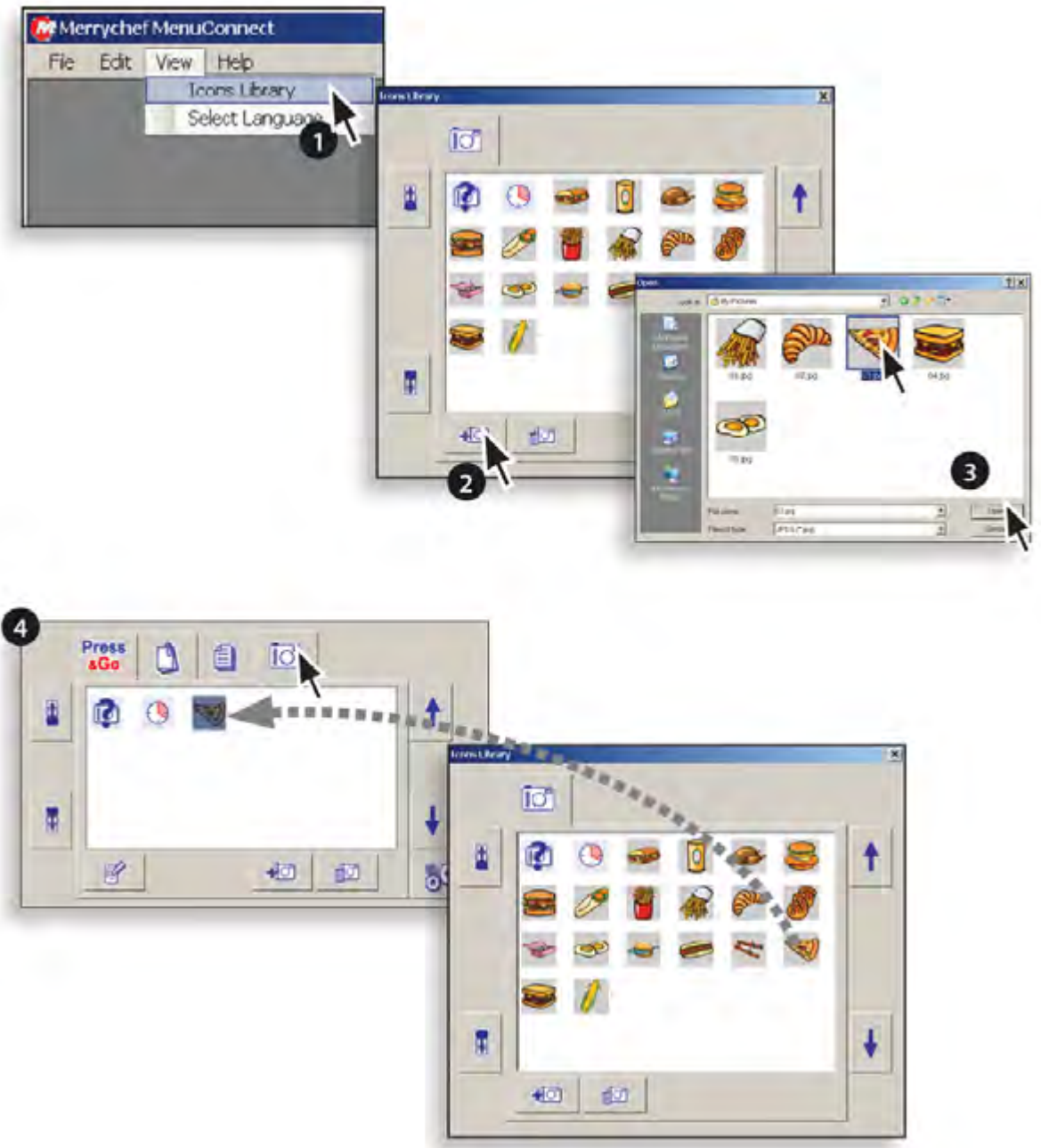






## Using the icon library

1. Select and click '**Icons Library**' from the main **View** menu.
2. To add an Icon, select the add image symbol to open the computer files.
3. Navigate to the folder where the images are stored, click on the required image and click '**Open**' to add the image to the Icon Library.
4. Select the camera symbol tab and drag and drop the required icons from the library window onto the camera screen.



Installation



START  
MenuConnect



Oven settings



Menu  
management



USB

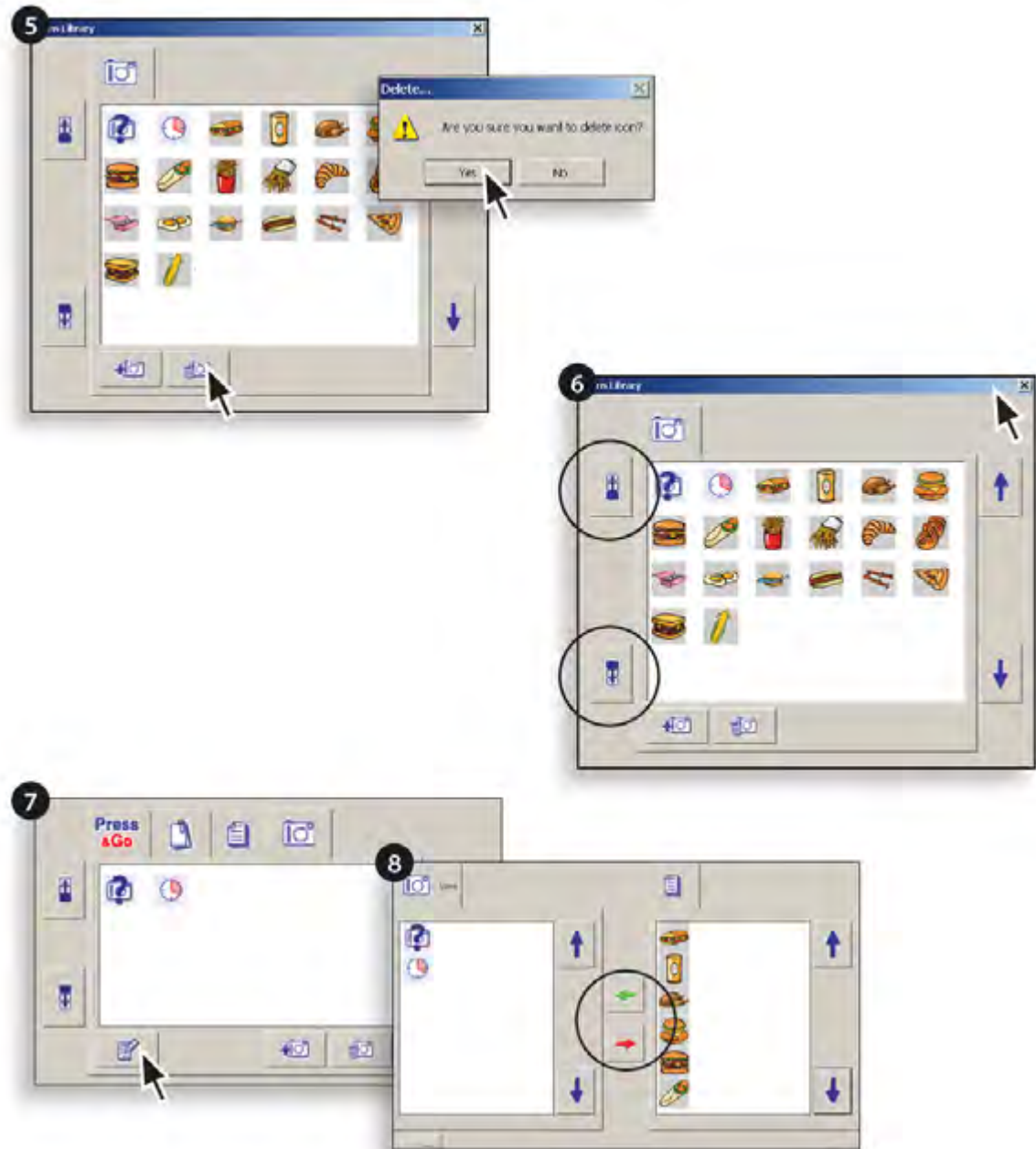


Ready Recipes



## Using the icon library continued

5. To remove an icon, click the icon, click the image remove symbol and click **'yes'** to confirm removal.
6. To change the order of the Icons, select an Icon and click the forwards or backwards buttons (circled). When finished, click the 'X' to close the library window.
7. To edit the active icon list, select the camera symbol tab and click the **'edit'** symbol to open the icon lists.
8. To enable an Icon, select an icon and click the green arrow to add it to the active icon list. To remove an icon from the active list, select the icon and click the red arrow. This only removes it from the active list and not the library.



## Using a USB memory stick



### Warning

Formatting the USB will erase all data.

The USB memory stick must be 4Gb or less and formatted before saving any files to the memory stick.

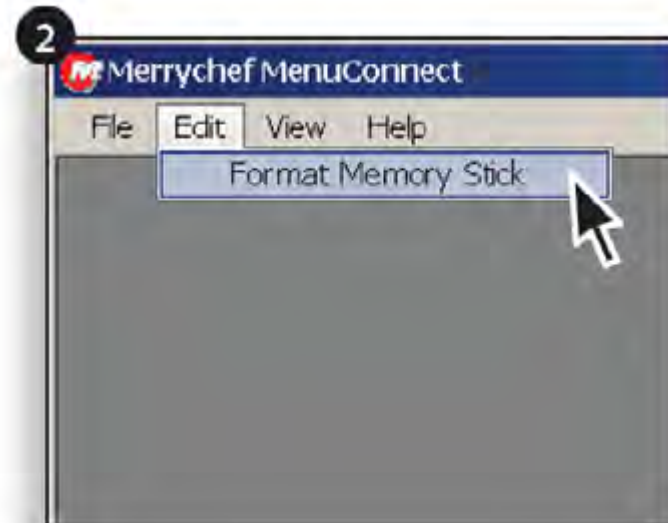
### Formatting

1. Insert the USB memory stick into the computer.
2. Select 'Format USB' from the **Edit** menu and observe the on screen instructions.

### Using MenuConnect® files

Locate the files (**i.e. myfilename.CBR**) and copy to the root directory of the USB memory stick, do not use folders.

*To enable the oven to automatically download the files, copy the auto update file (**autoupd.CBR**) to the root directory of the USB memory stick.*



# Using MenuConnect® with Ready Recipes



## Important

New menus added to the oven via a USB stick always override and replace the existing menus. If you have existing menus on your Merrychef oven that you want to keep, first download them onto a USB and transfer them into the Menuconnect software, add in your new recipes and transfer all of the recipes back to your Merrychef oven.

## Downloading existing recipes from your oven:

1. Select settings.
2. Enter your password.
3. Select the USB icon.
4. Select **'Upload to USB'**.
5. Insert a USB memory stick (to format see page 19).
6. Select **'Menu to USB'**.
7. Select the **'Green tick'** when transfer is complete and upload the cbr.file to your computer.

## Upload existing recipes into MenuConnect®:

(To install and open MenuConnect® software, see pages 4 & 5)

8. Select **'File'** from the menu bar and click **'Open'**. Select the cbr.file.
9. When the window opens, select the **'All Menus'** icon and the oven menus will appear.

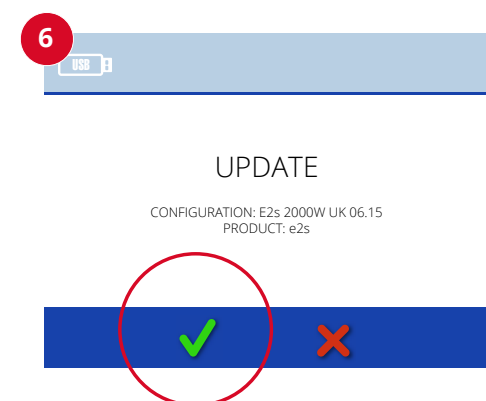
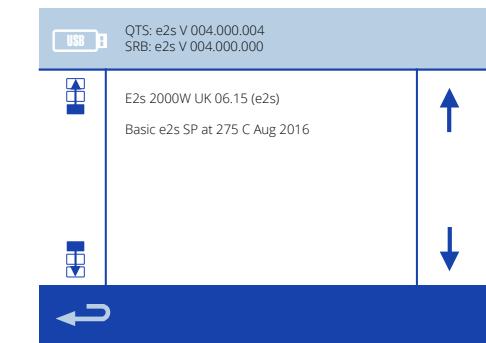
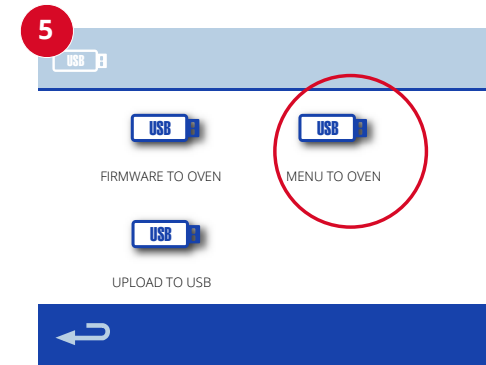
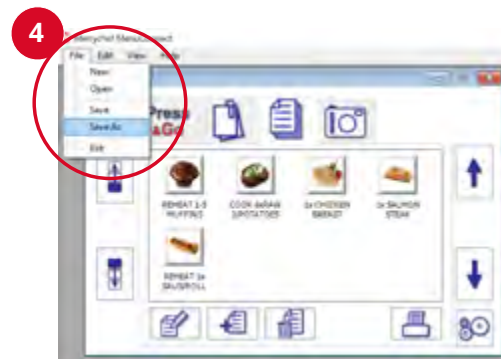
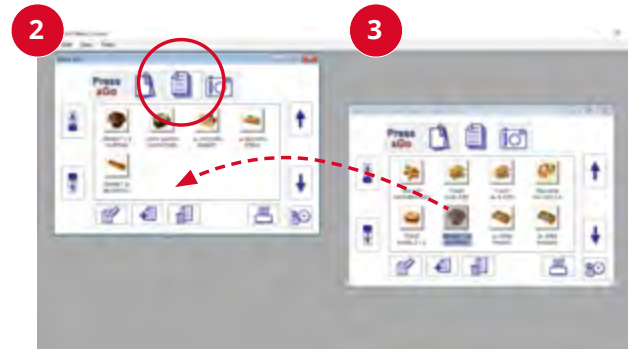


# Using MenuConnect® with Ready Recipes

## Adding your Ready Recipes files to your MenuConnect® software

(Download your cookbook from Ready Recipes onto your PC)

1. Open a new window in MenuConnect®. Select **'File'** from the menu bar and click **'Open'**. Select the Ready Recipes file.
2. Select the **'All Menus'** icon and the recipes will appear.
3. Drag and drop recipes to create one menu file.
4. Select **'File'** then **'Save As'**, create a new file for the oven and upload this to a USB memory stick.
5. Reinsert the USB memory stick in the oven, select **'Menu to oven'** and download the file.
6. Select the **'Green tick'** to confirm the update.



Merrychef reserves the right to change product specifications without notice and accepts no liability for any inaccuracies, errors or omissions contained herein.



# MenuConnect<sup>®</sup>

For further details on where to buy, how to service and for our flagship culinary support please visit [www.merrychef.com](http://www.merrychef.com)



Welbilt offers fully-integrated kitchen systems and our products are backed by KitchenCare<sup>®</sup> aftermarket parts and service. Welbilt's portfolio of award-winning brands includes **Cleveland<sup>™</sup>**, **Convotherm<sup>®</sup>**, **Crem<sup>®</sup>**, **Delfield<sup>®</sup>**, **fitkitchen<sup>SM</sup>**, **Frymaster<sup>®</sup>**, **Garland<sup>®</sup>**, **Kolpak<sup>®</sup>**, **Lincoln<sup>™</sup>**, **Manitowoc<sup>®</sup>**, **Merco<sup>®</sup>**, **Merrychef<sup>®</sup>** and **Multiplex<sup>®</sup>**.

*Bringing innovation to the table* • [welbilt.com](http://welbilt.com)