

# WARING COMMERCIAL

## TORq 2.0 Blender

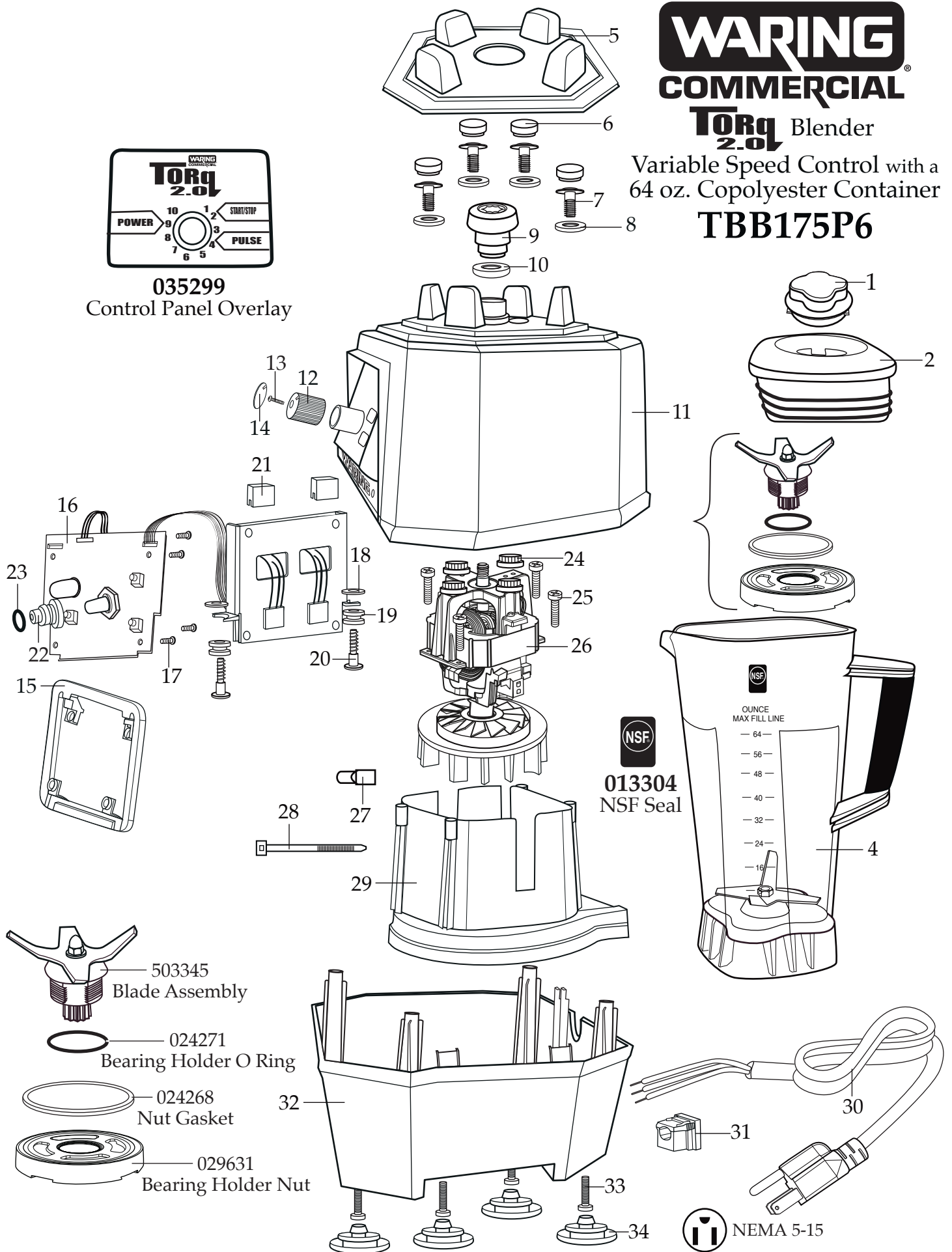
Variable Speed Control with a 64 oz. Copolyester Container

### TBB175P6

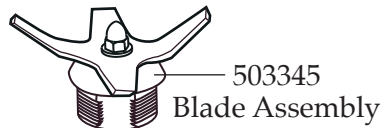


**035299**

Control Panel Overlay



**013304**  
NSF Seal





Illustration#	Part#	Description
1	026425-E	Eastman Jar Lid Cover
2	026424-V	Vinyl Jar Lid
3	031060	Blending Assembly Kit
4	026423-E 503347	64 oz. Container ONLY 64 oz. Container with Blending Assembly
5	035885	Jar Pad
6	035085	Hole Plug (4 required)
7	034275	Sems (4 required)
8	034273	B Gasket (4 required)
9	037034 035251	Drive Coupling (on units after 11/15/2019) Drive Coupling
10	037033	Coupling Washer (on units after 11/15/2019)
11	503460-175	Top Housing Assembly
12	036498	Speed Control Knob
13	026267	Screw
14	035757	Disk Control Knob Cover
15	035237	Control Housing Back Bezel
16	035342	Control Panel
17	035090	Screw (4 required)
18	013604	Washer (2 required)
19	034904	Rubber Grommet (2 required)
20	034902	Sems (2 required)
21	034900	PCB Cushion (2 required)
22	036499	Speed Control Knob Insert (on units after 4/14/2018)
23	018389	O Ring
24	034272	A Gasket (4 required)
25	034274	Screw (4 required)
26	034276	ECM Motor /KB500
27	012409	Small Crimp Connectors (5 required)
28	013731	Cable Ties (6 required)

Illustration#	Part#	Description
29	503483	Motor Housing with Dampeners
30	035124	Cordset
31	033619	Strain Relief
32	035079 503480	Bottom Housing Bottom Housing with Feet
33	034274	Screw (4 required)
34	035088	Foot (4 required)

