



RELIABILITY BUILT IN™



Installation and Maintenance Instructions

EasyInstall™

PRE-RINSE UNIT B-0113 Series (B-0113-B, Pre-Rinse Unit w/ Wall Bracket)

Limited Three Year Warranty
(Commercial Applications)

T&S warrants to the original purchaser (other than for purposes of resale) that such product is free from defects in material and workmanship for a period of three (3) years from the date of purchase. During this three-year warranty period, if the product is found to be defective, T&S shall, at its option, repair and/or replace it. To obtain warranty service, products must be returned to.....

T&S Brass and Bronze Works, Inc.
Attn: Warranty Repair Department
2 Saddleback Cove
Travelers Rest, SC 29690

Shipping, freight, insurance, and other transportation charges of the product to T&S and the return of repaired or replaced product to the purchaser are the responsibility of the purchaser. Repair and/or replacement shall be made within a reasonable time after receipt by T&S of the returned product. This warranty does not cover items which have received secondary finishing or have been altered or modified after purchase, or for defects caused by physical abuse to or misuse of the product, or shipment of the products.

Any express warranty not provided herein, and any remedy for Breach of Contract which might arise, is hereby excluded and disclaimed. Any implied warranties of merchantability or fitness for a particular purpose are limited to three years in duration. Under no circumstance shall T&S be liable for loss of use or any special consequential cost, expenses or damages.

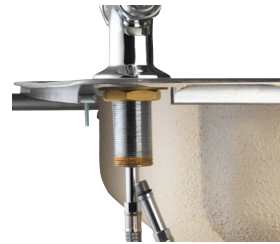
Some states do not allow limitations on how long an implied warranty lasts or the exclusion or limitation of incidental or consequential damages, so the above limitations or exclusions may not apply to you. Specific rights under this warranty and other rights vary from state to state.



Attention California Residents:
WARNING This product can expose you to chemicals including Lead, Chromium (hexavalent compounds) and Phthalates (DEHP) which are known to the State of California to cause cancer and birth defects or other reproductive harm.

For more information go to
www.P65Warnings.ca.gov.

P/N: 098-014494-45 Rev.7
DATE: 06-05-19
DRAWN: TED
CHECKED: JRM 06-28-19
APPROVED: JHB 07-19-19



Step 1:
Insert flex line inlets and tighten by hand. Apply plumber's putty to underside of body and insert into mounting hole. With wrench, tighten the locking nut.



Step 2:
Apply plumber's tape to top of riser threads and attach to spring assembly. Tighten with wrench.



Step 3:
Make sure that the EasyInstall® locking washer is seated properly inside the faucet body.



Step 4:
Grab riser assembly and lower the EasyInstall® end-fitting into faucet body. Press down until the end-fitting "pops" in.



Step 5:
Lock the EasyInstall® locking nut in place. Tighten with wrench.

Base Faucet Assemblies

| | | |
|----|-----------------------------------------------------|--------------|
| 1 | Faucet Body Assembly w/ Eterna Cartridges | B-0200-LN |
| | Faucet Body Assembly w/ Cerama Cartridges | B-0200-CR-LN |
| 2 | Asm, Quarter-Turn Eterna Cartridge, RTC (new style) | 002712-40NS |
| | Asm, Quarter-Turn Cerama Cartridge, RTC (new style) | 012446-25NS |
| 3 | Cartridge Only, Eterna w/ Spring Checks, RTC | 012443-40NS |
| | Cartridge Only, Cerama w/ Check Valves, RTC | 012394-25NS |
| 4 | Asm, Quarter-Turn Eterna Cartridge, LTC (new style) | 002711-40NS |
| | Asm, Quarter-Turn Cerama Cartridge, LTC (new style) | 012447-25NS |
| 5 | Cartridge Only, Eterna w/ Spring Checks, LTC | 012442-40NS |
| | Cartridge Only, Cerama w/ Check Valves, LTC | 012395-25NS |
| 6 | Handle, Lever | 001638-45NS |
| | Handle, Wrist Action | B-WH4-NS |
| 7 | Screw, Handle | 000925-45 |
| 8 | Index, Button - Hot (Red) | 001193-19NS |
| 9 | Index, Button - Cold (Blue) | 018506-19NS |
| 10 | Washer, Body | 002290-45 |
| 11 | Locknut, Shank | 000965-45 |
| 12 | Lock Washer, EasyInstall | 014200-45 |
| 13 | Flexible Connector Hoses | 012534-45 |

Riser Assembly

| | | |
|----|-------------------------------------------------------|-----------|
| 14 | Nipple, 3/8" x 24" | 000372-40 |
| 15 | Swivel Assembly, EasyInstall | EZ-K |
| 16 | Swivel Piece | N/A |
| 17 | O-Ring, Swivel Piece | 001065-45 |
| 18 | Asm, Finger Hook & Screw | 004R |
| 19 | Wall Bracket, 6" (add -B to model # for wall bracket) | B-0109-01 |

Pre-Rinse Unit Assembly

| | | |
|----|-------------------------------------|-----------|
| 20 | Spring Body | 000821-40 |
| 21 | Spring, Overhead | 000888-45 |
| 22 | Asm, Flexible Stainless Steel Hoses | B-0044-H |
| 23 | Asm, Spray Valve | B-0107 |

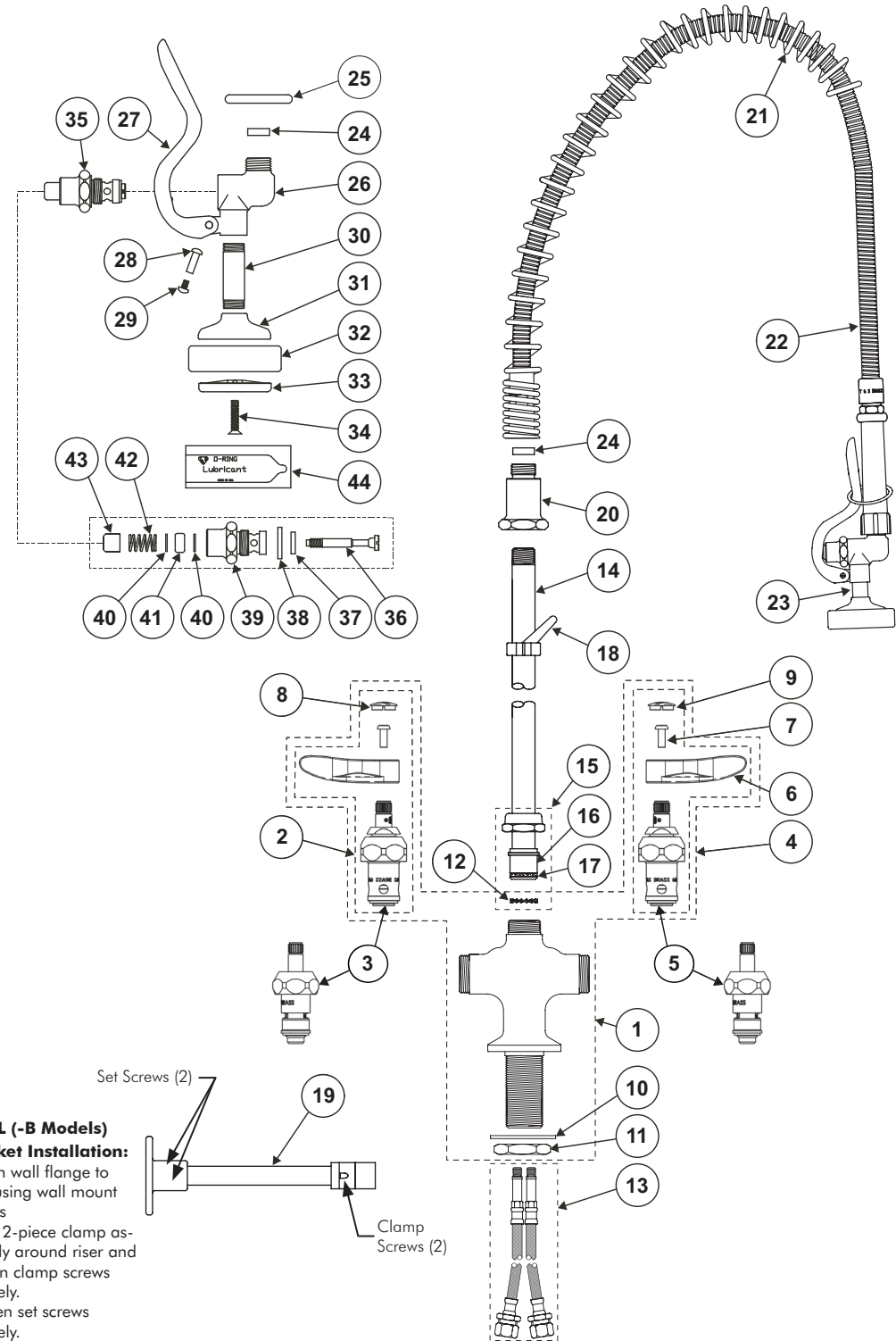
Spray Valve Assembly

| | | |
|----|-------------------------------|-----------|
| 24 | Washer, Hold Down Assembly | 010476-45 |
| 25 | Ring, Hold Down Assembly | 000907-45 |
| 26 | Body, Spray Valve (no handle) | 000065-40 |
| 27 | Handle | 001120-45 |
| 28 | Nut, Handle | 003198-45 |
| 29 | Screw, Handle | 003199-45 |
| 30 | Nipple | 000694-40 |
| 31 | Cup, Spray | 000019-40 |
| * | 32 Ring, Sprayhead | 007861-45 |
| * | 33 Sprayface | 001121-45 |
| * | 34 Screw, Sprayface | 000913-45 |

Bonnet Assembly

| | | |
|----|-----------------------------------|-----------|
| 35 | Asm, Bonnet | 002856-40 |
| * | 36 Stem | 001097-45 |
| * | 37 Washer, Seat | 012915-45 |
| * | 38 Washer, Bonnet Binding | 001040-45 |
| | 39 Bonnet | 000608-25 |
| * | 40 Washer, Bonnet Brass | 000974-45 |
| * | 41 Stem, Packing | 001100-45 |
| * | 42 Spring, Bonnet | 000895-45 |
| 43 | Push Button | 000753-25 |
| * | 44 Grease Pack (o-ring lubricant) | 012665-45 |

* Parts included in B-10K parts kit



OPTIONAL (-B Models) Wall Bracket Installation:

1. Fasten wall flange to wall using wall mount screws
2. Place 2-piece clamp assembly around riser and tighten clamp screws securely.
3. Tighten set screws securely.