



**John
BOOS**
Since 1887

ITEM #: _____ QTY: _____

MODEL #: _____

PROJECT NAME: _____

041221

3601 S. Banker St. Effingham, IL 62401 • Ph: (888) 431-2667 • Fax: (800) 433-2667

"UBPS" UNDERBAR POINT OF SALE CABINET



STANDARD FEATURES:

- ALL 18 GAUGE STAINLESS STEEL CONSTRUCTION
- TYPE 300 STAINLESS STEEL WITH #4 POLISH, SATIN FINISH
- STANDARD PRE-DRILLED HOLES ON SIDES FOR ATTACHING ADJACENT UNITS TOGETHER
- 2" DIAMETER RUBBER GROMMET FOR POWER CORD ACCESS
- LOCKING PERFORATED DOOR FOR IMPROVED VENTILATION
- 12" X 12" CUTOUT IN BACK FOR ELECTRICAL RECEPTACLES
- INCLUDES LEFT AND RIGHT SIDE SPLASHES



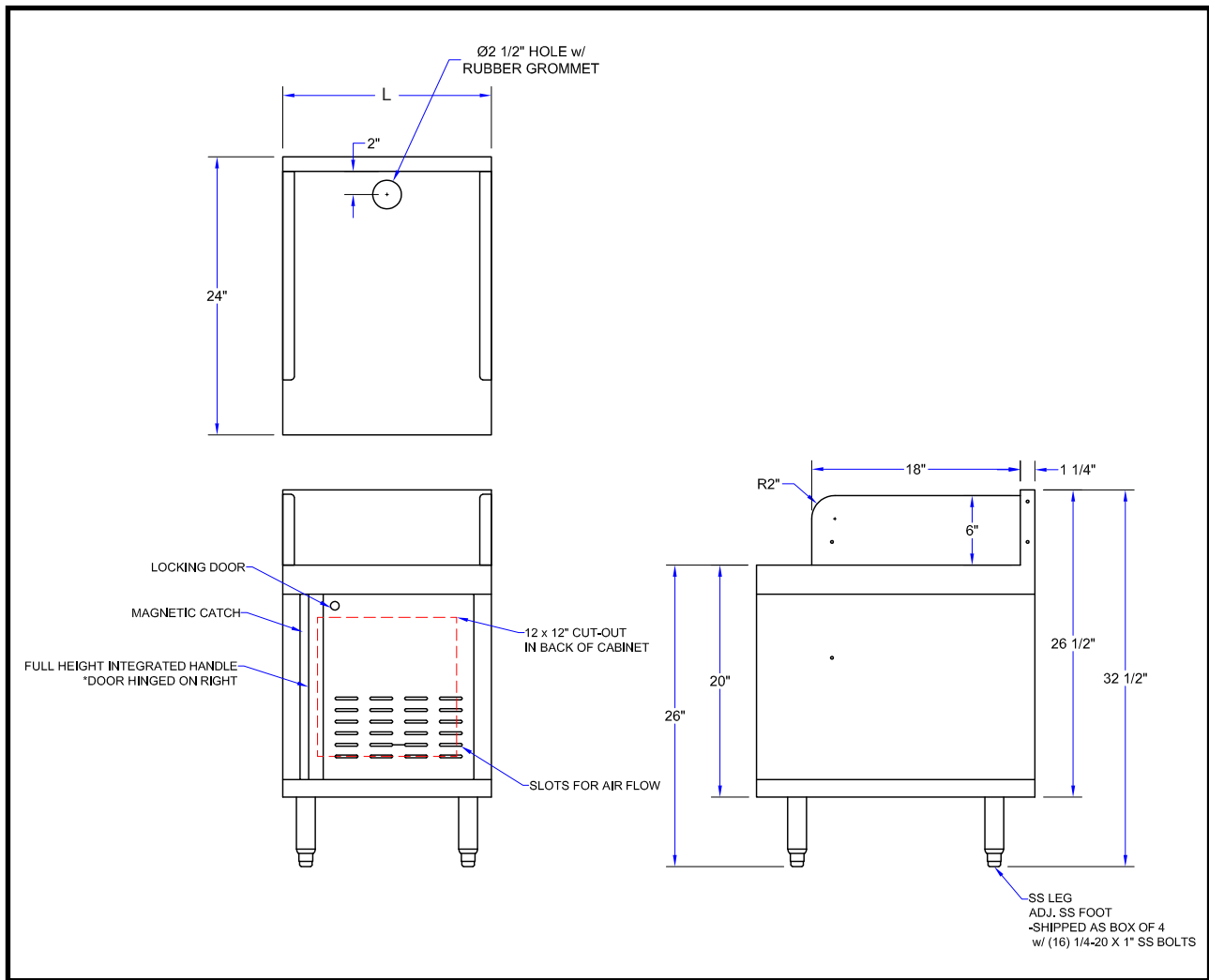
STANDARD FEATURES:

- MATERIALS
 - TOP: 18 GAUGE TYPE 300 STAINLESS STEEL
 - DOOR: 18 GAUGE TYPE 400 STAINLESS STEEL
 - BACKSPLASH: 18 GAUGE TYPE 300 STAINLESS STEEL
 - SIDES: 18 GAUGE TYPE 300 STAINLESS STEEL
- LEGS
 - BOLT ON 1-5/8" STAINLESS STEEL LEGS FOR FAST INSTALLATION
 - 1" ADJUSTABLE STAINLESS STEEL BULLET FEET
- MOUNTING OPTIONS
 - Z-CLIP TO MOUNT TO WALL
 - BOLT TO ADJACENT UNDERBAR PIECE
 - MOUNTING OPTIONS ALLOW FOR FLEXIBLE INSTALLATION OPTIONS TO REMOVE BACK OR FRONT AND BACK LEGS FOR A CLEAN INSTALLATION
- NSF CERTIFIED

POINT OF SALE CABINET

MODEL #	SIZE (LXWXH)	LENGTH (L)	WT. (LBS)
UBPS-2418-R	18"X24"X32-1/2"	18"	48
UBPS-2424-R	24"X24"X32-1/2"	24"	58

DETAILED SPECIFICATIONS



POINT OF SALE CABINET

MODEL #	SIZE (LXWXH)	LENGTH (L)	WT. (LBS)
UBPS-2418-R	18"X24"X32-1/2"	18"	48
UBPS-2424-R	24"X24"X32-1/2"	24"	58

SOME UNITS SHIP UNASSEMBLED FOR REDUCED SHIPPING COST. ALL DIMENSIONS ARE TYPICAL. TOLERANCE +/- .500"
 John Boos & Co. is constantly engaged in a program of improving products and therefore reserves the right to change specifications without prior notice.



3601 S. Banker St. • Effingham, IL 62401 • quotes@johnboos.com

041221

43



www.johnboos.com