

# Carriers on the Move!



- Lightweight and easy to maneuver.
- Efficiently transports Cam GoBox Top Loaders and Front Loaders.
- Accommodates other Cambro insulated carriers and storage containers.

**CAMBRO**  
TRUSTED FOR GENERATIONS™

[www.cambro.com](http://www.cambro.com)

# Camdolly® Compact



<b>CODE</b>	<b>CDC300</b>
<b>LIP DIMENSIONS</b>	1.3" (3,3 cm)
<b>EXTERIOR DIMENSION L x W x H</b>	24.9" x 17.4" x 7.3" (63,4 x 44,1 x 18,5 cm)
<b>INTERIOR DIMENSION L x W</b>	24.6" x 17.1" (62,5 x 43,4 cm)
<b>CAPACITY</b>	300 lbs. (136 kg)
<b>FITS</b>	UPC300, EPP400, EPP300, EPP180, EPP160, EPP140, EPP180LH, UPC140, UPC160, UPC180

Case Pack: 1 Color: Red (358).

CDC300 fits the following products.



UPC300



EPP140



EPP160



EPP300



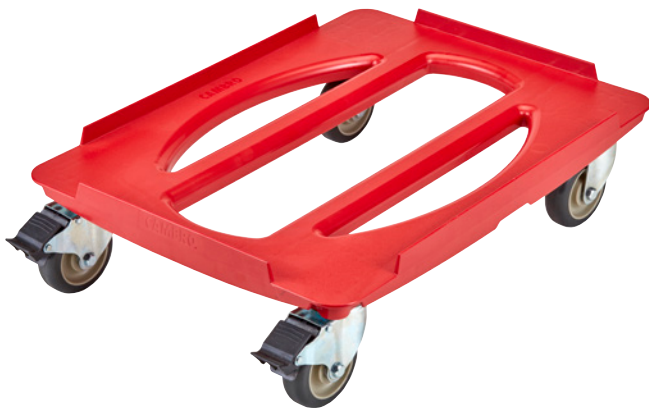
EPP180LH



EPP400



EPP180



<b>CODE</b>	<b>CDC400</b>
<b>LIP DIMENSIONS</b>	0.9" (2,2 cm)
<b>EXTERIOR DIMENSION L x W x H</b>	25.3" x 18.5" x 6.9" (64,3 x 47 x 18,5 cm)
<b>INTERIOR DIMENSION L x W</b>	24.9" x 18.5" (63,2 x 46,9 cm)
<b>CAPACITY</b>	300 lbs. (136 kg)
<b>FITS</b>	UPC400, EPP180XLT

Case Pack: 1 Color: Red (358).

CDC400 fits the following products.



UPC400



EPP180XLT

For more information about Cambro products visit [www.cambro.com](http://www.cambro.com) or contact your Distributor, Cambro Sales Representative or the Cambro Customer Service Department.