



verterra™

## 2021 Collection Guide

Innovative Eco-Friendly Plating & Packaging

# 2021 Collection Guide

VerTerra has been the go to eco-friendly line for leaders and innovators for over a decade. Our 2021 VerTerra collection guide showcases curated images from our clients creatively using VerTerra. We are excited to showcase our product range as well as, introduce new products for the year. Get inspired by images using VerTerra products in ways that look beautiful while saving costs through operational efficiencies and reduced labor.



## Contents

4-5

About Us

6-13

DFFL - Palm

6-9 The Process  
10 Plates  
11 Bowls  
12-13 Palm + Lids

14-15

Paper Board

14-15 Paper Board Boxes

16-29

Balsa Wood

16-19 Boxes  
20-21 Smallware  
22-23 Covered Smallware  
24-25 Serveware  
26-27 Covered Serveware  
28-29 Boards

30-37

Cutlery + Eco<sup>2</sup>

30-33 Cutlery  
34-37 Eco<sup>2</sup>

38-46

Showcasing Innovative Packaging

38 Logos + Packaging  
39 Fast Casual + Sports  
40-41 Hotels  
42-43 Catering  
44 Tastings  
45 Cheese

## KEEP IN TOUCH

Follow us to stay up to date on the latest trends and uses for VerTerra Dinnerware. Want to be featured next year? Tag us on Instagram, Facebook, and Twitter.

@VERTERRADINNERWARE #VERTERRADINNERWARE

Pat. and Pat. Pending: [www.verterra.com/pages/patent](http://www.verterra.com/pages/patent)

## QUESTIONS?

212-760-1200  
INFO@VERTERRA.COM

## WHOLESALE/DISTRIBUTOR INQUIRY?

SALES@VERTERRA.COM

OFFICIAL HOUSE  
PURVEYOR TO THE JAMES  
BEARD FOUNDATION



OFFICIAL PALM LEAF  
PLATE OF THE  
INTERNATIONAL  
CATERERS ASSOCIATION



OFFICIAL COMPOSTABLE  
OF NACE - NATIONAL  
ASSOCIATION FOR  
CATERING AND EVENTS



sku 01-01-10B

## About Us

VerTerra produces stylish - sustainable - disposable dinnerware and packaging. Our products are Eco-friendly and create an elevated look in the food industry. Founded on the principle of creating a better planet, VerTerra is committed to creating sustainable products out of fallen palm leaves and balsa wood from leftover tree trunks.

Pat. and Pat. Pending: [www.verterra.com/pages/patent](http://www.verterra.com/pages/patent)

### THE CREATION

VerTerra was created by CEO Michael Dwork. During a trip to India in 2005, Michael encountered the palm leaf plate for the first time. He watched as a woman began soaking fallen palm leaves in water and pressing them into a crude waffle iron - creating an all-natural plate that she then served traditional India cuisine on. Michael was instantly inspired by this creation and knew it would be the perfect alternative to traditional paper disposable dinnerware.

## SOCIAL RESPONSIBILITY

Through our network of factories, we have created employment for over 500 women in rural India and Indonesia. Our goal has been to stay as true as possible to the original craft product that is originally made by women.

Our Balsa line is made from the leftover tree stumps from certified renewable tree farms after the tree is felled our team removes the stumps and the other leftovers to be used as the raw material for our balsa product collection.

Our factories recycle the water used during the manufacturing process and the leftover leaf bits are used as food for livestock such as cattle or turned into an organic compost.

The palm leaf line is created solely from palm leaves and water, there are no glues, plastics, lacquers, veneers, or toxins used in the process.

VerTerra's line of palm leaf dinnerware, patented collapsible boxes, patent-pending cheese boards, and serveware provide a wide variety of options for every customer's need. These compostable products withstand hot and cold food and liquids and are also microwave and oven safe. VerTerra products are lightweight, durable, and have a unique streamlined appearance - Perfect for a multitude of uses within the food and beverage landscape.

## AWARDS

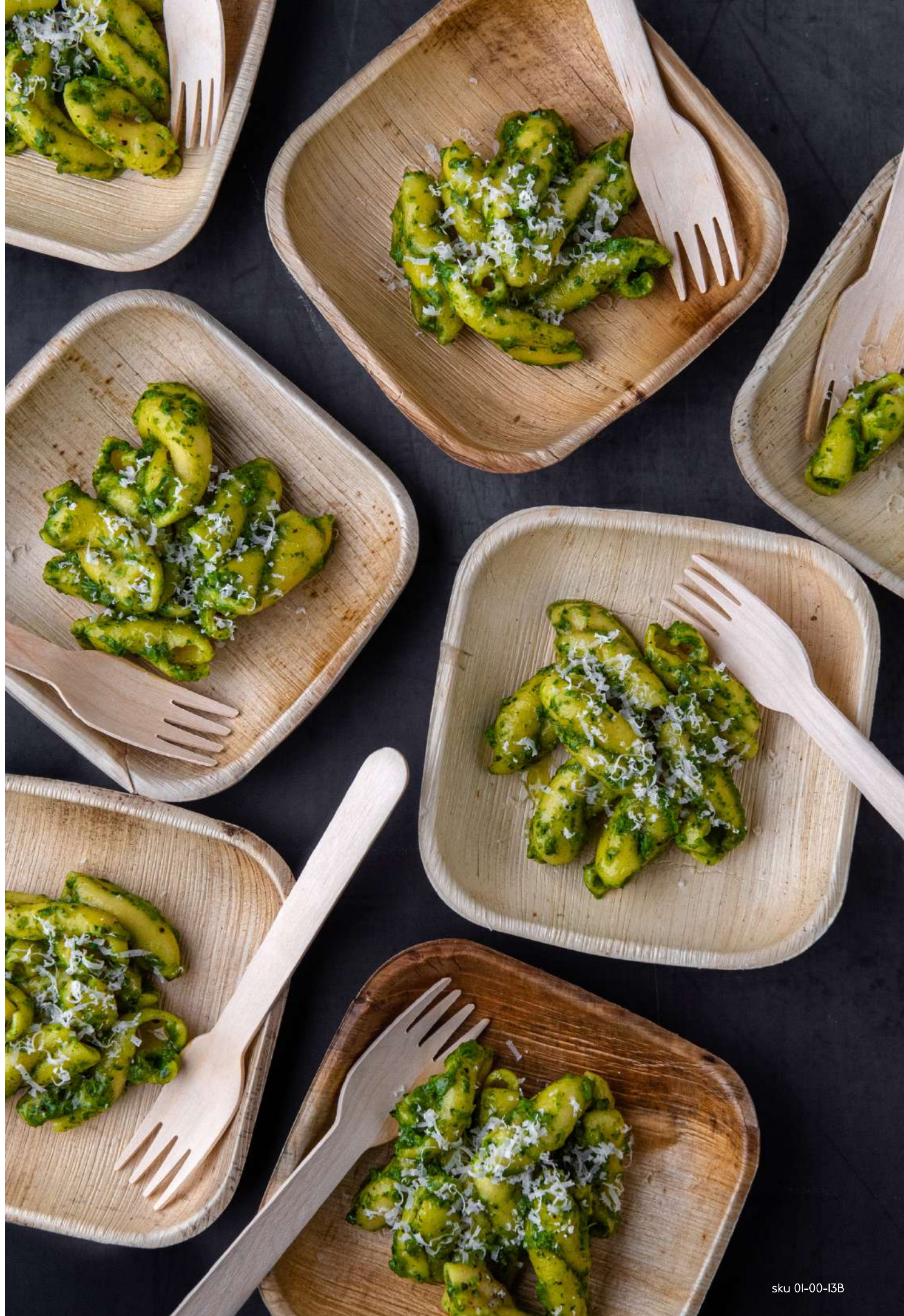
VerTerra is proud to be an official house purveyor of the James Beard Foundation since 2011

VerTerra is proud to be the official palm plate compostable of the National Association for Catering and Events (NACE) since 2016

<p><b>2015-2018</b> Palm Beach Food + Wine <b>SILVER SPONSOR</b></p>	<p><b>2015</b> Partner of the Year <b>NACE - NATIONAL ASSOCIATION FOR CATERING AND EVENTS</b></p>	<p><b>2014</b> Int's Hotel Motel Show <b>BEST NEW PRODUCT</b></p>	<p><b>2014</b> NY Restaurant Show <b>PEOPLE'S CHOICE</b></p>
<p><b>2014</b> Ihmrs <b>BEST NEW PRODUCT - TABLETOP</b></p>	<p><b>2011</b> Plant Edible <b>SUSTAINABILITY AWARD</b></p>	<p><b>2011</b> Edible Magazine <b>SUSTAINABILITY AWARD</b></p>	<p><b>2008 + 2009</b> National Products Expo East <b>BEST NEW PRODUCT</b></p>

"It is with pleasure that I share not only does The James Beard Foundation enjoy and appreciate using VerTerra at our events, but our chefs do as well. The line of plates and bowls are the perfect sizes for your special events whether they by seated dinners or walk about receptions. They are not only beautiful, and very photogenic, but sturdy as well."

Shelley Menaged, Special Events Coordinator  
THE JAMES BEARD FOUNDATION



sku 01-00-13B

## About

### DINNERWARE FROM FALLEN LEAVES™

Our signature DFFL-PALM product range was innovated in 2006. It has been awarded dozens of times for its unmatched quality. We are the leader in palm dinnerware production and the only integrated manufacturer of palm leaf plates. Having our own factories affords us to produce the highest standard. Our Palm leaf products are created solely from unused palm leaves and water. Our Dinnerware is natural and is created without any chemical coatings. The design is recognized by the Cooper Hewitt Design Museum - elegant but durable these products are microwave and oven safe. They can handle hot and cold food, liquids, and oils.

Pat. and Pat. Pending: [www.verterra.com/pages/patent](http://www.verterra.com/pages/patent)

#### SUSTAINABLE

Our dinnerware is made from fallen palm leaves (that would otherwise be burned), steam, heat and pressure. No plants or trees are cut or harmed in the process.

#### BIODEGRADABLE

Our dinnerware will naturally biodegradable at home or in an industrial compost without using chemical agents.

#### COMPOSTABLE

VerTerra products are BPI-certified compostable and tests have shown that soil containing VerTerra compost enhances plant growth by over 15%.

#### DURABLE + VERSATILE

Our products can withstand hot food, liquids, and oils. Thoughtfully designed, our products act as a natural insulator. Verterra dinnerware will not leak or impart taste.

#### MICROWAVE + OVEN SAFE

VerTerra dinnerware can withstand two minutes in the microwave on a high heat setting or up to 45 minutes in the oven at 350 °F as long as they are at least 6" from the heat source.



sku 01-00-22B



sku 01-22-13B

# The Process

## DINNERWARE FROM FALLEN LEAVES™

### BORROWED FROM THE EARTH AND RETURNED

VerTerra palm dinnerware is made in our network of factories in India, where employees work in a safe environment, receive fair wages, and access to health care. The production process is simple and transparent: after collecting fallen leaves that would normally be burned, we apply steam, heat and pressure to transform the leaves into dinnerware that will compost naturally in two months.

Our priority is to be true to the Earth. We are always developing new ways to make the entire process - from gathering materials, to delivering our palm leaf dinnerware to your party - more Eco-friendly.

The first step in making our leaf dinnerware is to collect fallen leaves from plantations. Trees are not cut down during this process. The leaves are then brought into the factory, where they are sprayed with high-pressure water, steamed and UV-sterilized. As a creation of only two products, palm leaves and water, our palm leaf dinnerware is completely non-toxic and chemical free. Our dinnerware can withstand up to 2 minutes in the microwave on a high heat setting or up to 45 minutes in the oven at 350° F, as long as they are at least 6" from the heat source. Over 80% of the water used in this process is recaptured and reused. In fact, the whole manufacturing processes only requires 10% of the energy used in recycling. No chemicals, lacquers, glues, bonding agents, or other toxins are added to our compostable products, which keeps your meal and our Earth free from harm.

Pat. and Pat. Pending: [www.verterra.com/pages/patent](http://www.verterra.com/pages/patent)



sku 01-20-20B



sku 02-25-05C



sku 01-20-25B, 01-22-10B



sku 01-01-10B



01

#### Gather Leaves

Fallen Palm leaves are collected and brought to our factories in India.

02

#### Steam & Press

The leaves are then steamed + sterilized then they are pressed into shape.

03

#### Heat

The palm leaves are then heated to finish the product. They will now retain their shape.

04

#### Use & Enjoy

The products are ready to display culinary creations + inspire new uses.

05

#### Compost

The Products are BPI Certified compostable in an industrial facility or can be composted at home.

06

#### Back to the Earth

Soil containing VerTerra compost enhances plant growth by 15%.

### WHY YOU'LL LOVE DINNERWARE FROM FALLEN LEAVES™

All-natural product made from only fallen palm leaves, steam, heat and pressure

Fallen palm leaves would otherwise be burned as waste

Certified compostable in fewer than 60 days in an industrial facility

No heat transference

BPI-certified 100% compostable



Palm leaf becoming VerTerra Dinnerware

# Plates + Trays

DINNERWARE FROM FALLEN LEAVES™



Our wide range of dinnerware is the solution to matching your sustainability goals with your business practices. Pat. and Pat. Pending: [www.verterra.com/pages/patent](http://www.verterra.com/pages/patent)



**7" ROUND PLATE** sku 01-01-20B Qty: 300  
 sku 01-01-20H Qty: 100  
**8" ROUND PLATE** sku 01-01-22B Qty: 300  
**10" ROUND PLATE** sku 01-01-25B Qty: 300  
 sku 01-01-25H Qty: 100  
**10" DEEP ROUND PLATE** sku 01-00-30D Qty: 300  
**6" ROUND LIP PLATE** sku 01-33-15B Qty: 300  
 sku 01-33-15H Qty: 100  
**9" ROUND LIP PLATE** sku 01-33-25B Qty: 300



**2"x 4" MINI TRAY** sku 01-22-05B Qty: 600  
**4"x 10" TRAY** sku 01-22-18B Qty: 300  
**4.5" x 6" TRAY** sku 01-22-12B Qty: 300  
**6"x 9" TRAY** sku 01-22-6X9 Qty: 300  
**10" x 15.5" TRAY** sku 01-00-40T Qty: 50  
**4"x 4" PLATE** sku 01-22-10B Qty: 600  
**4"x 4" DEEP PLATE** sku 01-22-10D Qty: 600  
 sku 01-22-10DH Qty: 100



**5"x 5" PLATE** sku 01-22-13B Qty: 300  
 sku 01-22-13H Qty: 100  
**6"x 6" PLATE** sku 01-22-15B Qty: 300  
**7"x 7" PLATE** sku 01-00-16B Qty: 300  
 sku 01-00-16H Qty: 100  
**7"x 8.5" PLATE** sku 01-22-22B Qty: 300  
**8"x 8" PLATE** sku 01-20-20B Qty: 300  
**9"x 9" PLATE** sku 01-20-25B Qty: 300  
 sku 01-20-25H Qty: 100



**9"x 9" TWO COMPARTMENT PLATE** sku 02-25-02C Qty: 300  
**9" x 9" THREE COMPARTMENT PLATE** sku 02-25-03C Qty: 250  
**9" x 9" FOUR COMPARTMENT PLATE** sku 02-25-04C Qty: 300  
**9" x 9" FIVE COMPARTMENT PLATE** sku 02-25-05C Qty: 300  
**10"x 10" PLATE** sku 01-20-25C Qty: 300

# Bowls

DINNERWARE FROM FALLEN LEAVES™

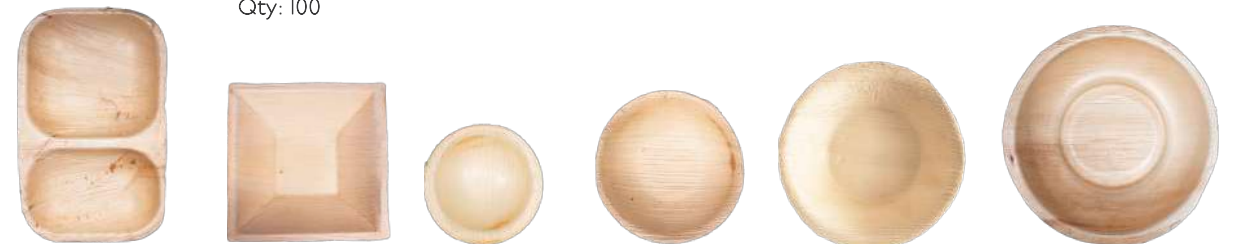


The possibilities are endless with our range of bowls. The smaller sizes are the industry standard for tastings. The larger sizes elegantly display main dishes, entrées, salads, and more! Our dinnerware is designed to be able to handle hot and cold food/liquids, and oils.

Pat. and Pat. Pending: [www.verterra.com/pages/patent](http://www.verterra.com/pages/patent)



**3"x 3" BOWL (2oz)** sku 01-01-11B Qty: 600  
**5"x 5" BOWL (12oz)** sku 01-00-18B Qty: 300  
 sku 01-00-18H Qty: 100  
**6"x 6" BOWL (12oz)** sku 01-00-13B Qty: 300  
**6"x 8" BOWL (12oz)** sku 01-00-15B Qty: 300  
 sku 01-00-15H Qty: 100  
**8"x 8" BOWL (24oz)** sku 01-00-20B Qty: 300



**6"x 11" TWO COMPARTMENT BOWL (6oz)(4oz)** sku 01-00-13P Qty: 200  
**PYRAMID BOWL (16oz)** sku 02-22-6PY Qty: 300  
**2.5" ROUND BOWL (2oz)** sku 01-01-02B Qty: 600  
**3.5" ROUND BOWL (3oz)** sku 01-01-10B Qty: 600  
**5" ROUND BOWL (8oz)** sku 01-00-5DR Qty: 300  
**8"x 8" SALAD BOWL (32oz)** sku 01-00-22B Qty: 300



sku 01-01-10B



sku 02-22-6PY



sku VT-BX-750

## Palm With Lids



### PALM LIDS

To celebrate 15 years we are launching the first ever Palm Leaf To-Container. An all palm base and lid fully compostable and an elegant addition to our line of palm products. Microwave and oven safe, stackable and perfect for meal delivery and drop off.



**8.4"x 6.6" PLATE AND LID**  
sku VT-BX-750  
Qty: 200



**9"x 5.5" PLATE AND LID**  
sku VT-BX-1000  
Qty: 100

### PLATE RIM LOCK PLASTIC LIDS

The Rim-Lock lid system is a patent pending system that allows a plate to turn into a "to-go" container. Once filled the plate locks into the base of the recyclable vessel for transport keeping your meal safe and allowing stackability in transport. When you arrive at your location you can open the container and remove the plate and recycle the Rim-Lock lid or wash and reuse.



**6" PLATE PLASTIC LID**  
sku VT-LD-6X6PT  
Qty: 150



**8" PLATE PLASTIC LID**  
sku VT-LD-8X8PT  
Qty: 150



**9" PLATE PLASTIC LID**  
sku VT-LD-9X9PT  
Qty: 150



sku VT-BX-750



sku VT-BX-750

# Paper Board To-Go



sku VT-PB-11x9-3C

## Paper Board To-Go



VerTerra's amazing new patent pending hybrid marries the elegant features of our wooden boxes with the economical savings of Paper Board items. True separation means the foods in the compartments will not mix, 2 lid & 2 front locks providing a tamper evident seal. And our patented reflexive / fold back lid is built in for a clean table presentation. Pat. and Pat. Pending: [www.verterra.com/pages/patent](http://www.verterra.com/pages/patent)



**7"x 9" 3 COMPARTMENT BENTO BOX**  
sku VT-PB-9x7-3C  
Qty: 200



**9"x 11" 3 COMPARTMENT BENTO BOX**  
sku VT-PB-11x9-3C  
Qty: 150



**10"x 10" 3 COMPARTMENT BENTO BOX**  
sku VT-PB-10x10-3C  
Qty: 120

### PAPER BOARD BOXES

VerTerra's lined kraft paper boxes improve upon an existing concept. Water / Oil proof and stackable our modified versions are more durable with reinforced corners and a modified D-lock so the lids lock and stay closed.



**KRAFT FOOD BOX 26 OZ.**  
sku VT-ECO2-KFB26  
Qty: 400



**KRAFT FOOD BOX 45 OZ**  
sku VT-ECO2-KFB45  
Qty: 300



**KRAFT FOOD BOX 55 OZ**  
sku VT-ECO2-KFB55  
Qty: 200



**KRAFT FOOD BOX 66 OZ**  
sku VT-ECO2-KFB66  
Qty: 200



**KRAFT FOOD BOX 96 OZ**  
sku VT-ECO2-KFB96  
Qty: 160



sku VT-PB-9x7-3C



sku VT-PB-11x9-3C





sku TG-CB-IX5H, TG-LB-3X4

## Collapsible Boxes



Our sleek and modern to-go-boxes are a line of eco-friendly food containers that enhance any food service experience. The collapsible boxes have attached “flip-back” lids, they store completely flat and pop-open instantly saving 95% of storage space. They are created out of leftover wood and rice paper. Best of all they are sturdy, strong, stackable, oil resistant, water resistant, lightweight and biodegradable.  
 Pat. and Pat. Pending: [www.verterra.com/pages/patent](http://www.verterra.com/pages/patent)

### FAST ACTION OPENING

The possibilities are endless with our wooden to-go-boxes. The collapsible boxes store flat and pop open in one motion, saving time and space. Available in a wide range of sizes.





## COLLAPSIBLE BOXES



**4" x 6" x 2" SMALL BOX**  
sku TG-CB-4X6  
Qty: 300



**4" x 6" x 2" SMALL BOX W/ WINDOW LID**  
sku WB-CB-4X6  
Qty: 300



**6" x 6" x 1" SMALL BOX**  
sku TG-CB-6X6  
Qty: 300



**7" x 7" x 3" MEDIUM BOX**  
sku TG-CB-7X7  
Qty: 100



**6" x 8" x 3" MEDIUM BOX**  
sku TG-CB-6X8H  
Qty: 100



**6" x 8" x 3" MEDIUM BOX W/ WINDOW LID**  
sku WB-CB-6X8  
Qty: 50



**8" x 11" x 3" LARGE BOX**  
sku TG-CB-8XI  
Qty: 100



**8" x 11" x 3" LARGE BOX W/ WINDOW LID**  
sku WB-CB-8XI  
Qty: 50



**8" x 11" x 2" LARGE BOX**  
sku TG-CB-IX8  
Qty: 100



**11" x 15" x 2" X- LARGE BOX**  
sku TG-CB-IX5H  
Qty: 50



**11" x 15" x 3" X-LARGE BOX**  
sku TG-CB-5XIH  
Qty: 50

## VENTO™ (VARIABLE BENTO) COLLAPSIBLE BOXES



The Vento series adds a new dimension to the patented collapsible box with changeable bento inserts. Included in each set are click in dividers to create six different bento/compartmented boxes: single compartment or split 2,3,4,6, or 8 compartment box.

Pat. and Pat. Pending: [www.verterra.com/pages/patent](http://www.verterra.com/pages/patent)



**6" x 8" x 3" MEDIUM VENTO BOX**  
sku TG-BB-6X8  
Qty: 50



**6" x 8" x 3" MEDIUM VENTO BOX W/ WINDOW LID**  
sku WB-BB-6X8  
Qty: 50



**8" x 11" x 3" LARGE VENTO BOX**  
sku TG-BB-8XI  
Qty: 50



**8" x 11" x 3" LARGE VENTO BOX W/ WINDOW LID**  
sku WB-BB-8XI  
Qty: 50

## CLICK N LOCK

The Click N Lock are two piece double walled boxes. They are extremely durable, stackable, and leak resistant. Ideal for saucy foods.



**3" X 4" x 2" PETITE TO-GO-BOX**  
sku TG-LB-3X4  
Qty: 300



**7" X 9" x 3" MEDIUM TO-GO-BOX**  
sku TG-LB-7X9H  
Qty: 50



sku TG-CB-8XI



sku TG-CB-7X7, TG-CB-5XI



sku TG-DE-7X7, TG-DE-3X8



## Smallware

Save time by prepping in advance and serving on our smallware serving platters. Sourced from leftover wood and rice paper our smallware line is water resistant, oil resistant, compostable and biodegradable. They are light-weight, space saving (store flat), and disposable after use. Pat. and Pat. Pending: [www.verterra.com/pages/patent](http://www.verterra.com/pages/patent)

### FIXED SIDED



**2"x 3" MINI TRAY**  
sku TG-DE-2X3  
Qty: 300



**3"x 8" SMALL TRAY**  
sku TG-DE-3X8  
Qty: 300



**FIXED-SIDED BOAT**  
sku TG-HD-3X8  
Qty: 300



**5"x 5" SQUARE**  
sku TG-SE-5X5  
Qty: 300



**5"x 7" MEDIUM RECTANGLE**  
sku TG-DE-5X7  
Qty: 300



**7"x 7" SQUARE**  
sku TG-DE-7X7  
Qty: 300

### COLLAPSIBLE



**6"x 6" DISH COLLAPSIBLE**  
sku TG-CS-6X6  
Qty: 300



sku TG-CS-6X6



sku TG-DE-2X3

# Covered Smallware



sku TG-CT-5.6x5.6

## Covered Smallware



Redefining drop off catering. VerTerra's newest version of our classic balsa to-go boxes. The line incorporates a sustainable Eco-Friendly Balsa wood base: a strong and elegant serving piece for all your drop off and delivery needs. Paired with a unique patent pending closure, a recycled and recyclable PET lid. This lids lock on for safety and allows for stacking. The base and lids ship as a combo pack.



- 4.3"x 4.3" TRAY**  
sku TG-CT-4.3x4.3  
Qty: 100
- 4.6"x 4.6" TRAY**  
sku TG-CT-4.6x4.6  
Qty: 100
- 5.5"x 4.25" TRAY**  
sku TG-CT-5.5X4.25  
Qty: 100
- 5.6"x 5.6" TRAY**  
sku TG-CT-5.6x5.6  
Qty: 100
- 6"x 3.5" TRAY**  
sku TG-CT-6X3.5  
Qty: 100
- 6"x 8" TRAY**  
sku TG-CT-6x8S  
Qty: 100



- 6"x 8" DEEP TRAY**  
sku TG-CT-6x8D  
Qty: 100
- 7"x 2" TRAY**  
sku TG-CT-7x2  
Qty: 100
- 7"x 5" TRAY**  
sku TG-CT-7x5  
Qty: 100
- 7"x 7" TRAY**  
sku TG-CT-7x7  
Qty: 100
- 7.5"x 3.5" TRAY**  
sku TG-CT-7.5X3.5  
Qty: 100



sku TG-CT-6x8D



sku TG-CT-6X3.5



sku TG-CS-IX5



## Serveware

With your bottom line in mind, we designed a range of elegant, durable, and affordable serveware. Perfect for drop-off events, gatherings, dinner parties, and more! Our streamlined products save time, labor, space, and have a sleek appearance. Versatile and stylish, these trays frame your culinary creations like a work of art - elevating creative presentation.

Pat. and Pat. Pending: [www.verterra.com/pages/patent](http://www.verterra.com/pages/patent)



**7"x 7" x 4" DEEP 3LB  
FIXED SIDED VESSEL  
W/ PARTITION**  
sku TG-DE-07D  
Qty: 50



**12"x 12" x 4" DEEP 10LB-  
FIX SIDED VESSEL WITH  
DIAGONAL PARTITION**  
sku TG-DE-I2DH  
Qty: 25



**12"x 12" x 1" FIXED  
SIDED TRAY**  
sku TG-DE-I2S  
Qty: 100



**16"x 16" x 1" FIXED  
SIDED TRAY**  
sku TG-DE-I6S  
Qty: 50



**11"x 15" x 2" LARGE  
COLLAPSIBLE TRAY**  
sku TG-CS-IX5  
Qty: 100



**11"x 15" x 3" DEEP LARGE  
COLLAPSIBLE TRAY**  
sku TG-CS-5XI  
Qty: 100



**11"x 15" x 1.25" FIXED SIDED  
LARGE TRAY**  
sku TG-DE-IX5  
Qty: 100



sku TG-CS-5XI, TG-LB-3X4



sku TG-CS-5XI

# Covered Serware

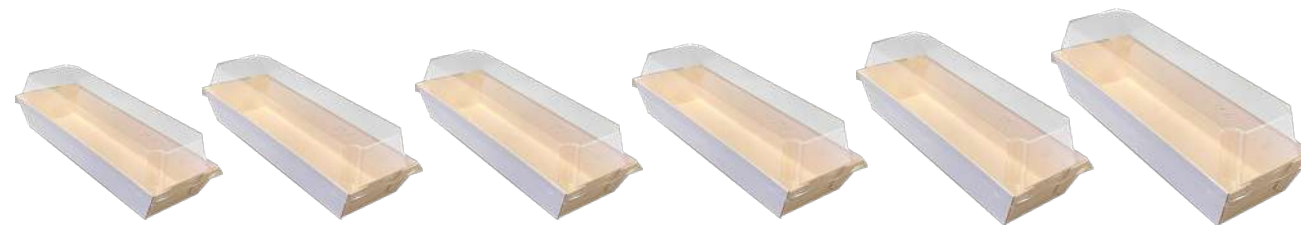


sku TG-CT-8x11S

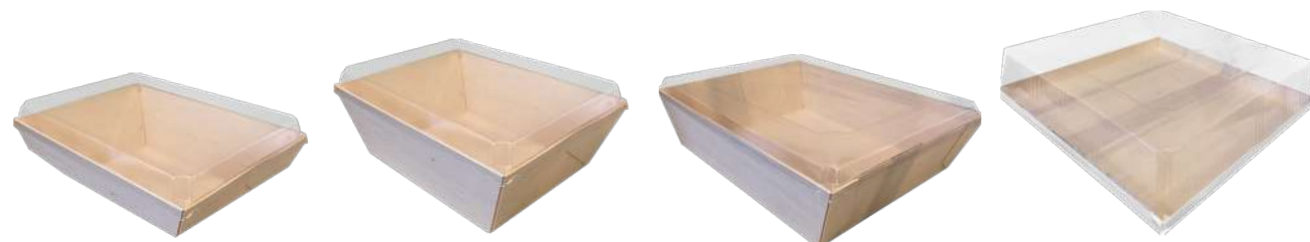
## Covered Serware



Redefining drop off catering. VerTerra's newest version of our classic balsa to-go boxes. The line incorporates a sustainable Eco-Friendly Balsa wood base: a strong and elegant serving piece for all your drop off and delivery needs. Paired with a unique patent pending closure, a recycled and recyclable PET lid. This lids lock on for safety and allows for stacking. The base and lids ship as a combo pack.



- 7.7"x 3" TRAY**  
sku TG-CT-7.7x3  
Qty: 100
- 8.5"x 3.25" TRAY**  
sku TG-CT-8.5x3.25  
Qty: 100
- 8.7"x 3.4" TRAY**  
sku TG-CT-8.7x3.4  
Qty: 100
- 9.8"x 3" TRAY**  
sku TG-CT-9.8x3  
Qty: 100
- 10"x 2.5" TRAY**  
sku TG-CT-10x2.5  
Qty: 100
- 11.8"x 2.6" TRAY**  
sku TG-CT-11.8x2.6  
Qty: 100



- 8"x 11" TRAY**  
sku TG-CT-8x11S  
Qty: 50
- 8"x 11" DEEP TRAY**  
sku TG-CT-8x11D  
Qty: 50
- 11.8"x 15" TRAY**  
sku TG-CT-11x15  
Qty: 50
- 16"x 16" TRAY**  
sku TG-CT-16x16  
Qty: 25



sku TG-CT-8x11D



sku TG-CT-7.7x3



sku CB-RC-5X10



## Chef Boards

### CHEESE - CHARCUTERIE - SANDWICHES - PIZZA - SUSHI

These boards are the first of their kind, lightweight, portable, durable, and priced right. Our boards are perfect for serving and displaying. Commonly used as a cheeseboard - the possibilities of other uses are endless. These boards perform the tasks of their permanent counterpart but are disposable and require no clean up. Pat. and Pat. Pending: [www.verterra.com/pages/patent](http://www.verterra.com/pages/patent)

### SQUARE

Personal



**5" x 5" BOARD**  
sku CB-SQ-5X5  
Qty: 200

2-4 Person Board



**8" x 8" BOARD**  
sku CB-SQ-8X8  
Qty: 100

5-10 Person Board



**11" x 11" BOARD**  
sku CB-SQ-1X1  
Qty: 50

### RECTANGULAR

Cocktail and Tasting



**2" x 4" BOARD**  
sku CB-RC-2X4  
Qty: 200

2-4 Person Board



**5" x 10" BOARD**  
sku CB-RC-5X1  
Qty: 100

5-10 Person Board



**8" x 12" BOARD**  
sku CB-RC-8X2  
Qty: 100



sku CB-SQ-5X5



sku CB-RC-8X2

## Cutlery Guide



### WOODEN - HEAVYWEIGHT

We have worked to design the perfect wooden cutlery by using ridging and darting to enhance strength and prevent breakage. There is also a bake-in proprietary confectionery glaze to eliminate the wood taste other similar products have. Simply put, they work: sturdy, durable, and designed to perform like permanent products.



### WOODEN - MEDIUM WEIGHT

Without compromising quality we re-engineered our original heavy weight cutlery to be 0.75in shorter and slightly lighter. Allowing us to offer a lower cost option for those that don't require as robust a line of cutlery. Still including the proprietary baked-in glaze to eliminate the wood taste this product performs as well as its larger predecessor.



### WOODEN - LIGHT WEIGHT

For the value focused environmentally concerned customer this line provides a cost efficient eco-friendly solution vs plastic. We were able to pack all sorts of advantages other manufacturers can't at this price point. Still produced with no concern for splinters or dust in the box this is an amazing value product. However without the glaze or reinforcing ridging our other products have this is intended for lighter fare.



### WOODEN - CLICK N EAT

Our tradition cutlery takes a new turn with the Click N' Eat Wooden Cutlery Duo. This full-sized Fork and Knife is already attached for your culinary convenience. Perfect for outdoor/indoor dining, and drop off catering. This product is lightweight, and will stack neatly. Just click apart, eat, and enjoy!



### PLANTWARE

Made from 100% renewable resources and PLA, Aplant-based plastic, Plantware Cutlery is completely compostable, renewable, and heat resistant. All items meet ASTM standards for compostability. Their crystallized formulation adds strength and heat tolerance of 200 Degrees F.

Pat. and Pat. Pending: [www.verterra.com/pages/patent](http://www.verterra.com/pages/patent)



# Cutlery



## WOODEN - HEAVYWEIGHT \* No wood taste



**7" WOODEN SPOON**  
sku VT-2418  
Qty: 1000



**7" WOODEN FORK**  
sku VT-2420  
Qty: 1000



**7" WOODEN KNIFE**  
sku VT-2419  
Qty: 1000



**7" CUTLERY KIT**  
sku VT-2417  
Qty: 300



**4" WOODEN TASTING SPORK**  
sku VT-2406  
Qty: 2500



**4" WOODEN TASTING SPOON**  
sku VT-2407  
Qty: 2500

## WOODEN - MEDIUM WEIGHT \* No wood taste



**7" WOODEN SPOON**  
sku VT-E2-MS  
Qty: 1000



**7" WOODEN FORK**  
sku VT-E2-MF  
Qty: 1000



**7" WOODEN KNIFE**  
sku VT-E2-MK  
Qty: 1000



**7" CUTLERY KIT**  
sku VT-E2-MC  
Qty: 400

Pat. and Pat. Pending: [www.verterra.com/pages/patent](http://www.verterra.com/pages/patent)



sku VT-2420, VT-2419



sku VT-2406

# Cutlery



## WOODEN - LIGHT WEIGHT \* No wood taste



**6" WOODEN SPOON**  
sku VT-E2-I3  
Qty: 1000



**6" WOODEN FORK**  
sku VT-E2-II  
Qty: 1000



**6" WOODEN KNIFE**  
sku VT-E2-I2  
Qty: 1000



**7" CUTLERY KIT**  
sku VT-E2-LC  
Qty: 400



**7" WOODEN CLICK N EAT**  
sku VT-CE-FK3  
Qty: 300



## PLANTWARE



**6" PLANTWARE SPOON**  
sku EP-S013  
Qty: 1000



**6" PLANTWARE FORK**  
sku EP-S012  
Qty: 1000



**6" PLANTWARE KNIFE**  
sku EP-S011  
Qty: 1000



**6" PLANTWARE KIT**  
sku EP-S015  
Qty: 250



**3" PLANTWARE TASTING SPOON**  
sku EP-S016  
Qty: 2000

Pat. and Pat. Pending: [www.verterra.com/pages/patent](http://www.verterra.com/pages/patent)



sku VT-E2-MC



sku TG-CB-8XI, EP-S012



VT-CN-07, VT-PK-03, VT-BT-05,  
VT-BT-06, VT-BT-08, VT-SK-03

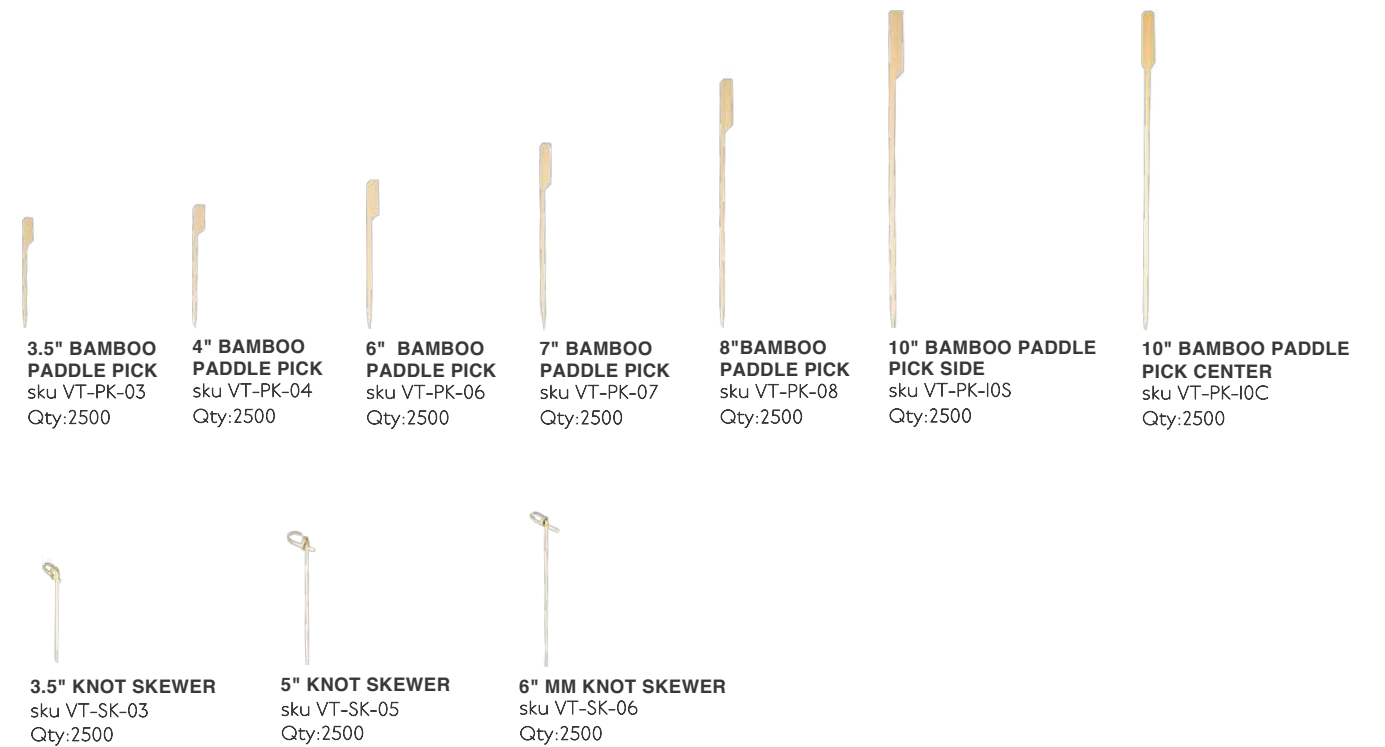
## Eco<sup>2</sup> Economically Eco-Friendly™



Thanks to demand we have created an economically priced line of products that are eco-friendly. While they are stylish and economically priced, they aren't as durable as our main line, allowing us to offer an economical line. Pat. and Pat. Pending: [www.verterra.com/pages/patent](http://www.verterra.com/pages/patent)

### ECO<sup>2</sup>™ BAMBOO PADDLES + SKEWERS

Our bamboo paddles + skewers are a simple accessory for your culinary creations. We offer a wide range of sizes to meet your every need from appetizers to kabobs. They are a great replacement when a fork isn't needed.



sku VT-PK-06



sku VT-SK-05

# Eco<sup>2</sup> Economically Eco-Friendly™



Pat. and Pat. Pending: [www.verterra.com/pages/patent](http://www.verterra.com/pages/patent)

## ECO<sup>2</sup>™ WOODEN CONES

Our range of cones are popular for events and outdoor entertainment. Economically priced, these items are cost effective and get the job done!



**3" CONE**  
sku VT-CN-03  
Qty: 1000

**5" CONE**  
sku VT-CN-05  
Qty: 1000

**8" CONE**  
sku VT-CN-08  
Qty: 1000

## ECO<sup>2</sup>™ WOODEN BOATS

Our range of boats are popular for events and outdoor entertainment. Economically priced, these items are cost effective and get the job done!



**5" WOODEN BOAT**  
sku VT-BT-05  
Qty: 1000

**6" WOODEN BOAT**  
sku VT-BT-06  
Qty: 1000

**8" WOODEN BOAT**  
sku VT-BT-08  
Qty: 1000



sku VT-CN-05



sku VT-BT-06

# Eco<sup>2</sup> Economically Eco-Friendly™



Pat. and Pat. Pending: [www.verterra.com/pages/patent](http://www.verterra.com/pages/patent)

## WINE GLASS HOLD-A-PLATE™

Our HOLD-A-PLATE allows you to hold a wine glass or a beverage while also holding an appetizer. Free up a hand with our wine glass plate.



**6" WINE GLASS HOLD-A-PLATE**  
sku HP-EP-P6  
Qty: 600



## STABLE STRAWS

Our Stable Straws are all natural drinking straws that are 100% biodegradable and plastic free. Enjoy a drinking straw guilt free that is restaurant quality, eco-friendly, dye free, gluten free, and toxin free all while having no taste or odor.



**5" HAY STRAW**  
sku STR-05  
Qty: 2000

**8" HAY STRAW**  
sku STR-08  
Qty: 2000

**JUMBO 8" BAMBOO STRAW**  
sku VT-STR-8JBO  
Qty: 2000  
Diameter: 5-7mm  
Use: Soda /Cocktails

**XL 8" BAMBOO STRAW**  
sku VT-STR-8XL  
Qty: 2000  
Diameter: 7.5-10mm  
Use: Blended Drink

**BOBA 8" BAMBOO STRAW**  
sku VT-STR-8Boba  
Qty: 1000  
Diameter: 10.5-14mm  
Use: Boba Tea



sku STR-05, STR-08



sku STR-05

## PRINTED LOGO + PERSONALIZATION

We have been creating custom branded creations for customers with very low minimums since 2011. With a proprietary system we are able to use a laser without burning the palm material – ensuring nothing affects the taste of your food.

Our Balsa wood products are treated with a special silk screen to apply your logo in an elegant way. Our facilities are food safe and we have an installed capacity of 75,000 units a day and growing. Between our capacity and quality, we have all your needs covered.



## PACKAGING

Our high-quality sleek boxes are the best way to showcase your packaged food. These multi-purpose boxes are perfect for everything from gift baskets to grab and go/delivered food. VerTerra's packaging enhances the perceived value of the meal. Carry your brand beyond your physical location with our logo-ed options or customize yourself.



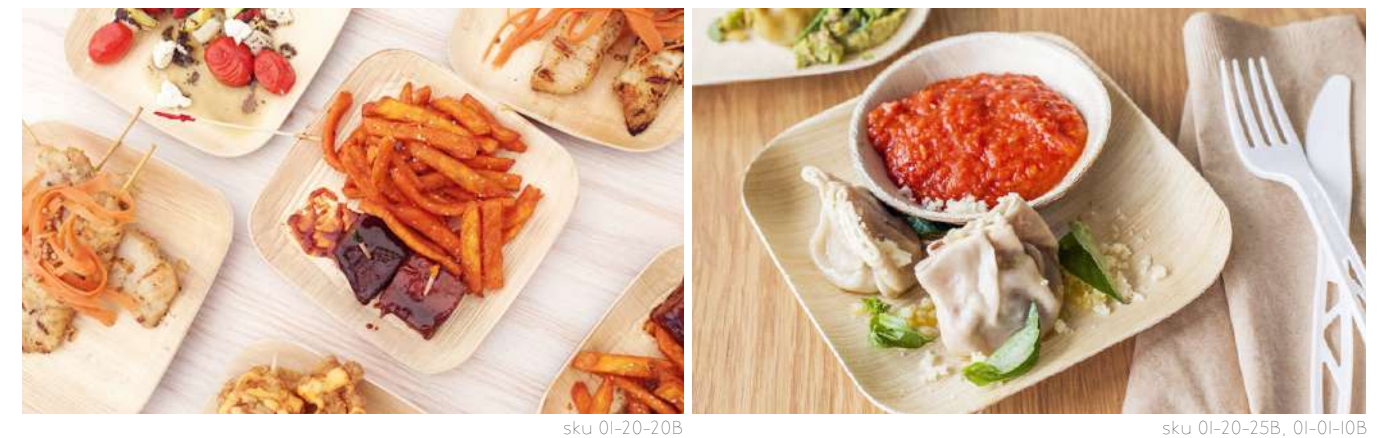
## Industry

### ECO-FRIENDLY PRODUCTS FIT FOR EVERY PURPOSE + INDUSTRY

VerTerra has a vast collection of products specifically designed to be multi-purpose. The wide variety allows our products to work seamlessly with a magnitude of industries across the food and beverage landscape. Between the palm leaf dinnerware, space saving collapsible boxes, chef boards, and serveware, VerTerra has a product for every need.

### FAST CASUAL

Our product range fits the need of many QSR and Fast Casual Concepts. Our line of fast casual items are the solution for an affordable and aesthetically pleasing customer experience. Whether your focus is organic, locally sourced, farm to table or another innovative food concept, match your plating and packaging with your food all while driving home the message of sustainability to your clients.



### SPORTS SERVICE

Our Palm + Balsa products are great for stadiums, arenas, and racetracks. Our products are portable, lightweight, and durable. Perfect for concessions and catered services. Avoid clean up by using sustainable disposable that are eco-friendly and compostable for your sports service needs!



## HOTELS

Create the perfect ambience in-room, poolside, at events, or as an amenity with our products. VerTerra is the answer to maintaining a high standard of guest experience with significantly lower cost. Our products perform and feel like permanent versions with the convenience of single-use: eliminate "slippage", breakage, loss, and keep your costs in line with your usage. In addition, save man power, prep/clean up, and storage all while maintaining your environmental goals.

## OUTDOOR/POOLSIDE



sku 01-00-13P, 01-00-15B, TG-CS-5X1



sku 02-25-03C, 01-00-40T, 01-00-18B

## AMMENITIES



sku TG-DE-2x3, TG-DE-12S, STR-05



sku TG-DE-IX5, 01-01-11B

## IN-ROOM DINING



sku TG-DE-5X7, CB-SQ-5X5, TG-DE-07D



sku 01-22-05B, 01-22-10B, 01-22-13B

## IN-ROOM DINING



sku TG-SE-5X5, CB-SQ-8X8, TG-DE-07D



sku TG-DE-IX5, TG-DE-07D

## POOL SIDE MEALS



sku TG-DE-12DH, TG-CB-IX5H



sku STR-05, STR-08

## PICK UP PACKAGING



sku VT-PB-11x9-3C



sku VT-BX-750

## SMALL AND MINI BUBBLE EVENTS



sku TG-CB-5X1



sku TG-DE-IX5

## CATERING

VerTerra is the ultimate sustainable solution to catering. We offer products that are perfect for on and off premise. From buffets to a seated event or passed appetizers, you will love the lightweight durable products with lower staffing needs for service and cleanup. Your customers will love the modern appearance and will enjoy that the products are environmentally friendly.



sku 0I-00-18B, CB-RC-8X2



sku TG-CS-IX5, TG-SE-125



0I-20-25B



CB-SQ-5X5



sku VT-2420, VT-2419, 0I-00-18B



sku TG-DE-12D, TG-DE-07D



sku TG-CB-IX5H



sku TG-CB-6X6



sku TG-BB-6X8



sku TG-CT-16x16

## SUSHI

Almost as if every product in our collection was designed to enhance the look of this delicious food the VerTerra line matches uniquely and perfectly to this cuisine.



sku TG-CB-6X8



sku WB-CB-6X8



sku TG-CB-8X1



sku TG-CT-7x2, TG-CT-4.6x4.6

## TASTINGS

Our minis have become the tasting industry standard with over 500+ major events using our products, such as: Aspen F&W, Feast Portland, Palm Beach Food and Wine, and more. Our "smalls" the 2.5", 3", 3.5", 4", and 6" products make it easy for you to run a compostable event, lowering staffing needs, and the added bonus of gorgeous food images. Our smalls will showcase the food and your event in the best light.



sku 01-01-10B, VT-2406



sku 01-20-20B



sku 01-22-10B



sku 01-22-10B



sku 01-22-10B



sku 01-22-10B



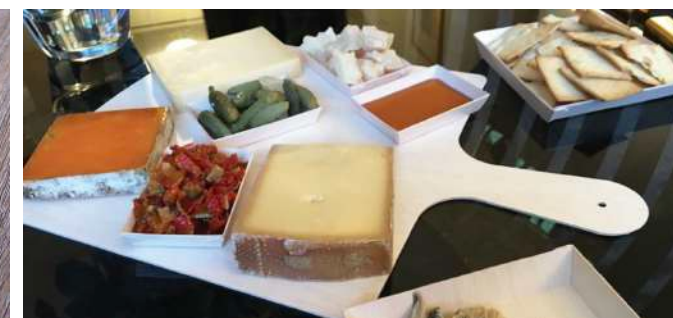
sku 01-22-10B

## CHEESE

Our elegant compostable products enhance your presentation and margin while also offering your customers convenience. Minimize setup and cleanup - just simply throw away or compost after use. Highlight your specialty offerings on VerTerra chef boards! Sell more than just cheese, sell an experience.



sku CB-SQ-8X8



CB-SQ-IXI, TG-SE-5X5



sku 01-22-18B



sku 01-22-22B

## BAKERIES + CHOCOLATIERS

Upgrade your packing by using VerTerra balsa wood boxes to instantly make your packaged goods look more desirable. Use them for to-go, gift packaging, and more! Our boxes are practical, priced right, and sustainable - while being sleek and stylish at the same time. Since our boxes are light-weight and store flat you won't have to worry about storage space!



sku TG-CB-4X6



sku TG-CB-8XI



sku TG-CB-5XI



sku TG-CB-7X7

"The first time I saw Verterra, I knew I had found something very special. Not only a sexy, modern, creative option for events. But really a break through in the availability to offer a product that you could feel good about using. In today's world where the importance of taking care of our environment is paramount...Verterra is leading the way with its unique and beautiful products! BRAVO! "

Gregory Hyder, Director of Style and Community Relations  
THE PENINSULA HOTEL



[Verterra.com](http://Verterra.com)   212.760.1200   [Info@Verterra.com](mailto:Info@Verterra.com)

545 8TH AVENUE, SUITE 810, NEW YORK, NY 10018