

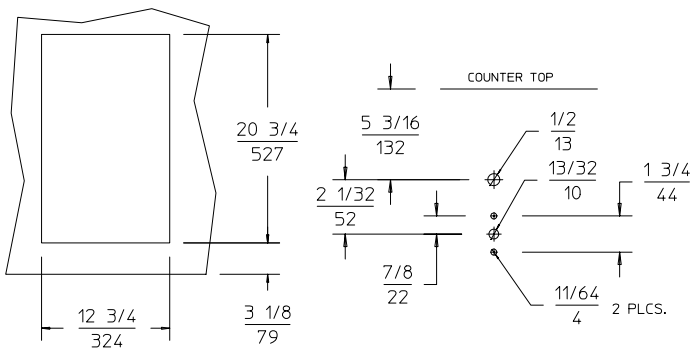
**BUILT-IN (TOP MOUNT) RECTANGULAR FOOD AND LIQUID WARMERS**

MODEL TM-90DS

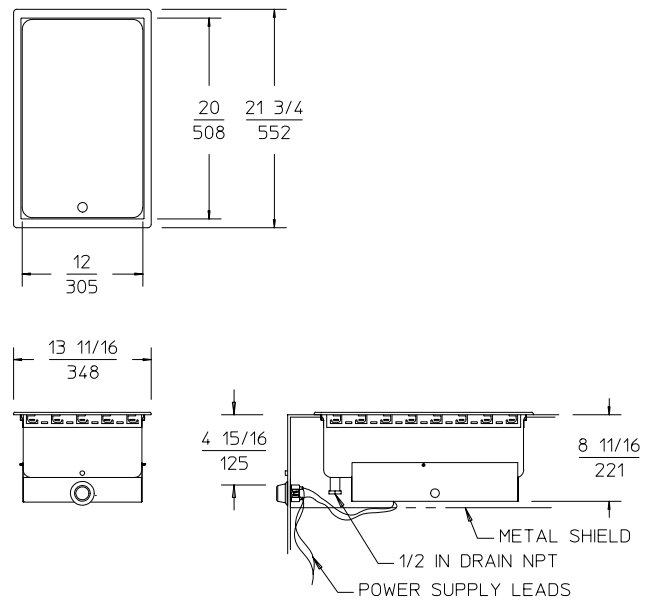
**ELECTRICAL**

MODEL	VOLTS	WATTS	AMPS	PHASE	FIELD WIRING GAUGE	TEMP. RATING
TM-90DS	120	1200	10	SINGLE	#14 AWG Cu	90°C MIN.
TM-90DS	208	1200	4.3	SINGLE	#14 AWG Cu	90°C MIN.
TM-90DS	240	900	5	SINGLE	#14 AWG Cu	90°C MIN.

**CUTOUT DETAILS**



**PRODUCT DIMENSIONS**



**CLEARANCES**

SUGGESTED CLEARANCES UNIT TO THE NEAREST SURFACE			
BACK	SIDE	BOTTOM	FRONT
2 51	2 51	6 3/4 171	4 1/8 105

SEE CONDITIONS OF ACCEPTABILITY BELOW  
NOTE: DEPENDING ON THE INSTALLATION, CLEARANCES CAN BE FURTHER REDUCED UPON EVALUATIONS TO UL STANDARDS.

**INSTALLATION INSTRUCTIONS**

UNIT MUST BE INSTALLED IN AN ALL METAL COUNTER

THE INSTALLATION OF RECOGNIZED COMPONENT UNITS REQUIRES ADDITIONAL EVALUATIONS TO UNDERWRITERS LABORATORIES INC. STANDARDS.

INSTALLER MUST MEET CONDITIONS OF ACCEPTABILITY OUTLINED BELOW UPON INSTALLATION:

1. This appliance shall be installed in an all metal counter with suitable wiring and control enclosures conforming to national and local standards.
2. Electrical component temperatures, including wiring, within and surrounding the appliance must be monitored in the end use installation for suitability.
3. Electrical grounding of all dead metal parts must be reliably connected to the grounding means of the appliance and must comply with requirements outlined in the appropriate Underwriters Laboratories Inc. classification, national and local electrical codes.
4. Increased clearances are required if storage of combustible materials is in close proximity to this appliance.
5. Unit shall be accessible for servicing from bottom.
6. The name/rating plate information shall be accessible.
7. For water and waste connections: This appliance is to be installed to comply with applicable federal, state and local plumbing codes.

TO FABRICATE AND INSTALL:

1. Lay out cutout dimensions on countertop and control panel as shown in cutout details.
2. Cut and/or drill holes as required in countertop and apron.
3. Do not disconnect control lead wires when installing.
4. To install, locate warmer and control over counter cut-out. Pass control through opening, then mount control electrical box to rear of apron.
5. Remove warmer and apply a bead of silicone sealant to gasket on underside of warmer flange, then seat warmer onto countertop. Properly position.
6. From underneath, insert screwdriver into slots on E-Z Lock frame and twist ears outward (counter-clockwise) to secure flange tightly to countertop (see detail above).
7. Mount master control panel to front of counter apron using screws supplied.

NOTE: The TM-90DS warmer is supplied with a drain hole at one end and a 1/2 inch female N.P.T. drain nipple.

NOTE: INSTALLATION MUST MEET LOCAL AND NATIONAL PLUMBING AND ELECTRICAL CODES.

