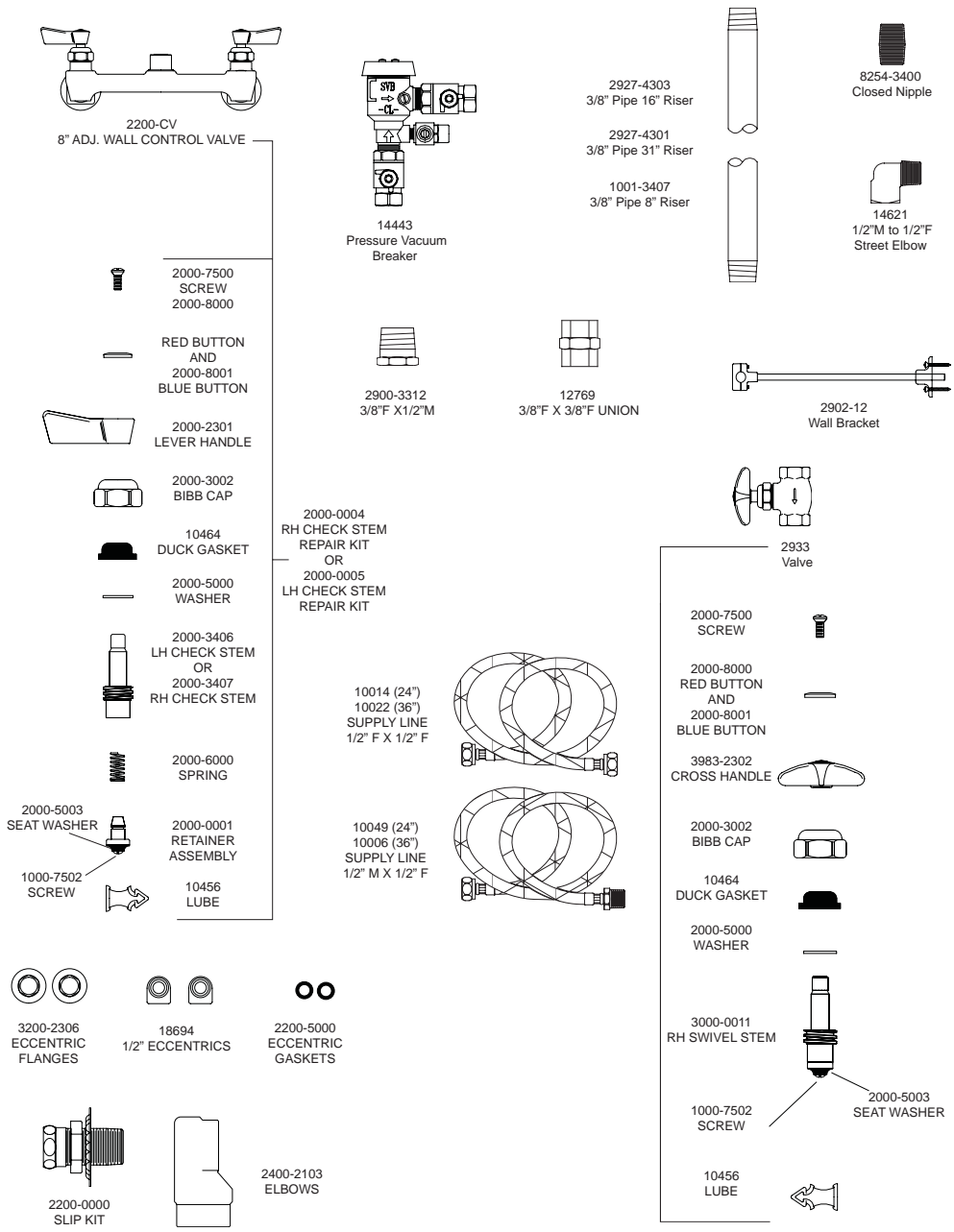


# Replacement Parts for Wall Mounted Reel Rise Installation Kit



## Wall Mounted Reel Rise Installation Kit Product Installation Guide



Since 1936, Fisher Manufacturing Company has manufactured heavy-duty, high quality plumbing products and hardware specialties for the food service industry. For three generations, the Fisher family has adhered to a strict dedication of and overall value. When you install Fisher products... you install the best. Our hardware is manufactured with the standardization of internal mechanisms. All chrome plating is triple plated copper, nickel and chrome for durability. Every piece of equipment we make is rigorously tested in both our modern in-house testing center and in actual field situations under extreme conditions. Every detail is thoroughly checked. Before we make our products available to you, they pass each and every test. You get proven performance. Guaranteed.

Fisher Manufacturing Company warrants its products and parts thereof (except as noted below) against defects in materials or workmanship for a period of one year after the date of original purchase. During this period Fisher Manufacturing Company will replace a defective product or part without charge to you, provided that the entire product is delivered to Fisher Manufacturing Company. All transportation and insurance charges for shipping the product to and from Fisher Manufacturing Company must be borne by you. Charges for transportation and insurance may, at the option of Fisher Manufacturing Company, be refunded depending upon our investigation of the warranty claim. This warranty does not cover external finish (except at date of original purchase) or labor costs not specifically authorized by Fisher Manufacturing Company.



#28231 - Wall mounted Reel Rinse Installation Kit

A full and complete copy of our One Year limited warranty is available upon request.

**WARNING:**  
*Proposition 65 requires that we provide you with the following notice:* "This product Contains A Chemical Known To The State Of California To Cause Birth Defects Or Other Reproductive Harm."

KEEP THIS MANUAL FOR FUTURE REFERENCE



FISHER MANUFACTURING COMPANY - TOLL FREE: 800-421-6162 FAX: 800-832-8238

# Installation Instructions for Wall Mounted Reel Rinse Installation Kit

BE SURE TO CHECK WITH YOUR LOCAL DEPARTMENT HAVING JURISDICTION REGARDING BACKFLOW PREVENTION

## Installation Notes:

- Be sure to shut off water supply before beginning.
- Use pipe thread sealant such as PST on all threaded joints.
- Check the packaging for missing items BEFORE beginning installation. If items are missing, contact your supplier.

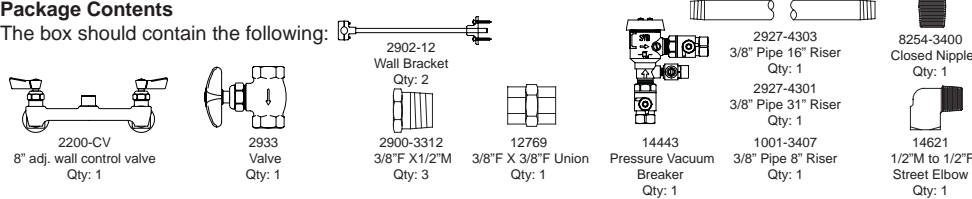
## Tools Required for Installation

- Crescent Wrench
- Pipe Wrench
- Screw Driver
- Pipe Thread Sealant



## Package Contents

The box should contain the following:



## Installation Instructions

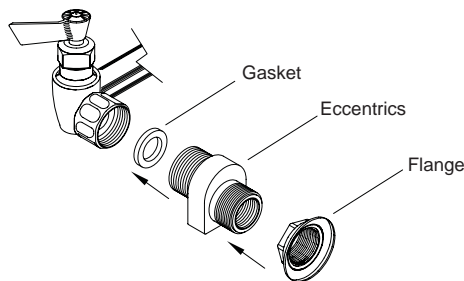
### NOTICE TO PLUMBER:

All Fisher Mixing Faucets are supplied with internal check valves, when required.

To insure long, maintenance free service and efficiency from your Fisher Hose Reel Install Kit, be sure to properly install the Wall Brackets. This prevents the bending of the pipe riser by the operator.

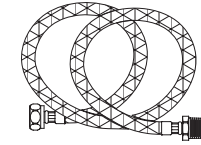
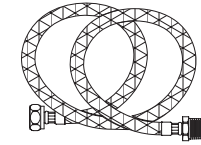
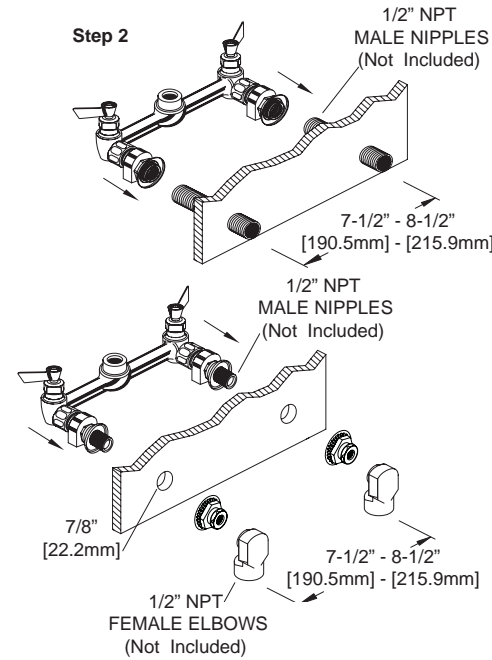
1. After unpacking items and checking for missing components, insert and center the gasket into the female swivel inlets of the 8" control valve body. Loosely mount the eccentrics and flange onto the control valve body.
2. Mount control valve body to wall with a male supply nipples, (not included). Be sure to use pipe thread sealant on the supply nipple threads. Adjust the eccentrics as needed in order to mount the control valve level. Once level, tighten the eccentrics.
3. Install 3/8" Pipe 16" Riser (2927-4303) into 8" adj. Wall mount control valve (2200-CV)\*
4. Install Valve (2933) with Bushing (2900-3312) on each end and attaching it to 3/8" Pipe 16" Riser (2927-4303)\*

### Step 1



# Installation Instructions Continued

### Step 2



Supply Lines (not Included)

### Steps 3 Thru 9

5. Install 3/8" Pipe 31" Riser (2927-4301) and Union (12769) and attaching it to Bushing (2900-3312)\*
6. Install 3/8" Pipe 8" Riser (1001-3407) with Bushing (2900-3312) attaching it to Coupling (12769)\*
7. Install Pressure Vacuum Breaker (14443) attaching it to Bushing (2900-3312)\*
8. Install Close Nipple (8254-3400) by attaching it to Vacuum Breaker (14443)\*
9. Install 1/2" M to 1/2" F Street Elbow (14621) by attaching it to Close Nipple (8254-3400)
10. Hook up the lead line and connect to reel rinse unit, turn water supply on and check for leaks.

\* **NOTE:** Use pipe sealant compound on all joints.

