



## SNO-CONE BLADE ASSEMBLY

### First Remove the Cutting Head (*Caution: Sharp Blades*)

1. Turn off the POWER switch. (Not used on all models.)
2. Unplug the power cord from the electrical outlet.
3. Rotate the cutting head until the set-screws are accessible through the discharge opening located inside the top panel of the storage cabinet.
4. Use a 1/8" hex wrench to loosen the set-screws.
5. Slide the cutting head off the motor shaft and remove the cutting head out of the top side, inlet, of the ice horn.

### BLADE ASSEMBLY

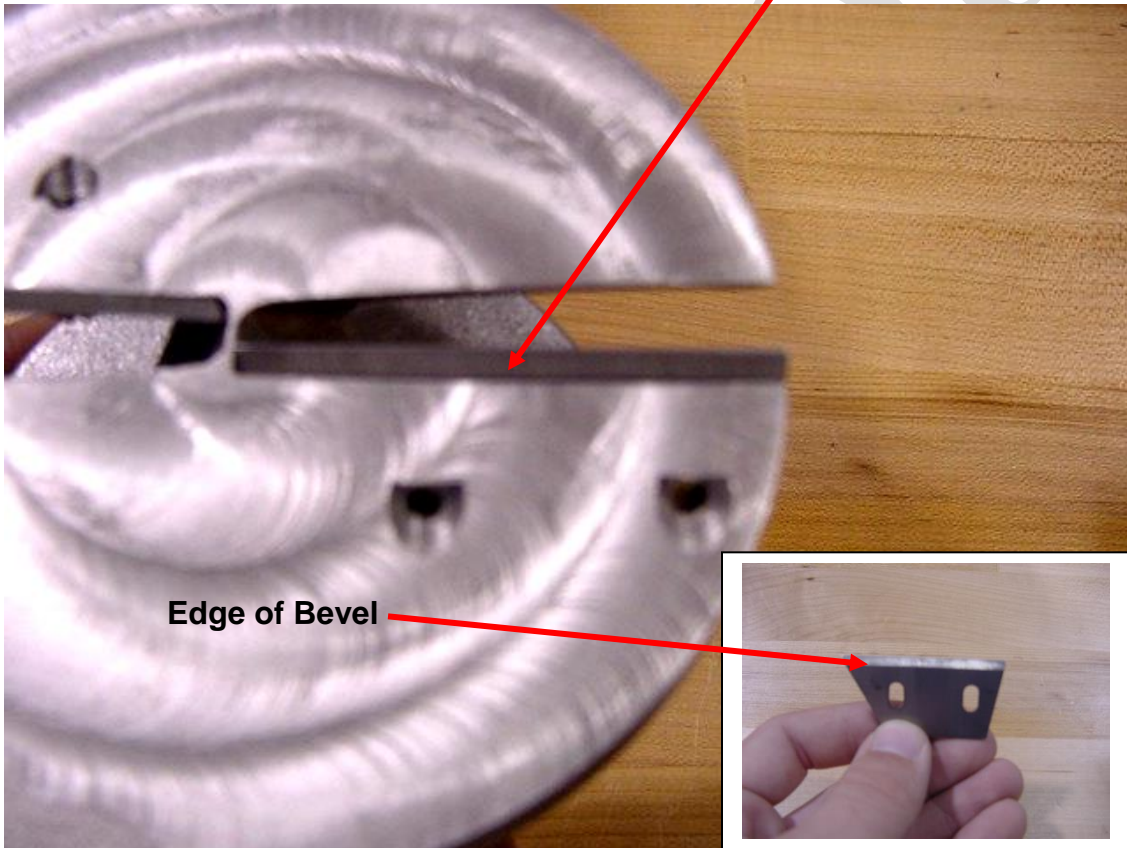
#### Step 1. **Warning "Blade is Sharp"**

Adjust the blade for the type of ice "snow" you wish to produce. Moving the blades out, produces larger grains of ice.

Assemble blades and set screws to chopper

Position the blades on the head with the cutting edge extending between 1/32" to 1/8" out from the cutting head surface. This is the setting that will control your ice granular size.

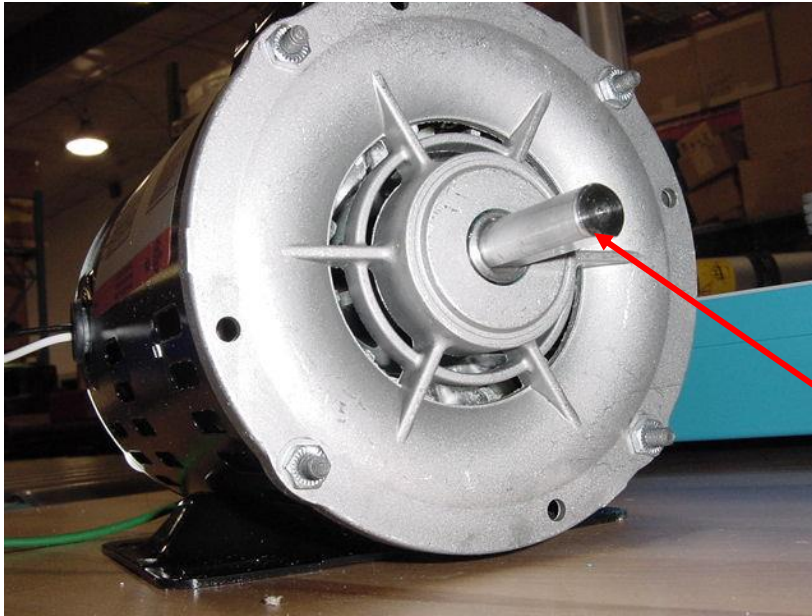
Be sure edge of bevel on blade is flush with face of chopper



## SNO-CONE CHOPPER / MOTOR

### Step 2.

Be sure flat side of motor shaft faces down

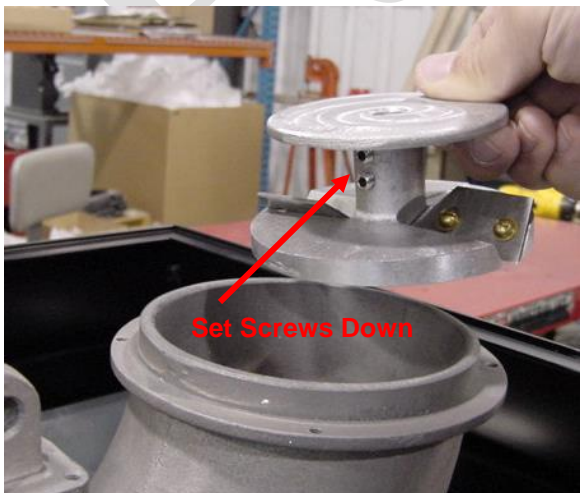


Flat side of shaft  
faces down

### Step 3.

Hold top of chopper with set screws facing down and slide chopper in horn and onto motor shaft

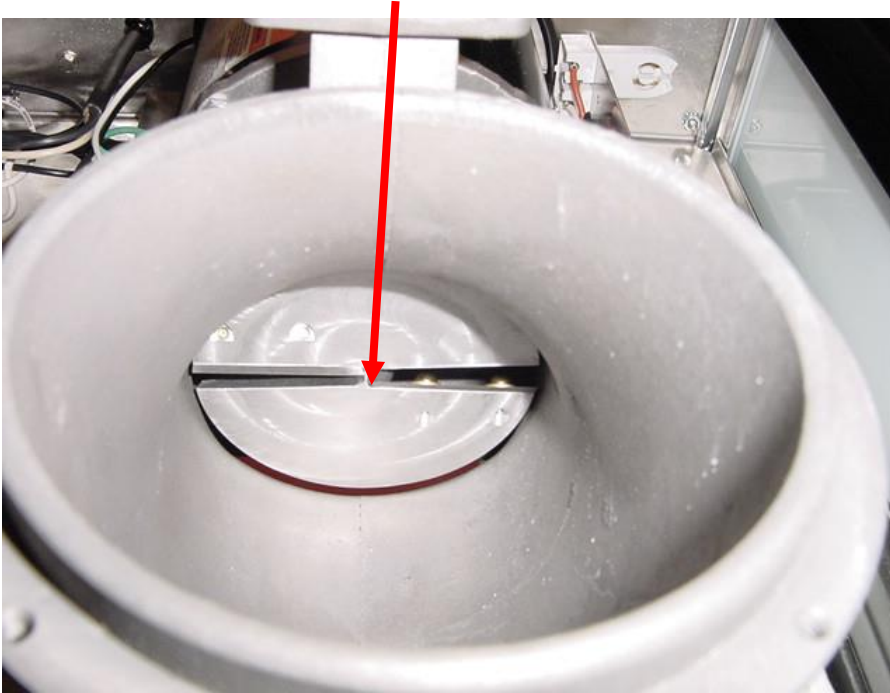
- ✓ Be sure set screws will contact flat side of motor shaft



## SNO-CONE CHOPPER ALIGNMENT

### Step 4.

Be sure chopper is centered in horn before and after tightening motor



1. As the cutting head is slipped onto the motor shaft, align the set screws to the flat location of the motor shaft.
2. Tighten the setscrews with a 1/8" hex wrench.
3. Spin cutting head by hand to insure clearance with horn.
4. Machine is now ready for use.