



BEVERAGE-AIR

| | |
|-----------------|------|
| Project: _____ | AIA# |
| Item: _____ | |
| Location: _____ | SIS# |
| Approved: _____ | |

DW94HC DEEP WELL SERIES: HORIZONTAL BOTTLE COOLERS

HORIZONTAL BOTTLE COOLERS

DW94HC Frosty Brew Deep Well Series
Hydrocarbon Series

MODEL:
DW94HC-S-29



3 Year Parts/Labor Warranty
Additional 4 Year Compressor Warranty

CABINET CONSTRUCTION

- Stainless steel exterior
- Galvanized steel interior and floor
- Full electronic control
- Tops include easy glide, stainless steel lids (4)
- Stainless steel countertop with integral glass stops
- Six (6) epoxy coated adjustable wire dividers
- Bottle opener and cap catcher standard
- Constructed with high cooling RPM fans to provide fast cooling

OPTIONS & ACCESSORIES

- Stainless steel interior
- Wire divider
- Lid locks
- 3" Casters or 6" adjustable leg with plate
- Remote option* (see note on back on page)

REFRIGERATION SYSTEM

- Refrigeration system uses R290 refrigerant to comply with all environmental concerns
- Automatic, non-electric defrost
- Epoxy coated evaporator coil
- Forced air refrigeration system holds product between 30°-32°F




Please verify qualifying units by visiting:
www.energystar.gov/cfs

3779 Champion Blvd., Winston-Salem, NC 27105
1-888-845-9800 Fax: 1-336-245-6453
Beverage-Air.com Sales@bevair.com



BEVERAGE-AIR

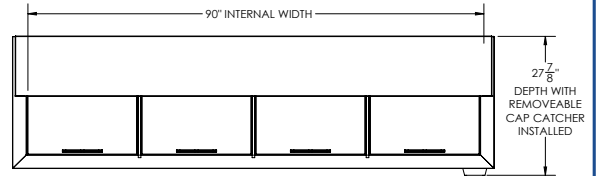


Horizontal Bottle Coolers - Deep Well Model: DW94HC-S-29

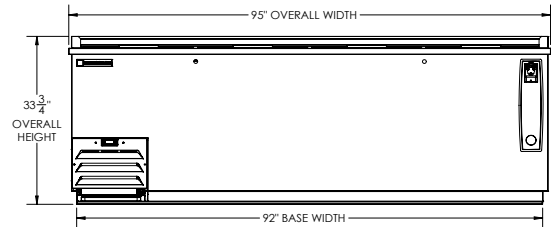
| MODEL | | DW94HC-S-29 |
|--------------------------------------|--|--------------|
| EXTERNAL DIMENSIONAL DATA | | |
| Width Overall | | 95" |
| Depth Overall | | 26 5/8" |
| Depth Overall with Cap Catcher | | 27 7/8" |
| Height Overall | | 33 3/4" |
| Number of Lids | | 4 |
| INTERNAL DIMENSIONAL DATA | | |
| NET Capacity (cubic ft.) | | 28.63 |
| Internal Width Overall (in) | | 90" |
| Internal Depth Overall (in) | | 22 3/4" |
| Internal Height Overall at Step (in) | | 16 3/4" |
| Internal Height Overall (in) | | 26 3/4" |
| Number of Dividers | | 6 |
| 12 oz. Bottle Capacity | | 39 Cases |
| 12 oz. Can Capacity | | 55 1/4 Cases |
| ELECTRICAL DATA | | |
| Full Load Amperes | | 2.5 |
| REFRIGERATION DATA | | |
| Horsepower | | 1/4 |
| Capacity (BTU/Hr) | | 1702 |
| Heat Rejection (BTU/Hr) | | 2553 |
| Charge (lbs/grams) | | 0.2094/95 |
| SHIPPING DATA | | |
| Gross Weight - Crated | | 468 lbs |
| Height - Crated | | 41" |
| Width - Crated | | 98" |
| Depth - Crated | | 29" |

*NOTE: Remote units are field wired and come with 6" legs.
Refrigerant must be specified at time of order.

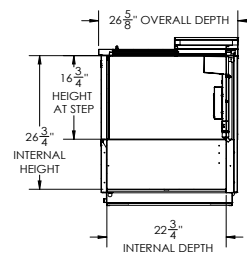
Model Views



PLAN VIEW



ELEVATION VIEW



SIDE VIEW

ELECTRICAL CONNECTION



115/60/1
NEMA 5-15P

Unit pre-wired at factory and include 8' long cord and plug set.



3779 Champion Blvd., Winston-Salem, NC 27105 1-888-845-9800 Fax: 1-336-245-6453 Beverage-Air.com Sales@bevair.com

an Ali Group Company



The Spirit of Excellence