



# BEVERAGE-AIR®

**VUEMAX™**  
**REDESIGNED**  
**OPEN AIR MERCHANDISERS**



**NOW WITH R290 REFRIGERANT,  
DEEP 17-INCH SHELVES, AND  
A BRAND NEW SLIM MODEL**

## NOW FEATURING R290 REFRIGERANT & DEEPER SHELVES

**Shelf depth increased to 17-inches**  
up from previous design's 13.5 inches

**Heavy duty steel exterior**  
with a durable paint finish

**Glass sides enhance product visibility**  
from side viewpoints

**Foamed in place CFC-free polyurethane**  
insulation enhances the structural strength of the cabinet and increases energy efficiency

**LED lighting**  
enhances product illumination  
for maximum product visibility

**Shelving display flexibility**  
Shelves can be installed in two positions

**Full electronic temperature control**  
from 36°-40°F, with display

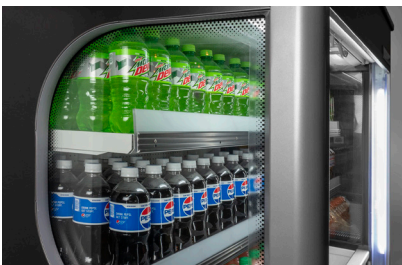
**Certified for bottled beverage  
& packaged foods**

**Night curtain**

**Stylish impact bumper**  
(not available on Slim model)

**3 year parts & labor warranty with  
an additional 4 year compressor warranty**

**Featuring environmentally friendly  
energy-efficient R290 refrigerant**



**SIDE SHIELD**  
to maximize product display

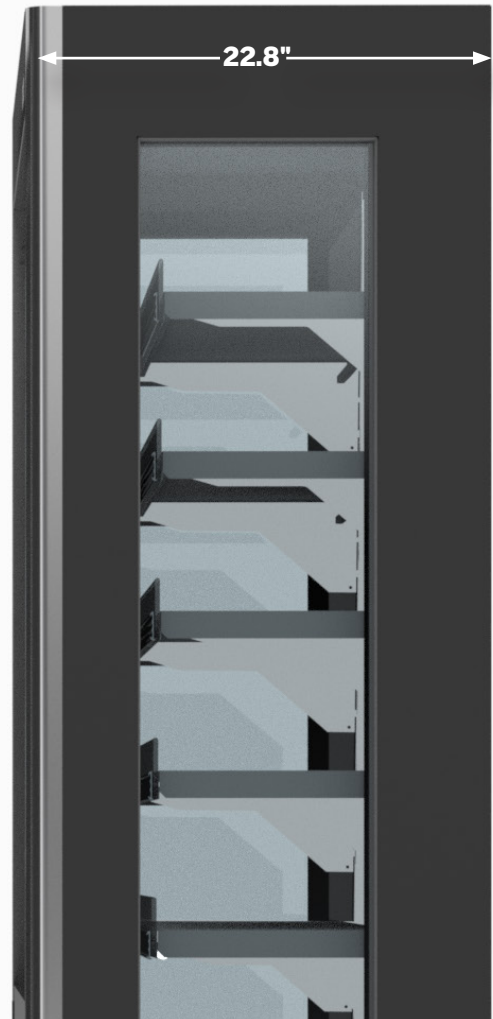


**CUSTOM GRAPHICS AVAILABLE**  
for brand or product promotion

**IDEAL FOR GOURMET SHOPS,  
DELICATESSENS, BAKERIES,  
AND CONVENIENCE STORES**

**NEW SLIM MODEL  
VMHCSL-18**

**A SIGNIFICANTLY MORE SHALLOW FOOTPRINT  
WITH THE SAME CUBIC CAPACITY AND SHELF SPACE**



**EXTERIOR FINISHES**

- Black wrap over stainless steel
- White wrap over stainless steel
- Grey painted stainless steel

**INTERIOR FINISHES**

- White

**AVAILABLE ACCESSORIES**

- Front Product Display
- Wonder Bar - bar/bag hooks
- Product Stop - Price tag molding
- Casters
- Saddle Bag
- Lockable Security Cage
- Clearcool Curtain
- Custom graphics available

**MOUNTING OPTIONS**

- 6" adjustable legs (standard)
- 5" casters



**REFRIGERATORS**

MAINTAINS PRODUCT TEMPERATURES OF 36-38°F.

MODEL WIDTH	MODEL #	SHELVES	VOLTS	HP	AMPS	CUBIC FEET	WIDTH	DEPTH	HEIGHT	CRATED WEIGHT
<b>35"</b>	<b>VMHC-7-1</b>	3	120	1/3	7.5	9.58	34.8	31.7	59.3	433
	<b>VMHC-12-1</b>	5	120	(2) 1/4	10	15.45	34.8	31.7	78.8	524
<b>51.5"</b>	<b>VMHC-18-1</b>	5	120	(2) 1/3	16	23.87	51.5	31.7	78.8	652

**SLIM MODEL**

MAINTAINS PRODUCT TEMPERATURES OF 36-38°F.

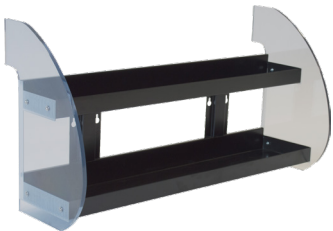
MODEL WIDTH	MODEL #	SHELVES	VOLTS	HP	AMPS	CUBIC FEET	WIDTH	DEPTH	HEIGHT	CRATED WEIGHT
<b>47.3"</b>	<b>VMHCSL-18</b>	5	127	1/3	12	23	47.3	22.8	80.5	465



# VueMax<sup>®</sup> Accessories

**Front Product Display**

Available for VM-7, VM-12, and VM-18


**Wonder Bar**

 Available for VM-7, VM-12, and VM-18.  
 Can be adjusted for the VM-18 SLIM

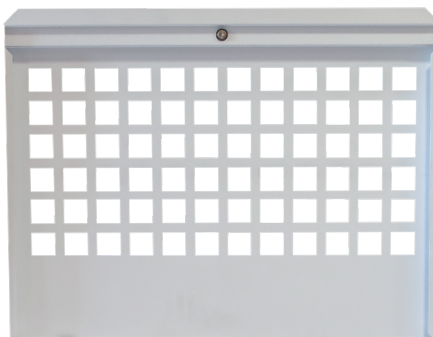
**Product Stop**

Available for all units


**Casters**

Available for all units


**Saddle Bag**

 Available for VM-7 (with 4 shelves),  
 VM-12 (with 7 shelves),  
 and VM-18 (with 7 shelves).

**Lockable Security Cage**

Available for VM-7, VM-12, and VM-18


**Clearcool Curtain**

Available for VM-7, VM-12, and VM-18

VM4P-20210324

an Ali Group Company



The Spirit of Excellence