

COOK & HOLD SMOKER OVENS | ALTO-SHAAM.



# Solutions that advance your business.

When you're faced with challenges, trust Alto-Shaam to deliver solutions and support when and where you need it. Our equipment systems are designed to add value to your business, helping create superior food experiences that drive long-term profitability. We pioneer equipment that is intuitive and dependable—giving you the confidence and support you need to embrace changes in rapidly evolving markets.

With headquarters and manufacturing in Menomonee Falls, Wisconsin, Alto-Shaam proudly provides foodservice equipment solutions made in the USA to more than 90 countries globally.



"We cook our brisket overnight so that it is ready in the morning. We can easily hold it in the Alto-Shaam for 12 hours right through to evening service. We don't have to worry about losing yield; [the brisket] maintains a good size, staying warm and full of flavor."

**Rick Palesh**

Owner / Twelve Boar

See Rick's full story and more at:  
[alto-shaam.com/success](https://alto-shaam.com/success)

## OUR STORY

### 1960s

**Jerry Maahs**, founder, seeking a way to keep fried chicken hot for delivery during Wisconsin winters, uses thermal cables to create innovative holding cabinets. Halo Heat® debuts at the 1968 National Restaurant Association Show.



### 1990s

Evolving into a forward-thinking company that offers complete kitchen systems results in dramatic growth and expansion, performing installations everywhere, from cruise lines to Antarctica.



### 1970s

What began as an experiment with the overnight cooking of prime rib leads to the creation of an entirely new category of commercial kitchen equipment: **Cook & Hold ovens with exclusive Halo Heat® technology.**

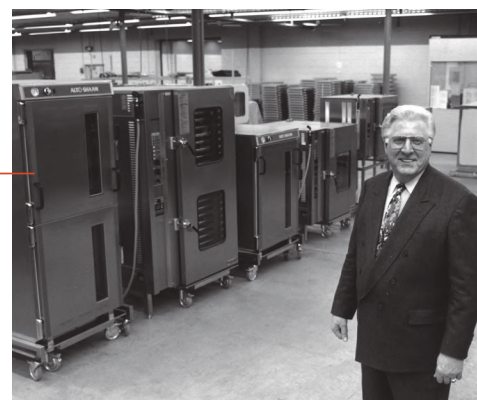


### 2010s

Recognizing the industrychanging potential of Structured Air Technology®, Alto-Shaam partners with Phil McKee, founder and CEO of Appliance Innovation, to develop the revolutionary line of **Vector® Multi-Cook Ovens.**

### 1980s

Seeing a growing need for modern kitchens to become ever more versatile and efficient, Alto-Shaam fills that need with the groundbreaking **Combitherm® oven.**



### 2020s

Alto-Shaam introduces Vector® Multi-Cook Ovens, Cook & Hold Ovens and Smoker Ovens with a new enhanced design, advanced control and a cloud-based remote oven management system, **ChefLinc™.**



# Innovation meets imagination.

Introduce unique tastes to your menu simply. Alto-Shaam Cook & Hold Smoker Ovens provide an effortless way to utilize a time-honored technique that infuses bold flavor into food without artificial flavors, added sodium, fats or sugar.

Better yet, Cook & Hold Smoker Ovens enable you to add signature dishes without paying a premium for pre-smoked food, which can cost up to twice as much.

The key is Alto-Shaam's innovative Halo Heat® technology. Unlike traditional smoking equipment that is labor intensive and leaves meat dry and overcooked, Cook & Hold Smoker Ovens with Halo Heat® technology ensure that the final product comes out full of bold flavor and naturally tenderized — with minimal protein shrinkage.

Slowly cooking food with precision in an Alto-Shaam Cook & Hold Smoker allows you to set the smoke flavor intensity in a controlled manner. Elevate ordinary ingredients with hot or cold smoking — taking your imagination and menu to new heights..

## Labor-free smoking paired with exclusive Halo Heat® technology

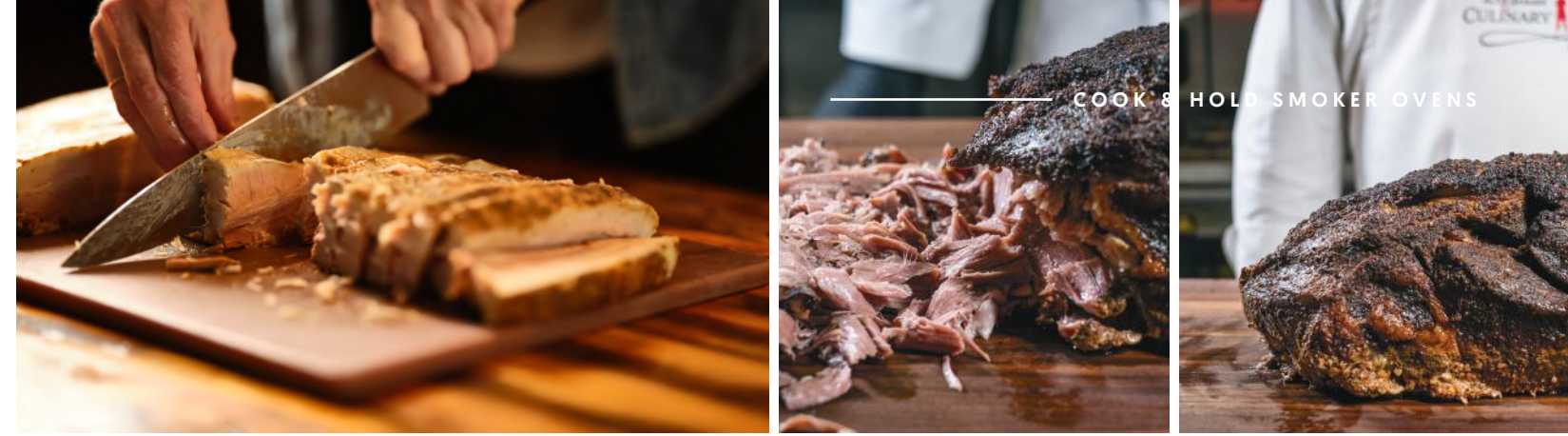
Fanless, waterless Halo Heat® technology eliminates forced air and harsh heating that degrades food quality by overcooking and drying out food.

Gentle, radiant heat provides greater yields compared to pit barbecues, pellet grills and conventional smoking methods.



A sealed, static smoking and cooking environment traps meat's natural flavor and juices — reducing shrink, improving food quality, enhancing smoke flavor and extending hold times.

Pair Halo Heat® technology with real wood chips to create authentic flavor profiles.



# Infuse your operation with bold flavor, higher yields and better food quality.

Featuring game changing Halo Heat® technology, Alto-Shaam Cook & Hold Smoker Ovens are designed to give your operation new capabilities and help you create unique flavor profiles. But that's only half the story. A unique array of features can help you keep customers coming back for more while achieving higher yields, better food quality and maximizing profits.

## COST SAVINGS

### Greater Yields and Less Food Waste.

Minimize food costs with 15-20% less protein shrinkage compared to conventional smoking. Serve more portions from the same cut of meat to increase your profit margin.

### Natural Meat Tenderization.

Halo Heat technology activates natural enzymes for a more moist, tender product. Make the most of less expensive, underutilized cuts of meat and produce a better quality product— all at a lower cost. One hour in the Cook & Hold Smoker Oven is equivalent to 1-2 days of dry aging.

### Maintain Food Quality.

Keep smoked product at its perfect serving temperature and hold for hours without overcooking or drying out.

### Increase Productivity.

Provide a better distribution of workloads and relieve multiple pieces of equipment. Smoke, cook and hold in the same cabinet with set-and-forget controls.

### Labor-Free Smoking.

Utilize overnight smoking, cooking and holding to better allocate labor and equipment where needed. Reclaim 12-16 hours of nonproductive time.

### Waterless Design.

Reduce installation and operating costs with no plumbing, drains, filtration or associated maintenance.

### Infuse Bold Flavor.

No added sodium, fats or sugars. No pressure-cooking. No artificial smoke flavor and associated costs.

### Energy and Cost Savings.

Powered by gentle, efficient Halo Heat® technology, Cook & Hold Smoker Ovens cost less than \$2 per day to operate.

## PURPOSEFUL DESIGN

### Fully-Integrated Smoker.

Utilize real wood chips for a natural, authentic wood flavor. Choose from hickory, apple, cherry or maple.

### Removable Food Probes.

Designed to improve safety and be easily replaced, removable probes provide greater reliability and reduce oven downtime and repair costs. Up to six probes available per chamber in deluxe control models.

### In-Door Lighting.

Put product on display with a glass door option and in-door, adjustable LED lighting.

### Smoke Hot or Cold.

Expand your menu. Hot smoke chicken, beef, pork and more. Cold smoke cheese, nuts, fish, vegetables and more.

### Easy to Operate.

Cook by time or temperature probe with simple or deluxe controls. The oven senses internal product temperature or time and automatically converts from cook mode to hold mode once set parameters have been reached.

### Remote Oven Management.

**ChefLinc™** features an easy-to-use dashboard to streamline processes, reduce labor and maximize profits. Seamlessly push and pull recipes with a recipe management system. Empower your foodservice operation with data-driven insights, oven monitoring, service support and more.

### Easy to Clean.

Simply remove shelves and wipe clean. No moving parts or added water in the oven makes oven cleaning effortless.

### HACCP Compliance Made Easy.

No need to manually log temperatures each hour. Data logger automatically tracks food temperature readings and operation mode by date and time — all downloadable onto a USB flash drive.

### SureTemp™ Heat Recovery.

Assure immediate thermal compensation for any heat loss whenever the door is opened. An audible reminder sounds if the door is left open for more than three minutes.



**767-SK CLASSIC SMOKER OVEN**

**MAXIMUM PAN CAPACITY\***  
9 Full-Size Hotel Pans x 2-1/2"  
9 GN 1/1 Pans

\* Additional shelves required

**VOLTAGES**  
120V, 1Ph, 60Hz  
208V–240V, 1Ph, 60Hz

**DIMENSIONS H x W x D**  
33-3/8" x 26-5/8" x 31-5/8"  
[848mm x 676mm x 802mm]

**SHIPPING WEIGHT**  
265 lb [120kg]

**NET WEIGHT**  
197 lb [89kg]

**PRODUCT CAPACITY**  
100 lb [45kg]



**750-SK SMOKER OVEN** (Shown with glass door - optional)

**MAXIMUM PAN CAPACITY\***  
9 Full-Size Hotel Pans x 2-1/2" or  
18 Half-Size Hotel Pans x 2-1/2"

9 GN 1/1 Pans x 64mm or  
18 GN 1/2 Pans x 64mm

\* Additional shelves required

**VOLTAGES**  
120V, 1Ph, 60Hz  
208V–240V, 1Ph, 50/60Hz

**DIMENSIONS H x W x D**  
33-5/16" x 25-11/16" x 33-1/2"  
[846mm x 653mm x 851mm]

**SHIPPING WEIGHT**  
290 lb [131kg]

**NET WEIGHT**  
225 lb [102kg]

**PRODUCT CAPACITY**  
100 lb [45kg]

**chefline** enabled  
Also available with simple control.



**1000-SK-II CLASSIC SMOKER OVEN**

**MAXIMUM PAN CAPACITY**  
3 Full-Size Hotel Pans 2-1/2"\* or  
3 GN 1/1 Pans x 64mm

\* Additional shelves required

**VOLTAGES**  
208V, 1Ph, 60Hz  
240V, 1Ph, 60Hz

**DIMENSIONS H x W x D**  
40-3/16" x 23-1/2" x 31-5/8"  
[1021mm x 597mm x 802mm]

**SHIPPING WEIGHT**  
282 lb [101kg]

**NET WEIGHT**  
203 lb [92kg]

**PRODUCT CAPACITY**  
120 lb [54kg]



**1000-SK SMOKER OVEN**

**MAXIMUM PAN CAPACITY\***  
7 Full-Size Hotel Pans x 2-1/2" or  
14 Half-Size Hotel Pans x 2-1/2"  
on wire shelves or

7 GN 1/1 Pans x 64mm or  
14 GN 1/2 Pans x 64mm

\* Additional shelves required

**VOLTAGES**  
120V, 1Ph, 60Hz  
208V–240V, 1Ph, 50/60Hz

**DIMENSIONS H x W x D**  
40-1/8" x 22-9/16" x 33-1/2"  
[1019mm x 573mm x 851mm]

**SHIPPING WEIGHT**  
315 lb [143kg]

**NET WEIGHT**  
250 lb [113kg]

**PRODUCT CAPACITY**  
120 lb [54kg]

**chefline** enabled  
Also available with simple control.

**Pan Dimensions**

**FULL-SIZE HOTEL PANS (GN 1/1):** 20" x 12"    **HALF-SIZE HOTEL PANS (GN 1/2):** 12" x 10"    **GN 2/3 PAN:** 354mm x 325mm  
**FULL-SIZE SHEET PANS:** 18" x 26"    **HALF-SIZE SHEET PANS:** 18" x 13"

The specifications in this catalog are for basic information only. Refer to individual unit specification sheets for more details and configuration options.



**1000-SK-I CLASSIC SMOKER OVEN**

**MAXIMUM PAN CAPACITY**  
(PER COMPARTMENT)  
3 Full-Size Hotel Pans\* x 2-1/2" or  
2 GN 1/1 Pans\* x 64mm

\* Additional shelves required

**VOLTAGES**  
208V, 1Ph, 60Hz  
240V, 1Ph, 60Hz

**DIMENSIONS H x W x D**  
75-5/8" x 23-15/16" x 32-1/4"  
[1920mm x 608mm x 819mm]

**SHIPPING WEIGHT**  
445 lb [202kg]

**NET WEIGHT**  
377 lb [171kg]

**PRODUCT CAPACITY**  
120 lb [54kg] per compartment



**1200-SK SMOKER OVEN**

**MAXIMUM PAN CAPACITY \***  
(PER COMPARTMENT)  
7 Full-Size Hotel Pans x 2-1/2"  
on wire shelves only or  
7 GN 1/1 Pans x 64mm

\* Additional shelves required

**VOLTAGES**  
208–240V, 1Ph, 60Hz

**DIMENSIONS H x W x D**  
70-5/8" x 22-9/16" x 33-1/4"  
[1795mm x 573mm x 845mm]

**SHIPPING WEIGHT**  
515 lb [234kg]

**NET WEIGHT**  
450 lb [188kg]

**PRODUCT CAPACITY**  
120 lb [54kg] per compartment

**chefline** enabled  
Also available with simple control.



**1767-SK CLASSIC SMOKER OVEN**

**MAXIMUM PAN CAPACITY\***  
(PER COMPARTMENT)  
9 Full-Size Hotel Pans x 2-1/2"  
9 GN 1/1 Pans x 64mm

\* Additional shelves required

**VOLTAGES**  
208V, 1Ph, 60Hz  
240V, 1Ph, 60Hz

**DIMENSIONS H x W x D**  
61-15/16" x 27-1/16" x 32-3/4"  
[1572mm x 686mm x 832mm]

**SHIPPING WEIGHT**  
450 lb [204kg]

**NET WEIGHT**  
356 lb [161kg]

**PRODUCT CAPACITY**  
100 lb [45kg] per compartment



**1750-SK SMOKER OVEN**

**MAXIMUM PAN CAPACITY\***  
(PER COMPARTMENT)  
9 Full-Size Hotel Pans x 2-1/2"  
9 GN 1/1 Pans x 64mm

\* Additional shelves required

**VOLTAGES**  
208–240V, 1Ph, 60Hz

**DIMENSIONS H x W x D**  
56-1/2" x 25-11/16" x 33-1/16"  
[1435mm x 653mm x 840mm]

**SHIPPING WEIGHT**  
502 lb [228kg]

**NET WEIGHT**  
437 lb [198kg]

**PRODUCT CAPACITY**  
100 lb [45kg] per compartment

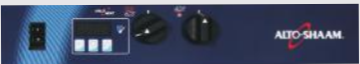
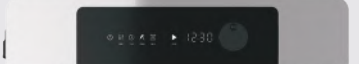

**chefline** enabled  
Also available with simple control.

**Pan Dimensions**

**FULL-SIZE HOTEL PANS (GN 1/1):** 20" x 12"    **HALF-SIZE HOTEL PANS (GN 1/2):** 12" x 10"    **GN 2/3 PAN:** 354mm x 325mm  
**FULL-SIZE SHEET PANS:** 18" x 26"    **HALF-SIZE SHEET PANS:** 18" x 13"

The specifications in this catalog are for basic information only. Refer to individual unit specification sheets for more details and configuration options.

## Control Overview

<b>CLASSIC</b> 767-SK, 1000-SK/II, 1000-SK/I, 1767-SK 	<b>SIMPLE</b> 750-SK SX, 1000-SK SX, 1200-SK SX, 1750-SK SX 	<b>DELUXE</b> 750-SK DX, 1000-SK DX, 1200-SK DX, 1750-SK DX 
<ul style="list-style-type: none"> <li>- Knobs and push button control</li> <li>- Arrows to set cook and hold times</li> <li>- Digital display</li> <li>- Indicator lights</li> <li>- Manual (smoking), cooking and holding</li> </ul>	<ul style="list-style-type: none"> <li>- Intuitive, icon-based control</li> <li>- Single knob</li> <li>- One (1) probe standard per chamber</li> <li>- Save up to eight (8) recipes per chamber</li> <li>- Cook and hold by probe standard</li> <li>- Preheat temperature same as cook temperature</li> <li>- Cook log with min/max temps standard</li> <li>- HACCP data collection optional</li> <li>- Information upload/download via USB</li> <li>- Screen lock</li> <li>- Icon descriptions available in multiple languages</li> </ul>	<ul style="list-style-type: none"> <li>- Advanced, touchscreen control</li> <li>- One (1) probe standard per chamber</li> <li>- Up to six (6) probes available per chamber</li> <li>- Save unlimited recipes</li> <li>- Cook and hold by probe standard</li> <li>- Preheat temperature separate from cook temperature</li> <li>- Multiple cook stages available</li> <li>- HACCP data collection standard</li> <li>- Information upload/download via USB</li> <li>- Various locking functionality</li> <li>- Control available in multiple languages</li> <li>- Recipe search</li> <li>- Recipe file categorization/filtering</li> <li>- Include pictures with recipe settings</li> <li>- SureTemp™ heat recovery</li> <li>- Lighted chamber</li> </ul> <p><b>Network capability via chef<i>flinc</i> remote oven management system</b></p> <ul style="list-style-type: none"> <li>- Manage ovens remotely with an easy-to-use dashboard</li> <li>- Stay connected with real-time oven status and alerts</li> <li>- Push and pull recipes and oven settings</li> <li>- Record, monitor and store data</li> <li>- View reports to draw business insights and more</li> </ul>



# A partner **you can rely on.**

At Alto-Shaam we're relentlessly driven to design and manufacture products that perform flawlessly in the most demanding conditions to give operators confidence and consistency in every meal. And our team is just as committed to providing industry-leading service and support. From installation consultation to equipment training to around the clock, every day technical assistance to culinary support—you can trust that we are here for you.



**ALTO-SHAAM.**

Menomonee Falls, WI U.S.A.

Phone 800-558-8744 | +1-262-251-3800 | alto-shaam.com

## Full Line Commercial Kitchen Equipment:

- Combitherm® Ovens
- Cook & Hold Ovens
- Food Wells
- Heated Holding
- Smokers
- Quickchillers™
- Rotisseries
- Thermal Shelves & Carving Stations
- Merchandisers & Display Cases
- Vector® Multi-Cook Ovens

### ASIA

Shanghai, China  
Phone +86-21-6173-0336

### AUSTRALIA

Brisbane, Queensland  
Phone 800-558-8744

### CANADA

Concord, Ontario Canada  
Toll Free Phone 866-577-4484  
Phone +1-905-660-6781

### FRANCE

Aix en Provence, France  
Phone +33(0)4-88-78-21-73

### GMBH

Bochum, Germany  
Phone +49 (0)234 298798-0

### ITALY

Padua, Italy  
Phone +39 3476073504

### INDIA

Pune, India  
Phone +91 9657516999

### MEXICO

Phone +1 (954) 655-5727

### MIDDLE EAST & AFRICA

Dubai, UAE  
Phone +971-4-321-9712

### CENTRAL & SOUTH AMERICA

Miami, FL USA  
Phone +1 (954) 655-5727

### RUSSIA

Moscow, Russia  
Phone +7 903 7932331



ALTO-SHAAM®