

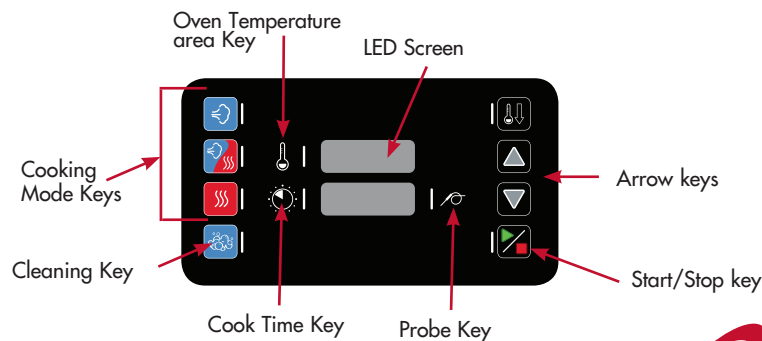
### Turn on and preheat the oven

Alto-Shaam recommends preheating the Combitherm® before cooking.

- Press the **Power** key. or Green light will appear while oven is booting up.
- Choose a **Mode**. Steam Combi Convection
- Press **Oven Temperature** key.
- Adjust temperature with arrow keys.
- Press **Cook Time** key.
- Adjust time with arrow keys.
- Press the **Start/Stop** key.
- Preheat oven before loading food.

### To cook manually by probe

- Choose a **Mode**. Steam Combi Convection
- Press the **Oven Temperature** key; adjust temperature with arrow keys.
- Press the **Probe Temperature** key; adjust temperature using the arrow keys.
- Load food into oven and insert probe into food.
- Press the **Start/Stop** key.



### To cook manually by time

- Choose a **Mode**. Steam Combi Convection
- Press the **Oven Temperature** key; adjust temperature with arrow keys.
- Press the **Cook Time** key; adjust time using the arrow keys.
- Load food into oven.
- Press the **Start/Stop** key.

### To clean the oven

- Press the **Cleaning** key.
- Insert appropriate number of CombiClean® tabs as directed by the LED Screen (CLn4 appears).
- Close the oven door and press the **Start/Stop** key.
- If oven is too hot to proceed, **dOOr** will display on the LED screen. Open the oven door to allow the oven to cool. When the oven is finished cooling, begin the cleaning procedure again.
- Oven beeps when it is done cleaning. Leave door slightly ajar when cleaning is finished.

**NOTE:** TO SHUT THE OVEN OFF, PRESS AND HOLD FOR FIVE SECONDS. THE RED LIGHT WILL APPEAR INDICATING THAT THE OVEN WILL BEGIN THE SHUT DOWN PROCESS.

TO FORCE SHUT DOWN IN THE RARE EVENT THE CONTROL LOCKS UP, PRESS AND HOLD FOR TEN SECONDS.

