

Royal Series Underbar Accessories



Bottle Wells for Ice Bins

- KR19 overall flange size: 16"L x 6-3/4"W
- KR24 overall flange size: 21-1/8"L x 6-3/4"W
- Built-in rail for optional sliding cover
- Raised floor to keep bottles dry
- Bottles not included

Model	Fits	Wells Included	Bottle Capacity
30-550	19" Depth Ice Bins	1	3
30-502	19" Depth Ice Bins	2	6
C-21	19" Depth Ice Bins	6	18
KR-409	24" Depth Ice Bins	1	4
KR-410	24" Depth Ice Bins	2	8



19" Depth Ice Bin shown with 30-502 bottle wells

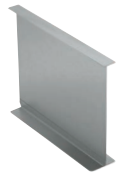


Wire Bottle Racks

- For use in 6" or 12" wide insulated bins
- Holds plastic juice containers or wine bottles
- Bottles not included

Model	Fits	Racks Included	Bottle Capacity
KR-420	19" Depth Ice Bins	1	3
KR-421	19" Depth Ice Bins	2	6
KR-422	24" Depth Ice Bins	1	4
KR-423	24" Depth Ice Bins	2	8

Stainless Steel Dividers for Ice Bins



- 12" or 15" deep

Model	Description
KR-103	12" deep for 19"D Ice Bins
KR-109	12" deep for 24"D Ice Bins
KR-113	15" deep for 19"D Ice Bins
KR-114	15" deep for 24"D Ice Bins

Bottle Opener & Cap Catcher

- 8" x 5-1/2" x 4" overall



Model
KR-401

Stainless Steel Blender Shelf

- 10" front to back



Model
C-9

Stainless Steel False Bottoms



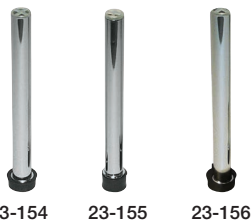
Model	Description
C-34	24" Ice Bins
C-35	Other Sizes

Towel Ring



Model
KR-501

Overflow Pipes



Model	Size	Height
23-154	1"	8"
23-155	1-1/4"	8"
23-156	1-1/2"	8-1/2"

Countertop Condiment Tray

- 6 removable cups
- Transparent flip-top lid
- 22"L x 7"D
- Replacement plastic pint containers available (KR-101-C)



Model
KR-101

Garnish Drain

- 10-1/2"L x 5"W x 10"H
- Removable perforated basket
- Drain on bottom



Model
C-31

Replacement Leg Sets & Bullet Feet

- Specify underbar model on order



Model	Description
C-61	Stainless Leg Set (4 pcs.)
29-108	Plastic Bullet Foot
29-101	Stainless Bullet Foot