



ITEM NO. _____
 PROJECT _____
 LOCATION _____
 DATE _____ QTY. _____

KOLD LOCKER™ WALK-IN COOLERS & FREEZERS WITH SELF-CONTAINED REFRIGERATION SYSTEMS

KOLD LOCKER™

Walk-In Coolers & Freezers With Self-Contained Refrigeration Systems



FEATURES

- Cooler or freezer models
 - Sizes from 4' x 6' to 10' x 14'
 - Three heights: 6'7" & 7'7" with floor; 7'4" floorless
 - Indoor or outdoor models
 - Two temperatures: +37°F, -10°F
 - Ceiling mount Capsule Pak refrigeration system (ordered separately)
 - Air-cooled condensing unit
 - LogiTemp™ electronic controller system
 - 26 gauge corrosion resistant stucco embossed coated steel on all surfaces except interior floor
 - Smooth aluminum interior floor (on models with floor)
 - Floorless models supplied with NSF listed vinyl sealers
 - Full 4" thick panels foamed-in-place with EPA-compliant polyurethane insulation
 - 26" wide, self-closing door
 - Heavy duty adjustable cam-lift hinges
 - Spring actuated door closer
 - Deadbolt locking handle with independent key/padlock feature and inside safety release
 - Magnetic gasket
 - Digital thermometer and light switch
 - Floor double sweep gasket
 - Perimeter door heater wire
 - High output low profile LED light positioned above the door to prevent interference with shelving or product
 - UL and C-UL listing on complete Capsule Pak and Capsule Pak ECO refrigeration systems*
 - UL NCKL listed certifying compliant walk-ins are ignition protected
 - NSF listed, UL flame spread 25 or less on all foam cores; UL electrical listing on door sections
 - City of Houston listed
 - California State listed
 - CN UL flame spread listed
 - DOE compliant
 - Oregon State listed
 - USDA accepted
 - 15 year panel warranty
 - 18 months parts & labor warranty
- INDOOR MODELS:
 - Hot gas condensate vaporizer
 - OUTDOOR MODELS:
 - White membrane roof and trim
 - -20°F ambient controls

Equipped with YOUR CHOICE of SELF-CONTAINED Capsule Pak™ refrigeration systems



CAPSULE PAK
 With R449A
 Refrigerant



CAPSULE PAK ECO™
 With R290
 Refrigerant

OPTIONS

(Most options available two weeks from receipt of order. Please contact us for specific questions.)

- Heights: 8'7" with floor, 8'4" without floor
- U-shaped shelving system
- Floor tread plate kit
- Exterior ramp
- Door hood (outdoor models)
- Heater kit for outdoor use with medium temp applications where ambient conditions may go below 32°F
- Leak detector/alarm (may be a requirement in some areas)
- Electric vaporizer (indoor models only)
- Five year compressor warranty

* C-UL is Underwriters Laboratories Safety Certification Mark which indicates that UL has tested the equipment to applicable CSA Standards.



WALK-IN SPECIFICATIONS

Kold Locker walk-ins are built of modular panels and are insulated with foamed-in-place EPA-compliant polyurethane insulation. Each panel is designed to ensure ease of installation, long term reliability and high insulating efficiency.

A. All panels are manufactured with male and female mating rails to ensure proper alignment during installation. The polyurethane insulation wraps around the return bend metal seams on both section to create a lightweight panel of exceptional strength and durability. All panels are a full four (4) inches thick and provide a superior insulating value.

B. The foamed-in-place cam locking fasteners ensure an airtight seal for maximum energy efficiency.

C. Panel gaskets located around the outer perimeter of the panel are continuous, without cuts or breaks at corners. Because gaskets are foamed-in-place as an integral part of the panel, they cannot fall off or pull off during shipment or installation.

D. Panels lock together tightly for an energy efficient walk-in.

E. Edge caps for ends of floor and ceiling panels are foamed-in-place rather than overlapped or mechanically fastened. Edge caps cannot come loose, and they stay in place through the life of the walk-in.

F. Panel Finishes: Interior and exterior panels are fabricated with 26 gauge corrosion resistant stucco embossed coated steel. Models supplied with a floor will include a smooth aluminum interior floor surface.

G. Insulation: Panels are four (4) inches thick, metal clad and foamed-in-place with HFO polyurethane insulation which is HFC free.

The R-values for 4" HFO panels are:

Cooler:

Walls/Ceilings R-value 25

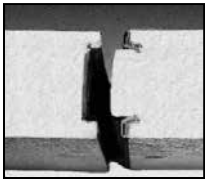
Doors R-value 25

Freezer:

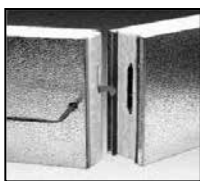
Walls/Ceilings R-value 32

Doors R-value 32

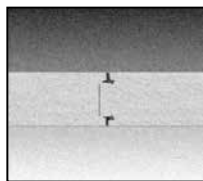
Floors R-value 28



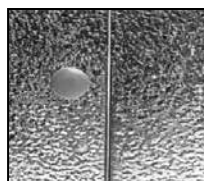
A.



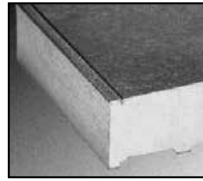
B.



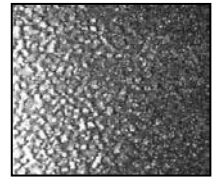
C.



D.



E.



F.

AVAILABLE SIZES

The Standard Series of Kold Locker walk-ins are all 6'-7" high and are all supplied with a floor. The sizes available are as follows: 4' wide x 6' long, 6' wide x 6' long, 6' wide x 8' long, 6' wide x 10' long, 6' wide x 12' long, 8' wide x 8' long, and 8' wide x 10' long.

The 77 Series of Kold Locker walk-ins are all 7'-7" high and are all supplied with a floor. The sizes available are as follows: 6' wide x 6' long, 6' wide x 8' long, 6' wide x 10' long, 6' wide x 12' long, 8' wide x 8' long, and 8' wide x 10' long.

The 74 Series of Kold Locker walk-ins are all 7'-3⁵/₈" high and are all supplied without a floor. Wall panels are installed on top of NSF listed vinyl sealers provided. The sizes available are as follows: 6' wide x 6' long, 6' wide x 8' long, 6' wide x 10' long, 6' wide x 12' long, 8' wide x 8' long, and 8' wide x 10' long.

OUTDOOR MODELS

All Kold Locker walk-ins installed outdoors include a weather protection kit consisting of: One piece, 35 mill, white membrane roof material which requires no seaming or gluing to the top of the Kold Locker walk-in ceiling panels.

Metal trim for flashing the membrane roof material to the side of the Kold Locker walk-in wall panels is included.

Trim is secured to the Kold Locker wall panels with self-drilling and self-tapping TEK screws. In applications where the Kold Locker walk-in is installed next to a building, the trim can be used to secure the turned up membrane roof material to the building wall, with fasteners supplied. Door rain hoods are an option and should be included on installations where the door panels are exposed to the outdoor weather.



KOLD LOCKER™

WALK-IN COOLERS & FREEZERS WITH SELF-CONTAINED REFRIGERATION SYSTEMS

DOOR

Door sections are factory tested to assure proper fit, performance and alignment. All doors feature a stepped profile design that serves as a barrier to air flow which results in an energy efficient door system. Door sections are 4" thick, metal clad and foamed-in-place with EPA-compliant polyurethane insulation.

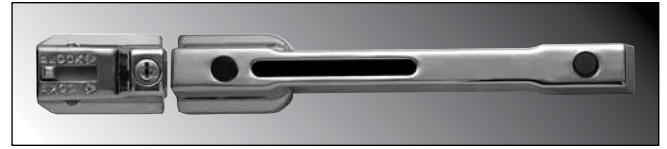
Each Kold Locker walk-in compartment is equipped with a 26" wide door opening. The height of the door opening varies with the series of walk-in ordered. The Standard Series (6'7" high) has a 66" high door opening and the 74 and 77 Series walk-ins have a 78" high door opening. The door is self-closing, flush mounted, infitting and constructed to incorporate heavy duty, molded ABS breaker which is permanently foamed-in-place.

Doors are available with right or left side hinges and include two field adjustable cam-lift hinges with locking set screw, top hinge spring loaded, spring actuated door closer, NL 9800 deadbolt locking handle with independent key/padlock feature and inside safety release. The doors are pre-hung in a four foot wide frame panel which is equipped with replaceable perimeter heater wire, magnetic stainless steel trim, digital thermometer, vapor proof LED light fixture and switch with exterior pilot indicator light.

The door section is completely pre-wired within concealed conduit inside the door frame panel. 120/60/1 electrical is field wired to a junction box which is surface mounted next to the interior frame above the vapor proof LED light fixture.

Hinges and door handle are mounted to 1/2" synthetic insulated tapping plates. Each door section is complete with a fiberglass reinforced plastic heated threshold.

DOOR OPENING SIZE		
W	H	MODEL
26"	66"	STD Series
26"	78"	74 Series
26"	78"	77 Series



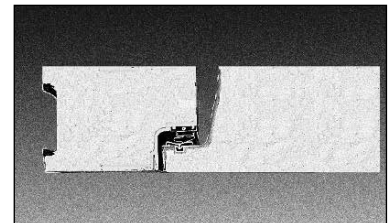
Deadbolt-locking handle



Spring actuated door closer



LED light fixture



Doors feature a stepped profile design



Digital thermometer/light switch

These doors are designed and certified for use in walk-in cooler applications.

DOOR MODEL NUMBER	ENERGY CONSUMPTION (KWH/DAY)	DOOR SURFACE AREA (SQ. FT.)	ELECTRICAL	WATTS	AMPS
KL26X66	2.37	13.40	120/60/1	100.80	0.84
KL26X78	2.49	15.80	120/60/1	106.07	0.88

These doors are designed and certified for use in walk-in freezer applications.

DOOR MODEL NUMBER	ENERGY CONSUMPTION (KWH/DAY)	DOOR SURFACE AREA (SQ. FT.)	ELECTRICAL	WATTS	AMPS
KL26X66	6.68	13.40	120/60/1	196.07	1.63
KL26X78	7.01	15.80	120/60/1	207.07	1.73



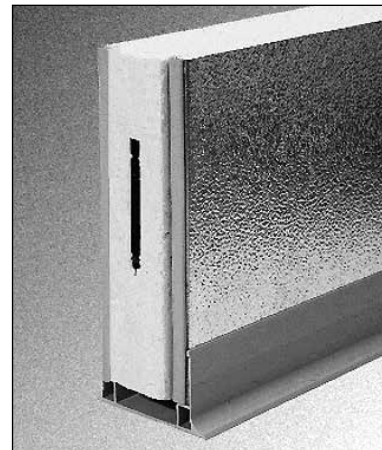
KOLD LOCKER™

WALK-IN COOLERS & FREEZERS WITH SELF-CONTAINED REFRIGERATION SYSTEMS

FLOOR CONSTRUCTION

Floor panels (when supplied) are similar in construction to the wall panels except they are made to withstand uniformly distributed floor loads of up to 800 pounds per square foot. The interior floor metal is smooth aluminum.

The 74 Series, floorless models, are supplied with a patented vinyl floor sealer to stop conductivity at floor level. This unique sealer sits flat on existing floors and fits tightly against the interior/ exterior wall panels. The walk-in wall panel is supported on the shoulder of the sealer so the foam edge is free of compressing weight. The vinyl floor sealer is NSF listed.



Floorless models are supplied with a patented vinyl floor sealer

SHELVING KITS

Shelving kits specifically designed for each Kold Locker walk-in configuration are offered as an optional extra. These kits are shipped with the Kold Locker walk-in and Capsule Pak refrigeration system so that all necessary components are at your location promptly when you need them. The shelving sets are coded to correspond to the Kold Locker walk-in configuration ordered and are offered in either three or four tier.



Shelving system types include Green Kote™ and Chrome Kote™

SHELVING SYSTEM TYPES

A. Green Kote™ Shelving: Electrostatically applied green baked epoxy over zinc steel and brite basic wire. Thickness: 2-3 mill. 15 year guarantee against corrosion.

B. Standard Chrome Kote™ Shelving: Plated quality wire and steel. Surface nickel chrome plated.

Select the shelving finish of your choice. Shelving posts are engineered for maximum strength. Shelves are adjustable on 2" centers. All shelves are NSF listed and are zinc coated with a heavy layer of Protoxy for a maximum life span under humid storage conditions. Special clips are utilized to gain the maximum square footage of storage space for each Kold Locker model. 14", 18" and 24" wide shelves are used as required for maximum storage capacity in each set. This wire shelving is ideal for storage of all refrigerated or frozen products.

SHELVES

Shelves to have #9 (.148") ga. crosswires spaced 3/4" on centers with crossbraces 1/4" (.192") minimum of 4-3/4" on center.

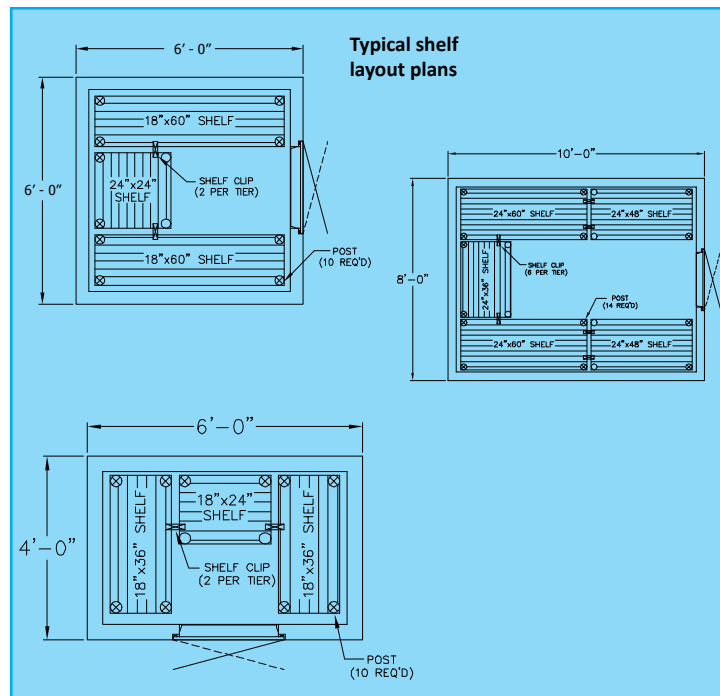
- **Shelf Frames:** Channel to be 9/16" x 1" x .075" thick.
- **Shelf Collars:** A round tapered 1-5/16" high steel collar to be welded at each corner.

POSTS

Posts to be .062" thick 1" O.D. round tubing notched every 2" on each corner of the post.

POST LEVELERS

Installed on the bottom of each post is nylon housing for a steel leveler 3/8"-16 x 1-3/4".



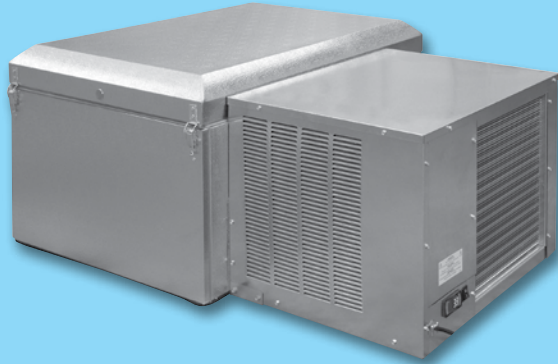


KOLD LOCKER™

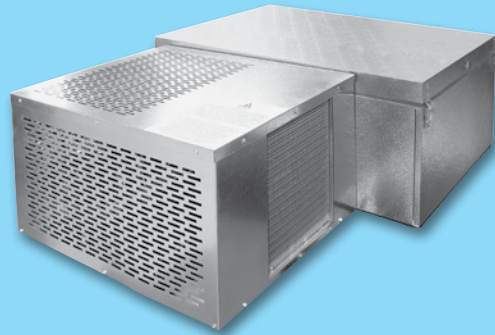
WALK-IN COOLERS & FREEZERS WITH SELF-CONTAINED REFRIGERATION SYSTEMS

STANDARD SELF-CONTAINED REFRIGERATION SYSTEMS

CHOOSE FROM THESE SYSTEM OPTIONS



**CAPSULE PAK™
WITH R449A REFRIGERANT
INDOOR & OUTDOOR MODELS**



**CAPSULE PAK ECO™
WITH R290 NATURAL REFRIGERANT
INDOOR MODELS ONLY**

FEATURE	CAPSULE PAK	CAPSULE PAK ECO
Factory assembled, wired, charged, tested and ready to mount in walk-in ceiling	✓	✓
Indoor and outdoor models	✓	Indoor Only
Available for coolers (+37°F) or freezers (-10°F)	✓	✓
Flush mounted evaporator coil in the walk-in ceiling panel for maximum interior storage space	✓	✓
Standard cord and plug eliminating the need for field electrical connection	✓	✓
Pre-charged with refrigerant eliminating the need for field refrigeration connection	✓	✓
Designed to operate in ambient temperatures up to 100°F	✓	✓
Air cooled condensing unit	✓	✓
LogiTemp™ electronic controller system provides increased reliability, connectivity and food safety	✓	✓
Automatic condensate evaporator (indoor models only)	✓	✓
Electronic control provided for automatic defrost on both coolers and freezers	✓	✓
UL and C-UL electrical listing on complete Capsule Pak refrigeration systems*	✓	✓
AWEF compliant	✓	✓
DOE, CARB and SNAP compliant	✓	✓
-20°F ambient controls (outdoor models)	✓	⊗
Systems for outdoor walk-ins contain a crankcase heater and head master	✓	⊗
18 months parts and labor warranty	✓	✓
Patent pending design	⊗	✓
Optional electric vaporizer (indoor models only)	✓	✓
Optional condensing unit air deflection kit	✓	✓
Optional 5 year compressor warranty	✓	✓

* C-UL is Underwriters Laboratories Safety Certification Mark which indicates that UL has tested the equipment to applicable CSA Standards.

CAPSULE PAK™ & CAPSULE PAK ECO™ REFRIGERATION SYSTEM SPECIFICATIONS

Capsule Pak™ and Capsule Pak ECO™ refrigeration systems consist of a single assembly pre-charged condensing unit and evaporator coil factory assembled, wired, tested and ready for insertion into a factory prepared walk-in ceiling opening.

Capsule Pak and Capsule Pak ECO systems are ceiling mount. A flush evaporator coil keeps all components outside the walk-in storage area allowing more storage inside. Capsule Pak models are available for indoor or outdoor installations while Capsule Pak ECO systems are indoor only. Models are available for interior compartment design temperatures of +35°F and -10°F. Installation is fast and easy with no plumbing required on indoor units.

The evaporator section is designed to be located entirely outside the walk-in with no intrusions into the refrigerated space. The evaporator enclosure is constructed utilizing foamed-in-place polyurethane insulation and equipped with a removable, gasketed access cover. High efficiency EC evaporator fan motors circulate air throughout the walk-in.

Indoor Capsule Pak models are equipped with either a discharge gas condensate vaporizer or an optional electric condensate vaporizer. Outdoor Capsule Pak models are equipped with low ambient controls consisting of crankcase heater and flooded condenser head pressure control. Capsule Pak ECO models incorporate a condensate pan with wicking pads and forced air from the condenser fan to evaporate condensate.

Capsule Pak and Capsule Pak ECO systems are UL and C-UL listed and DOE compliant. Note: Allow minimum of 4" clearance above and 24" on each side of the system for installation. Consideration should be given to accessibility for service and free condenser air flow. Consult factory with installation questions.



Self-contained Capsule Pak and Capsule Pak ECO systems are conveniently located on top of the walk-in to maximize interior storage space. Systems are available for single walk-in compartments.

STANDARD LOGITEMP™ ELECTRONIC CONTROLLER ON ALL CAPSULE PAK™ & CAPSULE PAK ECO™ SYSTEMS


- More precise and reliable temperature control compared to all-mechanical systems
- Digital readout and four button overlay for easy setup and navigation
- Demand Defrost technology that initiates defrosts only as needed for further energy savings (Capsule Pak only)
- LogiTemp provides online data for instant notification of error codes and settings (Capsule Pak only)

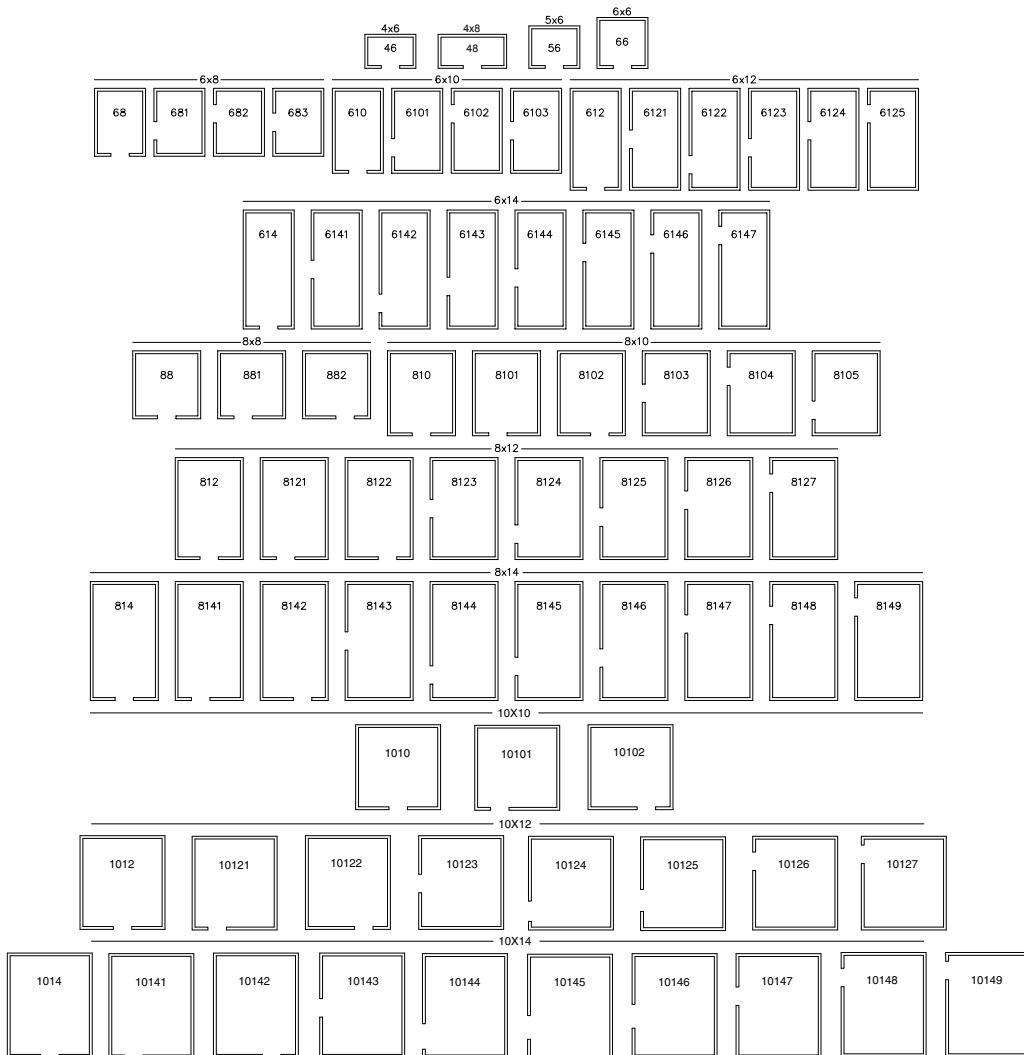


KOLD LOCKER™

WALK-IN COOLERS & FREEZERS WITH SELF-CONTAINED REFRIGERATION SYSTEMS

FLOOR PLAN LAYOUTS FOR SINGLE ROOM COOLERS OR FREEZERS

Model numbers indicate the door location on the standard Kold Locker layouts



PHYSICAL SPECIFICATIONS

6'7" HIGH		7'4" HIGH & 7'7" HIGH	
MODEL	CAPACITY CU. FT.	MODEL	CAPACITY CU. FT.
KL46 (4' x 6')	105	KL7746	123
KL56 (5' x 6')	137	KL7756	159
KL66 (6' x 6')	168	KL7766	196
KL68 (6' x 8')	231	KL7768	270
KL610 (6' x 10')	295	KL77610	344
KL612 (6' x 12')	357	KL77612	418
KL614 (6' x 14')	420	KL77614	490
KL88 (8' x 8')	318	KL7788	372
KL810 (8' x 10')	404	KL77810	473
KL812 (8' x 12')	490	KL77812	574
KL814 (8' x 14')	578	KL77814	675
KL1010 (10' x 10')	515	KL771010	602
KL1012 (10' x 12')	625	KL771012	731
KL1014 (10' x 14')	736	KL771014	860



KOLD LOCKER™

WALK-IN COOLERS & FREEZERS WITH SELF-CONTAINED REFRIGERATION SYSTEMS

MATCHING REFRIGERATION SYSTEMS

KOLD LOCKER MODEL	SELF-CONTAINED ONE-PIECE CEILING MOUNT							
	-10°F, 90° AMBIENT				+37°F to +38°F, 90° AMBIENT			
	CAPSULE PAK™ MODEL	BTUH*	CAPSULE PAK ECO™ MODEL	BTUH*	CAPSULE PAK™ MODEL	BTUH*	CAPSULE PAK ECO™ MODEL	BTUH*
6'7" HIGH WITH FLOOR								
KL46	CPF060JC-S-4-EV	2250	CPF050PC-S-0	1600	CPB050JC-S-O-EV	4400	CPB050PC-S-0	4100
KL56	CPF075JC-S-4-EV	3130	CPF075PC-S-0	2900	CPB050JC-S-O-EV	4400	CPB050PC-S-0	4100
KL66	CPF075JC-S-4-EV	2637	CPF075PC-S-0	2900	CPB050JC-S-O-EV	4400	CPB050PC-S-0	4100
KL68	CPF100JC-S-4-EV	3500	CPF100PC-S-0	3600	CPB050JC-S-O-EV	4400	CPB050PC-S-0	4100
KL610	CPF100JC-S-4-EV	3444	CPF100PC-S-0	3600	CPB075JC-S-4-EV	6385	CPB075PC-S-0	6700
KL612	CPF150JC-S-4-EV	4509	CPF150PC-S-4	4400	CPB075JC-S-4-EV	6385	CPB075PC-S-0	6700
KL614	CPF200JC-S-4-EV	6725	N/A	N/A	CPB075JC-S-4-EV	6385	CPB075PC-S-0	6700
KL88	CPF150JC-S-4-EV	4509	CPF150PC-S-4	4400	CPB075JC-S-4-EV	6385	CPB075PC-S-0	6700
KL810	CPF150JC-S-4-EV	4509	CPF150PC-S-4	4400	CPB075JC-S-4-EV	6385	CPB075PC-S-0	6700
KL812	CPF150JC-S-4-EV	4509	CPF150PC-S-4	4400	CPB075JC-S-4-EV	6385	CPB075PC-S-0	6700
KL814	CPF200JC-S-4-EV	6725	N/A	N/A	CPB075JC-S-4-EV	6385	CPB075PC-S-0	6700
KL1010	CPF200JC-S-4-EV	6725	N/A	N/A	CPB075JC-S-4-EV	6385	CPB075PC-S-0	6700
KL1012	CPF200JC-S-4-EV	6725	N/A	N/A	CPB075JC-S-4-EV	6385	CPB075PC-S-0	6700
KL1014	CPF200JC-S-4-EV	6725	N/A	N/A	CPB100JC-S-4-EV	7300	CPB100PC-S-0	8800
6'7" HIGH WITH FLOOR OUTDOOR								
KOD46	CPF060JC-E-4-EV	2135	N/A	N/A	CPB050JC-E-O-EV	4115	N/A	N/A
KOD56	CPF075JC-E-4-EV	2875	N/A	N/A	CPB050JC-E-O-EV	4115	N/A	N/A
KOD66	CPF075JC-E-4-EV	2875	N/A	N/A	CPB050JC-E-O-EV	4115	N/A	N/A
KOD68	CPF100JC-E-4-EV	3210	N/A	N/A	CPB050JC-E-O-EV	4115	N/A	N/A
KOD610	CPF100JC-E-4-EV	3210	N/A	N/A	CPB075JC-E-4-EV	5802	N/A	N/A
KOD612	CPF150JC-E-4-EV	4362	N/A	N/A	CPB075JC-E-4-EV	5802	N/A	N/A
KOD614	CPF200JC-E-4-EV	6350	N/A	N/A	CPB100JC-E-4-EV	6884	N/A	N/A
KOD88	CPF100JC-E-4-EV	3210	N/A	N/A	CPB075JC-E-4-EV	5802	N/A	N/A
KOD810	CPF100JC-E-4-EV	3210	N/A	N/A	CPB075JC-E-4-EV	5802	N/A	N/A
KOD812	CPF100JC-E-4-EV	3210	N/A	N/A	CPB100JC-E-4-EV	6884	N/A	N/A
KOD814	CPF200JC-E-4-EV	6350	N/A	N/A	CPB100JC-E-4-EV	6884	N/A	N/A
KOD1010	CPF200JC-E-4-EV	6350	N/A	N/A	CPB100JC-E-4-EV	6884	N/A	N/A
KOD1012	CPF200JC-E-4-EV	6350	N/A	N/A	CPB100JC-E-4-EV	6884	N/A	N/A
KOD1014	CPF200JC-E-4-EV	6350	N/A	N/A	CPB100JC-E-4-EV	6884	N/A	N/A
7' 4" HIGH LESS FLOOR - INDOOR ONLY								
KL7446	N/A	N/A	N/A	N/A	CPB050JC-S-O-EV	4400	CPB050PC-S-0	4100
KL7456	N/A	N/A	N/A	N/A	CPB050JC-S-O-EV	4400	CPB050PC-S-0	4100
KL7466	N/A	N/A	N/A	N/A	CPB050JC-S-O-EV	4400	CPB050PC-S-0	4100
KL7468	N/A	N/A	N/A	N/A	CPB050JC-S-O-EV	6250	CPB050PC-S-0	4100
KL74610	N/A	N/A	N/A	N/A	CPB075JC-S-4-EV	6250	CPB075PC-S-0	6700
KL74612	N/A	N/A	N/A	N/A	CPB075JC-S-4-EV	6250	CPB075PC-S-0	6700
KL74614	N/A	N/A	N/A	N/A	CPB075JC-S-4-EV	6250	CPB075PC-S-0	6700
KL7488	N/A	N/A	N/A	N/A	CPB075JC-S-4-EV	6250	CPB075PC-S-0	6700
KL74810	N/A	N/A	N/A	N/A	CPB075JC-S-4-EV	6250	CPB075PC-S-0	6700
KL74812	N/A	N/A	N/A	N/A	CPB075JC-S-4-EV	6250	CPB075PC-S-0	6700
KL74814	N/A	N/A	N/A	N/A	CPB100JC-S-4-EV	6250	CPB075PC-S-0	6700
KL741010	N/A	N/A	N/A	N/A	CPB075JC-S-4-EV	6250	CPB075PC-S-0	6700
KL741012	N/A	N/A	N/A	N/A	CPB100JC-S-4-EV	8484	CPB100PC-S-0	8800
KL741014	N/A	N/A	N/A	N/A	CPB100JC-S-4-EV	8484	CPB100PC-S-0	8800

*BTUH calculated using 16 hour design runtimes on coolers and 20 hour design runtimes on freezers.



KOLD LOCKER™

WALK-IN COOLERS & FREEZERS WITH SELF-CONTAINED REFRIGERATION SYSTEMS

MATCHING REFRIGERATION SYSTEMS

KOLD LOCKER MODEL	SELF-CONTAINED ONE-PIECE CEILING MOUNT							
	-10°F, 90°F AMBIENT				+37°F to +38°F, 90°F AMBIENT			
	CAPSULE PAK™ MODEL	BTUH*	CAPSULE PAK ECO™ MODEL	BTUH*	CAPSULE PAK™ MODEL	BTUH*	CAPSULE PAK ECO™ MODEL	BTUH*
7' 7" HIGH WITH FLOOR								
KL7746	CPF050JC-S-4-EV	4400	CPF050PC-S-0	1600	CPB050JC-S-0-EV	4400	CPB050PC-S-0	4100
KL7748	CPF075JC-S-4-EV	3130	CPF075PC-S-0	2900	CPB050JC-S-0-EV	4400	CPB050PC-S-0	4100
KL7756	CPF075JC-S-4-EV	3130	CPF075PC-S-0	2900	CPB050JC-S-0-EV	4400	CPB050PC-S-0	4100
KL7766	CPF100JC-S-4-EV	3500	CPF075PC-S-0	2900	CPB050JC-S-0-EV	4400	CPB050PC-S-0	4100
KL7768	CPF100JC-S-4-EV	3500	CPF100PC-S-0	3600	CPB050JC-S-4-EV	4400	CPB050PC-S-0	4100
KL77610	CPF150JC-S-4-EV	4509	CPF150PC-S-4	4400	CPB075JC-S-4-EV	6366	CPB075PC-S-0	6700
KL77612	CPF150JC-S-4-EV	4509	CPF150PC-S-4	4400	CPB075JC-S-4-EV	6366	CPB075PC-S-0	6700
KL77614	CPF200JC-S-4-EV	6725	N/A	N/A	CPB075JC-S-4-EV	6366	CPB075PC-S-0	6700
KL7788	CPF150JC-S-4-EV	4509	CPF150PC-S-4	4400	CPB075JC-S-4-EV	6366	CPB075PC-S-0	6700
KL77810	CPF150JC-S-4-EV	4509	CPF150PC-S-4	4400	CPB075JC-S-4-EV	6366	CPB075PC-S-0	6700
KL77812	CPF200JC-S-4-EV	6725	N/A	N/A	CPB075JC-S-4-EV	6366	CPB075PC-S-0	6700
KL77814	CPF200JC-S-4-EV	6725	N/A	N/A	CPB100JC-S-4-EV	7300	CPB100PC-S-0	8800
KL771010	CPF200JC-S-4-EV	6725	N/A	N/A	CPB075JC-S-4-EV	6366	CPB100PC-S-0	8800
KL771012	CPF200JC-S-4-EV	6725	N/A	N/A	CPB100JC-S-4-EV	7300	CPB100PC-S-0	8800
KL771014	CPF200JC-S-4-EV	6725	N/A	N/A	CPB100JC-S-4-EV	7300	CPB100PC-S-0	8800
7' 7" HIGH WITH FLOOR OUTDOOR								
KOD7746	CPF075JC-E-4-EV	2875	N/A	N/A	CPB050JC-E-0-EV	4115	N/A	N/A
KOD7756	CPF075JC-E-4-EV	2875	N/A	N/A	CPB050JC-E-0-EV	4115	N/A	N/A
KOD7766	CPF075JC-E-4-EV	2875	N/A	N/A	CPB050JC-E-0-EV	4115	N/A	N/A
KOD7768	CPF100JC-E-4-EV	3210	N/A	N/A	CPB050JC-E-0-EV	4115	N/A	N/A
KOD77610	CPF100JC-E-4-EV	3210	N/A	N/A	CPB075JC-E-4-EV	5802	N/A	N/A
KOD77612	CPF150JC-E-4-EV	4362	N/A	N/A	CPB100JC-E-4-EV	6884	N/A	N/A
KOD77614	CPF200JC-E-4-EV	6350	N/A	N/A	CPB100JC-E-4-EV	6884	N/A	N/A
KOD7788	CPF150JC-E-4-EV	6350	N/A	N/A	CPB075JC-E-4-EV	5802	N/A	N/A
KOD77810	CPF150JC-E-4-EV	6350	N/A	N/A	CPB075JC-E-4-EV	5802	N/A	N/A
KOD77812	CPF200JC-E-4-EV	6350	N/A	N/A	CPB100JC-E-4-EV	6884	N/A	N/A
KOD77814	CPF200JC-E-4-EV	6350	N/A	N/A	CPB100JC-E-4-EV	6884	N/A	N/A
KOD771010	CPF200JC-E-4-EV	6350	N/A	N/A	CPB075JC-E-4-EV	5802	N/A	N/A
KOD771012	CPF200JC-E-4-EV	6350	N/A	N/A	CPB100JC-E-4-EV	6884	N/A	N/A
KOD771014	CPF200JC-E-4-EV	6350	N/A	N/A	CPB100JC-E-4-EV	6884	N/A	N/A
8'4" HIGH LESS FLOOR								
KL8466	N/A	N/A	N/A	N/A	CPB050JC-S-0-EV	4400	CPB050PC-S-0	4100
KL8468	N/A	N/A	N/A	N/A	CPB050JC-S-4-EV	4400	CPB050PC-S-0	4100
KL84610	N/A	N/A	N/A	N/A	CPB050JC-S-4-EV	4400	CPB050PC-S-0	4100
KL84612	N/A	N/A	N/A	N/A	CPB075JC-S-4-EV	6366	CPB075PC-S-0	6700
KL84614	N/A	N/A	N/A	N/A	CPB0075C-S-4-EV	6366	CPB075PC-S-0	6700
KL8488	N/A	N/A	N/A	N/A	CPB075JC-S-4-EV	6366	CPB075PC-S-0	6700
KL84810	N/A	N/A	N/A	N/A	CPB075JC-S-4-EV	6366	CPB075PC-S-0	6700
KL84812	N/A	N/A	N/A	N/A	CPB100JC-S-4-EV	7300	CPB100PC-S-0	8800
KL84814	N/A	N/A	N/A	N/A	CPB100JC-S-4-EV	7300	CPB100PC-S-0	8800
8'7" HIGH WITH FLOOR								
KL8766	CPF075JC-S-4-EV	2875	CPF075PC-S-0	2900	CPB050JC-S-0-EV	4400	CPB050PC-S-0	4100
KL8768	CPF100JC-S-4-EV	3500	CPF100PC-S-0	3600	CPB050JC-S-4-EV	4400	CPB050PC-S-0	4100
KL87610	CPF150JC-S-4-EV	4509	CPF150PC-S-4	4400	CPB075JC-S-4-EV	6366	CPB075PC-S-0	6700
KL87612	CPF150JC-S-4-EV	4509	CPF150PC-S-4	4400	CPB075JC-S-4-EV	6366	CPB075PC-S-0	6700
KL87614	CPF200JC-S-4-EV	6725	N/A	N/A	CPB075JC-S-4-EV	6366	CPB075PC-S-0	6700
KL8788	CPF150JC-S-4-EV	4509	CPF150PC-S-4	4400	CPB075JC-S-4-EV	6366	CPB075PC-S-0	6700
KL87810	CPF150JC-S-4-EV	4509	CPF150PC-S-4	4400	CPB075JC-S-4-EV	6366	CPB075PC-S-0	6700
KL87812	CPF200JC-S-4-EV	6725	N/A	N/A	CPB100JC-S-4-EV	7300	CPB100PC-S-0	8800
KL87814	CPF200JC-S-4-EV	6725	N/A	N/A	CPB100JC-S-4-EV	7300	CPB100PC-S-0	8800
8'7" HIGH WITH FLOOR OUTDOOR								
KOD8766	CPF100JC-E-4-EV	3210	N/A	N/A	CPB050JC-E-0-EV	4115	N/A	N/A
KOD8768	CPF100JC-E-4-EV	3210	N/A	N/A	CPB050JC-E-0-EV	4115	N/A	N/A
KOD87610	CPF150JC-E-4-EV	4362	N/A	N/A	CPB075JC-E-4-EV	5802	N/A	N/A
KOD87612	CPF150JC-E-4-EV	4362	N/A	N/A	CPB100JC-E-4-EV	6884	N/A	N/A
KOD87614	CPF200JC-E-4-EV	6350	N/A	N/A	CPB100JC-E-4-EV	6884	N/A	N/A
KOD8788	CPF150JC-E-4-EV	4362	N/A	N/A	CPB075JC-E-4-EV	5802	N/A	N/A
KOD87810	CPF150JC-E-4-EV	4362	N/A	N/A	CPB100JC-E-4-EV	6884	N/A	N/A
KOD87812	CPF200JC-E-4-EV	6350	N/A	N/A	CPB100JC-E-4-EV	6884	N/A	N/A
KOD87814	CPF200JC-E-4-EV	6350	N/A	N/A	CPB100JC-E-4-EV	6884	N/A	N/A

*BTUH calculated using 16 hour design runtimes on coolers and 20 hour design runtimes on freezers

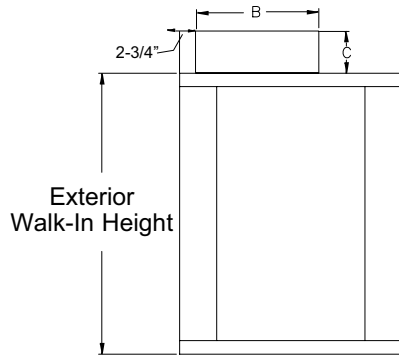
**Contact factory for information.



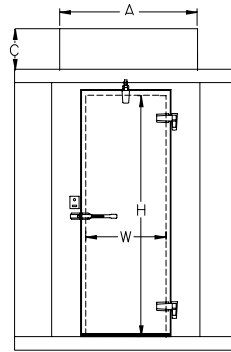
KOLD LOCKER™

WALK-IN COOLERS & FREEZERS WITH SELF-CONTAINED REFRIGERATION SYSTEMS

REFRIGERATION SYSTEM PHYSICAL SPECIFICATIONS



Side View



Front View

DOOR OPENING SIZE		
W	H	MODEL
26"	66"	STD Series
26"	78"	74 Series
26"	78"	77 Series

CAPSULE PAK™ MODEL NO.	"A"	"B"	"C"
CPB050JC-*0-EV	41-1/8"	50-1/2"	20-5/8"
CPB075JC-*4-EV	41-1/8"	50-1/2"	20-5/8"
CPB100JC-*4-EV	41-1/8"	50-1/2"	20-5/8"
CPF060JC-*4-EV	41-1/8"	50-1/2"	20-5/8"
CPF075JC-*4-EV	41-1/8"	50-1/2"	20-5/8"
CPF100JC-*4-EV	41-1/8"	50-1/2"	20-5/8"
CPF150JC-*4-EV	45-3/4"	53-3/8"	24-3/4"
CPF200JC-*4-EV	45-3/4"	53-3/8"	24-3/4"

CAPSULE PAK ECO™ MODEL NO.	"A"	"B"	"C"
CPB050PC-S-0	36-3/4"	48-1/4"	14-7/8"
CPB075PC-S-0	36-3/4"	48-1/4"	14-7/8"
CPB100PC-S-0	36-3/4"	48-1/4"	18-7/8"
CPF050PC-S-0	36-3/4"	48-1/4"	14-7/8"
CPF075PC-S-0	36-3/4"	48-1/4"	14-7/8"
CPF100PC-S-0	36-3/4"	48-1/4"	18-7/8"
CPF150PC-S-4	36-3/4"	48-1/4"	18-7/8"

* Insert "S" for indoor model and "E" for outdoor

NOTE:

- Consideration must be given to accessibility for service & free condenser air flow. Consult factory with installation questions. Proper condensing unit ventilation must be provided. The factory recommends 200cfm of fresh air in the surrounding area with ample clearance around the condensing unit.
- +90°F ambient or less and 50% RH
- Subject to change without notice



KOLD LOCKER™

WALK-IN COOLERS & FREEZERS WITH SELF-CONTAINED REFRIGERATION SYSTEMS

REFRIGERATION SYSTEM ELECTRICAL DATA

CAPSULE PAK™ INDOOR REFRIGERATION SYSTEMS (CORD AND PLUG CONNECTED)

MODEL	REFRIGERANT	ELECTRICAL	TOTAL SYSTEM AMPS	TOTAL DEFROST AMPS	NEMA PLUG	AWEF	BTUH*	SHIP WT. (LB/KG)
CPB050JC-S-0-EV	R-449A	115/60/1	9.3	N/A	5-15P	5.61	4400	261/118
CPB075JC-S-4-EV	R-449A	208-230/60/1	5.5	N/A	6-15P	5.61	6366	271/123
CPB100JC-S-4-EV	R-449A	208-230/60/1	7.5	N/A	6-15P	5.61	7300	275/125
CPF060JC-S-4-EV	R-449A	208-230/60/1	8.0	5.7	6-15P	1.99	2250	270/122
CPF075JC-S-4-EV	R-449A	208-230/60/1	8.5	5.7	6-15P	2.08	3130	271/123
CPF100JC-S-4-EV	R-449A	208-230/60/1	9.6	5.7	6-15P	2.11	3500	275/125
CPF150JC-S-4-EV	R-449A	208-230/60/1	11.1	8.7	6-20P	2.22	4509	358/162
CPF200JC-S-4-EV	R-449A	208-230/60/1	15.7	8.7	6-20P	2.43	6725	377/171

CAPSULE PAK™ OUTDOOR REFRIGERATION SYSTEMS (CORD AND PLUG CONNECTED)

MODEL	REFRIGERANT	ELECTRICAL	TOTAL SYSTEM AMPS	TOTAL DEFROST AMPS	NEMA PLUG	AWEF	BTUH*	SHIP WT. (LB/KG)
CPB050JC-E-0-EV	R-449A	115/60/1	9.3	N/A	5-15P	7.60	4115	286/130
CPB075JC-E-4-EV	R-449A	208-230/60/1	5.5	N/A	6-15P	7.60	5802	296/134
CPB100JC-E-4-EV	R-449A	208-230/60/1	7.5	N/A	6-15P	7.60	6884	300/136
CPF060JC-E-4-EV	R-449A	208-230/60/1	8.0	5.7	6-15P	2.89	2135	285/129
CPF075JC-E-4-EV	R-449A	208-230/60/1	8.5	5.7	6-15P	2.92	2875	285/129
CPF100JC-E-4-EV	R-449A	208-230/60/1	9.6	5.7	6-15P	2.95	3210	295/134
CPF150JC-E-4-EV	R-449A	208-230/60/1	11.1	8.7	6-20P	3.03	4362	378/171
CPF200JC-E-4-EV	R-449A	208-230/60/1	15.7	8.7	6-20P	3.15	6350	397/180

CAPSULE PAK ECO™ INDOOR REFRIGERATION SYSTEMS (CORD AND PLUG CONNECTED)

MODEL	REFRIGERANT	ELECTRICAL	TOTAL SYSTEM AMPS	NEMA PLUG	AWEF	BTUH*	SHIP WT. (LB/KG)
CPB050PC-S-0	R290	115/60/1	6.9	5-15P	5.61	4100	192/87
CPB075PC-S-0	R290	115/60/1	11.4	5-20P	5.61	6700	214/97
CPB100PC-S-0	R290	115/60/1	15.3	5-20P	5.61	8800	257/117
CPF050PC-S-0	R290	115/60/1	6.9	5-15P	1.96	1600	197/89
CPF075PC-S-0	R290	115/60/1	11.4	5-20P	2.07	2900	219/99
CPF100PC-S-0	R290	115/60/1	15.3	5-20P	2.14	3600	262/119
CPF150PC-S-4	R290	230/60/1	7.4	6-15P	2.21	4400	262/119

*BTUH calculated using 16 hour design runtimes on coolers and 20 hour design runtimes on freezers, 90°F ambient.

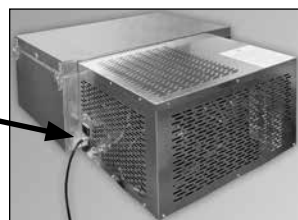
Note:

- Consult factory for application specifics, pricing and ship date availabilities.
- All Capsule Pak and Capsule Pak ECO systems require a single power supply.



Capsule Pak Models

**9 ft. long power cord
attached to condensing
unit section**



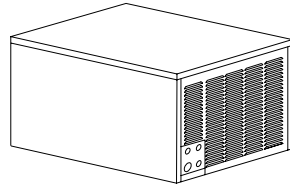
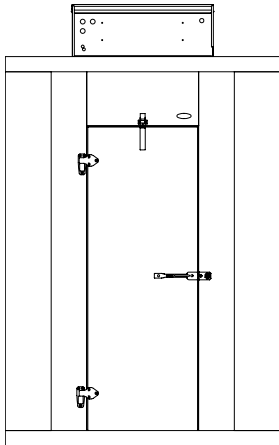
Capsule Pak ECO Models



KOLD LOCKER™

WALK-IN COOLERS & FREEZERS WITH SELF-CONTAINED REFRIGERATION SYSTEMS

REMOTE CAPSULE PAK™ SYSTEMS (ALL WITH R-449A REFRIGERANT)



Outdoor "E" systems include ambient controls and weather-proof hoods with quick connects for simple field connections to pre-charged line lengths of your choice.

Consult factory for application specifics, pricing, and ship date availabilities.

Optional Electric Condensate Vaporizer

Remote Capsule Pak Systems are available with an electric condensate vaporizer. This UL and C-UL approved product requires no drain lines on indoor applications, which makes installation fast and easy and allows equipment to be operational in a shorter time frame.

NOTE: All specifications within this publication subject to change without notice.



891 County Road U • Hudson, WI 54016 • 800-955-5253 • norlake.com

079297-11/22
©2022 Norlake, Inc. All rights reserved.