





| | <i>weight</i> | <i>length</i> | <i>width</i> | <i>height</i> | <i>cubic feet</i> | <i>UPC</i> | <i>(USD) list price ea.</i> |
|---|--|---------------|--------------|---------------|-----------------------|--------------------|---------------------------------|
| BL49LDSK Blacklock 4 Quart Deep Skillet With Lid | | | | | | | |
| <i>each</i> | 10.76 LB | 14.19 L | 13.50 W | 5.00 H | 0.554 FT ³ | 075536-85028-3 | |
| <i>case</i> | 11.56 LB | 15.38 L | 14.06 W | 5.50 H | 0.688 FT ³ | 1-00-75536-85028-0 | 1 PACK |
|  | Triple seasoned™ for a natural, nonstick finish. Lightweight with an extended handle that stays cooler longer. Generous cooking capacity. Basting rings recirculate moisture. Raised, high-heat aluminum knob. | | | | | | |



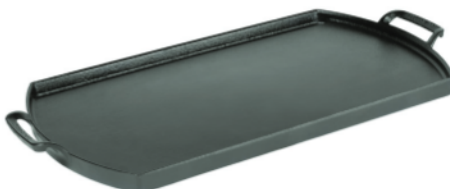
| | | | | | | | |
|---|---|---------|---------|--------|-----------------------|--------------------|--------|
| BL02DO Blacklock 5.5 Quart Dutch Oven | | | | | | | |
| <i>each</i> | 11.86 LB | 11.30 L | 11.30 W | 6.30 H | 0.466 FT ³ | 075536-85005-4 | |
| <i>case</i> | 12.50 LB | 12.40 L | 11.70 W | 6.70 H | 0.563 FT ³ | 1-00-75536-85005-1 | 1 PACK |
|  | Triple seasoned™ for a natural, nonstick finish. Lightweight with elevated handles. Generous cooking capacity. Basting rings recirculate moisture. Raised, high-heat aluminum knob. | | | | | | |




| | | | | | | | |
|---|---|---------|---------|--------|-----------------------|--------------------|--------|
| BL17BR Blacklock 17 Inch/4 Quart Cast Iron Braiser | | | | | | | |
| <i>each</i> | 13.15 LB | 13.38 L | 12.50 W | 4.00 H | 0.387 FT ³ | 075536-85060-3 | |
| <i>case</i> | 13.70 LB | 14.44 L | 13.00 W | 4.25 H | 0.461 FT ³ | 1-00-75536-85060-0 | 1 PACK |
|  | Triple seasoned™ for a natural, nonstick finish. Lightweight with elevated handles. Generous cooking capacity. Basting rings recirculate moisture. Raised, high-heat aluminum knob. | | | | | | |



| | | | | | | | |
|---|--|---------|---------|--------|-----------------------|--------------------|--------|
| BL65GP Blacklock 12 Inch Square Grill Pan | | | | | | | |
| <i>each</i> | 8.16 LB | 20.40 L | 12.30 W | 2.10 H | 0.305 FT ³ | 075536-85003-0 | |
| <i>case</i> | 8.74 LB | 21.50 L | 12.80 W | 2.60 H | 0.414 FT ³ | 1-00-75536-85003-7 | 1 PACK |
|  | Triple seasoned™ for a natural, nonstick finish. Lightweight with an extended handle that stays cooler longer. Grill lines create a restaurant-quality sear. Generous cooking surface. Elevated assist handle. | | | | | | |



| | | | | | | | |
|---|--|---------|---------|--------|-----------------------|--------------------|--------|
| BL77DG Blacklock 10 x 20 Inch Double Burner Griddle | | | | | | | |
| <i>each</i> | 8.08 LB | 21.20 L | 10.40 W | 2.30 H | 0.293 FT ³ | 075536-85001-6 | |
| <i>case</i> | 8.60 LB | 22.10 L | 11.06 W | 2.70 H | 0.376 FT ³ | 1-00-75536-85001-3 | 1 PACK |
|  | Triple seasoned™ for a natural, nonstick finish. Lightweight with elevated handles. Generous cooking surface fits over two burners. Low side walls. Drip tray that catches grease. | | | | | | |