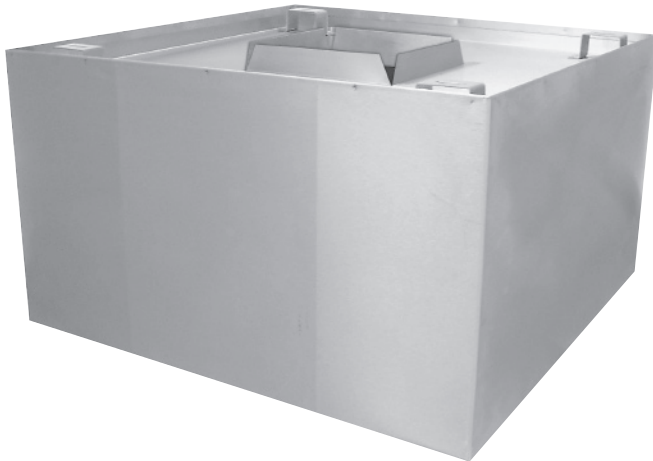




STAINLESS STEEL CONDENSATE HOODS

Item #: _____ Qty #: _____
 Model #: _____
 Project #: _____



FEATURES:

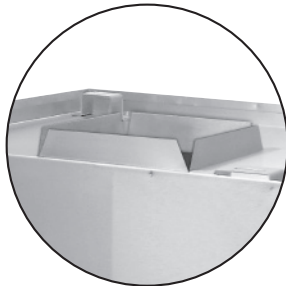
Wall and Ceiling Mounting Provision facilitates installation.
 2" Exhaust Collar.
 1-1/2" Gutter along bottom perimeter with 3/8" Drain at rear.

CONSTRUCTION:

Flanged Seams are sealed - water tight.

MATERIAL:

Heavy Duty Gauge Stainless Steel Type "300".



8" x 10" vent opening.
 Collar is centered 2" in height.

Model #	L	W
CH-3636	36"	36"
CH-4242	42"	42"
CH-4848	48"	48"

OPTIONAL MODIFICATIONS	Model #	Size
Specify alternate Collar Location	CH-61	
Additional Length or Width	CH-56	

This item is not UL or NFPA Listed.



Customer Service Available To Assist You **1-800-645-3166** 8:30 am - 7:00 pm E.S.T.

For Orders & Customer Service:
 Email: customer@advancetabco.com or Fax: 631-242-6900

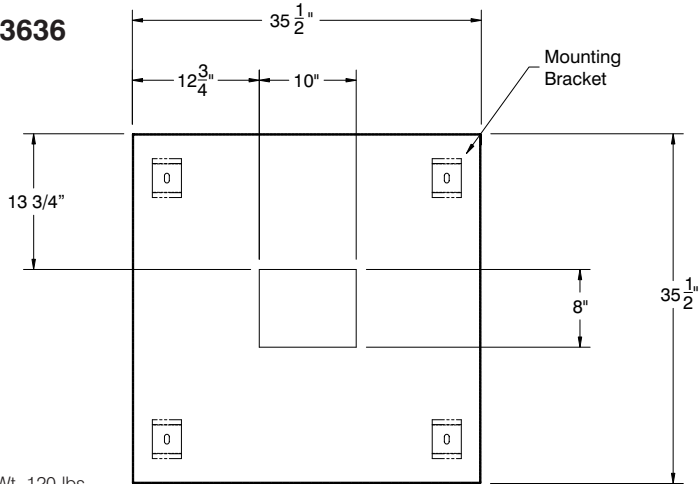
For Smart Fabrication™ Quotes:
 Email: smartfab@advancetabco.com or Fax: 631-586-2933

DIMENSIONS and SPECIFICATIONS

ALL DIMENSIONS ARE TYPICAL

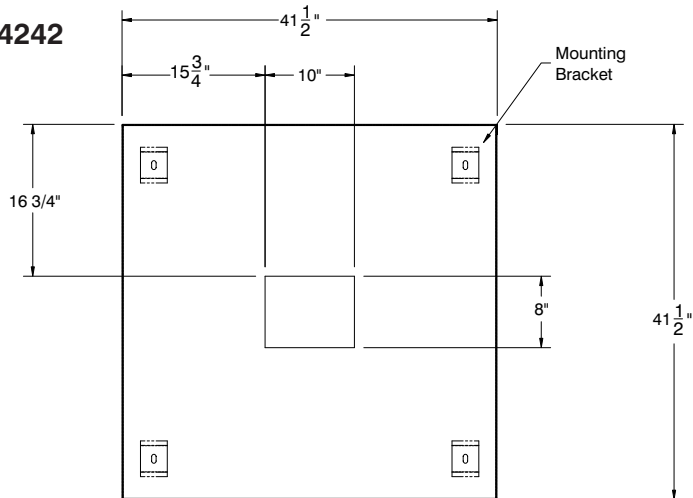
TOL ± .500"

CH-3636



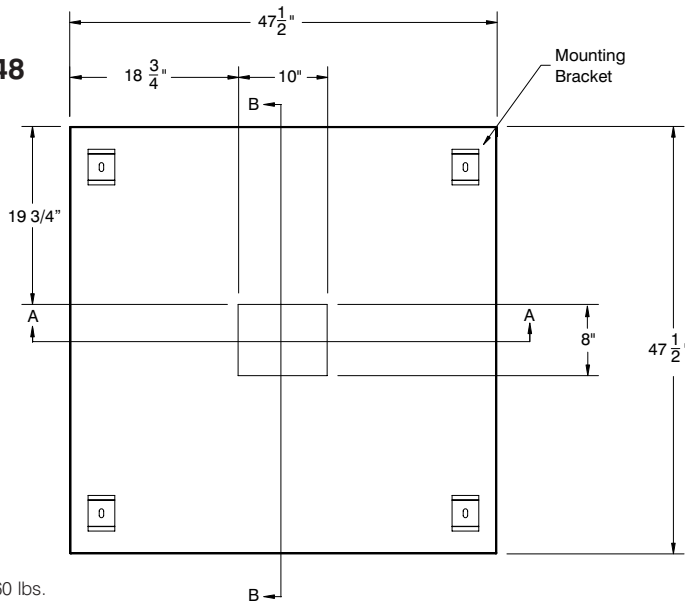
Aprox. Wt. 120 lbs.

CH-4242



Aprox. Wt. 140 lbs.

CH-4848



Aprox. Wt. 160 lbs.

