

# Instructions

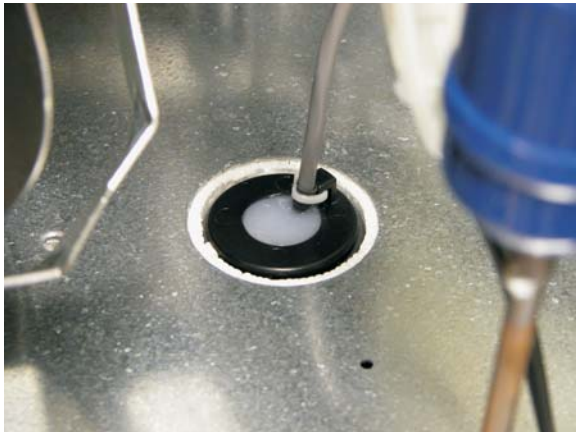
## for nugget ice dispenser kit KDIL-PN-150

Kit contents:

- KVS ultrasonic ice level control
- KNUGDIV diverting plate
- Agitator for nugget ice

All three items are installed separately and do not interconnect.

1. Remove original agitator and install the one from the kit using the original fasteners.
2. Install the KNUGDIV diverting plate using its instructions.
3. Place the ice machine on the adapter and install the KVS ultrasonic control following its instructions. See sensor location reference photo below.



4. Set the ice level control knob to the first position, as shown here:

