



STAINLESS STEEL PAELLA PAN

Pan with handles suitable for all cooktops including induction. Sandwich bottom: stainless steel - aluminum - stainless steel provides uniform heating.

| Item # | Ø" | H" |
|--------|--------|-------|
| 070988 | 11 | 1 1/2 |
| 070990 | 12 1/2 | 1 1/2 |
| 070992 | 14 1/8 | 1 1/2 |



KITCHEN UTENSILS HANGING RAIL

One piece hanging rail suitable for hook or hole hanging utensils. Made of stainless steel.

| Item # | L" |
|--------|--------|
| 719110 | 39 3/8 |

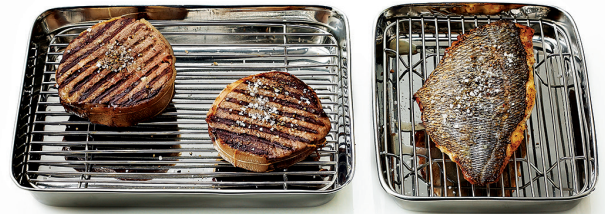


SPICE INFUSER

For infusing herbs and spices.

- 4 notches to allow for different volumes.
- Both parts of the stainless steel infuser are kept together thanks to a silicone thread that links them.
- This silicone thread has a hook on the end, allowing the infuser to be suspended from the handle of the cooking pot.

| Item # | Ø" | L" |
|--------|-------|----------------|
| 071351 | 1 7/8 | 4 1/3 to 5 1/8 |



STAINLESS TRAY + GRID

Small pan, practical for cooking, for draining cooked meat and reserving small quantities of ingredients (without grid).

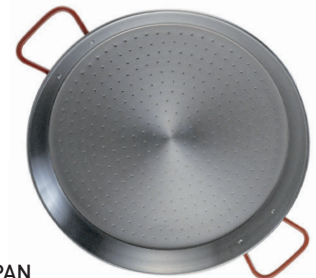
| Item # | L" | W" | H" |
|--------|--------|-------|-------|
| 714021 | 8 1/16 | 5 7/8 | 1 1/8 |
| 714022 | 9 1/4 | 7 1/2 | 1 3/8 |



BLACK STEEL PAELLA PAN

Curved sides, two handles.

| Item # | Ø" | H" | Wt |
|--------|--------|--------|--------------|
| 062051 | 14 1/8 | 1 5/8 | 6 lbs. 2 oz. |
| 062052 | 15 3/4 | 2 1/16 | 7 lbs. 6 oz. |
| 062053 | 17 3/4 | 2 1/4 | 9 lbs. 2 oz. |



POLISHED STEEL PAELLA PAN

| Item # | Ø" |
|--------|--------|
| 070522 | 7 7/8 |
| 070528 | 11 |
| 071038 | 14 1/8 |
| 071041 | 15 3/4 |
| 071050 | 27 1/2 |
| 071052 | 35 1/2 |



FLAME TAMER

Tinned steel with folding wire handle, for protecting porcelain, glass and fire clay containers from flame.

| Item # | Ø" |
|--------|-------|
| 639001 | 8 1/4 |

