

TWIN MIXER KETTLE, DIRECT STEAM
LEG MOUNTED CONSOLE TYPE
TILTING, 2/3 STEAM JACKETED

Project _____
 Item _____
 Quantity _____
 FCSI Section 11400 _____
 Approved _____
 Date _____

Models

- TMKDL-40-T • TMKDL-100-T
- TMKDL-60-T • TMKDL-125-T
- TMKDL-80-T • TMKDL-150-T



Shown with optional Power Tilt, Easydial Control with Data Logger & Heat Shield

Standard Features

- 3 HorsePower Hydraulic powered Agitator, Scraper and Bridge Lift
- Infinitely Variable Scraper Speed Control from 0 to 40 rpm
- Infinitely Variable Ratio between Scraper and Agitator: Agitator rotates from 0 to 8 times the speed of the Scraper
- Removable (without tools) Nylon Blades scrape the entire Jacketed Surface
- Safety Device prevents high speed Starts
- Mixing stops when bridge is lifted - includes safety cover and screen
- Agitator and Scraper are Bayonet Mounted for easy removal
- Factory installed Chrome-Plated Steam Control Kit
- Tilt Mechanism of roller bearings and case hardened self-locking worm and segment gear
- Power Tilt standard on 150 gallon model
- 3" diameter Quick Opening Butterfly Valve with Acme Thread
- Hot and Cold Water Faucet
- Condensate Valve with Insulated Handle
- 50 psi Steam Jacket Rating on 40 - 100 gallon models
- 35 psi Steam Jacket Rating on 125 & 150 gallon models
- All Plumbing, Electrical, Hydraulics enclosed in Stainless Steel Consoles
- Enclosed, 10 Gauge Stainless Steel hydraulically operated Mixer Bridge
- 316 Stainless Steel Kettle Interior
- Kettles and all exterior surface are Stainless Steel
- Large Pouring Lip
- Gallon Markings stamped into Scraper Shaft
- Level adjustable solid feet (for floor bolting)
- Standard 208-240 volts, 60 Hz, 3 phase, 4 wire
- Typical approvals include NSF and ASME
- 316 Stainless Steel Interior
- Two piece cover with safety screen

Short Form Specifications

Shall be CLEVELAND Tilting Twin Mixer Kettle Model TMKDL - _____ -T ,Console/Leg mounted, Direct Steam Mixer Kettles with _____ psi Steam Jacket Rating. 3 H.P. Hydraulic powered Scraper/Agitator and Bridge Lift. 0-40 rpm Scraper Speed with Variable Scraper to Agitator Ratio from 1-1 to 8-1. Type 316 Stainless Steel interior, Stainless Steel enclosed Mixer Bridge. All Plumbing, Electrical and Hydraulics enclosed in Consoles. Gallon markings, Bayonet Mounted Scraper and Agitator. 3" Butterfly Valve. Hot and Cold Water Faucet. Steam Control Kit. Safety Device prevents high speed starts; Mixer stops when Bridge is lifted. Kettle and all exterior surfaces are Stainless Steel. 316 Stainless Steel Interior.

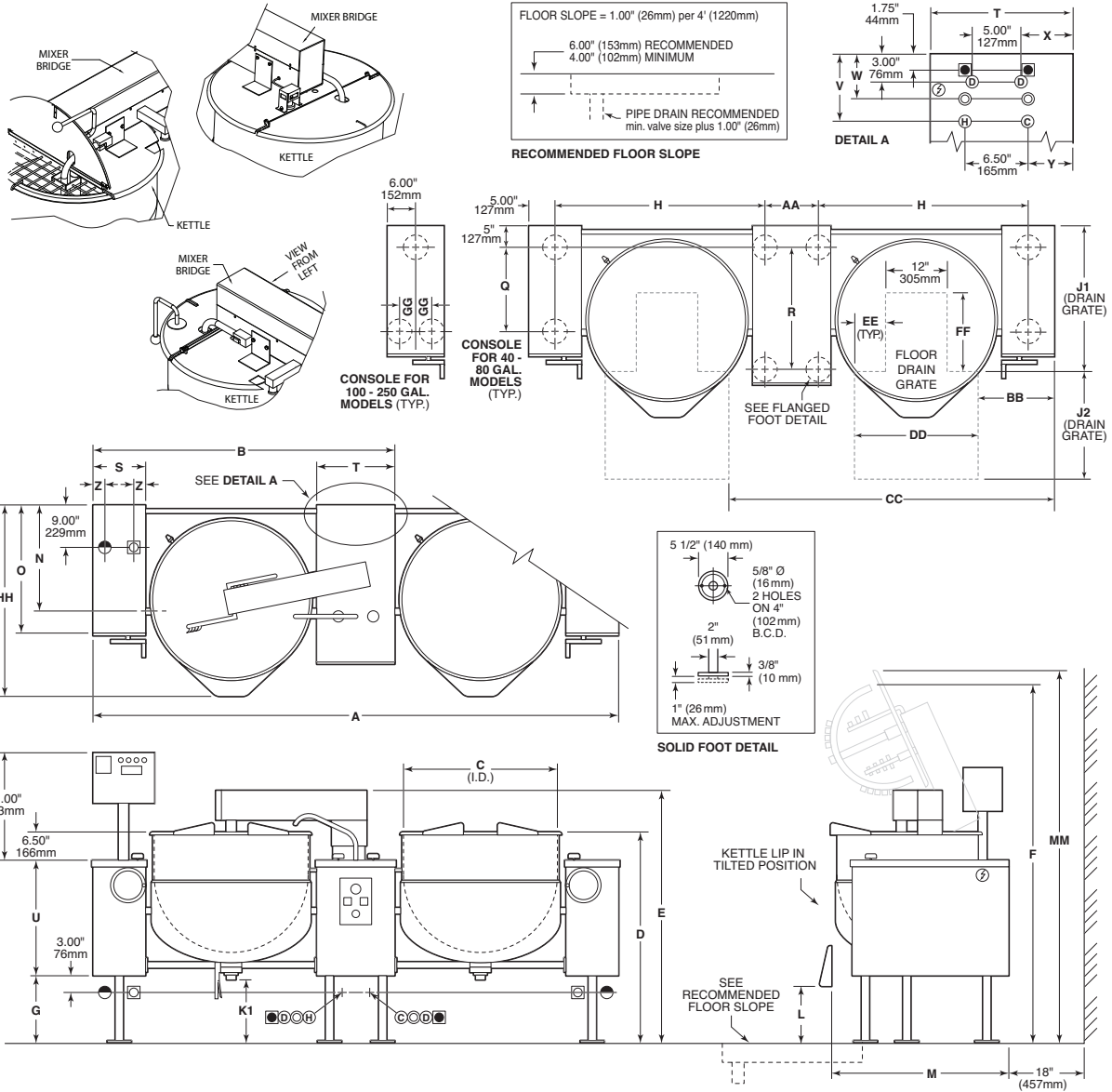
Options & Accessories

- Easydial style Time and Temperature Controls with Data Logger and USB Port (EZD-DTCI)
- Automatic Water Cooling (AWC-2)
- Alternate Draw-Off Valves
- Food Strainer (FS)
- Flow Diverter (FD)
- Pan Carrier (PCK)
- Swing Funnels (SF-1 or SF-2)
- Pressure Reducing Valve (PRV)
- Power Tilt (PT) where not standard
- Kettle Accessory Kit (KAK) includes:
 - Clean-up Brush (CB)
 - 36" Kettle Paddle (KP)
 - 36" Kettle Whip (KW)
 - 36" Kettle Brush (KB)
 - Draw-off Brush (DB)
 - 24 oz. Ladle (KL)
- Water Meter (GMF or LMF) built into system
- Accessories for connection to Food Pumps
- Leg Extensions (ELTMK)
- 3" Air Piston Valve (FPVA3)
- Heat Shields (THS001)
- Correctional Packages (CP-MKDL)

KE004046-97

DIMENSIONS ("/mm)

| GAL./LIT. | A | B | C | D | E | F | G | H | J1 | J2 | K | L | M | N | O | P | Q | R | S | T | U | V | W | X | Y | Z | AA | BB | CC | DD | EE | FF | GG | HH | LL | MM |
|-----------|--------|-------|-------|-------|-------|-------|-------|-------|-------|-------|-------|-------|--------|-------|--------|-------|--------|-------|-------|-------|-------|------|------|------|------|------|-------|-------|-------|-------|-------|--------|------|-------|-------|-------|
| 40/150 | 98.00 | 58.00 | 26.00 | 40.50 | 50.00 | 69.25 | 7.50 | 37.75 | 30.00 | 25.00 | 12.00 | 12.25 | 36.38 | 23.13 | 27.375 | 36.00 | 18.375 | 28.00 | 10.00 | 18.00 | 26.50 | 7.75 | 5.25 | 6.50 | 5.75 | 1.75 | 12.50 | 12.50 | 60.50 | 25.00 | 6.50 | 13.625 | na | 39.00 | 5.375 | 74.25 |
| 2489 | 1473 | 660 | 1029 | 1270 | 1759 | 191 | 959 | 762 | 635 | 305 | 311 | 924 | 587 | 695 | 914 | 467 | 711 | 254 | 457 | 673 | 197 | 133 | 165 | 146 | 44 | 318 | 318 | 1537 | 635 | 165 | 346 | na | 991 | 137 | 1886 | |
| 60/225 | 105.00 | 61.50 | 29.50 | 40.50 | 50.00 | 70.25 | 7.50 | 41.25 | 31.00 | 28.00 | 8.50 | 7.63 | 39.13 | 23.13 | 27.375 | 36.00 | 18.375 | 28.00 | 10.00 | 18.00 | 26.50 | 7.75 | 5.25 | 6.50 | 5.75 | 1.75 | 12.50 | 12.75 | 64.25 | 28.00 | 8.00 | 14.88 | na | 40.75 | 5.375 | 75.25 |
| 2667 | 1562 | 749 | 1029 | 1270 | 1784 | 191 | 1048 | 787 | 787 | 216 | 194 | 994 | 587 | 695 | 914 | 467 | 711 | 254 | 457 | 673 | 197 | 133 | 165 | 146 | 44 | 318 | 324 | 1632 | 711 | 203 | 378 | na | 1035 | 137 | 1911 | |
| 80/300 | 112.00 | 66.00 | 33.00 | 42.50 | 52.00 | 74.75 | 9.50 | 44.75 | 32.00 | 29.00 | 8.50 | 6.94 | 39.88 | 23.13 | 27.375 | 36.00 | 18.375 | 28.00 | 10.00 | 18.00 | 26.50 | 7.75 | 5.25 | 6.50 | 5.75 | 1.75 | 12.50 | 13.50 | 68.50 | 30.00 | 9.00 | 16.13 | na | 42.75 | 5.375 | 79.75 |
| 2845 | 1651 | 838 | 1080 | 1321 | 1899 | 241 | 1137 | 813 | 711 | 216 | 176 | 1013 | 587 | 695 | 914 | 467 | 711 | 254 | 457 | 673 | 197 | 133 | 165 | 146 | 44 | 318 | 343 | 1740 | 762 | 229 | 410 | na | 1086 | 137 | 2026 | |
| 100/375 | 121.00 | 68.50 | 35.50 | 44.50 | 54.00 | 78.25 | 11.50 | 48.25 | 33.00 | 29.00 | 8.50 | 6.69 | 41.13 | 23.13 | 29.375 | 36.00 | 18.375 | 28.00 | 12.00 | 18.00 | 26.50 | 7.75 | 5.25 | 6.50 | 5.75 | 2.50 | 12.50 | 15.75 | 73.25 | 32.00 | 10.00 | 17.00 | 3.25 | 43.75 | 5.375 | 83.25 |
| 3073 | 1756 | 902 | 1130 | 1372 | 1968 | 292 | 1226 | 838 | 737 | 216 | 170 | 1045 | 587 | 746 | 914 | 467 | 711 | 305 | 457 | 673 | 197 | 133 | 165 | 146 | 64 | 318 | 400 | 1861 | 813 | 254 | 432 | 83 | 1111 | 137 | 2115 | |
| 125/475 | 130.00 | 74.00 | 40.00 | 44.50 | 54.00 | 83.00 | 11.50 | 52.75 | 34.00 | 30.00 | 8.00 | 5.00 | 40.375 | 23.13 | 29.375 | 36.00 | 18.375 | 28.00 | 12.00 | 18.00 | 26.50 | 7.75 | 5.25 | 6.50 | 5.75 | 2.50 | 12.50 | 16.50 | 81.50 | 35.00 | 11.50 | 18.50 | 3.25 | 46.00 | 5.375 | 86.00 |
| 3302 | 1880 | 1016 | 1130 | 1372 | 2108 | 292 | 1340 | 864 | 782 | 203 | 127 | 1026 | 587 | 746 | 914 | 467 | 711 | 305 | 457 | 673 | 197 | 133 | 165 | 146 | 64 | 318 | 419 | 2070 | 889 | 292 | 470 | 83 | 1168 | 137 | 2235 | |
| 150/575 | 130.00 | 74.00 | 40.00 | 48.50 | 58.00 | 87.00 | 15.50 | 52.75 | 34.00 | 32.00 | 7.25 | 5.37 | 44.00 | 23.13 | 29.375 | 36.00 | 18.375 | 28.00 | 12.00 | 18.00 | 26.50 | 7.75 | 5.25 | 6.50 | 5.75 | 2.50 | 12.50 | 16.50 | 81.50 | 35.00 | 11.50 | 18.50 | 3.25 | 46.00 | 5.375 | 92.00 |
| 3302 | 1800 | 1016 | 1232 | 1473 | 2210 | 394 | 1340 | 864 | 813 | 184 | 137 | 1118 | 587 | 746 | 914 | 467 | 711 | 305 | 457 | 673 | 197 | 133 | 165 | 146 | 64 | 318 | 419 | 2070 | 889 | 292 | 470 | 83 | 1168 | 137 | 2337 | |



ELECTRICAL

| Supply Voltage | Phase | Wires | HZ | Supply Amps | Wire Size |
|----------------|-------|-------|----|-------------|-----------|
| 200-208 | 3 | 3 | 60 | 15 | 12 |
| 220-240 | 3 | 3 | 60 | 14 | 12 |
| 380-415 | 3 | 3 | 60 | 9 | 14 |
| 440-480 | 3 | 3 | 60 | 7 | 14 |

STEAM JACKET RATING

| PSI | 35 | 50 | 70 | PSI | 35 | 50 | 70 |
|---------|-----|----|----|----------|-----|-----|----|
| 40 Gal. | N/A | ST | OP | 100 Gal. | N/A | ST | OP |
| 60 Gal. | N/A | ST | OP | 125 Gal. | ST | N/A | OP |
| 80 Gal. | N/A | ST | OP | 150 Gal. | ST | N/A | OP |

ST - Standard, OP - Optional, N/A - Not Available

UTILITIES

- Direct Steam - 3/4" NPT (40 - 80 Gal.), 1 1/4" NPT (100 - 150 Gal.)
- Cold Water Faucet - 3/4" NPT
- Cooling Water In - 3/4" NPT
- Cooling Water Out - 3/4" NPT
- Automatic Drain - 3/8" NPT
- Condensate Return - 3/4" NPT
- Hot Water Faucet - 3/4" NPT

CLEARANCE

- Right - 0, Left - 0
- Rear - 18" (457mm) Recommended
- 0 - Minimum

NOTES:

Cleveland Range reserves right of design improvement or modification, as warranted.
 Many regional, state and local codes exist and it is the responsibility of the owner and installer to comply with the codes.
 Installation of backflow preventers, vacuum breakers and other specific code requirements is the responsibility of the owner and installer.
 Cleveland Range equipment is built to comply with applicable standards for manufacturers. Included among those approval agencies are U.L., A.G.A., NSF, ASME/N.Bd., CSA, CGA, ETL and others.

(NOT TO SCALE)

Mixer Kettles