



Model: \_\_\_\_\_ Item #: \_\_\_\_\_ Date: \_\_\_\_\_

Project: \_\_\_\_\_ Qty: \_\_\_\_\_ Approved By: \_\_\_\_\_

# Dry Storage Back Bar Cabinets

Royal Series Underbar



BD48-SSS-LR

## Standard Features

- 35”H without top, 36”H with optional 1” stainless steel top
- 24” front to back depth (25” with top)
- Stainless steel handles with built-in locks
- Choice of door styles and finish (see configuration table below)
- Heavy duty doors with built-in locks
- All stainless steel, coved corner interior
- NSF epoxy coated durable shelves (1 bottom & 2 adjustable shelves per door)
- Pre-drilled bottom for optional legs or casters (uses 1/4-20 self tapping 1/2”L screw)

## Models

Model	Length	Doors	Weight*
<b>BD24</b>	24”	1-Door	120 lbs.
<b>BD48</b>	48”	2-Door	160 lbs.
<b>BD72</b>	72”	3-Door	280 lbs.

\*add 20 lbs. for models with optional 1” stainless steel top

## Optional Accessories

Model	Description
<b>BS-100</b>	6” Stainless Steel Legs (Set of 4)
<b>BS-101</b>	6” Stainless Steel Legs (Set of 6)
<b>BS-102</b>	4” Stainless Steel Legs (Set of 4)
<b>BS-103</b>	4” Stainless Steel Legs (Set of 6)
<b>BS-106</b>	Left Side Stainless Steel Kick Plate
<b>BS-107</b>	Right Side Stainless Steel Kick Plate
<b>BS-124</b>	24” Stainless Steel Front Kick Plate
<b>BS-148</b>	48” Stainless Steel Front Kick Plate
<b>BS-160</b>	60” Stainless Steel Front Kick Plate
<b>BS-172</b>	72” Stainless Steel Front Kick Plate
<b>BS-500</b>	Blue LED Light
<b>BS-501</b>	Warm White 3500K LED Light
<b>BC-130</b>	2” Overall Casters (1” Wheels, Set of 4)
<b>BC-131</b>	2” Overall Casters (1” Wheels, Set of 6)
<b>BC-132</b>	3” Overall Casters (2” Wheels, Set of 4)
<b>BC-133</b>	3” Overall Casters (2” Wheels, Set of 6)
<b>BC-134</b>	4” Overall Casters (3” Wheels, Set of 4)
<b>BC-135</b>	4” Overall Casters (3” Wheels, Set of 6)
<b>BC-136</b>	5” Overall Casters (4” Wheels, Set of 4)
<b>BC-137</b>	5” Overall Casters (4” Wheels, Set of 6)
<b>BC-138</b>	6” Overall Casters (5” Wheels, Set of 4)
<b>BC-139</b>	6” Overall Casters (5” Wheels, Set of 6)

## Specifications

<b>Top</b>	▪ 18 gauge galvanized sub top (optional 20 gauge 1” stainless steel top)
<b>Sides</b>	▪ 20 gauge stainless steel
<b>Back</b>	▪ 20 gauge galvanized steel
<b>Bottom</b>	▪ 18 gauge galvanized steel
<b>Interior</b>	▪ 20 gauge stainless steel walls with coved corners ▪ NSF epoxy coated durable shelves - units come standard with 1 bottom shelf and 2 adjustable shelves per door.
<b>Insulation</b>	▪ 2” thick foamed-in-place polyurethane
<b>Exterior</b>	▪ Black vinyl clad models: 20 gauge stainless steel ▪ Stainless steel models: 20 gauge stainless steel
<b>Doors</b>	▪ Self-closing 24”W heavy duty doors available in black vinyl or stainless steel door finish ▪ Stainless steel handles with built-in locks ▪ Door opening: 19-3/4”W x 29-11/16”H



Model: \_\_\_\_\_ Item #: \_\_\_\_\_ Date: \_\_\_\_\_

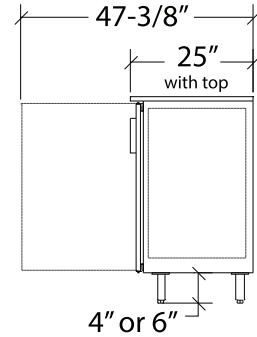
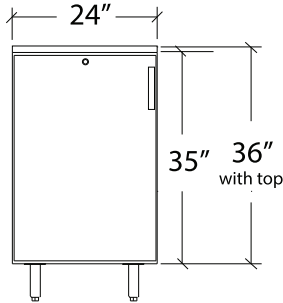
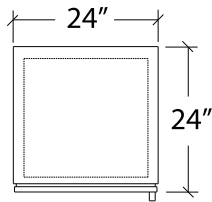
Project: \_\_\_\_\_ Qty: \_\_\_\_\_ Approved By: \_\_\_\_\_

# Dry Storage Back Bar Cabinets

Royal Series Underbar

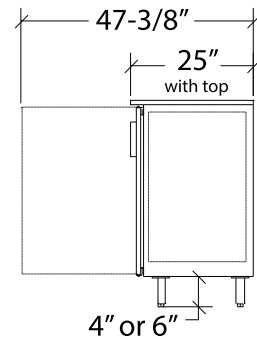
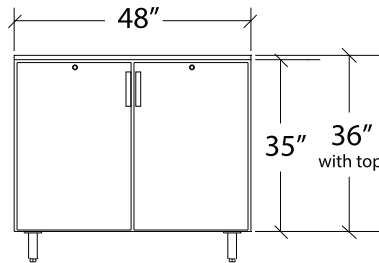
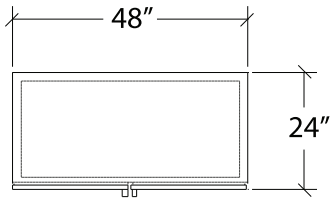
## 24" One-Door

Models starting BD24



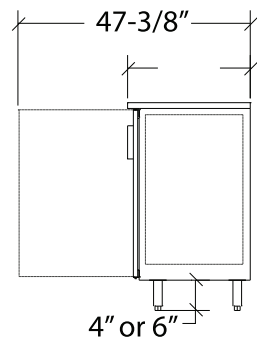
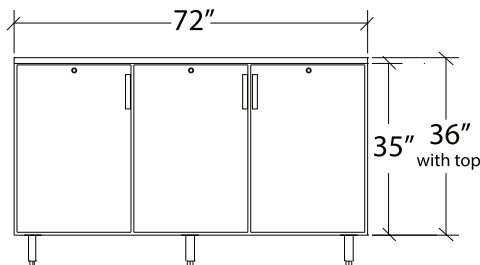
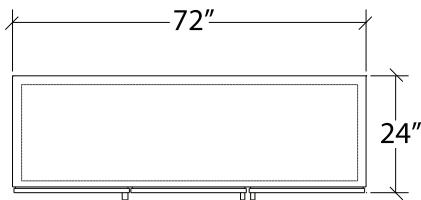
## 48" Two-Door

Models starting BD48



## 72" Three-Door

Models starting BD72



**Note:** Optional casters raise height 1" higher than wheel size

**Note:** Optional 4" or 6" legs available