

ASSEMBLY MANUAL

CAMSHELVING® FLEX STATION MERCHANDISER



FULL PANEL KITS – 2 side panels, 1 top

CSFLEXMERCH – Fresh & Fast

CSFLEXMERCH2 – Pick Up & Go

TOP PANEL KITS – top panel only

CSFLEXMERCH3 – Fresh & Fast

CSFLEXMERCH4 – Pick Up & Go

DIMENSIONS:

Side Panel: W 23" x H 56"

Header: L 48" x H 6 1/2" (kits made after November 2020)

Overall Unit Height When Installed:

On 67" High Mobile Flex Station – 73 1/2"

On 75" High Mobile Flex Station – 81 1/2"

NOTE: Merchandiser side panels are designed to fit 24" x 64"/67" Camshelving units but can be installed on any 24" deep units, 64" or higher. When installed on 72" or higher, there will be a small gap at the bottom when the panels are installed.



Assembled Premium Series Flex Station
Shown with Optional Food Storage Boxes.



Parts Checklist:

- A Fully Assembled Flex Station***
*Purchased Separately
 - B Header with Aluminum Base Frame***
*Top Panel Merchandiser Kits include 1 Header Panel with Zip Ties Only
 - C Side Panel with Menu/Info Holder**
(Menu/Info Holder available with Fast & Fresh Merchandiser only)
 - D Side Panel**
 - E Zip Ties (2) for Header Base Frame**
- Needed: Scissors or Cutting Pliers**

IMPORTANT! BEFORE INSTALLING SIDE PANELS:

If your FLEX STATION model has tiers with divider bars for food pans/food boxes, set it up with all divider bars installed first. Once panels are attached, there is VERY limited access to be able to properly install or move divider bars on each side/end.

A. SIDE PANEL INSTALLATION (For Top Panel Only, skip to section B. Header Panel Installation on next page.)



STEP 1

Remove the backing paper from the adhesive strip at each of the top corners of the side panel (C/D).



STEP 2

Carefully set top corners into a straight position directly under the post connectors and in a straight line down each post then press firmly in place.



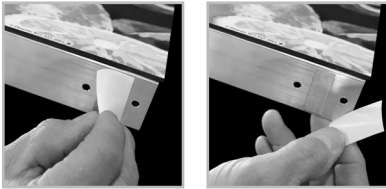
STEP 3

Remove the rest of the backing papers and firmly press both sides, from top to bottom.
Repeat 1-3 for the other side panel.

ASSEMBLY MANUAL

CAMSHELVING® FLEX STATION MERCHANDISER

B. HEADER PANEL INSTALLATION



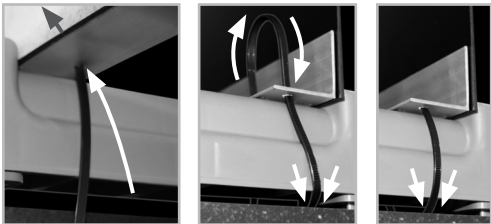
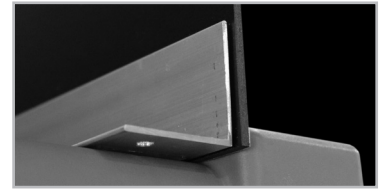
STEP 1

Remove all adhesive backing paper from the Header Metal Base.



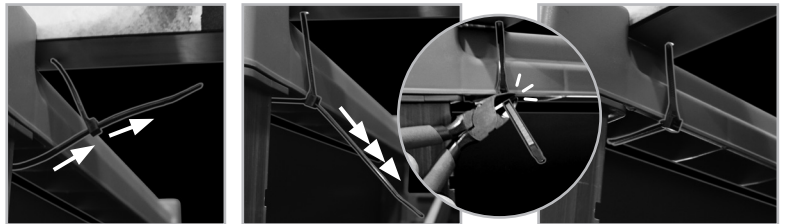
STEP 2

Position Header Metal Base on top front of the Flex Station, moving it all the way forward to rest firmly against the back of the post connector tops. **IMPORTANT!** Before pressing down into place, there are 2 holes on each end of the Metal Base - 1 should be on the outside of the post connector and one should be on the inside.



STEP 3

Thread 1 zip tie up through the inside hole, out over the post connector, down into the outer hole and tuck it back in above the side panel.



STEP 4

Thread the zip tie into the open end and pull tight. **Repeat 1-4 for the other end of the Header Metal Base.** Check the Header position for any movement and tighten the zip ties if necessary. Once secured into place, snip off excess zip tie ends with scissors or cutting pliers.

Care and Cleaning

The Flex Station Merchandiser Panels are designed to withstand normal wear and tear from regular use. Each panel has a protective, clear laminate top layer to protect graphics from dust, food debris, and also incidental marks from regular use. It will not withstand damage from extreme contact with hard or sharp surfaces. It is possible that ink marks, including Sharpie, may be removed with a standard commercial cleaner. The panels will tolerate moisture and rain exposure but on a limited basis. Fading due to sunlight is possible over time. It is not recommended to store Flex Station with Merchandiser in coolers or freezers.

To clean, use a soft, dry cloth for dusting, or a soft damp cloth and soapy water for more extensive cleaning. Commercial products can be used for heavy duty cleaning but do not use solvent based products like acetone. Panels should never be pressure washed. Panels can be removed for complete cleaning but it is not advised. Remove adhesive on unit with standard glue removal cleaner. Re-installation of panels requires operator to supply adhesive strips and zip ties to re-attach panels and header to the unit.

Warranty

Cambro Manufacturing warrants its new products(s) to be free from defects in material and workmanship for a period of one (1) year from the date of shipment from authorized CAMBRO distribution locations.