

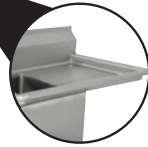


18 GAUGE STAINLESS STEEL

# FE SERIES - FABRICATED SINKS

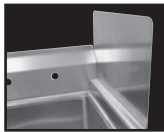


## One & Two Compartments



Rolled Rim Edge  
For Additional Strength

Item #: \_\_\_\_\_ Qty #: \_\_\_\_\_  
 Model #: \_\_\_\_\_  
 Project #: \_\_\_\_\_



**K-700**  
Removable Side Splashes Fits Left OR Right Side

	MODEL #	Length L	Width W	Bowl Size A & B	Bowl Depth	Drbd. Length Size	# of Drbrds.	Drbd. Location	Wt.	Approx. Cubes
<b>1 COMP.</b>	FE-1-1515-X	20"	20 3/4"	15"x15"	12"	N/A	0	None	38 lbs.	11
	FE-1-1620-X	21"	25 3/4"	16"x20"	12"	N/A	0	None	42 lbs.	12
	FE-1-1620-18RorL-X	36 1/2"	25 3/4"		12"	18"	1	R or L	55 lbs.	18
	FE-1-1812-X	23"	23 3/4"	18"x18"	12"	N/A	0	None	42 lbs.	13
	FE1-1812-18RorL-X	38 1/2"	23 3/4"		12"	18"	1	R or L	57 lbs.	22
	FE1-1812-18RLX	54"	23 3/4"		12"	18"	2	R & L	65 lbs.	23
	FE-1-1824-X	23"	29 3/4"	18"x24"	14"	N/A	0	None	60 lbs.	16
	FE-1-1824-24RorL-X	44 1/2"	29 3/4"		14"	24"	1	R or L	105 lbs.	28
	FE-1-2424-X	29"	29 3/4"	24"x24"	14"	N/A	0	None	90 lbs.	20
FE-1-2424-24RLX	72"	29 3/4"	14"		24"	2	R & L	122 lbs.	44	
<b>2 COMP.</b>	FE-2-1620-X	37"	25 3/4"	16"x20"	12"	N/A	0	None	72 lbs.	18
	FE-2-1620-18RLX	68"	25 3/4"		12"	18"	2	R & L	100 lbs.	32
	FE-2-1812-X	41"	23 3/4"	18"x18"	12"	N/A	0	None	65 lbs.	18
	FE-2-1812-18RorL-X	56 1/2"	23 3/4"		12"	18"	1	R or L	78 lbs.	26
	FE-2-1812-18RLX	72"	23 3/4"		12"	18"	2	R & L	84 lbs.	44
	FE-2-2424-24RLX	96"	29 3/4"	24"x24"	14"	24"	2	R & L	140 lbs.	50

**FEATURES:**

- Backsplash has tile edge for ease of installation.
- Sink bowls are 3/4" coved corner and meet NSF requirements.
- Rolled Rim Edge for additional strength.
- 15"x15", 16"x20" & 18"x18" Sink Bowls are 12" deep.
- 18"x24" & 24"x24" Sink Bowls are 14" deep.
- 9" Backsplash.

**CONSTRUCTION:**

- All TIG welded.
- Welded areas blended to match adjacent surfaces and to a satin finish.
- Gussets welded to a die-embossed reinforced plate.

**MATERIAL:**

- 1 5/8" diameter galvanized legs with 1" adjustable plastic bullet feet.
- Entire unit is 18 gauge 304 stainless steel.
- Gussets - galvanized steel.

**MECHANICAL:**

- Supply is 1/2" IPS hot & cold.
- Faucet holes on 8" centers.
- Faucets are not included (**see accessories**).
- Waste drains are 1 1/2" IPS S/S basket type, located in center of sink bowl, and are included.

**OPTIONAL:**

- FE-SS-12 S/S Leg Upgrade For Sinks w/ 12" Deep Bowls
- FE-SS-14 S/S Leg Upgrade For Sinks w/ 14" Deep Bowls



Customer Service Available To Assist You 1-800-645-3166 8:30 am - 7:00 pm E.S.T.

For Orders & Customer Service:

Email: customer@advancetabco.com or Fax: 631-242-6900

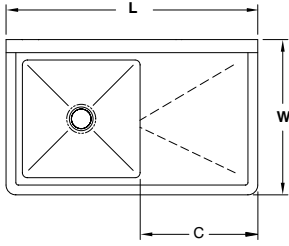
For Smart Fabrication™ Quotes:

Email: smartfab@advancetabco.com or Fax: 631-586-2933

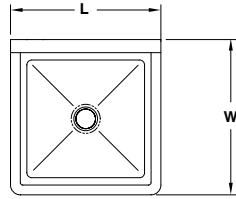
# DIMENSIONS and SPECIFICATIONS

TOL Overall: ± .500" Interior: ± .250"

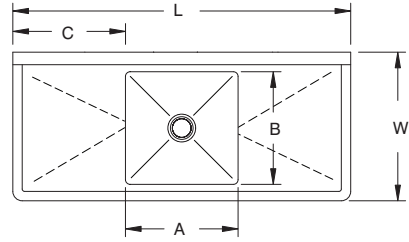
ALL DIMENSIONS ARE TYPICAL



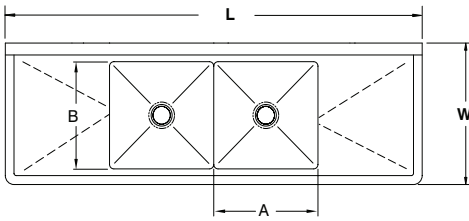
1 COMP - 1 DRBD



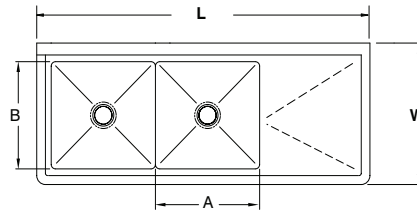
1 COMP



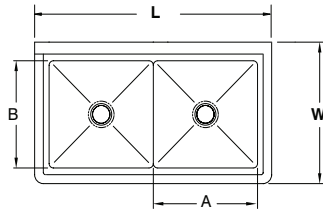
1 COMP - 2 DRBD



2 COMP - 2 DRBD



2 COMP - 1 DRBD



2 COMP

ACCESSORIES	Model #	Qty
DRAINS		
FAUCETS		

