



MobileServ® Junior Food Carts - 2-Bay

"Ideal for serving at tables": Keep prepared food hot until ready to serve!

Includes stainless or laminate paneled stainless cart with 2 Full Size HOT Buffet Servers (2 pan holders, 4 half size steam pans {2-1/2" or 4" deep, depending on model}, 2 rolltop lids) and 2 Clear Polycarbonate Pans with Drain Shelves

Made in America

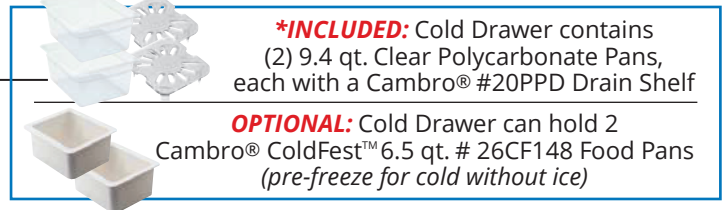


CBC-HH-L5 FRONT;
Back is similar except for cord
Cart is open at sides for easy access to drawers & shelves



Side views: Total of 4 drawers & 3 shelves

Cold Drawer: Great for yogurt cups, fruit cups & more!



OPTIONAL: SGJ-2 Sneeze Guard available for all CBC-HH models. See back page for details.



CBC-HH-L Series: 2-Bay Junior Mobile Hot Buffet Carts

- Stainless steel construction with handles
- Silent casters (2 with locking brakes; 2 with directional locks)
- CladRex™ laminate OR Stainless panels on front/sides of cart
- 2 Full Size HOT* Buffet Servers: each has 2 half size stainless steam pans, 1 clear Eastman Tritan™ copolyester rolltop lid with metal hinges, & stainless pan holder
- 2-1/2" deep half size steam pans hold over 30 four oz. servings ea.; 4" deep pans hold over 48 four oz. servings ea. (4" deep steam pans NOT meant for use with meats unless only filled halfway)
- 4 drawers: plating drawer, silverware storage, divided/condiments storage, & cold storage
- 3 tray/ plates storage shelves
- Patented **UL Safety & Sanitary**
- (2) 9.4 qt. clear polycarbonate pans, each with Cambro® #20PPD Drain Shelf
- 2 variable heat control knobs - 155° - 205° F
- 72" long coiled cord • 120V/ 600W/ 5A
- Rubber bumpers on top & bottom cart corners
- Warming surface top removable for service
- Freight class 250; NOT UPS-able, must ship by truck
- All carts FOB factory (06098)
- Warranty: 1 Year limited warranty in 48 contiguous US states only. 30 days initial defect on laminate panels

Carts may be custom built to your specifications. Please contact Cadco directly.

For more information, please contact Cadco, Ltd, 200 International Way, Winsted, CT 06098
Tel. (860)738-2500 • Fax (860) 738-9772 • E-mail: info@cadco-ltd.com • Web site: www.cadco-ltd.com

Due to continual product improvement, all product specifications, designs and prices are subject to change without notice.

4/4/2019 RV07



MobileServ® Junior Food Carts - 2-Bay Series

Model Variations include: 2 1/2" or 4" deep steam pans; CladRex™ Laminate panels in a selection of colors, OR Stainless panels (4" deep pans NOT meant for use with meats unless only filled halfway)



CBC-HH-L5-4 FRONT;
Back is similar except for cord
With 4" deep steam pans & panholders

MobileServ® is a registered trademark of Cadco, Ltd.

(Trays, plates & utensils not included)

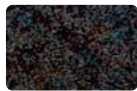


CBC-HH-L5 FRONT;
Back is similar except for cord
With 2-1/2" deep steam pans & panholders

Front & Side Panels Colors & Materials (refer to Cart Model Numbers)



-L1 LAMINATE



-L3 LAMINATE



-L4 LAMINATE



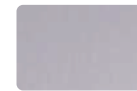
-L5 LAMINATE



-L6 LAMINATE



-L7 LAMINATE



-LST STAINLESS



CUSTOM GRAPHICS

(Allergen-free color code)

- L1: **Chestnut:** Varying hues of bronze with red undertones
- L3: **Grey:** Medium bluish grey with brown accents
- L4: **Navy:** Dark blue with reddish brown accents
- L5: **Cherry:** Dark cherry woodgrain
- L6: **Black:** Solid, slightly textured black laminate

- L7: **Purple:** Solid, slightly textured purple (Allergen-free color code)

- LST: **Stainless:** Stainless panels
- OPTIONAL CUSTOM GRAPHICS:** Vinyl decal panels OR magnets - see Optional Accessories below

Printed laminate colors are approximate. For maximum accuracy, contact Cadco for no-charge color chip.

Model	Description (Pans Depth)	Buffet Server Type	Volts	Watts	Amps	Unit Dim. W" x H" x D"	Unit Wt. (lbs.)	Ship Wt. (lbs.)	UPC
CBC-HH-L1	2-1/2" deep	2 Hot	120	600	5	52 3/4 x 49 1/2 x 20 3/4	167	250*	654796-99801-2
CBC-HH-L3 (654796-99803-6)		CBC-HH-L4 (654796-99804-3)				CBC-HH-L5 (654796-99805-0)			
CBC-HH-L6 (654796-99806-7)		CBC-HH-L7 (654796-99807-4)				CBC-HH-LST (654796-99397-0)			
CBC-HH-L1-4	4" deep	2 Hot	120	600	5	52 3/4 x 51 x 20 3/4	173	250*	654796-99811-1
CBC-HH-L3-4 (654796-99813-5)		CBC-HH-L4-4 (654796-99814-2)				CBC-HH-L5-4 (654796-99815-9)			
CBC-HH-L6-4 (654796-99816-6)		CBC-HH-L7-4 (654796-99817-3)				CBC-HH-LST-4 (654796-99398-7)			

*Ship wts. include weight of shipping skid (approx. 40 lbs.)

All models: carton + skid dim.: W:42", H:62", D:48", Carton Cube: 72.4 cft.

OPTIONAL: SGJ-2: Sneeze Guard for CBC-HH Series Carts

- Accessory ONLY for CBC-HH series MobileServ® Junior Carts
- Stainless steel & polycarbonate • Made in America
- Attaches to cart without tools • W: 46" x H: 15" x D: 15"
- Ship Wt.: 100 lbs. (incl. 40 lbs. skid) • Carton + skid dim.: W: 42", H: 53-1/2", D: 48"
- Carton + skid cube: 62.4 cft. • Freight Class 200 • UPC: 654796-99995-8



Installable by end user

MORE OPTIONAL ACCESSORIES - See catalog or separate spec sheet

Factory installed during cart build



- CG-S: CUSTOM GRAPHIC PANELS** for CBC-HH carts
- Vinyl decal panels for front & back of cart
- See cadco-ltd.com for artwork guidelines & templates



- PW-4: Outdoor Pneumatic Wheels Kit**
- Set of (4) 8" diameter wheels w/ locks
- Rubber wheels w/ steel hardware
- 10" floor clearance



Installable by end user

PS-CBC-6CP - Cold Bay Pan Holder Kit

- Switch 1 or more cart bays from Hot to Cold
- 2 half size, 6" deep cold pans, 2 lids, & stainless panholder

CUSTOM MAGNETS (for carts with stainless or Clad-Rex™ panels)

- CM-LOGO:** Set of 2 small (up to 144 sq. in. ea.) magnets
- CM-FRONT-S:** 1 magnet to fill front panel of cart; for CBC-HH