



STAINLESS STEEL

WORK TABLES

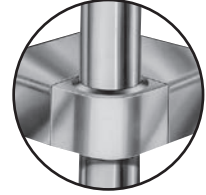
STANDARD Series - 5" Backsplash - Undershef Style



Item #: _____ Qty #: _____
 Model #: _____
 Project #: _____



Rolled Rim Edges on Front & Splash on Back and Square Side Edges



Featuring as Standard: **"THE PROVEN"** ORIGINAL ADVANCE TABCO **Adjustable Undershef with Die Cast Leg Clamp**

FEATURES:

Top is furnished with a 1 5/8" sanitary rolled rim edge on front, 1 5/8" square side edges, and a 5" splash with a 1" return on the rear side.

TWO hat channels stud welded to reinforce and maintain a level working surface. 30" and 36" wide tables supplied with THREE hat channels.

Pre-engineered welded angle adapters insure ease of future drawer installation.

Aluminum die cast "leg-to-shelf" clamp secures shelf to leg eliminating unsightly nuts and bolts. Undershef is adjustable.

CONSTRUCTION:

All TIG welded. Exposed weld areas polished to match adjacent surfaces.

Entire top mechanically polished to a satin finish.

Top is sound deadened.

Roll formed embossed galvanized hat channels are secured to top by means of structural adhesive and weld studs.

Gussets welded to support hat sections.

MATERIAL:

KMS-SERIES: Stainless Steel Legs & Undershef

TOP: 16 gauge stainless steel type "304" series.

SHELF: 18 gauge stainless steel.

LEGS: 1 5/8" diameter tubular stainless steel.
 1" adjustable stainless steel bullet feet.
 Stainless steel gussets.

KMG-SERIES: Galvanized Legs & Undershef

TOP: 16 gauge stainless steel type "304" series.

SHELF: 18 gauge galvanized steel.

LEGS: 1 5/8" diameter tubular galvanized steel.
 1" adjustable plastic bullet feet.
 Galvanized steel gussets.

KMS-Series:

Stainless Steel Legs & Undershef

L	24" Wide	30" Wide	36" Wide
30"	KMS-240	KMS-300	
24"	KMS-242	KMS-302	KMS-362
36"	KMS-243	KMS-303	KMS-363
48"	KMS-244	KMS-304	KMS-364
60"	KMS-245	KMS-305	KMS-365
72"	KMS-246	KMS-306	KMS-366
84"	KMS-247	KMS-307	KMS-367
*96"	KMS-248	KMS-308	KMS-368
*108"	KMS-249	KMS-309	KMS-369
*120"	KMS-2410	KMS-3010	KMS-3610
*132"	KMS-2411	KMS-3011	KMS-3611
*144"	KMS-2412	KMS-3012	KMS-3612

KMG-Series:

Galvanized Steel Legs & Undershef

L	24" Wide	30" Wide	36" Wide
30"	KMG-240	KMG-300	
24"	KMG-242	KMG-302	KMG-362
36"	KMG-243	KMG-303	KMG-363
48"	KMG-244	KMG-304	KMG-364
60"	KMG-245	KMG-305	KMG-365
72"	KMG-246	KMG-306	KMG-366
84"	KMG-247	KMG-307	KMG-367
*96"	KMG-248	KMG-308	KMG-368
*108"	KMG-249	KMG-309	KMG-369
*120"	KMG-2410	KMG-3010	KMG-3610
*132"	KMG-2411	KMG-3011	KMG-3611
*144"	KMG-2412	KMG-3012	KMG-3612



*Units 8 ft. and larger are furnished with six (6) legs

Create Your Own Efficient Workstation with the Available Standard Accessories (Visit Section K)



Customer Service Available To Assist You 1-800-645-3166 8:30 am - 7:00 pm E.S.T.

For Orders & Customer Service:

Email: customer@advancetabco.com or Fax: 631-242-6900

For Smart Fabrication™ Quotes:

Email: smartfab@advancetabco.com or Fax: 631-586-2933

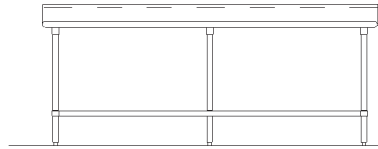
DETAILS and SPECIFICATIONS

ALL DIMENSIONS ARE TYPICAL TOL ± .500"

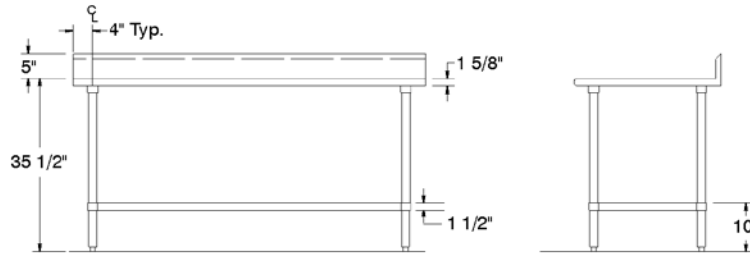
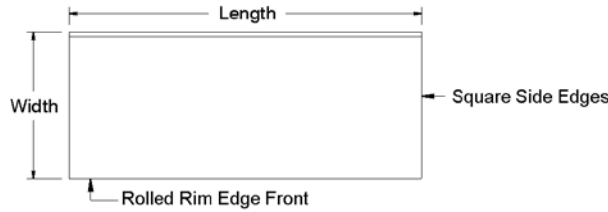
All Units Shipped Unassembled (KD) for Reduced Shipping Costs.

KMS & KMG Series Undershelf Style 5" Backsplash

Finished size of undershelf = Length minus 5 3/4"
Width minus 5 3/4"



Units 8ft. and larger are furnished with six (6) legs



KMS-Series: Stainless Steel Legs & Undershelf

L	24" Wide	Wt.	30" Wide	Wt.	36" Wide	Wt.
30"	KMS-240	55 lbs.	KMS-300	70 lbs.		
24"	KMS-242	50 lbs.	KMS-302	56 lbs.	KMS-362	86 lbs.
36"	KMS-243	66 lbs.	KMS-303	77 lbs.	KMS-363	92 lbs.
48"	KMS-244	81 lbs.	KMS-304	92 lbs.	KMS-364	101 lbs.
60"	KMS-245	95 lbs.	KMS-305	111 lbs.	KMS-365	121 lbs.
72"	KMS-246	113 lbs.	KMS-306	129 lbs.	KMS-366	142 lbs.
84"	KMS-247	135 lbs.	KMS-307	153 lbs.	KMS-367	169 lbs.
96"	KMS-248	150 lbs.	KMS-308	171 lbs.	KMS-368	189 lbs.
108"	KMS-249	165 lbs.	KMS-309	195 lbs.	KMS-369	260 lbs.
120"	KMS-2410	268 lbs.	KMS-3010	294 lbs.	KMS-3610	315 lbs.
132"	KMS-2411	301 lbs.	KMS-3011	331 lbs.	KMS-3611	358 lbs.
144"	KMS-2412	316 lbs.	KMS-3012	346 lbs.	KMS-3612	373 lbs.

KMG-Series: Galvanized Steel Legs & Undershelf

L	24" Wide	Wt.	30" Wide	Wt.	36" Wide	Wt.
30"	KMG-240	55 lbs.	KMG-300	70 lbs.		
24"	KMG-242	50 lbs.	KMG-302	56 lbs.	KMG-362	86 lbs.
36"	KMG-243	66 lbs.	KMG-303	77 lbs.	KMG-363	92 lbs.
48"	KMG-244	81 lbs.	KMG-304	92 lbs.	KMG-364	101 lbs.
60"	KMG-245	95 lbs.	KMG-305	111 lbs.	KMG-365	121 lbs.
72"	KMG-246	113 lbs.	KMG-306	129 lbs.	KMG-366	142 lbs.
84"	KMG-247	135 lbs.	KMG-307	153 lbs.	KMG-367	169 lbs.
96"	KMG-248	150 lbs.	KMG-308	171 lbs.	KMG-368	189 lbs.
108"	KMG-249	165 lbs.	KMG-309	195 lbs.	KMG-369	260 lbs.
120"	KMG-2410	268 lbs.	KMG-3010	294 lbs.	KMG-3610	315 lbs.
132"	KMG-2411	301 lbs.	KMG-3011	331 lbs.	KMG-3611	358 lbs.
144"	KMG-2412	316 lbs.	KMG-3012	346 lbs.	KMG-3612	373 lbs.

