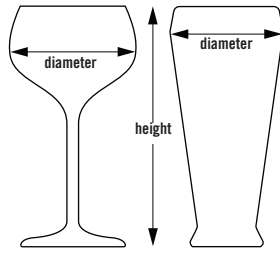


# HALF SIZE CAMRACKS® FOR STEMWARE & TUMBLERS

- Very effective for carrying less weight and for storing drinkware in space-restricted locations.
- Ideal for small under-counter glasswashers.



10HS434

## 8 COMPARTMENT

**4<sup>1</sup>/<sub>16</sub>"** 4.06" (10,3 cm)  
MAXIMUM DIAMETER



	<b>3<sup>5</sup>/<sub>8</sub>"</b> 3.625" (9,2 cm)	<b>5<sup>1</sup>/<sub>4</sub>"</b> 5.25" (13,3 cm)	<b>6<sup>7</sup>/<sub>8</sub>"</b> 6.875" (17,4 cm)	<b>8<sup>1</sup>/<sub>2</sub>"</b> 8.5" (21,5 cm)	<b>10<sup>1</sup>/<sub>8</sub>"</b> 10.125" (25,7 cm)	<b>11<sup>3</sup>/<sub>4</sub>"</b> 11.75" (29,8 cm)
<b>MAXIMUM HEIGHT</b>						
<b>CODE</b>	8HS318	8HS434	8HS638	8HS800	8HS958	8HS1114
<b>CASE PACK</b>	5	4	3	2	2	2
<b>RACK DIMENSION</b>	19 <sup>3</sup> / <sub>4</sub> " x 10" x 5 <sup>5</sup> / <sub>8</sub> " 50 x 25 x 14,3 cm	19 <sup>3</sup> / <sub>4</sub> " x 10" x 7 <sup>1</sup> / <sub>4</sub> " 50 x 25 x 18,4 cm	19 <sup>3</sup> / <sub>4</sub> " x 10" x 8 <sup>7</sup> / <sub>8</sub> " 50 x 25 x 22,5 cm	19 <sup>3</sup> / <sub>4</sub> " x 10" x 10 <sup>1</sup> / <sub>2</sub> " 50 x 25 x 26,7 cm	19 <sup>3</sup> / <sub>4</sub> " x 10" x 12 <sup>1</sup> / <sub>8</sub> " 50 x 25 x 30,8 cm	19 <sup>3</sup> / <sub>4</sub> " x 10" x 13 <sup>3</sup> / <sub>4</sub> " 50 x 25 x 34,9 cm

## 10 COMPARTMENT

**3<sup>7</sup>/<sub>16</sub>"** 3.44" (8,7 cm)  
MAXIMUM DIAMETER



	<b>3<sup>5</sup>/<sub>8</sub>"</b> 3.625" (9,2 cm)	<b>5<sup>1</sup>/<sub>4</sub>"</b> 5.25" (13,3 cm)	<b>6<sup>7</sup>/<sub>8</sub>"</b> 6.875" (17,4 cm)	<b>8<sup>1</sup>/<sub>2</sub>"</b> 8.5" (21,5 cm)	<b>10<sup>1</sup>/<sub>8</sub>"</b> 10.125" (25,7 cm)	<b>11<sup>3</sup>/<sub>4</sub>"</b> 11.75" (29,8 cm)
<b>MAXIMUM HEIGHT</b>						
<b>CODE</b>	10HS318	10HS434	10HS638	10HS800	10HS958	10HS1114
<b>CASE PACK</b>	5	4	3	2	2	2
<b>RACK DIMENSION</b>	19 <sup>3</sup> / <sub>4</sub> " x 10" x 5 <sup>5</sup> / <sub>8</sub> " 50 x 25 x 14,3 cm	19 <sup>3</sup> / <sub>4</sub> " x 10" x 7 <sup>1</sup> / <sub>4</sub> " 50 x 25 x 18,4 cm	19 <sup>3</sup> / <sub>4</sub> " x 10" x 8 <sup>7</sup> / <sub>8</sub> " 50 x 25 x 22,5 cm	19 <sup>3</sup> / <sub>4</sub> " x 10" x 10 <sup>1</sup> / <sub>2</sub> " 50 x 25 x 26,7 cm	19 <sup>3</sup> / <sub>4</sub> " x 10" x 12 <sup>1</sup> / <sub>8</sub> " 50 x 25 x 30,8 cm	19 <sup>3</sup> / <sub>4</sub> " x 10" x 13 <sup>3</sup> / <sub>4</sub> " 50 x 25 x 34,9 cm

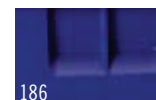
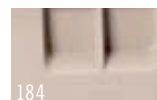
## 17 COMPARTMENT

**2<sup>7</sup>/<sub>8</sub>"** 2.875" (7,3 cm)  
MAXIMUM DIAMETER



	<b>3<sup>5</sup>/<sub>8</sub>"</b> 3.625" (9,2 cm)	<b>5<sup>1</sup>/<sub>4</sub>"</b> 5.25" (13,3 cm)	<b>6<sup>7</sup>/<sub>8</sub>"</b> 6.875" (17,4 cm)	<b>8<sup>1</sup>/<sub>2</sub>"</b> 8.5" (21,5 cm)	<b>10<sup>1</sup>/<sub>8</sub>"</b> 10.125" (25,7 cm)	<b>11<sup>3</sup>/<sub>4</sub>"</b> 11.75" (29,8 cm)
<b>MAXIMUM HEIGHT</b>						
<b>CODE</b>	17HS318	17HS434	17HS638	17HS800	17HS958	17HS1114
<b>CASE PACK</b>	5	4	3	2	2	2
<b>RACK DIMENSION</b>	19 <sup>3</sup> / <sub>4</sub> " x 10" x 5 <sup>5</sup> / <sub>8</sub> " 50 x 25 x 14,3 cm	19 <sup>3</sup> / <sub>4</sub> " x 10" x 7 <sup>1</sup> / <sub>4</sub> " 50 x 25 x 18,4 cm	19 <sup>3</sup> / <sub>4</sub> " x 10" x 8 <sup>7</sup> / <sub>8</sub> " 50 x 25 x 22,5 cm	19 <sup>3</sup> / <sub>4</sub> " x 10" x 10 <sup>1</sup> / <sub>2</sub> " 50 x 25 x 26,7 cm	19 <sup>3</sup> / <sub>4</sub> " x 10" x 12 <sup>1</sup> / <sub>8</sub> " 50 x 25 x 30,8 cm	19 <sup>3</sup> / <sub>4</sub> " x 10" x 13 <sup>3</sup> / <sub>4</sub> " 50 x 25 x 34,9 cm

### Base Rack Colors:



**Extender Color:** Soft Gray (151). Personalization available. See Camrack personalization and color coding page. Contact Customer Service for all special orders.