

TOP MODIFICATIONS



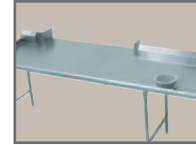
TA-56
5" NSF Partition



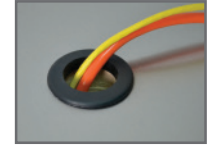
TA-523
Drop-In Urn Trough



CDR-5
Condiment Holder



TA-84
Pass-Thru



TA-108
Grommet For Cords

QTY.

_____	CDR-5	Condiment Holder (Accommodates 5 Bins)
_____	TA-1	Notch Backsplash For Roll Up Door w/ Pass-Thru
_____	TA-3	Stainless Steel Hat Channel & Gusset Upgrade
_____	TA-7	10" Partial Splash
_____	TA-8	Column Notch in Rear Splash (Includes Splash)
_____	TA-10	5" Partial Splash
_____	TA-12	Countertop Edge
_____	TA-22	Square Edge Table
_____	TA-28	Cut-Out For Cold Well. Includes Louvered Doors
_____	TA-29	16 Ga. 304 Rear Splash Capping Strip w/Adhesive Backing
_____	TA-30	1-1/2" Side Splash
_____	TA-30A	1-1/2" Turn Up For Table Tops
_____	TA-31	5" Side Splash
_____	TA-32	10" Side Splash
_____	TA-34	Top Cut-Out
_____	TA-34A	Top Cut-Out for Undermount Well
_____	TA-35	Splash Cut-Out
_____	TA-41	Poly-Vance 5/8" Cutting Board
_____	TA-56	5" NSF Partition
_____	TA-56A	18" NSF Partition
_____	TA-57	Prepare Welded Field Joint (Welded in field by others)
_____	TA-57A	Bolted Field Joint (Bolted in field by others)
_____	TA-57B	Hairline Field Joint
_____	TA-58	Stepdown to 24" Working Height
_____	TA-64	Urn Trough (Factory installation only)
_____	TA-75	Mitered Edge
_____	TA-76	Paint on Sound Deadening
_____	TA-79	Flour Trough (Factory installation only)
_____	TA-82	Scrap Chute (6" dia. opening)
_____	TA-84	Simple Pass-Thru
_____	TA-87	Enclosed Rear Splash
_____	TA-91	Poly Retaining Clips Includes TA-22 (S/S top table)

QTY.

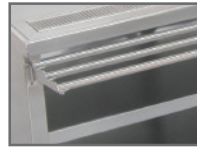
_____	TA-93	Wall Brackets (Includes 2. For 5" & 10 1/2" splash only)
_____	TA-96A	Can Opener Provision for Openers with Bolt-on Base (Customer to provide location)
_____	TA-96B	Can Opener Surface Mount Provision with 4" S/S Tube for Openers w/o Base (Customer to provide location)
_____	TA-96C	Can Opener Spacer Plate Provision for Use on Tables With Countertop Edge & Can Opener Base (Customer to provide location)
_____	TA-100	Bull Nose All Sides of Worktable
_____	TA-101	Rear Tray Lock
_____	TA-106	Mirror HI-LITE Edge
_____	TA-107	Vacuum Breaker Holes on Tables (Includes Backsplash with 2" Return)
_____	TA-108	2" Hole with Grommet for Appliance Cord
_____	TA-112	Hubble Outlet
_____	TA-113	Notch Top for Buyout Unit
_____	TA-130	Cutlery Dispenser Holder (Undercounter Mounted)
_____	TA-135	Plate Shelf (Undercounter Mounted)
_____	TA-366A	Heavy duty Understructure Top
_____	TA-502	Install Advance Tabco Hot Food Unit In Work Table Top (Requires TA-34 Top Cut-Out & TA-27 Control Panel. Does not include wiring. Consult factory)
_____	TA-521	Drop-In urn Trough 1'
_____	TA-522	Drop-In urn Trough 2'
_____	TA-523	Drop-In urn Trough 3'
_____	TA-524	Drop-In urn Trough 4'
_____	TA-525	Drop-In urn Trough 5'
_____	TA-526	Drop-In urn Trough 6'
_____	TA-527	Drop-In urn Trough 7'
_____	TA-528	Drop-In urn Trough 8'
_____	TA-529	Drop-In urn Trough 9'
_____	TA-550	Install Customer Supplied Buyout Items (Does not include wiring. Consult factory)
_____	TA-551	Installation of Hot Food Wells. (Requires TA-34 Top Cut-Out & TA-27 Control Panel. Does not include wiring. Consult factory)

TABLE MODIFICATIONS & ACCESSORIES

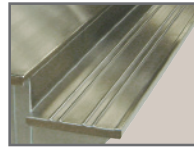
BASE MODIFICATIONS



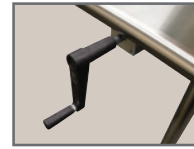
TA-39
Louvered Hinged Doors



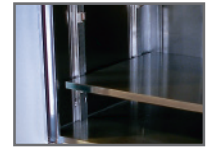
TA-73
Drop-Down Tray Slide



TA-74
Solid Tray Slide



TA-900
ADJ. Height Tables



TA-116
Adj. Mid-Shelf

QTY.

___	TA-4	Removable Access Panel
___	TA-4A	Louvered Panel
___	TA-5	Curb Mounting Provision
___	TA-15	Provision for Built In Drawer Warmer
___	TA-23	Welded Set-Up Table/Crating
___	TA-24	Shell Crating
___	TA-27	Control Panel (Must add TA-34A or TA-34B)
___	TA-36A	Sliding/Hinge Stainless Steel Doors
___	TA-36B	1/2 Height Stainless Steel Hinge Doors
___	TA-36C	Hinged door with Trash Flap
___	TA-37	Stainless Enclosed Base
___	TA-39	24" Louvered Hinged Doors
___	TA-40	Remove Undershef in Cabinet Base For Slide in Buyout
___	TA-42	Interior Partition (2.5"x30")
___	TA-43	Filler Panel (3"x30" with Flanged Feet)
___	TA-44	K.D. Aluminum Pan Rack Slides (6 slides. Table min. lgth. 30")
___	TA-45	K.D. Aluminum Glass Rack Slides (3 slides. Table min. lgth. 3 feet)
___	TA-46	Door Locks

QTY.

___	TA-48	12"x12" Cut-Out in Back Panel/Undershef for Plumbing
___	TA-54	Removable Kick Plate
___	TA-55	Remove Back Panel (on Enclosed Base)
___	TA-63	Removable Shelving (In addition to standard shelf & table width)
___	TA-70	S/S Tubular Tray Divider (12" sections)
___	TA-73	Tubular Tray Slide w/Dropdown (Stationary Tray Slide Available. Factory installation only)
___	TA-74	Solid Tray Slide
___	TA-92	12" Apron (in front of sink)
___	TA-92A	17" Stainless Steel Apron to Cover Sink Bowls and Support Lever Drain Handles
___	TA-116	Adjustable Enclosed Base Cabinet Mid Shelf- Add to Price of Enclosed Base Table with Fixed Mid Shelf (M). Shelves Over 36" In Length Require Multiple Sections With Center Partition. For Partial Shelves Add To Price Of Shelf.
___	TA-130	Cutlery Dispenser Holder (Undercounter Mounted)
___	TA-135	Plate Shelf (Undercounter Mounted)
___	TA-205	Connect Cafeteria Items (Per Joint Between 2 Tables. Requires Casters)
___	TA-900	Upgrade Table To be Height Adjustable In Field (Up to 6" Only. Unit Ships Set Up)

ELECTRICAL & DATA PORT OUTLETS



TA-62
Duplex Outlet



TA-62A
GFI Duplex Outlet



TA-62D
GFI Doghouse Outlet



TA-62F
Empty Junction Box



TA-112
Hubble Outlet

QTY.

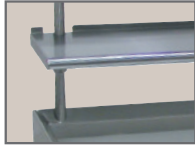
___	TA-62	Standard Duplex Electrical Outlet & Cover Plate (Under Flat Top). NEMA 5-15R
___	TA-62A	GFI Duplex Outlet & Cover Plate in a VKS Splash. NEMA 5-20R
___	TA-62C	GFI Duplex Outlet & Cover Plate Below Shelf Top. NEMA 5-20R
___	TA-62D	GFI Duplex Outlet & Cover Plate in a Doghouse. NEMA 5-20R

QTY.

___	TA-62E	Upgrade Outlet to a NEMA 6-20R or Equiv.
___	TA-62F	Junction Box (empty) Below Table Top. Includes 1 Gang Size, Stainless Steel Face Plate
___	TA-112	Hubble Outlet
___	TA-622	CAT-5 Data Port Outlet. Cable Not Included

TABLE MODIFICATIONS & ACCESSORIES

OVERSHELF & POT RACK MODIFICATIONS



TA-9A
1" Turn Up



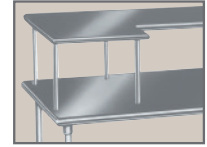
TA-22A
Square Edge



TA-71
Heat Lamp Mounting Provision



TA-100A
Bull Nose



TA-102
24" x 24" Extension

QTY.

- _____ **TA-9A** Partial 1" Turn-Up for all Table Mt. Shelves
- _____ **TA-22A** Square Edge on Oversheff
- _____ **TA-26-10** Welded Wall Shelf Brackets for 10" Wide Shelf
- _____ **TA-26-12** Welded Wall Shelf Brackets for 12" Wide Shelf
- _____ **TA-26-15** Welded Wall Shelf Brackets for 15" Wide Shelf
- _____ **TA-26-18** Welded Wall Shelf Brackets for 18" Wide Shelf
- _____ **TA-47** Shelf Mounting Bracket for Existing Table
- _____ **TA-49** Wall Shelf 2" Offset
- _____ **TA-60** Special Sizing Charge for Shelves (Must Order Larger Unit to be Cut Down to Smaller Size)
- _____ **TA-71** Heat Lamp Mounting Provision
- _____ **TA-71A** Heat Lamp Remote Control Bracket
- _____ **TA-78** Additional Lin. Ft. Past 12' For Table Mt. Shelf (For ODS, OTS, TS, DS & WS Shelving only)
- _____ **TA-77** Check Minder Shelf Provision (Factory install only)
- _____ **TA-83** Spice Bins

QTY.

- _____ **TA-84A** Knife Rack for Rolled Rim Tables
- _____ **TA-84B** Knife Rack for Poly Top Tables
- _____ **TA-84C** Knife Rack for Square Edge Tables
- _____ **TA-86** Stainless Steel Pot Hooks
- _____ **TA-89** Double Sided Plated Pot Hooks (Package of 4)
- _____ **TA-89A** Single Sided Plated Pot Hooks (Package of 4)
- _____ **TA-98** Stainless Steel Flat Bar in lieu of Chain
- _____ **TA-99** 16 Ga. S/S 304 Upgrade for Wall & Over Shelves
- _____ **TA-100A** Bull Nose All Sides of Shelf
- _____ **TA-100R** Bull Nose Three Sides of Shelf w/ Rear Turn Up
- _____ **TA-102** 24" x 24" Extension for Microwave or Computer Shelf (Add to OTS and ODS Shelves. See page 65)
- _____ **TA-103** 24" Wide PT Shelf (36" Min Length. Mid mount only. PT Series Shelf, See Pg. 73. Add to 18" Wide Shelf)
- _____ **TA-104** Additional Length Over 12' (Add to 18" Shelf. (PA & CU Shelving Only. Max. Length is 14' as Single Piece)

UNDERSHELF MODIFICATIONS

QTY.

- _____ **TA-9** 1-1/2" Turn-Up for Undershelves
- _____ **TA-17** Upgrade Undersheff to a Marine Edge (Must add TA-23)
- _____ **TA-48** 12"x12" Cut-Out in Back Panel or Undersheff for Plumbing

QTY.

- _____ **TA-94** Upgrade 16 Ga. 304 S/S Undersheff
- _____ **TA-94A** Upgrade 14 Ga. 304 S/S Undersheff
- _____ **TA-366** Reinforced Understructure For Undershelves

SIZE MODIFICATIONS

QTY.

- _____ **TA-33** Special Working Height
- _____ **TA-59** 36" Wide Equipment Stand
- _____ **TA-6** Extra Length for Standard Tables Over 12' (Tables Over 14' Require Field Joint TA-57)
- _____ **TA-61** Special Sizing Charge (Larger Unit Cut Down to Smaller Size)
- _____ **TA-61A** Special Modification Charge

QTY.

- _____ **TA-65** Enclosed Base Units Over 12' (Open Base Table)
- _____ **TA-66** Enclosed Base Units Over 12' (Sliding Door Units)
- _____ **TA-67** Enclosed Base Units Over 12' (Hinged Door Units)
- _____ **TA-105** Modify Enclosed Base Table w/ Drawers to 24" Width
- _____ **TA-110** Modify Enclosed Base Table w/ Drawers to 36" Width

TABLE MODIFICATIONS & ACCESSORIES

LEG MODIFICATIONS

QTY.			QTY.		
_____	TA-16	1 Galvanized Leg with Plastic Bullet Foot (34 1/2" Total Length)	_____	TA-20-6	6 Stainless Steel Leg with S/S Bullet Feet (34 1/2" Total Length)
_____	TA-16-4	4 Galvanized Legs with Plastic Bullet Feet (34 1/2" Total Length)	_____	TA-20L	Replacement Bolt-on Leg For Enclosed Base Table
_____	TA-16-6	6 Galvanized Legs with Plastic Bullet Feet (34 1/2" Total Length)	_____	TA-21	Stainless Steel Bullet Foot
_____	TA-19	Stainless Steel Flanged Bullet Foot For Work Table	_____	TA-68	Relocate Rear Cross Rail To Center (for Open Base Tables Only)
_____	TA-19L	S/S Bolt-on Leg w/ Flanged Foot For Enclosed Base Table	_____	TA-72	Leg to Wall Brace (Set per table)
_____	TA-20	1 Stainless Steel Leg with S/S Bullet Foot (34 1/2" Total Length)	_____	TA-95	Upgrade 16 Ga. 304 S/S Legs Only
_____	TA-20-4	4 Stainless Steel Leg with S/S Bullet Feet (34 1/2" Total Length)			

WORK TABLE CASTERS



Standard Casters

Maintains the Standard 35-1/2" Working Height

200 lbs. Load Capacity Per Caster

When Used w/ Stainless Steel Legs

TA-25S-4 Set of 4 (Two with Brakes)

TA-25S-6 Set of 6 (Two with Brakes)

When Used w/ Galvanized Legs

TA-25G-4 Set of 4 (Two with Brakes)

TA-25G-6 Set of 6 (Two with Brakes)

Replacement Casters

For Work Tables

TA-25 Set of 4
(Two with Brakes)

TA-25A Set of 6
(Two with Brakes)

200 lbs. Load Capacity Per Caster



Optional Standard Caster Upgrades:

TA-25B Set	For brakes on all wheels (Standard Casters) - Add price to the following models: TA-25, TA-25A, TA-25S-4, TA-25S-6, TA-25G-4, TA-25G-6
TA-25C Per Caster	Upgrade Standard Caster with Heavy Duty Urethane Wheels (Per Caster)

EQUIPMENT STAND CASTERS



Standard Casters

5" Urethane Wheels.

Maintains the Standard 24" Working Height

200 lbs. Load Capacity Per Caster

w/ Stainless Steel Legs

TA-25ES Set of 4 (Two with Brakes)

w/ Galvanized Legs

TA-25EG Set of 4 (Two with Brakes)

HEAVY DUTY Casters

5" Urethane Wheels

400 lbs. Load Capacity Per Caster

TA-255 Super Heavy Duty
Set of 4 (Two with Brakes)

TA-256 Super Heavy Duty
Set of 6 (Two with Brakes)



Enclosed Base Table Casters

Easy Bolt-On Style



TA-255P Set of 4 (Two with Brakes)

TA-255AP Set of 6 (Two with Brakes)

300 lbs. Load Capacity Per Caster

For brakes on all wheels (Enclosed Base Casters) - Add price to models: TA-255P or TA-255AP

TA-255PB

Optional Equipment Stand Caster Upgrade:

TA-255B For brakes on all wheels (Equipment Casters) - Add price to any of the following models: TA-255, TA-256, TA-25ES, TA-25EG

Contact Our SMART FABRICATION™ Department for more information at 800-645-3166 or email in your specifications to smartfab@advancetabco.com