

PRODIGY[®] ELITE

MC0330 - 300lb Cube Ice Machine

Prodigy ELITE[®] Modular Cube Ice Machine

ENHANCED RELIABILITY

Integrated ICELINQ[®] App

Provides real-time diagnostics, access to settings and guided cleanings. The app also contains specific information for convenient maintenance.

Upgraded Sensors

Ice thickness and water sensor design enhances cleanability and amplifies durability.

Preservation Mode

Maximizes uptime and notifies users of potential issues.

EASE OF USE

AutoAlert[™] Panel

The AutoAlert[™] panel displays relevant machine status that is visible across the room. Now featuring an external bin full indicator light and easier to read 16-segment display.

SANITARY DESIGN

Removable, External Air Filters

Speeds up cleaning process and reduces unit footprint.

WaterSense Adaptive Purge

Optimizes water consumption, keeping the machine cleaner and operating more efficiently.



Compatible with ICELINQ[®]



The ICELINQ[®] app simplifies interaction with machine via Bluetooth[®] connection



Intelligent sensor technology maximizes efficiency and lowers operating costs



24 Hour Volume Production

Air Cooled			Water Cooled		
70°F/21°C	Air	90°F/32°C	70°F/21°C	Air	90°F/32°C
50°F/10°C	Water	70°F/21°C	50°F/10°C	Water	70°F/21°C
400/182		288/131	420/191		326/148
lb/kg		lb/kg	lb/kg		lb/kg



Modular Bin Options

Model Number*	Dimensions W" x D" x H"	Bin Application Capacity lb/kg	Bin Options		Ship Weight lb/kg
			Finish	Model	
B330P	30 x 34 x 36	344/156	Poly	B330P	130/59
B530S or P	30 x 34 x 50	536/244	Metallic or Poly	B530S	150/68

* Contact Scotsman for bin top requirements.



Cube Ice

Common ice form, ideal for mixed drinks.



Small Cube
7/8" x 7/8" x 3/8"
(2.22 x 2.22 x .95 cm)



Medium Cube
7/8" x 7/8" x 7/8"
(2.22 x 2.22 x 2.22 cm)



Certification



ICELINQ



Warranty

- 3 Years parts and labor on all components.
- 5 Years parts and labor on the evaporator.
- 5 Years parts on the compressor and condenser.
- Warranty valid in North, South & Central America for commercial installations.
- Contact factory for warranty in other regions.
- Residential Applications: 1 year parts and labor

Scotsman[®]

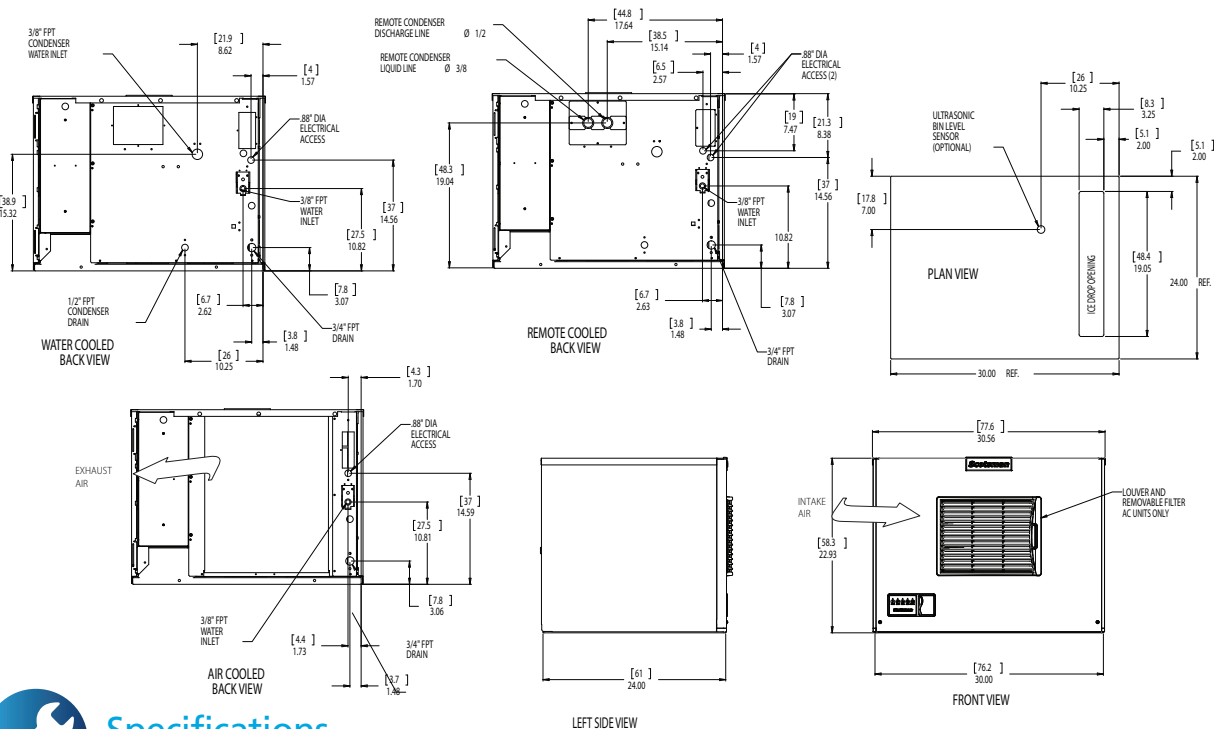
101 Corporate Woods Parkway, Vernon Hills, IL 60061

1-800-SCOTSMAN | Fax: 847-913-9844 | www.scotsman-ice.com | customer.relations@scotsman-ice.com

MC0330 - 300lb Cube Ice Machine

MC0330 - 300lb Cube Ice Machine

Prodigy ELITE® Modular Cube Ice Machine



Specifications

Model Number	Condenser Unit	Basic Electrical Volts/Hz/Phase	Max. Fuse Size or HACR Circuit Breaker (amps)	Circuit Wires	Min. Circuit Ampacity	Energy Consumption kWh/100 lb (45.4 kg) 90°F(32°C)/70°F(21°C)	Water Usage Gallons/100 lb (liters/45.4 kg) 90°F(32°C)/70°F(21°C)	
							Potable	Condenser
Cube Size: medium or small								
med. MC0330MA-1	Air	115/60/1	15	2	14.3	6.23	18.0/68.1	-
MC0330MW-1	Water	115/60/1	15	2	13.5	4.97	18.0/68.1	139.0/526.2
MC0330MA-32	Air	208-230/60/1	15	2	7.1	6.23	18.0/68.1	-
sm. MC0330SA-1	Air	115/60/1	15	2	14.3	6.23	18.0/68.1	-
MC0330SW-1	Water	115/60/1	15	2	13.5	4.97	18.0/68.1	139.0/526.2



All Models

Dimensions (W x D x H):

Unit: 30" x 24" x 23"
(76.2 x 61.0 x 58.4 cm)

Shipping Carton: 33.5" x 27.5" x 28"
(85.1 x 69.9 x 71.1 cm)

Shipping Weight: 155 lb / 70 kg

BTUs per hour: 5,200

Refrigerant: R-404A



Accessories

Model Number	Description
KVS	Vari-Smart™ Ice Level Control - Precisely control ice levels using ultrasonic technology.
KBILC	Basic Ice Level Control - Thermistor technology, ideal for dispenser applications.
KSBU	Smart-Board™ Advanced Control - Use additional operational data for fast diagnosis.
KSBU-N	Smart-Board™ Advanced Control with Network - Network capable.
KPAS	Prodigy Advanced Sustainability Kit - Includes KVS and KSBU - N
XR-30	XSafe® Sanitation System for Modular Cube - Continuous operation, field-installed.

Scotsman recommends all ice machines have water filtration. See Scotsman water filter specification sheet for details.



Operating Requirements

	Minimum	Maximum
Air Temperatures	50°F (10°C)	100°F (38°C)
Water Temperatures	40°F (4.4°C)	100°F (38°C)
Remote Cond. Temps	-20°F (-29°C)	120°F (49°C)
Potable Water Pressure	20 PSIG (1.4 bar)	80 PSIG (5.5 bar)
Cond. Water Pressure	20 PSIG (1.4 bar)	230 PSIG (16.1 bar)
Electrical Voltage	-5%	+10%

Specifications and design are subject to change without notice.

iceValet®

HD30 - 30" Hotel Dispenser

iceValet® Hotel Dispenser



Features

- Stores up to 180 lb. of cube ice.
- Simple push chute for easy ice dispensing.
- Modern, stylish design in a corrosion resistant metallic cabinet.
- Removable top panel allows access to the bin for easy cleaning without having to remove the ice machine.
- Improved sink depth that will accommodate almost every size hotel ice bucket.
- ADA compliant dispensing area.
- Equipped with an 11 ft. power cord.
- Match the iceValet® dispenser with a Scotsman Prodigy Plus® ice machine featuring self-monitoring technology, cost-saving energy efficiency, extended time between cleanings, easy-access servicing and built-in anti-microbial protection. All of these features add up to the smartest choice in ice.



Optional sanitary lever dispensing kit available (KHDSANLV)



Standard easy push chute



Storage Capacity

HD30

Application Bin Capacity

180/81
lb/kg



Matching Ice Machine Options

Model Number	Cube Size	Condenser Type	24 Hr Ice Production		
			70°F/21°C 50°F/10°C lb/kg	Air Water	90°F/32°C 70°F/21°C lb/kg
C0330MA	Medium	Air	350/159		288/131
C0330MW	Medium	Water	400/182		326/148
C0330SA	Small	Air	350/159		288/131
C0330SW	Small	Water	400/182		326/148
C0530MA	Medium	Air	525/238		380/172
C0530MW	Medium	Water	500/227		410/186
C0530SA	Small	Air	525/238		380/172
C0530SW	Small	Water	500/227		410/186

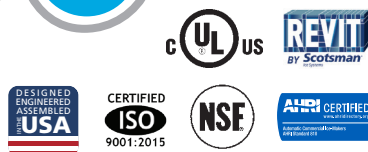


Polyurethane Insulation

Foam insulation is forced between the wall and liner under heat and pressure to form a perfect wall to wall bond, preserving ice supply for long periods.



Certification



Warranty

- 3 years parts and labor on all components.
- Warranty valid in North, South & Central America for commercial installations.
- Contact factory for warranty in other regions.
- Residential Applications: 1 year parts and labor

HD30 - 30" Hotel Dispenser

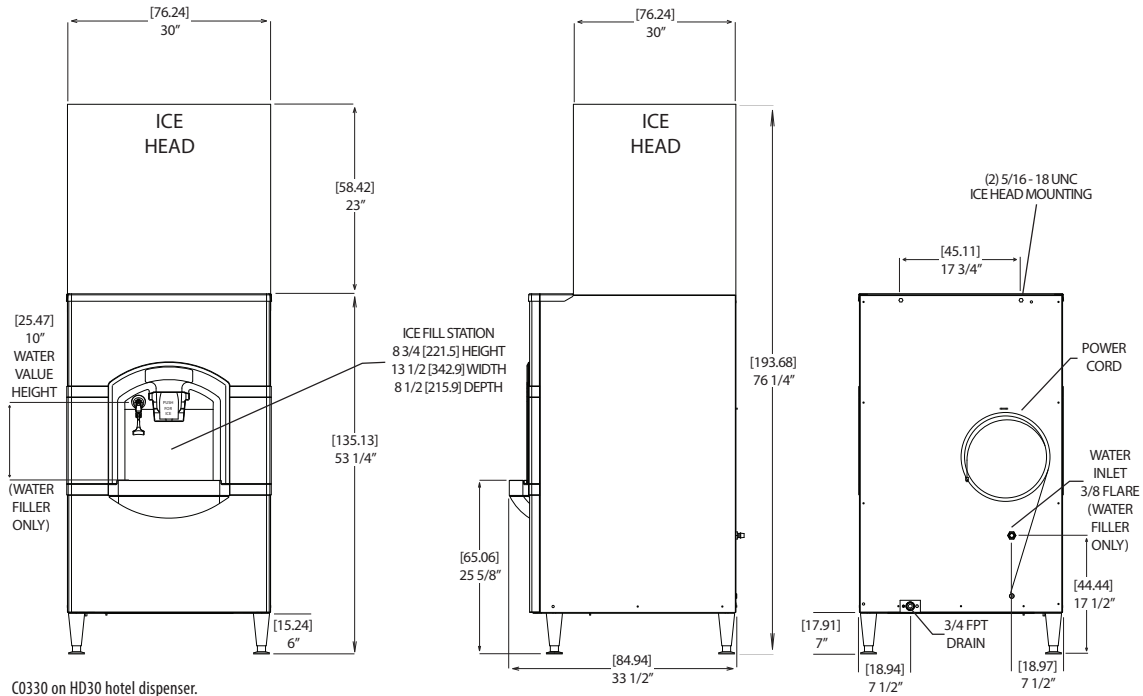
Scotsman®

- 101 Corporate Woods Parkway, Vernon Hills, IL 60061 •
- 1-800-SCOTSMAN • Fax: 847-913-9844 • www.scotsman-ice.com • customer.relations@scotsman-ice.com •

HD30 - 30" Hotel Dispenser

iceValet® Hotel Dispenser

Installation Note: Allow 6" space at left, back and right side for ventilation and utility connections.



Specifications

Model Number	Actuation	Application Bin Capacity lb/kg	Electrical	Circuit Wires	Min. Circuit Ampacity	Max. Fuse Size or HACR Circuit Breaker (amps)
HD30B-1	Push	180/81	115/60/1	2	Cord	15
HD30W-1*	Push	180/81	115/60/1	2	Cord	15

*Unit comes with a water spout next to ice chute



All Models

Dimensions (W x D x H):

Unit: 30" x 33.5" x 47.25"
(76.2 x 85.1 x 120.0 cm)

Shipping Carton: 33" x 37" x 53"
(83.8 x 94 x 134.6 cm)

Shipping Weight:

HD30B-1: 220 lb / 100 kg
HD30W-1: 224 lb / 102 kg



Accessories

Model Number	Description
KHDSANLV	Sanitary lever dispensing kit, for HD models

Scotsman recommends all ice machines have water filtration. See Scotsman water filter specification sheet for details.



Operating Requirements

	Minimum	Maximum
Air Temperatures	50°F (10°C)	100°F (38°C)
Water Temperatures	40°F (4.4°C)	100°F (38°C)
Remote Cond. Temps	-20°F (-29°C)	120°F (49°C)
Water Pressures	20 PSIG (1.4 bar)	80 PSIG (5.5 bar)
Electrical Voltage	-5%	+10%

Specifications and design are subject to change without notice.

HD30 - 30" Hotel Dispenser