

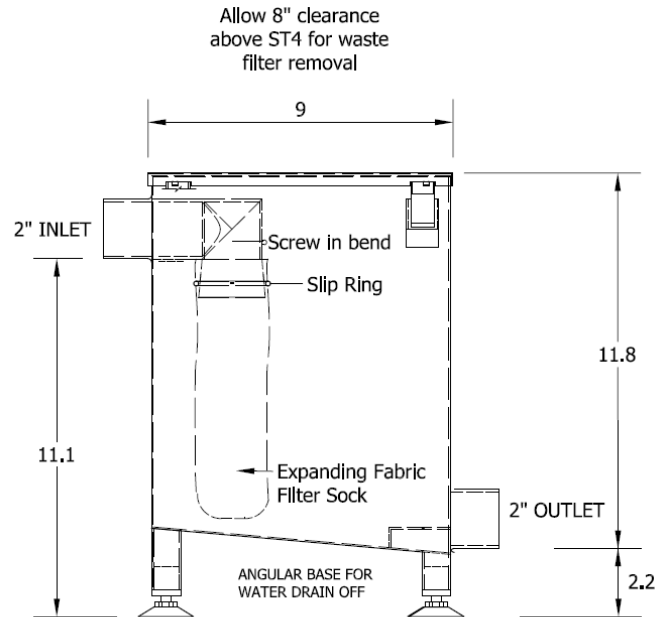


## COFFEE GUARDIAN INSTALLATION NOTES

- The ST4 Coffee Guardian should be connected to a sink waste pipe using the 2" rubber coupling provided.
- Ensure adequate clearance is provided for removal of the fabric filter (8") or strainer basket (10") as indicated on the drawings.
- Ensure that a gravity fall of 1/8" per foot or greater is provided to the waste water outlet.
- As this unit is a 'dry' tank, it does not require a fill level after installation
- The ST4 is supplied with adjustable feet for precise alignment on the inlet and outlet plumbing

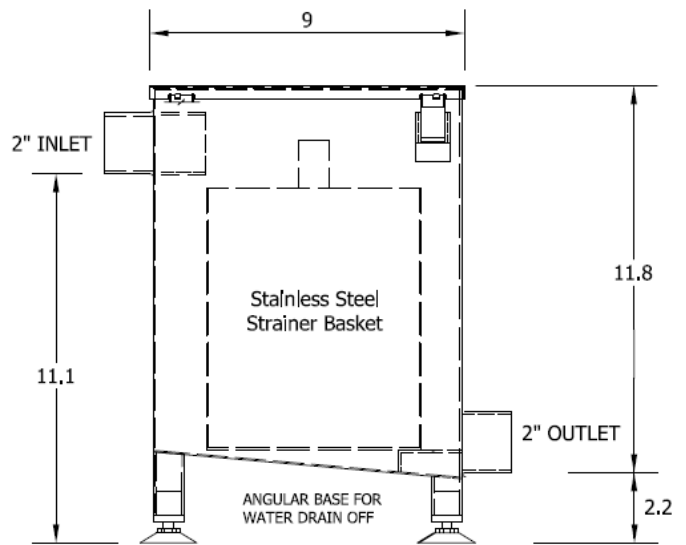
## MAINTENANCE NOTES

- Fabric filter (if used) to be replaced when sock expands to twice its original size, or when the kitchen sink drainage appears to be reduced.
- To replace filter, remove main lid and remove filter sock from down pipe by lifting the internal slip ring upwards which will release the filter sock.
- Dispose of filter and contents into a food waste bin.
- Replace new filter sock by sliding the slip ring back over the sock neck lining.



SIDE VIEW

Allow 10" clearance  
above ST4 for strainer  
basket removal



SIDE VIEW

PRODUCT CHARACTERISTICS			
	TANK	FABRIC FILTER	METAL STRAINER
MATERIAL	STAINLESS STEEL, 304, 18 GAUGE	ELASTHAN	STAINLESS STEEL 1/8" PERFORATIONS
VOLUME	4.35 GALLON	2.2 LBS	15.4 LBS

## GREASE GUARDIAN ST4 COFFEE GUARDIAN