



Model: _____ Item #: _____ Date: _____

Project: _____ Qty: _____ Approved By: _____

Hand Sinks with Electronic Faucets

Hand Sinks

HS-11

16" Wide Hand Sink with Electronic Faucet



HS-12

16" Wide Hand Sink with Electronic Faucet,
P-Trap & Overflow



HS-13

16" Wide Hand Sink with Electronic Faucet,
P-Trap, Overflow and Soap & Towel Dispenser



Specifications

Fabrication	▪ 20 gauge stainless steel
Bowl	▪ 12-1/2"W x 9-3/4"L x 5-5/8" Deep drawn bowl with stamped rim to prevent spillage
Wall Mount Bracket	▪ Offset design for added strength
Faucet	▪ Single Hole Wall Mount Electronic Sensor Faucet
Drain	▪ 1-1/2" Stainless steel drain
Drain with Overflow	▪ Stainless steel with plastic overflow tube and inlet (supplied with those sinks that contain an overflow hole)
Plumbing	▪ 1/2" IPS hot and cold water. 1-1/2" IPS drain outlet. Install at 36" working height. 1/2" faucet supply 12" from floor. 1-1/2" drain line 23-1/4" from floor.
Lead Free	▪ Faucet included is certified to NSF/ANSI 61 and 372 and conforms with the lead content requirements for lead free plumbing as defined by the U.S. Safe Drinking Water Act. Hand sink is certified NSF-2.

Optional Accessories

Model	Description
23-157	Overflow Assembly
H-100	Chrome Plated 1-1/2" IPS P-Trap
H-101	Deck Mount Soap Dispenser
H-105	Wall Mount Towel Dispenser
H-108-2	16"W x 15"D Stainless Steel Skirt, Factory Installed
H-108-9	12"W x 17"D Stainless Steel Skirt, Factory Installed
H-110	Side Support Brackets
H-111	16"W Soap & Towel Dispenser
H-115	12"W Soap & Towel Dispenser
H-116	Wall Mount Soap Dispenser
FG-L2	15"D Factory Installed Left Side Splash
FG-R2	15"D Factory Installed Right Side Splash
FG-LR2	15"D Factory Installed Left & Right Side Splashes
SG-L2	15"D Field Installed Left Side Splash
SG-R2	15"D Field Installed Right Side Splash
SG-LR2	15"D Field Installed Left & Right Side Splashes

⚠ Warning: This product can expose you to chemicals including lead and lead compounds which are known to the State of California to cause cancer and birth defects or other reproductive harm. For more information go to www.P65Warnings.ca.gov.





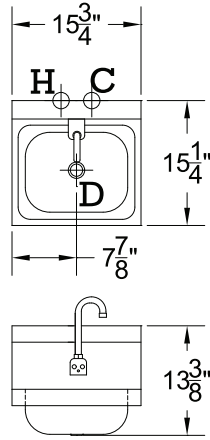
Model: _____ Item #: _____ Date: _____

Project: _____ Qty: _____ Approved By: _____

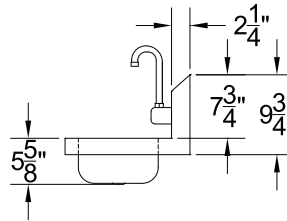
Hand Sinks with Electronic Faucets

Hand Sinks

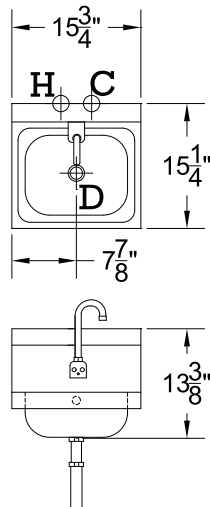
HS-11



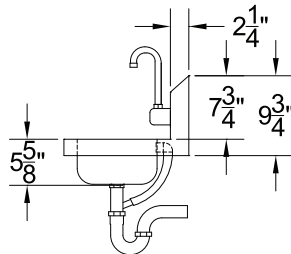
Bowl Size:
12-1/2"W x 9-3/4"L x 5-5/8" Deep



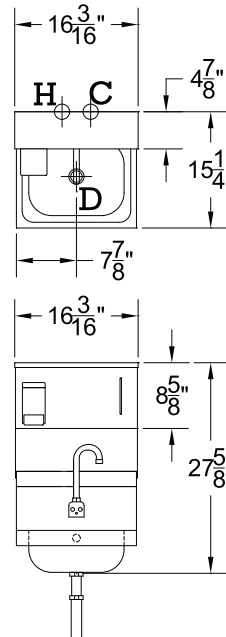
HS-12



Bowl Size:
12-1/2"W x 9-3/4"L x 5-5/8" Deep



HS-13



Bowl Size:
12-1/2"W x 9-3/4"L x 5-5/8" Deep

