



Model: _____ Item #: _____ Date: _____

Project: _____ Qty: _____ Approved By: _____

Storage Cabinets with Dump Sinks

Royal Series Underbar



KR24-SD12C



KR24-S18C



Standard Features

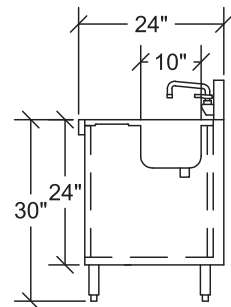
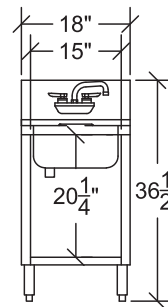
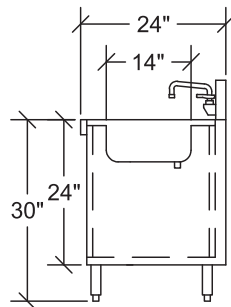
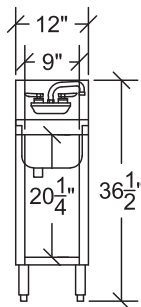
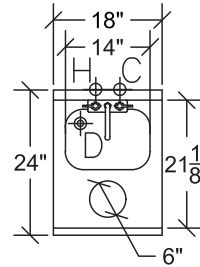
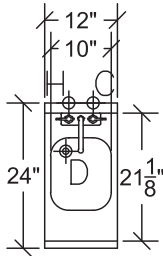
- Cabinet below to store chemicals and cleaning products
- Open access in rear for plumbing
- KR24-S18C and KR24-SD18C includes trash chute
- Includes dump sink with Royal Series faucet

Specifications

Material	▪ 20 Gauge stainless steel
	▪ Legs: 16 Gauge Stainless Steel
Plumbing	▪ Faucet (14-406L): Royal Series 4" Center Wall Mount Faucet with 1.8 GPM aerator (Model ending "-E" includes electronic faucet)
	▪ 1-1/2" Hot & Cold Water
	▪ 1" IPS drain connection
Backsplash	▪ 6-1/2" high, 1-1/2" deep
Legs	▪ 1-5/8" tubular legs with grey plastic bullet foot
Dump Sink	▪ 20 gauge stainless steel w/ 1" center drain
	▪ 7" deep bowl

Model	Length	Depth	Doors	Bowl Size	Wgt.
KR24-S12C	12"	24"	No	10" x 14" x 7"	50
KR24-SD12C	12"	24"	Yes (1)	10" x 14" x 7"	60

Model	Length	Depth	Doors	Bowl Size	Wgt.
KR24-S18C	18"	24"	No	10" x 14" x 7"	65
KR24-SD18C	18"	24"	Yes (1)	10" x 14" x 7"	75
KR24-S18C-E	18"	24"	No	10" x 14" x 7"	65



California Prop 65 Warning: This product can expose you to chemicals including lead and lead compounds, which are known to the State of California to cause cancer and birth defects or other reproductive harm. For more information go to www.P65Warnings.ca.gov.