



Model: \_\_\_\_\_ Item #: \_\_\_\_\_ Date: \_\_\_\_\_

Project: \_\_\_\_\_ Qty: \_\_\_\_\_ Approved By: \_\_\_\_\_

# Drainboard Storage Cabinets

Royal Series Underbar

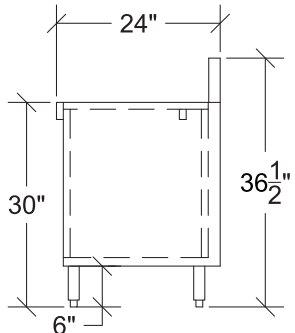
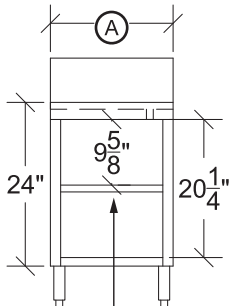
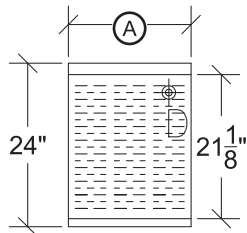


KR24-SD18



KR24-S18  
with Optional Middle Shelf

Model	Length (A)	Depth	Doors	Wgt. (lbs.)
KR24-S12	12"	24"	No	50
KR24-SD12	12"	24"	Yes (1)	60
KR24-S18	18"	24"	No	55
KR24-SD18	18"	24"	Yes (1)	65
KR24-S24	24"	24"	No	60
KR24-SD24	24"	24"	Yes (1)	70
KR24-S30	30"	24"	No	65
KR24-SD30	30"	24"	Yes (2)	80
KR24-S36	36"	24"	No	75
KR24-SD36	36"	24"	Yes (2)	90
KR24-S48	48"	24"	No	85
KR24-SD48	48"	24"	Yes (2)	100



Optional Middle Shelf

## Standard Features

- Storage cabinets with doors come standard with locks
- Optional perforated insert available for drainboard top
- Optional middle shelf available

## Specifications

<b>Drainboard</b>	20 gauge embossed stainless steel reinforced with welded braces every 6"
	3/4" radius on all vertical and horizontal edges
<b>Material</b>	Front Apron: 20 gauge stainless steel
	Backsplash: 20 gauge stainless steel
<b>Material</b>	Sides: 20 gauge stainless steel
	Back & Bottom: 20 gauge stainless steel
	Doors: 20 gauge stainless steel
<b>Legs</b>	1-5/8" tubular 16 gauge stainless steel with gray plastic bullet foot
	Locks included on models with doors
<b>Doors</b>	Doors cannot be added once unit is built
	1" IPS Drain Connection

## Optional Accessories

Model	Description
KR-SS12	Middle Shelf for 12" Cabinet
KR-SS18	Middle Shelf for 18" Cabinet
KR-SS24	Middle Shelf for 24" Cabinet
KR-SS30	Middle Shelf for 30" Cabinet
KR-SS36	Middle Shelf for 36" Cabinet
KR-SS48	Middle Shelf for 48" Cabinet
KR24-PE12	12" Perforated Insert for Drainboard
KR24-PE18	18" Perforated Insert for Drainboard
KR24-PE24	24" Perforated Insert for Drainboard
KR24-PE30	30" Perforated Insert for Drainboard
KR24-PE36	36" Perforated Insert for Drainboard
KR24-PE48	48" Perforated Insert for Drainboard
KR-313	Left & Right End Splash
KR-314	Right End Splash
KR-315	Left End Splash

