



Model: \_\_\_\_\_ Item #: \_\_\_\_\_ Date: \_\_\_\_\_  
 Project: \_\_\_\_\_ Qty: \_\_\_\_\_ Approved By: \_\_\_\_\_

# 14" Speed Units

# ROYAL SERIES

## Standard Features



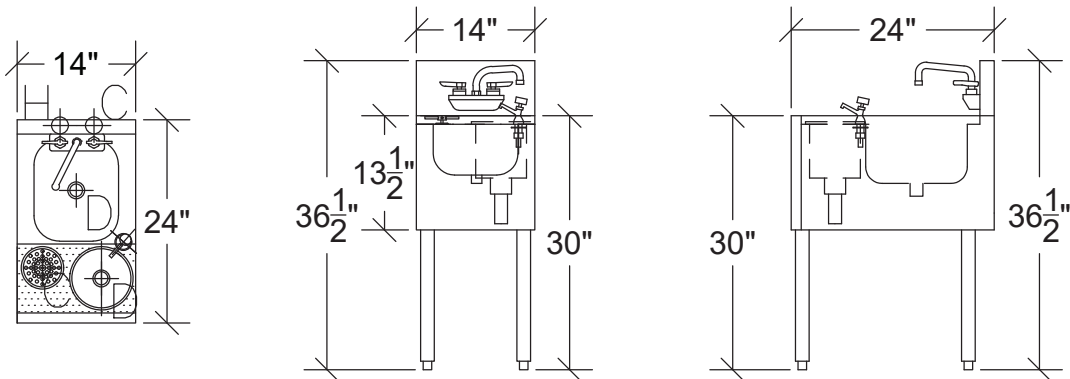
KR24-MS14 shown

- High performance speed rinser
- Tool well with dipperwell faucet
- 10"W x 14"H x 7"D sink bowl
- Perforated stainless cutout
- 4" center wall mount Royal Series faucet w/ 1/4 turn ceramic cartridge valves
- 24" overall depth
- Backsplash 6-1/2" high, 1-1/2" deep
- 1-5/8" tubular legs with grey plastic bullet foot
- 1-1/2" IPS Drain, Sink bowl
- 1-1/2" IPS Drain, Dipperwell
- 1/2" IPS Hot & Cold Water, 4"C Faucet
- 1/2" IPS Cold, Glass Rinsers
- 1/2" IPS Cold, Dipperwell faucet
- Optional cabinet base

<b>Interior</b>	20 gauge stainless steel	<b>Backsplash</b>	20 gauge stainless steel	<b>Legs</b>	16 gauge stainless steel
<b>Front Apron</b>	20 gauge stainless steel	<b>Back</b>	20 gauge galvanized steel (also available in stainless steel)		
<b>Sides</b>	20 gauge stainless steel	<b>Bottom</b>	20 gauge galvanized steel (also available in stainless steel)		

Model Number	Dump Sink	Speed Rinser	Dual Speed Rinsers	Dipperwell	Cutting Board	Overall Length	Overall Depth	Left Side to Drain	Cutting Board Size	Weight (lbs.)
KR24-MS14	✓	✓	-	✓	-	14"	24"	4"	-	63
KR24-MS14-C	✓	✓	-	✓	-	14"	24"	4"	-	78

### KR24-MS14



### KR24-MS14-C

