

K45 / K55 / K70

Food processors

High powered, built to last. The ideal machines for the professional chef. Chop, mince, grind and blend any preparation your recipe requires.



- ▶ **4.7, 5.8, and 7.4 qt (4.5, 5.5, and 7 lt)** capacities
- ▶ A unique **scraper** allows you to prepare everything from meats to creams
- ▶ **Upgradeable** to a combined machine with a special kit (variable speed models)
- ▶ The unique design of bowl and rotor blades guarantees **perfect results** when mixing both large and small quantities

- ▶ Special **pulse function** allows for **coarse chopping** of large pieces
- ▶ Rotor can be placed in a special holder for storage (included)
- ▶ **Maximum cleanliness** thanks to the ergonomic design with rounded edges





Transparent lid



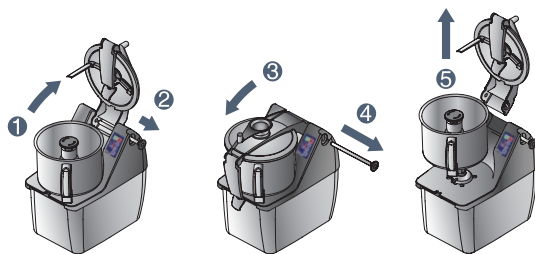
Variable speed control

- ▶ Stainless steel bowl with high chimney to **increase** the real liquid **capacity**, with round corners and ergonomic handle
- ▶ **Dedicated rotors** with **smooth** or **microtoothed** blades as well as specific for **emulsions**
- ▶ **Ergonomic handle** for easy placement of the bowl and self-locking mechanism for **maximum stability**
- ▶ Asynchronous motor for **silent** operation and **longer life**

- ▶ **Transparent lid** permits the operator to check the preparation during operation and to **add ingredients** without opening the lid
- ▶ Hinged cover, when lifted, remains open to permit a fast, easy and practical check of the preparation
- ▶ Waterproof and user friendly **touch button control** panel with pulse function for more precision
- ▶ Maximum speed up to **3700 rpm** (variable speed models)



Bowl with high chimney (to increase the real liquid capacity)



- ▶ The lid and scraper can easily removed and disassembled **without tools**
- ▶ All parts in contact with food are **100% dishwasher safe**



- ▶ **Operator safety guaranteed.** A magnetic control system stops the machine immediately if the cover is opened

K45 - 4.7 qt (4.5 lt) capacity

Speed	Phases	Power	RPM
Variable	1 ph	1000 W	300 to 3700

External dimensions (wxdxh): 10" x 16" x 18.5"
(256x415x470mm)

K55 - 5.8 qt (5.5 lt) capacity

Speed	Phases	Power	RPM
Variable	1 ph	1300 W	300 to 3700

External dimensions (wxdxh): 10" x 16" x 18.5"
(256x415x470mm)

K70 - 7.4 qt (7 lt) capacity

Speed	Phases	Power	RPM
Variable	1 ph	1500 W	300 to 3700

External dimensions (wxdxh): 10" x 16.6" x 20"
(256x422x510mm)